

---

# Mime-Inspired Behaviors in Minimal Social Robots

**Eric Deng**

University of Southern California  
Los Angeles, CA 90007, USA  
denge@usc.edu

**Maja J. Matarić**

University of Southern California  
Los Angeles, CA 90007, USA  
mataric@usc.edu

**Abstract**

Social robotics is a field of study that focuses on building robotic systems designed to effectively interact with people. Because these robots are leveraging their social capabilities to collaborate and communicate with their human counterparts, researchers in the field are developing algorithms and design guidelines for building these systems to help future designers and engineers properly select and use physical features of their social robots for communication. In this paper, we seek to explore how we can learn from the *art of mime* to design embodied gestures in minimal robots for richer nonverbal communication. By using simple robots, we can quickly iterate and modify our behaviors in the early stages of the design process before investing time and energy into implementing the same concept on a much more complicated social robot. The behaviors that arise from simple robots are also more generalizable because of their abstract nature, allowing us to learn from behaviors of minimal robots to design behaviors for more complex embodiments. Mime artists are able to effectively mime action and space using just their bodies and by drawing inspiration from concepts outlined in the theory of the art of mime, we suggest a process for designing embodied gestures in groups of minimal social robots. We propose methods of using the mime concepts of line and space-matter manipulation in combination with emotional expressions to mime objects and show the robots perception of these objects.

## Author Keywords

Human-Robot Interaction, Minimal Robot Behavior, Designing Robot Behavior

## Introduction

As technology continues to mature at an ever-growing rate, we are seeing more and more systems being integrated into our daily lives. Robots have already entered our homes in the form of vacuum cleaners and our factories as collaborators and laborers. Work in robotics is getting more advanced and many of the robots being built are being designed for consumer use in shared spaces with humans. Not only will these systems need to be able to effectively accomplish their designed tasks, such as vacuuming the floor or mowing the lawn, but also behave in socially acceptable ways around and to humans.

Humans intuitively understand nonverbal gestures; robots that can effectively use such nonverbal communication have the opportunity to improve the quality of social human-robot interactions by eliciting more trust [10], improving learning [1], and creating more engaging conversations [3]. There are also an increasing number of situations in which simple robots are communicating with humans without access to more complicated modes of communication such as speech or visual displays. Therefore, these robots need to be able to creatively use what they have to best communicate their intentions.

We are interested in exploring expressive behaviors in minimal social and socially assistive robots. Toward that end, we explore the use of a robot or group of robots' physical embodiment as a natural communication channel. In this work, we describe how concepts of mime can be used to develop robot behavior controllers that enable minimal robots to convey information about non-present physical



Figure 1: Sphero SPRK+ Robot



Figure 2: Mime artist miming a non-present wall

objects.

## The Building Blocks of Mime

Mime is an art form that uses the human body to act out stories without the use of speech or sound [14]. Mime artists tell rich stories by using a variety of nonverbal cues. A classical mime act demonstrates being stuck in a box; the artist gestures all around his body as if touching a glass box that surrounds him. The performance involves acting relative to imaginary physical constraints, such as the glass box, and being physically as well as emotionally expressive, such as showing anxiety from being stuck.

Mimes are known for being able to make things "out of thin air". Space-matter manipulation is the main underlying principle used for generating matter and demonstrating how the matter behaves [9]. Using this technique, mimes are able to define more detailed features of objects being shown such as mass, volume, and shape [9]. This principle is used to show the behavior of objects in the physical space, for instance juggling invisible oranges or bouncing a basketball, by applying force to objects and then responding in physically-appropriate ways. Space-matter manipulation is also heavily reliant on the complex degrees of freedom in actors' bodies. To define the shape and volume of objects, mimes need to shape their appendages to fit the physical properties of objects being mimed. This includes things like changing the curvature of the palm, bending of the legs to suggest weight, and leaning of the body to show the effects of balancing.

## Iconic Gestures and Affect Displays

Gestures are a subset of body language that is often tied to linguistic content. It breaks down into emblems, iconic gestures, metaphoric gestures, regulators, affect displays, and beat gestures [4]. Iconic gestures are most directly tied



Figure 3: Crazyflie Quadrotor

to the semantics of speech, adding detail to mental images through the use of body language. Affect displays convey emotion and help to clarify the relationship between an agent and another agent or object. By using iconic gestures and affect displays, we can allow simple robotic systems to construct mental images of objects being gestured and then communicate its perception of those objects to their human counterparts.

### Behavior Control for Robot Mime

We are interested in exploring how a swarms of simple robots can be controlled for various social interactions including play and basic conversation. One example of such simple robots that we use in our lab are Spheros, seen in Figure 1. They are low degree-of-freedom (DoF) robots that can be controlled by combining external sensing from a centrally-mounted, top-down RGB camera with a centralized controller for the swarm as a whole [13, 2]. Another example of simple robots is the Crazyflie drone, a small quadrotor that is often used for swarm-related research [12]. Using basic theory from the art of mime we now have an approach to gesturing physical spaces and objects using these kinds of minimal robots.

Spheros and Crazyflies, like other non-verbal social robots, use their bodies to convey intent. We break down the motion of these robots into position, velocity, acceleration, and jerk, the derivative of acceleration. To apply mime space-matter manipulation techniques to a swarm of these simple robots, we use position, acceleration, and jerk to mime different features of an object; position of nodes in the swarm defines the volume in which objects exist and the combination of acceleration and jerk is used to indicate physical properties of objects upon impact, specifically hardness and elasticity [15].

### Miming Shape and Volume

Simple robots and swarms can use iconic gestures [7] to describe non-present physical objects to human interaction partners [4]. To develop systems that accurately manipulate the *positions* of nodes in a swarm of robots, we can centralized control methods for pattern formation in multi-robot systems. For example, a target assignment strategy for formation building [11] allows for obstacle avoidance that can be used in defining the outline of described objects by assigning individual trajectories for each robot in the swarm [2].

### Miming Physical Properties

To demonstrate mechanical properties of the mimed objects, such as distinguishing between boxes of varying compressability, we adjust the *acceleration* and *jerk* of each robot's motion upon impact with the mimed object. Acceleration is effective at conveying how the bounds of an object react to applied forces. For example, in compressing an object, the acceleration of the robot is demonstrative of how the shape deforms to a compressing force. Jerk is effective in showing the elasticity of objects, or how objects react to initial impact [15]. Acceleration and jerk of each robot in the swarm can be adjusted dynamically [16].

### Augmenting Mime-Inspired Behaviors

To create even richer embodied interactions, we can further augment our mime-inspired behaviors by using channels of communication that robots may have that mimes do not. Two examples of such channels are *sound* and *color*. Work in visual and graphic design has associated different colors with different emotions and different branding themes, which can be used to advise robot coloration in different interaction contexts. In sound design and human-robot interaction work other researchers have explored how humans perceive different sounds that vary in tone, intensity,

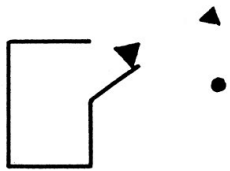


Figure 4: CrazySwarm: 49 vehicle formation flight [12]

and changes in pitch [17]. Boccanfuso et al. combines the two channels to communicate internal emotional state of Sphero robots in interactions with children [5].

### Evaluating Mimed Behaviors

As with the classic Heider-Simmel Illusion, wherein users inferred and interpreted complex social dynamics from a short video displaying the motion of basic shapes around a central box shape [8], observers are likely to interpret potentially complex behaviors, intents, and emotions from a properly designed movement of a swarm of simple robots. The simplicity of programming these robot platforms allows for rapid data collections from users that would lead to more analytical modeling [6]. Our goal is to first select a set of basic gestures for testing the premise of mime-inspired swarm control with Spheros, and then use the results toward the design of data-driven models for mime-inspired behaviors more generally.



**Figure 5:** Screenshot from the Heider-Simmel Illusion

### References

- [1] Sean Andrist, Tomislav Pejisa, Bilge Mutlu, and Michael Gleicher. 2012. Designing effective gaze mechanisms for virtual agents. In *Proceedings of the SIGCHI conference on Human factors in computing systems*. ACM, 705–714.
- [2] Erkin Bahceci, Onur Soysal, and Erol Sahin. 2003. A review: Pattern formation and adaptation in multi-robot systems. *Robotics Institute, Carnegie Mellon University, Pittsburgh, PA, Tech. Rep. CMU-RI-TR-03-43* (2003).
- [3] Wilma A Bainbridge, Justin W Hart, Elizabeth S Kim, and Brian Scassellati. 2011. The benefits of interactions with physically present robots over video-displayed agents. *International Journal of Social Robotics* 3, 1 (2011), 41–52.
- [4] Geoffrey Beattie. 2004. *Visible thought: The new psychology of body language*. Psychology Press.
- [5] Laura Boccanfuso, Elizabeth S Kim, James C Snider, Quan Wang, Carla A Wall, Lauren DiNicola, Gabriella Greco, Lilli Flink, Sharlene Lansiquot, Pamela Ventola, and others. 2015. Autonomously detecting interaction with an affective robot to explore connection to developmental ability. In *Affective Computing and Intelligent Interaction (ACII), 2015 International Conference on*. IEEE, 1–7.
- [6] Ronald Aylmer Fisher and others. 1949. The design of experiments. *The design of experiments*. Ed. 5 (1949).
- [7] Uri Hadar and Brian Butterworth. 1997. Iconic gestures, imagery, and word retrieval in speech. *Semiotica* 115, 1-2 (1997), 147–172.
- [8] Fritz Heider and Marianne Simmel. 1944. An experimental study of apparent behavior. *The American Journal of Psychology* 57, 2 (1944), 243–259.
- [9] Hollis Huston. 1978. Dimensions of Mime Space. *Educational Theatre Journal* 30, 1 (1978), 63–72.
- [10] Cory D Kidd and Cynthia Breazeal. 2004. Effect of a robot on user perceptions. In *Intelligent Robots and Systems, 2004.(IROS 2004). Proceedings. 2004 IEEE/RSJ International Conference on*, Vol. 4. IEEE, 3559–3564.
- [11] Wojciech Kowalczyk. 2002. Target assignment strategy for scattered robots building formation. In *Robot Motion and Control, 2002. RoMoCo'02. Proceedings of the Third International Workshop on*. IEEE, 181–185.
- [12] James A Preiss, Wolfgang Hönig, Gaurav S Sukhatme, and Nora Ayanian. CrazySwarm: A Large Nano-Quadcopter Swarm. (????).

- [13] Morgan Quigley, Ken Conley, Brian Gerkey, Josh Faust, Tully Foote, Jeremy Leibs, Rob Wheeler, and Andrew Y Ng. 2009. ROS: an open-source Robot Operating System. In *ICRA workshop on open source software*, Vol. 3. Kobe, 5.
- [14] Anya Peterson Royce. 1984. *Movement and meaning: Creativity and interpretation in ballet and mime*. Indiana Univ Pr.
- [15] Steven H Schot. 1978. Jerk: the time rate of change of acceleration. *American Journal of Physics* 46, 11 (1978), 1090–1094.
- [16] Sigurd Skogestad. 2003. Simple analytic rules for model reduction and PID controller tuning. *Journal of process control* 13, 4 (2003), 291–309.
- [17] David Sonnenschein. 2001. *Sound design*. Michael Wiese Productions.