

# A Probabilistic Framework for Autonomous Proxemic Control in Situated and Mobile Human-Robot Interaction

Ross Mead  
University of Southern California  
3710 McClintock Ave., RTH 423  
Los Angeles, CA 90089-0781  
(213)-740-6245

rossmead@usc.edu

Maja J Mataric  
University of Southern California  
3650 McClintock Ave., OHE 200  
Los Angeles, CA 90089-1450  
(213)-740-4520

mataric@usc.edu

## ABSTRACT

In this paper, we draw upon insights gained in our previous work on human-human proxemic behavior analysis to develop a novel method for human-robot proxemic behavior production. A probabilistic framework for spatial interaction has been developed that considers the sensory experience of each agent (human or robot) in a co-present social encounter. In this preliminary work, a robot attempts to maintain a set of human body features in its camera field-of-view. This methodology addresses the functional aspects of proxemic behavior in human-robot interaction, and provides an elegant connection between previous approaches.

## Categories and Subject Descriptors

I.2.9 [Artificial Intelligence]: Robotics – operator interfaces.

H.1.2 [Models and Principles]: User/Machine Systems.

## General Terms

Algorithms, Design, Experimentation, Human Factors, Theory.

## Keywords

Human-robot interaction, proxemics, probabilistic models.

## 1. INTRODUCTION AND BACKGROUND

*Proxemics* is the study of the interpretation, manipulation, and dynamics of spatial behavior in co-present social encounters. Edward T. Hall coined this term, and proposed that psychophysical factors shaped by culture defined zones of intimate, personal, social, and public space [1]; these proxemic zones are characterized by the visual, auditory (voice loudness), olfactory, thermal, touch, and kinesthetic experiences of each interacting participant [2]. To facilitate situated and mobile human-robot interaction (HRI), we seek to develop functional and socially appropriate probabilistic models of proxemic behavior that can be implemented as controllers for sociable robots.

A number of rule-based spatial interaction controllers have been investigated in HRI [3, 4]. Interpersonal dynamic models, such as equilibrium theory [5], have also been evaluated with robots [6, 7]. Contemporary probabilistic modeling techniques have been applied to person-aware robot navigation in dynamic crowded environments [8], to goal-oriented navigation behavior with a human partner [9], and to calculating a robot approach trajectory to initiate interaction with a walking person [10].

Copyright is held by the author/owner(s).  
*HRI'12*, March 5–8, 2012, Boston, Massachusetts, USA.  
ACM 978-1-4503-1063-9/12/03.

In previous work, we took advantage of recent advancements in markerless motion capture (specifically, the Microsoft Kinect) to automatically extract low-level proxemics-relevant features based on metrics from the social sciences [11]. We used these features to recognize high-level spatiotemporal interaction behaviors, such as the initiation, acceptance, and termination of an interaction [12]. These investigations provided insights into the development of situated spatial interaction controllers for autonomous sociable robots; specifically, they (and related literature [2]) suggest an alternative approach to proxemic behavior that goes beyond simple distance and orientation by considering the sensory experience of each agent (human or robot) in a social encounter.

## 2. APPROACH

We propose a sort of mid-level probabilistic framework—between low-level spatial features [3, 4] and high-level interagent relationship features [6, 7]—that defines proxemic behavior based on how an agent will likely experience social stimuli (e.g., speech and gesture) in a co-present interaction. Previous approaches that addressed low-level spatial features are still relevant [3, 4], providing variables that are observable; specifically, we utilize interagent distance ( $d$ ), the angle from the robot to the person ( $\alpha$ ), and the angle from the person to the robot ( $\beta$ ) to generate priors— $p(d, \alpha, \beta)$ .

Our probabilistic framework for proxemic behavior considers a set of desired (often latent) sensory features— $F = \{f_1, f_2, \dots, f_n\}$ ; where  $f_i$  is the  $i^{\text{th}}$  of  $n$  sensory features—to be experienced by an agent. These sensory features are conditioned over aforementioned spatial factors— $p(F | d, \alpha, \beta)$ . We can then sample over possible agent poses (positions and orientations) in an environment, using simple Bayesian Inference to evaluate the posterior probability of the interagent distance and orientations conditioned on  $F$  (Equation 1). The pose with the maximum likelihood is selected as the location to conduct the interaction.

$$p(d, \alpha, \beta | F) = \eta \times p(F | d, \alpha, \beta) \times p(d, \alpha, \beta) ; \eta = p(F)^{-1} \quad (1)$$

Based on this probabilistic framework, high-level interagent relationship features of proxemic behavior (e.g., amount of eye gaze [6, 7] or intimacy of topic [6]) can then define the desired sensory experience over social stimuli for each interacting agent.

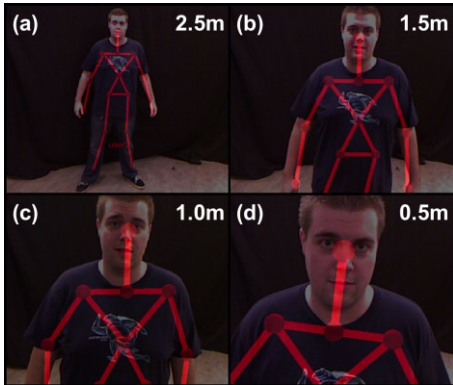
## 3. IMPLEMENTATION

A proof-of-concept real-time proxemic controller has been developed that implements the proposed probabilistic framework. For this work, we utilized the PR2 robot from Willow Garage. The PR2 features a semi-holonomic mobile base, which affords it the ability to strafe, a valuable motion for proxemic control.

We first developed a simple rule-based dyadic (two-agent) proxemic controller that accepts the following input signals: desired and actual interagent distances ( $D$  and  $d$ , respectively); desired and actual angle from the robot to the person ( $A$  and  $\alpha$ , respectively), and the desired and actual angle from the person to the robot ( $B$  and  $\beta$ , respectively, respectively). The controller attempts to minimize the error between each of the desired and actual distance and angle signals; the resulting linear velocities ( $v_x, v_y$ ) and angular velocity ( $v_\omega$ ) are expressed as follows:

$$\begin{pmatrix} v_x \\ v_y \\ v_\omega \end{pmatrix} = \begin{pmatrix} \cos(\alpha) & -\sin(\alpha) & 0 \\ \sin(\alpha) & \cos(\alpha) & 0 \\ 0 & 0 & 1 \end{pmatrix} \begin{pmatrix} (d-D) \times \cos(\alpha-A) \\ \sin(\beta-B) \\ A-\alpha \end{pmatrix} \quad (2)$$

We then developed a higher-level spatial interaction controller based on our probabilistic framework of proxemic behavior. In this preliminary work, our feature set  $F$  contains the names of human joints (e.g., “head”, “left shoulder”, “right hand”, “torso”, etc.) to be detected by the Microsoft Kinect (Figure 1) [11]. This feature set was selected for its applicability in recognizing gesture parameters, such as *gesture locus* (the regions of the body involved by a gesture) [13]. A naïve model of  $p(F | d, \alpha, \beta)$  has been established for a small group of users for a proof-of-concept; we are developing a larger study to better model these data.



**Figure 1. Body features that appear in the Kinect field-of-view at four distances: (a) 2.5m, (b) 1.5m, (c) 1.0m, and (d) 0.5m.**

To sample robot poses, we discretize the world using a grid-based approach, where each grid cell serves as a pose (though, in future work, we will utilize a more efficient particle-based method). The pose that maximizes Equation 1 is used to determine the desired interagent distance and orientation parameters ( $D, A, B$ ), which are sent to the rule-based proxemic controller (above) to generate the appropriate linear and angular velocities (Equation 2).

#### 4. DISCUSSION AND FUTURE WORK

We have proposed and implemented a probabilistic framework for proxemic behavior production in HRI. This approach captures the functional aspects of spatial interaction by considering the sensory experience (in this case, human body features) of interacting agents, and sits as a mid-level representation between low-level spatial features [3, 4] and high-level interagent relationship features [6, 7]. A full data collection is underway to better model the desired features based on spatial parameters. In future work, we will consider using a coupled Dynamic Bayesian Network to improve goal pose estimation and to factor in the perspective of the human into robot control. All code will be part of the Social Behavior Library (SBL) in the USC ROS Packages Repository (<http://sourceforge.net/projects/usc-ros-pkg/>).

#### 5. ACKNOWLEDGMENTS

This work is supported in part by an NSF Graduate Research Fellowship, as well as ONR MURI N00014-09-1-1031 and NSF CNS-0709296 grants, and the Willow Garage PR2 Beta Program.

#### 6. REFERENCES

- [1] Hall, E. T. 1966. *The Hidden Dimension*. Doubleday, Garden City, NY.
- [2] Hall, E.T. 1963. A system for notation of proxemic behavior. *American Anthropologist*, 65, 1003-1026.
- [3] Shi, C., Shimada, M., Kanda, T., Ishiguro, H., and Hagita, N. 2011. Spatial formation model for initiating conversation. *Proc. of Robotics: Science and Systems (RSS 2011)*. Los Angeles, CA.
- [4] Kuzuoka, H., Suzuki, Y., Yamashita, J., and Yamazaki, K. 2010. Reconfiguring spatial formation arrangement by robot body orientation. *Proc. of the 5th ACM/IEEE Int'l. Conf. on Human-Robot Interaction (HRI 2010)*, Osaka, Japan, 285-292.
- [5] Argyle, M. and Dean, J. 1965. Eye-contact, distance and affiliation. *Sociometry*, 28, 3, American Sociological Association, 289-304.
- [6] Mumm, J. and Mutlu, B. 2011. Human-robot proxemics: physical and psychological distancing in human-robot interaction. *Proc. of the 6th Int'l. Conf. on Human-Robot Interaction (HRI 2011)*, Lausanne, Switzerland, 331-338.
- [7] Takayama, L. and Pantofaru, C. 2009. Influences on proxemic behaviors in human-robot interaction. *IEEE/RSJ Int'l. Conf. on Intelligent Robots and Systems (IROS 2009)*, St. Louis, MO, 5495-5502.
- [8] Trautman, P. and Krause, A. 2010. Unfreezing the robot: navigation in dense, interacting crowds. *Proc. of the IEEE/RSJ Int'l. Conf. on Intelligent Robots and Systems (IROS 2010)*, Taipei, Taiwan, 797-803.
- [9] Feil-Seifer, D. and Matarić, M. 2011. People-aware navigation for goal-oriented behavior involving a human partner. *Proc. of the IEEE Int'l. Conf. on Development and Learning (ICDL 2011)*, 2, Frankfurt Am Main, 1-6.
- [10] Satake, S., Kanda, T., Glas, D. F., Imai, M., Ishiguro, H., and Hagita, N. 2009. How to approach humans?: strategies for social robots to initiate interaction. *Proc. of the 4th ACM/IEEE Int'l. Conf. on Human Robot Interaction (HRI 2009)*, San Diego, CA, 109-116.
- [11] Mead, R., Atrash, A., and Matarić, M. J. 2011. Proxemic feature recognition for interactive robots: automating metrics from the social sciences. *Proc. of the 2011 Int'l. Conf. on Social Robotics (ICSR 2011)*, Amsterdam, Netherlands, 52-61.
- [12] Mead, R., Atrash, A., and Matarić, M.J. 2011. Recognition of spatial dynamics for predicting social interaction. *Proc. of the 6th ACM/IEEE Int'l. Conf. on Human-Robot Interaction (HRI 2011)*, Lausanne, Switzerland, 201-202.
- [13] Rossini, N. 2004. The analysis of gesture: establishing a set of parameters. *Gesture-based Communication in Human-Computer Interaction, Lecture Notes in Computer Science*, 2915, Springer Berlin/Heidelberg, 463-464.