

Automated Analysis of Proxemic Behavior: Leveraging Metrics from the Social Sciences

Ross Mead, Amin Atrash, and Maja J Matarić
Interaction Lab
Computer Science Department
Viterbi School of Engineering
University of Southern California
Los Angeles, CA 90089
{rossmead, atrash, mataric}@usc.edu

Abstract—We discuss a set of metrics for analyzing human spatial behavior motivated by work in the social sciences; specifically, we investigate individual, attentional, interpersonal, physiological, and organizational factors that contribute to social spacing (proxemics). We then present a pilot study to demonstrate the feasibility of real-time annotation of these spatial behaviors in multi-person social encounters. In particular, we are interested in working with sensor suites that (1) are non-invasive to participants, (2) are readily deployable in a variety of environments—ranging from an instrumented workspace to a mobile robot platform—and (3) do not interfere with the social interaction itself. Finally, we provide an analysis of the performance of the annotation system, and discuss applications and future directions of this work.

Keywords—Proxemics; spatial interaction; spatial dynamics; spatial orientation; human-robot interaction; PrimeSensor; Kinect.

I. INTRODUCTION AND BACKGROUND

Proxemics is the study of the dynamic process by which people position themselves in face-to-face social encounters [1]. This process is governed by sociocultural norms, that, in effect, determine the overall sensory experience of each interacting participant [2]. People use proxemic signals, such as distance, stance, hip and shoulder orientation, head pose, and eye gaze, to communicate an interest in initiating, accepting, maintaining, terminating, and avoiding social interaction [3, 4, 5]. People can also manipulate space in an interaction, perhaps to direct attention to an external stimulus (usually accompanied by a hand gesture) or to guide a social partner to another location [6]. These cues are often subtle and noisy, and, subsequently, are subject to coarse analysis.

There exists a considerable body of work in the social sciences that seeks to explain certain proxemic phenomena. The anthropologist Edward T. Hall [1] coined the term “proxemics”, and proposed that *physiological* influences shaped by culture define zones of proxemic distances [2, 7]. Mehrabian [5], Argyle and Dean [8], and Burgoon *et al.* [9] analyzed spatial behaviors as a function of the *interpersonal*

relationship between social partners. Schöne [10] was inspired by the spatial behaviors of biological organisms in response to stimuli, and investigated human spatial dynamics from physiological and *ethological* perspectives; similarly, Hayduk and Mainprize [11] analyzed the personal space requirements of people who are blind. Kennedy *et al.* [12] studied the amygdala and how *emotional* (specifically, fight-or-flight) responses regulate space. Proxemic behavior is also impacted by factors of the *individual*—such as sex [13], age [14], ethnicity [15], and personality [16]—as well as *environmental* features—such as lighting [17], setting [18], location in setting and crowding [19], size [20], and permanence [7].

Following the emergence of embodied conversational agents [21], the study of proxemics has been approached from a *computational* perspective. Rule-based social formation controllers have been applied to human-robot interaction (HRI) [22, 23, 24]. Interpersonal dynamic theories, such as equilibrium theory [8], have been evaluated in HRI [25, 26] and immersive virtual social environments [27]. Contemporary machine learning techniques have been applied to socially-appropriate person-aware navigation in dynamic crowded environments [28] and recognition of positive and negative attitudes of children with autism to an interactive robot [29].

A lack of high-resolution metrics limited previous efforts to coarse analyses in both space and time [30, 31]. Recent developments in markerless motion capture, such as the Microsoft Kinect¹ and PrimeSensor², have addressed the problem of real-time human pose estimation, providing the means and justification to revisit and more accurately model the subtle dynamics of human spatial interaction. In this work, we present a system that takes advantage of these advancements and draws on inspiration from existing metrics in the social sciences to automate the analysis process of proxemic behavior. This automation is necessary for the development of socially-situated artificial agents, both virtual and physically embodied.

¹ <http://www.xbox.com/en-US/kinect>

² <http://www.primesense.com/>

II. METRICS FOR PROXEMIC BEHAVIOR ANALYSIS

In this paper, we consider individual [32], attentional [6, 33], interpersonal [5], physiological [34], and organizational [4] metrics that are commonly used to analyze social spacing.

A. Individual Metrics

Schegloff [32] emphasized the importance of distinguishing between poses of the lower and upper parts of the body, suggesting that the lower parts (from the waist down) signal “dominant involvement” and the upper parts (from the waist up) signal “subordinate involvement”.

1) *Stance pose*: Dominant involvement; position midway between the left and right ankle joint positions, and orientation orthogonal to the line segment connecting the left and right ankle joint positions.

2) *Hip pose*: Dominant involvement; position midway between the left and right hip joint positions, and orientation orthogonal to the line segment connecting the left and right hip joint positions.

3) *Shoulder pose*: Subordinate involvement; position midway between the left and right shoulder joint positions, and orientation orthogonal to the line segment connecting the left and right shoulder joint positions.

4) *Torso pose*: Subordinate involvement; position of torso joint, and average of hip pose orientation and shoulder pose orientation (weighted based on relative torso position between to hip pose and shoulder pose).

5) *Left arm pose*: Subordinate involvement; position of left elbow joint, and orientation from left elbow joint to left hand joint.

6) *Right arm pose*: Subordinate involvement; position of right elbow joint, and orientation from right elbow joint to right hand joint.

B. Attentional Metrics

McNeill [6, 33] posited that *attentional* (or *instrumental*) gestures could be used to manipulate space by incorporating an object of mutual interest.

1) *Left arm deictic referent*: Target (social agent or stimulus) of a ray projected from the left elbow joint through the left hand joint.

2) *Right arm deictic referent*: Target (social agent or stimulus) of a ray projected from the right elbow joint through the right hand joint.

C. Interpersonal Metrics

Mehrabian [5] provides distance- and orientation-based interpersonal metrics for proxemic behavior analysis.

1) *Total distance*: Magnitude of a Euclidean *interpersonal distance vector* between the closest joint/pose-pair of a social dyad.

2) *Straight-ahead distance*: x -component of the *interpersonal distance vector*.

3) *Lateral distance*: y -component of the *interpersonal distance vector*.

4) *Relative body orientation*: Absolute value of the yaw between a social dyad.

D. Physiological Metrics

Hall’s physiologically-inspired proxemic dimensions are proposed as an alternative to strict spatial analysis, providing a sort of functional sensory explanation to the human use of space [34]. Hall seeks not only to answer questions of *where* and *when* a person will be, but, also, the question of *why*.

1) *Sex code*: Male or female.

2) *Posture code*: Based on the angle formed between the stance and hip poses, and the hip and shoulder poses; prone, sitting (or squatting), or standing.

3) *Sociofugal-sociopetal (SFP) axis code*: An 8-point compass model (in 22.5° intervals) of *relative orientation*, with face-to-face (axis-0) representing maximum sociopetality and back-to-face (axis-8) representing maximum sociofugality [35, 36, 37]; axis-0 (0° - 11.25°), axis-1 (11.25° - 33.75°), axis-2 (33.75° - 56.25°), axis-3 (56.25° - 78.75°), axis-4 (78.75° - 101.25°), axis-5 (101.25° - 123.75°), axis-6 (123.75° - 146.25°), axis-7 (146.25° - 168.75°), or axis-8 (168.75° - 180°).

4) *Kinesthetic code*: Based on the distances between the stance, hip, shoulder, torso, and arm poses; within body contact distance, just outside body contact distance, within easy touching distance with only forearm extended, just outside forearm distance (“elbow room”), within touching or grasping distance with the arms fully extended, just outside this distance, within reaching distance, or just outside reaching distance.

5) *Touch code*: Caressing and holding, feeling or caressing, extended or prolonged holding, holding, spot touching (hand peck), accidental touching (brushing), or no contact whatsoever.

6) *Visual code*: Foveal (sharp; 1° off-center), macular (clear; 6.5° off-center), scanning (30° off-center), peripheral (90° off-center), or no visual contact.

7) *Thermal code*: Based on distance conducted heat detected ($0''$ - $6''$), radiant heat detected ($6''$ - $12''$), heat probably detected ($12''$ - $21''$), or heat not detected.

8) *Olfaction code*: Differentiated body odor detectable ($0''$ - $6''$), undifferentiated body odor detectable ($6''$ - $12''$), breath detectable ($12''$ - $18''$), olfaction probably present ($18''$ - $36''$), or olfaction not present.

9) *Voice loudness code*: Silent ($0''$ - $6''$), very soft ($6''$ - $12''$), soft ($12''$ - $30''$), normal ($30''$ - $78''$), normal plus ($78''$ - $144''$), loud ($144''$ - $228''$), or very loud (more than $228''$).

10) *Distance code*: Close-phase intimate distance ($0''$ - $6''$), far-phase intimate distance ($6''$ - $18''$), close-phase personal distance ($18''$ - $30''$), far-phase personal distance ($30''$ - $48''$), close-phase social distance ($48''$ - $84''$), far-phase social distance ($84''$ - $144''$), close-phase public distance ($144''$ - $300''$), or far-phase public distance (more than $300''$).

E. Organizational Metrics

Kendon [4] referred to spatial organizational patterns as *F-formations*: “when two or more people sustain a spatial and

orientation relationship in which the space between them is one to which they have equal, direct, and exclusive access.”

- 1) *O-space*: Intersection of the rays projected along the torso pose of each participant in an F-formation.
- 2) *Vis-à-vis*: An F-formation in which the absolute value of the angle formed between participants is approximately 180°, and both participants share an O-space.
- 3) *L-shape*: An F-formation in which the absolute value of the angle formed between participants is approximately 90°, and both participants share an O-space.
- 4) *Side-by-side*: An F-formation in which the absolute value of the angle formed between participants is approximately 0°, and both participants share an O-space.

III. DATA COLLECTION

We conducted a pilot study to observe human spatial dynamics in natural interactions. The primary objective of this study was to demonstrate the feasibility of real-time annotation of proxemic behaviors in multi-person social encounters. In particular, we were interested in working with sensor suites that (1) are non-invasive to participants, (2) are readily deployable in a variety of environments—ranging from an instrumented workspace to a mobile robot platform—and (3) do not interfere with the interaction itself.

A. Experimental Setup

The study was set up and conducted in a 20' x 20' room in the USC Interaction Lab (Fig. 1). A “presenter” and a participant engaged in an interaction loosely focused on a common object of interest—a static, non-interactive humanoid robot. (In this work, the second author played the role of the presenter, though was unaware of the conditions of the experiment.) The interactees were monitored by the PrimeSensor markerless motion capture system, an overhead color camera, and an omnidirectional microphone.

Prior to the participant entering the room, the presenter stood on floor marks X and Y for calibration. The participant later entered the room from floor mark A, and awaited calibration at floor marks B and C; note that, from all specified participant locations, the presenter was out of the field-of-view of the participant (i.e., the participant was not aware that the presenter was in the room).

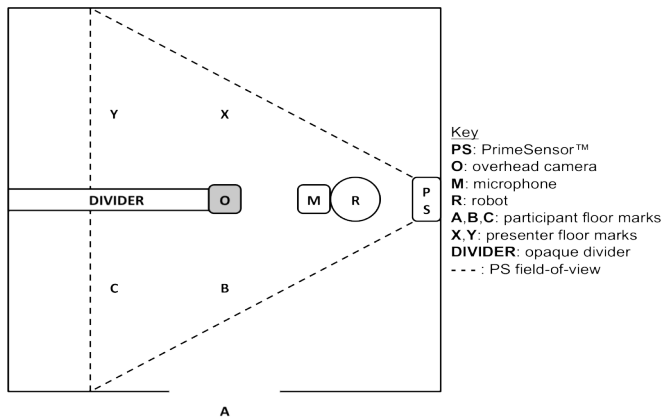


Figure 1. The interaction study setup.

B. Interaction Scenario

As soon as the participant moved away from floor mark C and approached the robot, the scenario was considered to have officially begun. Once the participant verbally engaged the robot (unaware that the robot would not respond), the presenter was signaled (via laser pointer out of the field-of-view of the participant) to approach the participant from behind the divider, and attempt to enter the existing interaction between the participant and the robot. Once engaged in this interaction, the dialogue between the presenter and the participant was opened and lasted ~5-6 minutes. Once the interaction was over, the participant exited the experimental area; the presenter had been previously instructed to return to floor mark Y at the end of the interaction. Once the presenter reached this destination, the scenario was considered to be complete.

C. Participants

The study was conducted with the approval of the USC Institutional Review Board (#UP-09-00204). All participants were presented with the Experimental Subject’s Bill of Rights, and were informed of the general nature of the study and the types of data that were being captured (in this case, video and audio); consent to these conditions meant that the participant agreed to be recorded, and that such recordings could be used, unmodified, for presentation purposes. A Myers-Briggs/Jung Typology test and a post-study survey were also administered; their analyses are left as future work.

A total of 18 participants were involved in the study. Joint positions recorded by the PrimeSensor were processed to produce individual [32], attentional [6, 33], interpersonal [5], physiological [34], and organizational [4] metrics, each with corresponding confidence values (Fig. 2); to our knowledge, this is the first time Hall’s physiologically-inspired proxemic dimensions [34] have been automatically extracted. We calculated these proxemic metrics and their respective changes for the participant, the presenter, and the robot in real-time.

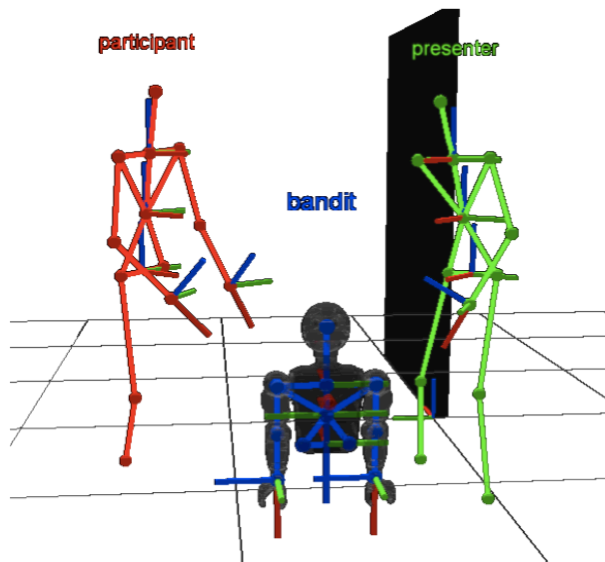


Figure 2. Pose information for the presenter, the participant, and the robot (denoted “bandit”). The absence of some features, such as arms or legs, signified a position estimate with low confidence.

IV. QUALITATIVE ANALYSIS AND DISCUSSION

For Schegloff's individual metrics [32], pose information was successfully extracted from the PrimeSensor data. Each joint position provided a confidence value, which was used to better estimate the quality of the recognition of each individual pose. In addition, these poses simplified distance and orientation estimates for Mehrabian's interpersonal metrics [5].

In this preliminary study, McNeill's attentional metrics [6] were determined by detecting a collision between a ray (projected from the elbow through the hand, based on arm poses) and any represented entity (object or agent) in the environment. This naïve approach proved to be very limited and highlighted the need for a better understanding of socially-situated recognition techniques. McNeill [33] posited that hand and arm gestures could serve one of two roles: *social* (consisting only of the people, as originally defined) or *instrumental* (or *attentional*; incorporating an object of mutual interest). We will investigate techniques to discriminate between these social actions in future work.

Although Kendon's organizational metrics [4] were estimated, there were insufficient data to appropriately categorize them. In the future, learned models for spatial organization will allow for more robust recognition of these social patterns.

Hall's physiological metrics [34] provided the most compelling information concerning the interaction scenario, serving as a better representation of the interaction than the simple spatial metrics typically utilized. By utilizing the distances between joint estimates, kinesthetic factors were accurately modeled for each individual. Basic 3D collision detection techniques were used to identify contact between the participants (e.g., during a handshake). With the utilized sensor technologies, it would be feasible to consider continuous measure of posture and orientation, as opposed to the currently discretized implementations. In this preliminary study, eye gaze and head orientation could not be determined; instead, visual fields-of-view and olfactory receptor fields were estimated from shoulder poses. We are in the process of integrating the Watson 3D head orientation tracker [38] into the annotation system, in an effort to improve visual and olfactory estimates. Thermal, olfactory, and voice loudness factors were estimated using distance-based heuristics; an extended implementation of the experimental setup could include temperature sensors, wind speed/direction sensors, and additional microphones to account for these factors. Finally, visual, thermal, olfactory, and auditory noise was not accounted for this study, but our anecdotal observations suggest that such environmental interference could extend the defined metrics and provide significant insight into the study of proxemic behavior.

V. CONCLUSIONS AND FUTURE WORK

In this work, we presented a set of metrics motivated by work in the social sciences for analyzing human spatial behavior. We then described a pilot study to demonstrate the feasibility of the real-time annotation of these proxemic metrics in multi-person social encounters. We utilized a markerless motion capture system (the PrimeSensor), an overhead camera,

and an omnidirectional microphone to recognize these metrics in real-time; this sensor suite is non-invasive to participants, is readily deployable in a variety of environments, and does not interfere with the interaction itself. We also provided a qualitative analysis and discussion of the performance of the annotation system. We now present future directions and applications of this work, particularly with applications to autonomous systems.

A. Validation

The work described in this paper focused on presenting the metrics and a study centered on data collection. We are currently in the process of validating our automated system by comparing the performance against multiple human annotators. Our data set includes approximately 2 hours of data with 10 features per individual and 16 features per dyad. Although it is difficult to estimate the actual time for labeling by annotators, experiences within the Interaction Lab suggest approximately one hour per one minute of data for each feature; however, this also highlights the utility an automated annotation system.

B. Heuristic-based vs. Learned Approaches

Currently, the models used by our automated system utilize heuristics based on metrics provided by the literature [4, 5, 6, 32, 33, 34]. These parameters are often determined from empirical evidence as observed by the researchers. Consequently, this approach results in a discretization of the parameter space. In future work, we will investigate machine learning techniques for such modeling. This will result in automatic parameter extraction from collected data, and will provide the capabilities to handle continuous values. This becomes particularly important when autonomous agents are required to conduct decision-making over these features.

C. Attentional Metrics

Manipulation cues were defined as responses to deictic actions, such as pointing or orientation (dominant or subordinate [32]) of one body to a stimulus [6]; however, in this iteration of the study, the processed deictic referent features were too noisy to be useful. In future work, a model for recognizing pointing gestures will be trained to discriminate deictic behavior from other social activities [33].

D. Physiological Metrics

To our knowledge, this work is the first attempt at automatically annotating Hall's physiologically-inspired proxemic dimensions [34]. These metrics provide an alternative perspective to the classic approach taken in the analysis of proxemics; specifically, these dimensions determine the overall sensory experience of all interacting participants. This approach to the analysis of proxemic behavior has yet to be investigated by any computational model, and will be a distinguishing factor in our continued work.

E. Environmental Interference

Much of the analysis of proxemic behavior has been performed in controlled and idealized social scenarios; however, real-world social interactions occur in diverse sets of

domains and are subject to environmental interference (e.g., a noisy room, low-light conditions [17], etc.). We will extend existing metrics to account for these sources of interference, in particular with regard to Hall's physiological metrics [34].

F. Human-Robot Interaction

The long-term objective of this study of human spatial dynamics is to provide an artificial social agent (e.g., robot or virtual human) with the ability to respond to and replicate such behavior in a socially appropriate manner. Sensor data fed into a predictive model would allow the agent to recognize high-level interaction cues [3]. A generative model incorporated into an action selection system would allow the agent to produce the similar interaction cues that it was trained to recognize, in an effort to produce a predictable social response from the user.

ACKNOWLEDGMENTS

We would like to thank Louis-Philippe Morency for his insight in the experimental design process, and Mark Bolas and Evan Suma for their assistance in using the PrimeSensor. We would also like to thank Edward Kaszubski for his help in constructing the physical setup, and Dave Feil-Seifer for his assistance in using the Overhead Interaction Toolkit.

REFERENCES

- [1] E. T. Hall, *The Silent Language*. Doubleday Co.: New York, NY, 1959.
- [2] E. T. Hall, *Handbook for Proxemic Research*, 1st ed. American Anthropology Assn.: Washington, D.C., 1974.
- [3] R. Mead, A. Atrash, and M. J. Mataric, "Recognition of spatial dynamics for predicting social interaction," 6th ACM/IEEE International Conference on Human-Robot Interaction, Lausanne, Switzerland, 2011.
- [4] A. Kendon, *Conducting Interaction - Patterns of Behavior in Focused Encounters*. Cambridge University Press: New York, NY, 1990.
- [5] A. Mehrabian, *Nonverbal Communication*. Aldine Transaction: Piscataway, NJ, 1972.
- [6] D. McNeill, *Gesture and Thought*. Chicago University Press: Chicago, IL, 2005.
- [7] E. T. Hall, *The Hidden Dimension*. Doubleday Co.: New York, NY, 1966.
- [8] M. Argyle and J. Dean, "Eye-contact, distance, and affiliation," *Sociometry*, vol. 28, pp. 289-304, 1965.
- [9] J. K. Burgoon, L. A. Stern, and L. Dillman, *Interpersonal Adaptation: Dyadic Interaction Patterns*. Cambridge University Press: New York, NY, 1995.
- [10] H. Schöne. *Spatial Orientation: The Spatial Control of Behavior in Animals and Man*. Princeton University Press: Princeton, NJ, 1984.
- [11] L. A. Hayduk and S. Mainprize, "Personal space of the blind," *Social Psychology Quarterly*, vol. 43, no. 2, pp. 216-223, 1980.
- [12] D. P. Kennedy, J. Gläscher, J. M. Tyszka, and R. Adolphs. "Personal space regulation by the human amygdala," *Nature Neuroscience*, vol. 12, pp. 1226-1227, 2009.
- [13] G. H. Price and J. M. Dabbs Jr., "Sex, setting, and personal space: changes as children grow older," *Personal Social Psychology Bulletin*, vol. 1, pp. 362-363, 1974.
- [14] J. R. Aiello and T. D. Aiello, "The development of personal space: proxemic behavior of children 6 through 16," *Human Ecology*, vol. 2, no. 3, pp. 177-189, 1974.
- [15] S. E. Jones and J. R. Aiello, "Proxemic behavior of black and white first-, third-, and fifth-grade children," *Journal of Personality and Social Psychology*, vol. 25, no. 1, pp. 21-27, 1973.
- [16] J. R. Aiello, "Human spatial behavior," *Handbook of Environmental Psychology*, ch. 12. John Wiley & Sons: New York, NY, 1987.
- [17] L. Adams and D. Zuckerman, "The effect of lighting conditions on personal space requirements," *The Journal of General Psychology*, vol. 118, no. 4, pp. 335-340, 1991.
- [18] E. A. Geden and A. V. Begeman, "Personal space preferences of hospitalized adults," *Research in Nursing and Health*, vol. 4, pp. 237-241, 1981.
- [19] G. W. Evans and R. E. Wener, "Crowding and personal space invasion on the train: please don't make me sit in the middle," *Journal of Environmental Psychology*, vol. 27, pp. 90-94, 2007.
- [20] J. R. Aiello, D. E. Thompson, and D. M. Brodzinsky, "How funny is crowding anyway? Effects of group size, room size, and the introduction of humor," *Basic and Applied Social Psychology*, vol. 4, no. 2, pp. 192-207, 1981.
- [21] J. Cassell, J. Sullivan, S. Prevost, and E. F. Churchill, *Embodied Conversational Agents*. MIT Press: Cambridge, MA, 2000.
- [22] H. Kuzuoka, Y. Suzuki, J. Yamashita, and K. Yamazaki, "Reconfiguring spatial formation arrangement by robot body orientation," 5th ACM/IEEE International Conference Human-Robot Interaction, Osaka, Japan, pp. 285-292, 2010.
- [23] M. L. Walters, K. Dautenhahn, R. T. Boekhorst, K. L. Koay, D. S. Syrdal and C. L. Nehaniv, "An empirical framework for human-robot proxemics," *New Frontiers in Human-Robot Interaction*, Edinburgh, Scotland, pp. 144-149, 2009.
- [24] H. Huettnerrauch, K. S. Eklundh, A. Green, and E. A. Topp, "Investigating spatial relationships in human-robot interaction," *IEEE/RSJ International Conference on Intelligent Robots and Systems*, Beijing, China, 2006.
- [25] J. Mumm and B. Mutlu, "Human-robot proxemics: physical and psychological distancing in human-robot interaction," 6th ACM/IEEE International Conference on Human-Robot Interaction, Lausanne, Switzerland, pp. 331-338, 2011.
- [26] L. Takayama and C. Pantofaru, "Influences on proxemic behaviors in human-robot interaction," *IEEE/RSJ International Conference on Intelligent Robots and Systems*, St. Louis, Missouri, 2009.
- [27] J. N. Bailenson, J. Blascovich, A. C. Beall, and J. M. Loomis, "Equilibrium theory revisited: mutual gaze and personal space in virtual environments," *Presence*, vol. 10, no. 6, pp. 583-598, 2001.
- [28] P. Trautman and A. Krause, "Unfreezing the robot: navigation in dense, interacting crowds," *IEEE/RSJ 2010 International Conference on Intelligent Robots and Systems*, Taipei, Taiwan, 2010.
- [29] D. J. Feil-Seifer and M. J. Mataric, "Automated detection and classification of positive vs. negative robot interactions with children with autism using distance-based features," 6th ACM/IEEE International Conference on Human-Robot Interaction, pp. 323-330, 2011.
- [30] T. V. Oosterhout and A. Visser, "A visual method for robot proxemics measurements," 3rd ACM/IEEE International Conference on Human-Robot Interaction Workshop on Metrics for Human-Robot Interaction, Technical Report 471, Amsterdam, Netherlands, 2008.
- [31] S. E. Jones and J. R. Aiello, "A test of the validity of projective and quasi-projective measures of interpersonal distance," *The Western Journal of Speech Communication*, vol. 43, pp. 143-152, 1979.
- [32] E. A. Schegloff, "Body torque," *Social Research*, vol. 65, no. 3, pp. 535-596, 1998.
- [33] D. McNeill. *Gesture, Gaze, and Ground*. Lecture Notes in Computer Science, Springer-Verlag, pp. 1-14, 2005.
- [34] E. T. Hall, "A system for notation of proxemic behavior," *American Anthropologist*, vol. 65, pp. 1003-1026, 1963.
- [35] R. Sommer, "Sociofugal space," *The American Journal of Sociology*, vol. 72, no. 6, pp. 654-660, 1967.
- [36] B. Lawson, *Sociofugal and Sociopetal Space, The Language of Space*. Architectural Press: Oxford, UK, 2001.
- [37] S. M. Low and D. Lawrence-Zúñiga, *The Anthropology of Space and Place: Locating Culture*. Blackwell Publishing: Oxford, UK, pp. 61-62, 2003.
- [38] L. P. Morency, C. Sidner, C. Lee, T. Darrell, "Contextual recognition of head gestures," *International Conference on Multimodal Interactions*, Torento, Italy, pp. 18-24, 2005.