

# An Experimental Study of Station Keeping on an Underactuated ASV

Arvind Pereira, Jnaneshwar Das and Gaurav S. Sukhatme

**Abstract**—Dynamic positioning is an important application for marine vehicles that do not have the luxury of anchoring or mooring themselves. Such vehicles are usually large and have arrays of thrusters that allow for controllability in the sway as well as the surge and yaw axes. Most smaller boats however, are underactuated and do not possess control in the sway direction. This makes the control problem significantly more challenging. We address the station keeping problem for a small autonomous surface vehicle (ASV) with significant windage. The vehicle is required to hold station at a given position. We describe the design of a weighted controller that uses wind feed-forward to complement a Line-Of-Sight guidance controller to achieve satisfactory performance under slow-varying moderate wind conditions. We test the control system in simulation and in field trials with a twin-propeller ASV. Experiments show that the controller works very well in moderate wind conditions allowing the ASV to keep station with a position error of approximately one vehicle length.

## I. INTRODUCTION

In a nautical setting, a vessel is said to be engaged in station keeping either when it maintains a fixed position relative to other vessels, or a fixed position relative to a stationary object or given location. Here, we address a version of the latter problem in the case of a small autonomous surface vehicle (ASV).

We require an *underactuated* ASV to maintain its geometric center (*i.e.*, keep station) at a given GPS coordinate. This is an important capability for a ASV in many settings. We are motivated to study this problem in the course of developing robotic boats as aids to marine biologists doing field experiments (eg. water sampling, measuring physical and chemical properties of water).

Our focus is on the station keeping problem for a ASV without control in its sway axis. We do not require the vehicle to point in a particular direction, merely to hold its position. Our vehicle, shown in Figure 3, is a shallow-hull, two electric motor-propelled, single rudder craft equipped with a 3DMG-X1 Inertial Measurement Unit with an integrated magnetometer compass, a Garmin GPS 16A receiver, and an anemometer. It is 2.1 m long with maximum width 0.7 m, thruster separation 0.265 m and mass 62.3 kg.

This vehicle is relatively light and has substantial windage. Thus the principal challenge addressed in this work is for the craft to reject wind disturbances. Our overall strategy is for the controller to align the vehicle parallel to the wind direction and surging (moving forward or backward) as necessary.

We describe a simplified model of the ASV dynamics, and a control system designed to keep the vehicle at station. The controller utilizes a traditional Line-Of-Sight guidance controller to produce a desired heading which it tries to track

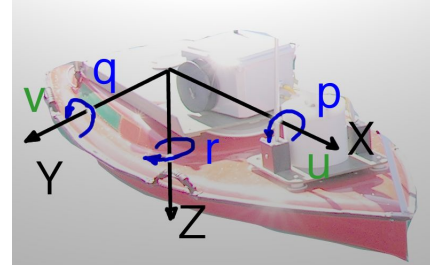


Fig. 1: Body-referenced velocities, rates and axes

until it is in close vicinity of the desired target location. Near the location, the behavior of the vehicle transitions into attempting to head into (or against) the wind, which we assume is the only significant external disturbance. We show results from simulation and field trials that attest to the efficacy of the approach - in moderate wind conditions our ASV keeps station on the order of one vehicle length.

### A. Related Work

An Autonomous Surface Vehicle (ASV) (also called an Unmanned Surface Vehicle (USV)) is a robot capable of carrying out a mission on the water surface without human assistance (or very limited human assistance). Such vehicles have varying capabilities, ranging from the simplest vehicles which have rudimentary guidance and navigation relying completely on pre-defined mission waypoints to more advanced versions which have the ability to avoid obstacles and reactively perform path planning. ASVs are very useful in automating tasks that would either be too expensive, dangerous or mundane for human operators to perform. Noteworthy examples are the Delfim ASV [14], the Autocat [10] and the ROSS [1], all designed for oceanographic and marine sensing.

Almost every ASV that is designed to perform dynamic positioning has redundant sets of thrusters and actuators. Station keeping is achieved by applying the necessary thrust in opposition to any measured external disturbance. For systems that operate in the ocean, care has to be taken to ensure that the ship is filtering out high-frequency wave disturbances [5]. [9] describes the use of acceleration feedback in dynamic positioning. In many applications vehicles that do not have control in their sway axis will be required to keep station in the vicinity of a particular location. Such, underactuated dynamic positioning is discussed in [7] which describes a feedback control law that keeps a model of a small boat in station in an asymptotic manner using accurate visual position feedback.

Our work follows the nonlinear control approach [6] designed for weather optimal positioning control. The system relies upon estimating a disturbance force and then using it for weather-vaning the vehicle into position. The control law proposed in [6] is designed for vehicles with multiple thrusters and the capability of simultaneously generating thrusts in the sway direction.

## II. MODELING AND IDENTIFICATION

### A. Model

In order to design the controller for dynamic positioning, we needed to use a suitable model. We begin with the general model described in [3], [12] which follows the standard notation described in [13].

Define the position-orientation vector  $\eta$  (wrt the inertial frame) as:

$$\eta = [n \ e \ d \ \phi \ \theta \ \psi]^T \quad (1)$$

$\phi$ ,  $\theta$ ,  $\psi$  are roll, pitch and yaw angles wrt the inertial frame, while  $n$ ,  $e$  and  $d$  are positions in the earth-referenced north-east-down (NED) inertial frame of reference. Define the linear-angular velocity vector  $\nu$  (wrt the body frame) as:

$$\nu = [u \ v \ w \ p \ q \ r]^T \quad (2)$$

The position-orientation rate vector  $\dot{\eta}$  is related to  $\nu$  by:

$$\dot{\eta} = J(\eta)\nu \quad (3)$$

The equations of motion of the ASV in the body frame are given by:

$$M_{RB}\dot{\nu} = \tau(\dot{\nu}, \nu, \eta) - C_{RB}(\nu)\nu \quad (4)$$

$M_{RB}$  is the mass-inertia matrix due to rigid body dynamics while  $C_{RB}(\nu)\nu$  is the matrix containing terms due to centripetal and coriolis forces and moments. The force and moment vector shown above, is defined as

$$\tau = \tau_{hyd} + \tau_{cs} + \tau_{prop} + \tau_{ext} \quad (5)$$

where  $\tau_{hyd}$  are the forces and moments due to the hydrodynamics of the hull,  $\tau_{prop}$  are the forces and moments due to the propulsion system (thrusters).  $\tau_{cs}$  are the forces and moments due to control surfaces (rudders and fins).  $\tau_{ext}$  are the forces and moments due to external disturbances (wind, currents and waves).

$$M\dot{\nu} + C(\nu)\nu + D(\nu)\nu_g(\eta) = [\tau] \quad (6)$$

For an ASV it is common to neglect the effect of pitch and roll, since the interaction of gravity and buoyancy keep the boat in equilibrium in the z-axis. We can therefore simplify the model to consider only the dynamics of the vehicle in SE2 to form a 3-DOF model. The equations mentioned above need to be modified slightly:

$$\dot{\eta} = R(\psi)\eta \quad (7)$$

where

$$R(\psi) = \begin{bmatrix} \cos\psi & -\sin\psi & 0 \\ \sin\psi & \cos\psi & 0 \\ 0 & 0 & 1 \end{bmatrix} \quad (8)$$

The Mass-inertia matrix consists of two parts  $M_{RB}$  and  $M_A$  [4].  $M_{RB}$  can be expressed as:

$$M_{RB} = \begin{bmatrix} m & 0 & 0 \\ 0 & m & mx_g \\ 0 & mx_g & I_z \end{bmatrix} \quad (9)$$

Next we turn to hydrodynamic forces and moments (assuming an ideal fluid, these include added mass, restoring forces and wave radiation-induced potential damping). In addition to potential damping there are other types of damping effects such as damping due to vortex shedding, skin friction and wave drift damping which are described in [2]. The true velocity of the vehicle  $v$  is related to the relative velocity of the hull wrt the currents in the water by:

$$v_r = v - v_c = [u_r, v_r, r]^T \quad (10)$$

Where the velocity of the current is given by:

$$v_c = \begin{bmatrix} V_c \cos \beta_c \\ V_c \sin \beta_c \\ 0 \end{bmatrix} \quad (11)$$

It is important to note that when the ASV is in the water, without the aid of a Doppler Velocity Log (DVL) or an Acoustic Doppler Current Profiler (ADCP) or some other form of measuring the relative flow, it does not have an estimate of the water current velocity. For simulations, however we can apply a current model without a sensor, although we might choose not to have the ability to measure it. This could help us design an estimator for water current in the future.

The hydrodynamic components are:

$$\tau_{hyd} = -M_A\dot{\nu}_r - C_A(\nu_r)\nu_r - d(\nu_r) \quad (12)$$

The other part of the Mass-Inertia matrix  $M$  is the added-mass matrix which is given by

$$M_A = \begin{bmatrix} -X_{\dot{u}} & 0 & 0 \\ 0 & -Y_{\dot{v}} & -Y_{\dot{r}} \\ 0 & -N_{\dot{v}} & -N_{\dot{r}} \end{bmatrix} \quad (13)$$

The damping force and moment vector consists of two parts, the forces and moments due to linear damping effects  $D_L$  and those due to non-linear effects  $D_{NL}$ . The non-linear portion of the damping terms is a function of higher-order velocity terms, which we assume to be very small at/near the set-point for dynamic positioning. Hence we are concerned mainly with  $D_L$ :

$$D_L = \begin{bmatrix} -X_u & 0 & 0 \\ 0 & -Y_v & -Y_r \\ 0 & -N_v & -N_r \end{bmatrix} \quad (14)$$

It is possible to make a further simplification to account for the relative velocity by introducing a slowly varying bias term  $b$  in the inertial frame as was done by Fossen & Strand

[6], where they used  $v$  as the velocity state and they assumed that the current  $v_c$  (and other un-modeled dynamics) were described by this bias term.

This simplified model is:

$$M\dot{v} + C(v)v + D(v)v = \tau + R(\psi)^T b + w(t) \quad (15)$$

For station-keeping simulations, it is convenient to neglect terms that rely upon higher order velocity terms such as the non-linear damping matrix as well as the coriolis and centripetal matrices.

We therefore arrive at the simple model for system dynamics which is given by:

$$M\dot{v} + D(v_r)v_r = \tau_{thr} + \tau_{ext} \quad (16)$$

### B. Data Collection

We performed several experiments to measure/estimate the parameters that describe the dynamics model of our ASV from equation 16. For the mass-matrix, we measured the weight and  $x_G$  of the boat. We estimated the inertia of the boat using the parallel axis theorem. We computed initial guesses for the added mass derivatives by approximating the ASV's hull to be half of a prolate hyper-ellipsoid using the methods described in [3]. At the time of writing this paper we have not identified any hydrodynamic parameters through tow-tank experiments although this would yield much more accurate results. We perform an offline estimation of the parameters of the ASV by using the System Identification  $^{TM}$  toolbox in Matlab<sup>R</sup>. To do this, we performed several maneuvers such as step maneuvers, circle maneuvers, spiral maneuvers to collect data that could be used to fit a model to it. The observable data was filtered using a 6-DOF strap-down Extended Kalman Filter which fuses data from a Microstrain 3DMG-X1 gyro-compass, a Crossbow Dynamic Measurement Unit and a Garmin GPS receiver. For the remaining unidentified hydrodynamic parameters which make up the damping matrix, we used values which were scaled to our vehicles dimensions from those which had been identified in [12] for a model ship. We had to modify these initial estimates slightly to produce behavior from our model which was similar to the real vehicle.

We also performed tests in a swimming pool to measure the thrust forces of the thrusters under near-static conditions. These tests involved applying commands to the thrusters on the boat and measuring the pull force generated by the boat on an electronic spring balance via a very thin and inflexible wire. We compute the torque generated by the thrusters at low velocities by using:

$$\tau_N = (T_{left} - T_{right}) \cdot dist \quad (17)$$

We convert between commands to the motor controller to thrust force using a lookup table. We believe this is reasonable since the relative velocity of the vehicle during dynamic positioning is  $U_r \approx 0$ .

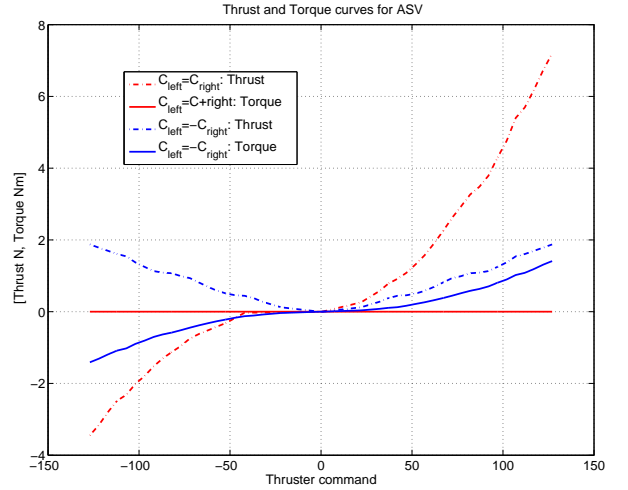


Fig. 2: Measured Thrusts and Forces generated by Thruster Commands under static conditions

### C. Simulator

The Marine Systems Simulator (MSS) [11] is a Simulink<sup>TM</sup> toolbox written specifically for Marine Control Systems. It provides a modular approach to simulate the behavior of most marine craft. The simulator follows all the conventions that we have described above. Since our primary aim was to study the ASV during dynamic positioning, we use the simplified model described in [3], [4].

$$M\dot{v} + D(v)v = \tau + \tau_{ext} \quad (18)$$

This model is a close approximation at surge speed  $u \approx 0$ , which is the regime we are interested in when station-keeping. We also have the output equation described in equation 19 which relies on the rotation matrix defined in equation 8.

$$\dot{\eta} = R(\eta)v \quad (19)$$

We use the simplified model of our vehicle in the Marine Systems Simulator to design, tune gains and test the performance of our station-keeping controller. Next (Section III) we give a brief description of the controller and a design rationale. We describe the essential blocks that make up our system (the Heading Autopilot, LOS guidance controller and the Feed-Forward model for wind). Finally we describe how we perform the weighted combination of these parts to assert the control action.

## III. CONTROL DESIGN

### A. Design Philosophy

Our ASV has a fairly large wind-profile (and a relatively low profile in the water). Hence it tends to drift fairly easily under the influence of wind. Even under winds with speeds  $\approx 1\text{m/s}$ , it has been observed to drift by more than 5m in a minute, if it is not actively trying to keep station. The

ASV is primarily designed to profile the water column by taking samples at different depths at a given latitude and longitude. This profiling is typically 2-3 minutes long at each location. The drift due to wind degrades the spatial accuracy of the sampling. We would like to therefore design a system that will try to overcome disturbances (primarily wind but eventually also currents) that move the boat from its desired location.

As mentioned before, the ASV is under-actuated and is incapable of producing a transverse thrust without the application of yaw and surge forces. Intuitively, one of the ways to stay at the desired location is to arrive at the location in a direction that is parallel to the disturbance and surging forward or reversing. With the simplifying assumption that the direction of the current is varying very slowly and that on average the wind and current are aligned, we design a controller to align with the direction of the wind when the ASV is close to the desired target. If it drifts away from this location, we design the control to try to turn back towards the location. As it approaches the desired location, the controller tries once again to align the ASV parallel to the wind direction.

Despite the disadvantages associated with our under-actuated ASV, the two thrusters provide it with the ability to turn (almost) in center. The movement of the turn-center is much smaller than the length of the boat, and hence for simplicity we assume that it turns about this center. Hence we can de-couple the surge and heading auto-pilots so as to apply surge forces and moments within certain limits of the actuators. Since the thruster produces lower forces in the reverse direction ( $\approx 7\text{N}$ ), we have limited the control in the derivative portion to allow the boat to turn (roughly) in center under the zero common-mode thrust allocation scheme.

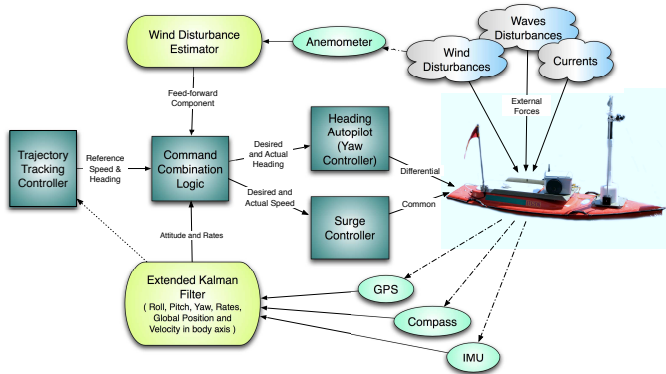


Fig. 3: Position Control System

### B. Heading Autopilot

Heading autopilots have been fairly well studied (see [1], [3]). For our positioning system we use a PD-control system which is described by the following equations:

$$\delta_{diff} = K_p(\psi_{des} - \psi) + K_d r \quad (20)$$

In equation 20,  $\delta_{diff}$  is the differential command that needs to be generated. While our boat has a rudder, we choose not to use it for our station-keeping because a rudder is not effective at low speeds. This differential command is then combined with the common-mode command  $\delta_{comm}$  which we describe later to produce commands for the actuators.  $r$  is the yaw-rate signal which is measured by the rate-gyro. We use a lookup table to map the desired thrust into a command for the motor controllers, which we obtained earlier as described in II. The equations 21 and 22 describe the thruster commands generated.

$$T_{left} = \delta_{comm} + \delta_{diff} \quad (21)$$

$$T_{right} = \delta_{comm} - \delta_{diff} \quad (22)$$

### C. Line Of Sight Guidance

Line of sight (LOS) guidance is a simple method of generating heading commands to drive a vehicle to the desired target location. If the current location of the vehicle is  $n_v, e_v$  in the Northing-Easting-Down frame of reference, and the desired target is  $n_t, e_t$  then the desired heading of the vehicle is given by:

$$\psi_{des} = \tan^{-1}\left(\frac{e_t - e_v}{n_t - n_v}\right) \quad (23)$$

Here  $\psi_{des}$  is the desired heading angle. It is defined to be positive clockwise wrt the axis that is true north. This is the same axis which we use for yaw on the vehicle. We compute the distance to the goal, which is essentially the quantity which we are trying to reduce by getting the boat to move toward it. This is given by:

$$\rho = \sqrt{(e_t - e_v)^2 + (n_t - n_v)^2} \quad (24)$$

In a typical LOS guidance system the vehicle assumes that it has reached the target destination when it is within a radius known as the acceptance radius. i.e. if  $\rho < \rho_{des}$ . For our purposes both  $\psi_{des}$  which we shall subsequently refer to as  $\psi_{desLOS}$  and  $\rho$  are used as inputs to the Weighting Controller which is called the command combination logic in Figure 3 and describes in Section III-E.

### D. Wind Feed Forward

We adapt the feed-forward model for wind described in [8], [3]:

$$u_a = u + U_A \cos(\psi_A - \psi) \quad (25)$$

$$v_a = v - U_A \sin(\psi_A - \psi) \quad (26)$$

$$U_a = \sqrt{u_a^2 + v_a^2} \quad (27)$$

$$\psi_a = \tan^{-1}(v_a/u_a) \quad (28)$$

$$X_A = 0.5\rho_A U_A^2 A_{TA} C_{XA}(\psi_a) \quad (29)$$

$C_{XA}$  is a non-linear function of  $\psi_a$  which is dependent on the windage offered by the boat at various incident angles to the wind. The force is related by a square law and thus the force experienced by the boat increases quite rapidly at speeds  $> 1m/s^2$ . We have obtained a very coarse model for this by computing by hand, the ratio of the area above water that is exposed to the wind to produce force at a discrete angles (0, 30, 45, 60).

#### E. Weighting Design

Our vehicle is under-actuated since it lacks the ability to apply a force perpendicular to the direction in which it is heading. Hence, it cannot directly apply a force sideways to compensate for disturbances that act perpendicular to it. We try therefore to get the vehicle to move into a space where its motion is within a band where it can follow trajectories similar to those used when parallel-parking a car.

In this work we ignore the effect of high and low-frequency wave as well as current disturbances. We choose instead to focus on a subset of the external disturbances, specifically those induced by wind. In our formulation, if we can constrain the boat to try to move along the imaginary line passing through the desired target location and in the same direction or against that of the wind, we can simplify the problem from constraining the vehicle within an X-Y plane to constraining it along this line.

Our basic strategy to achieve this is to switch between trying to reach the target when the ASV is away from it to aligning with the imaginary line (introduced above) which we call the *line of station-keeping*. If the vehicle is perfectly aligned with the wind, and if this is the dominant direction of the external forces, we expect that a forward or reverse thrust would drive the vehicle to the desired location. To achieve this, we implemented a PD-controller on the surge axis which was aided by the wind-feedforward force so as to cancel out the effect of the wind force while also improving the response of the vehicle.

In Figure 4 we show how we use the outputs of the *Line of Sight* controller to produce a sigmoidal weight ranging from 0 to 1, which causes the vehicle try to align with the line of station-keeping as  $\rho$  approaches 0. We state without proof, that by adjusting the parameters governing the sigmoidal function, we can tune the vehicle to generate commands to its heading auto-pilot that mimic a typical parallel parking trajectory - in the ASVs case it needs to parallel park on the line of station-keeping. Typically this weight  $W = (1 - W_{ang})$  should be  $\approx 0$  when the vehicle is away from the target and it should quickly become  $\approx 1$  in the near vicinity of the target. This distance usually is about the length of the vehicle (2.1m) in our case. It is very easy to produce a rapid inflection by adjusting the sigmoidal functions parameters. Our equation for  $W_{ang}$  is:

$$\psi_{desired} = \psi_{desLOS} + (1 - W_{ang}) * (\psi_{desLOS} - \psi_{desExt}) \quad (30)$$

where  $W_{ang}$  is computed by using a sigmoidal function that varies with how far the vehicle is from the target i.e.,  $\rho$ .

$$W_{ang} = \frac{1}{1 + c_{ang} \exp^{-k_{ang} * \rho}} \quad (31)$$

In our experiments  $c_{ang}$  is chosen to be 100,  $k_{ang}$  is chosen to be 4.

When the vehicle is very close to the target, there will be times when it might overshoot the target. If we use the heading from the LOS controller directly we will end up having to turn around which is an expensive operation. Such a behaviour would result in poor tracking performance as well. Instead if  $abs(\psi_{desired} - \psi) > \frac{\pi}{2}$  then we set  $\psi_{desired} = \psi + \pi$  and change the sign on the common-mode thrust.

We introduce another weighting factor which reduces the common-mode thrust of the vehicle when it needs to turn by a larger angle. We refer to this weight as  $W_{Tr}$ . Setting this gain to reduce thrust for small angles will prevent the vehicle from applying sufficient forward force. Hence, we tune it to come into play only when the vehicle has been pushed outside an error bound, without having to move too far away from the target. We might want the ASV to turn around especially if the external disturbance is too strong for the vehicle to handle when it is reversing into it. This can be inferred from Figure 2, which shows that the thrust produced by a thruster is significantly smaller for the same command in the reverse direction than it is for that in the forward direction. This weight therefore provides us with a built-in way of causing the boat to turn around when  $\rho > \rho_{des}$  which is a radius around the target which we take to be roughly 2 times the length of our vehicle. We enforce a no-reverse behavior when it is outside this boundary. We have avoided depicting this detail in Figure 4 to avoid clutter.

$$W_{Tr} = \frac{1}{1 + c_{Tr} \exp^{-k_{Tr} abs(\psi_{desired} - \psi)}} \quad (32)$$

The simulink block diagram in Figure 4 describes the entire combination and thrust generation scheme.

#### IV. SIMULATION STUDIES

Figure 5 is a plot from simulation data which we use to illustrate the behavior of our controller. The ASV is initially oriented north and receives a desired target location of UTME=8m, UTMN=0m. Since the target location produces a large change in angle, the boat turns in center first (due to  $W_{Tr}$ , and then heads off in the direction of the target location. When it reaches near the target,  $W_{ang}$  becomes very small, and causes the vehicle to align with/against the wind. It turns out that due to the configuration in which the boat arrives in the vicinity of the location (drift due to wind had some role to play here), it turns back toward the location and starts doing a set of parallel parking maneuvers to stay on the line opposite to the wind. As we can see the vehicle ends up having a steady state error in this case.

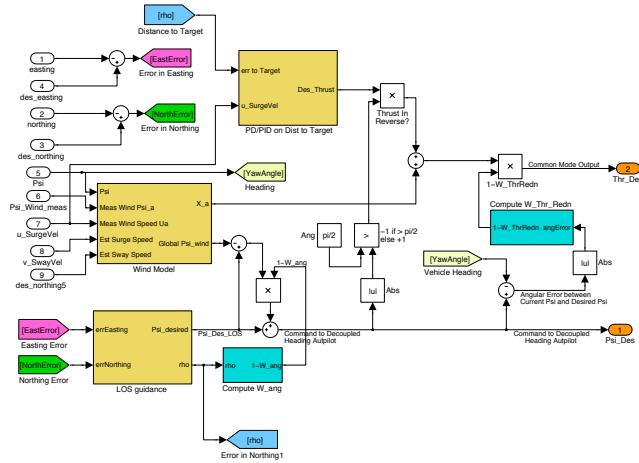


Fig. 4: Block Diagram of the Command Combination Logic

Consider the performance of the vehicle keeping station at (8,0) under wind speed of magnitude 2m/s (Figure 5).

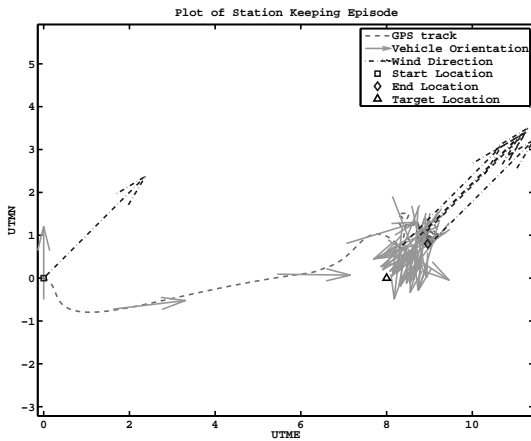


Fig. 5: Study of a Station-Keeping episode with no integral action

We observe from Figures 5 and 6 that without integral action, the boat will end up in a configuration where it usually has a steady-state error. We now compare this with another version of the controller with integral action. The integral action, as expected helps reduce the steady state error.

As can be seen in figure 7 above, in simulation, despite noisy wind sensor measurements, the boat manages to stay within 1m of the desired location by trying to align with the wind. As we can see from figure 9 over 95% of the time spent by the simulated vehicle is within 1.2m for wind speeds of 2m/s and below.

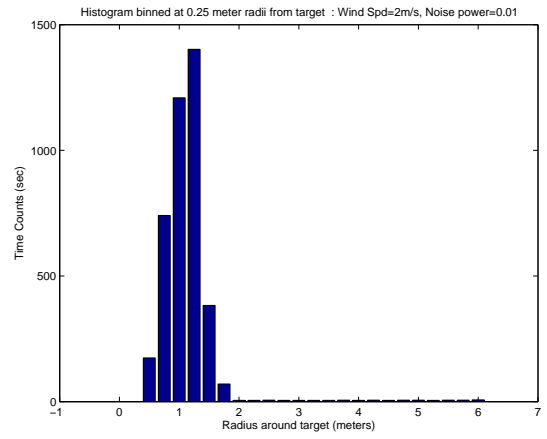


Fig. 6: Histogram for the Station-Keeping Episode with no integral action

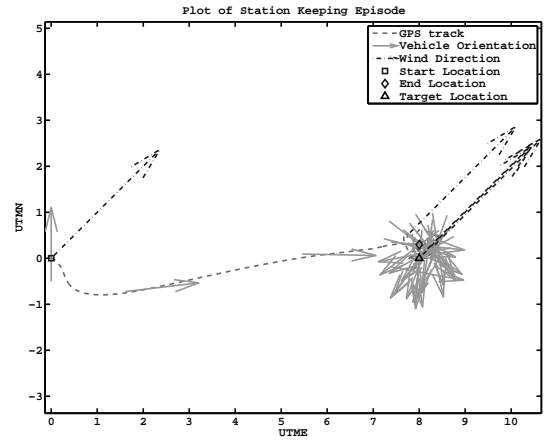


Fig. 7: Station Keeping Episode with Integral Action. Wind Speed=2m/s

## V. RESULTS FROM FIELD EXPERIMENTS

Figure 10 shows 5 episodes of station keeping of roughly 5 minutes each which were conducted with the ASV at a lake. The longer dotted arrows depict wind direction and shorter arrows depict the orientation of the vehicle. The length of the arrows is roughly the length of the boat. The lower part of the arrows always passes through the GPS-track at near quarter-length. This is because the GPS receiver is placed aft in the boat at this location. We also plot the target location (which is a triangle). As we can see, test results from the field show that the vehicle is able to hold station to within 2.8m from the target in the wind conditions prevalent during the day which ranged from 0 to  $2.6ms^{-1}$ . The variation in the average wind direction on the day of the test was within  $\pm 15^\circ$ . The performance of the vehicle varies as the controller used did not have integral action. In episode 6, the wind speeds were fairly high and erratic, which resulted in a larger

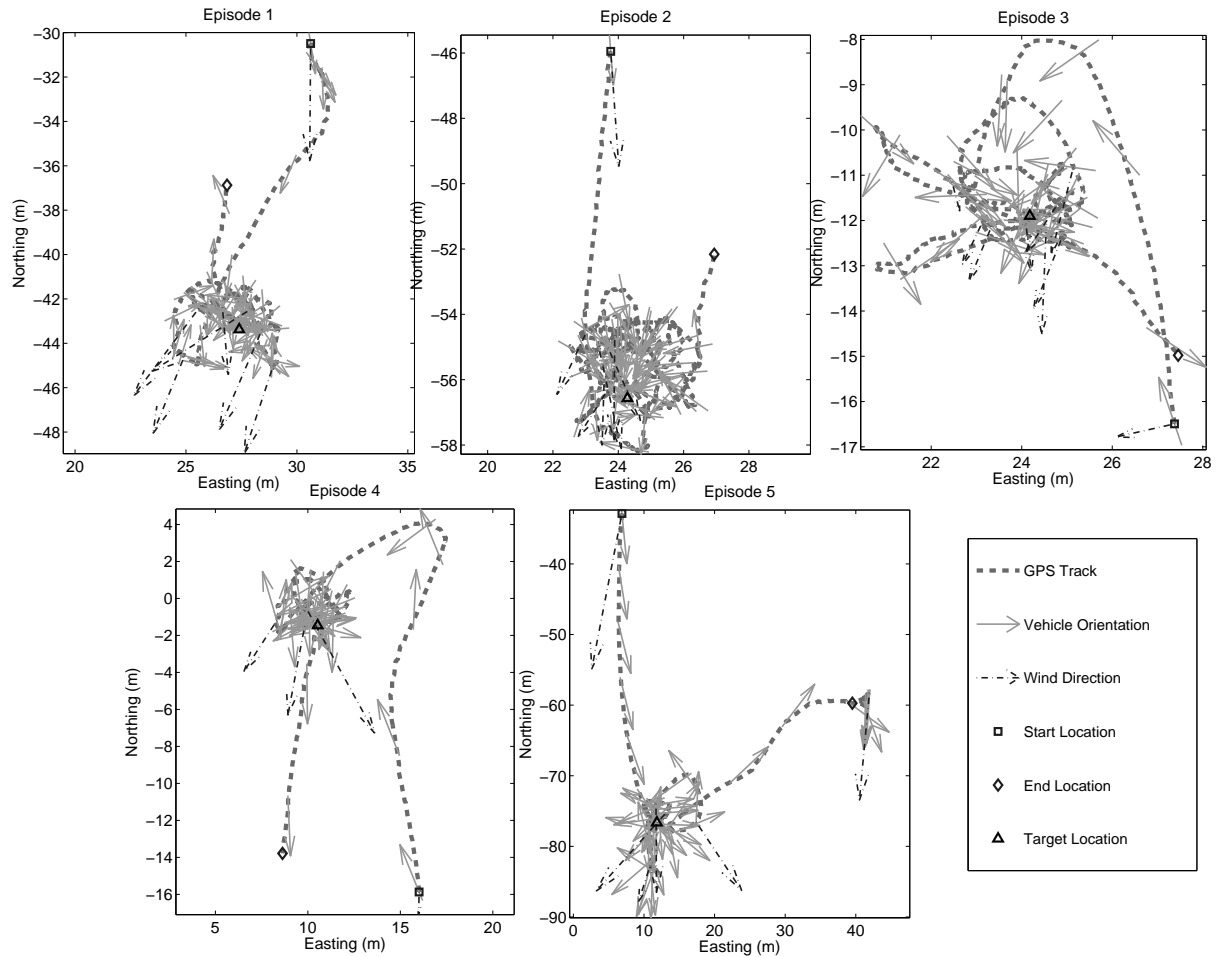


Fig. 10: Plots of station-keeping episodes 1 through 5

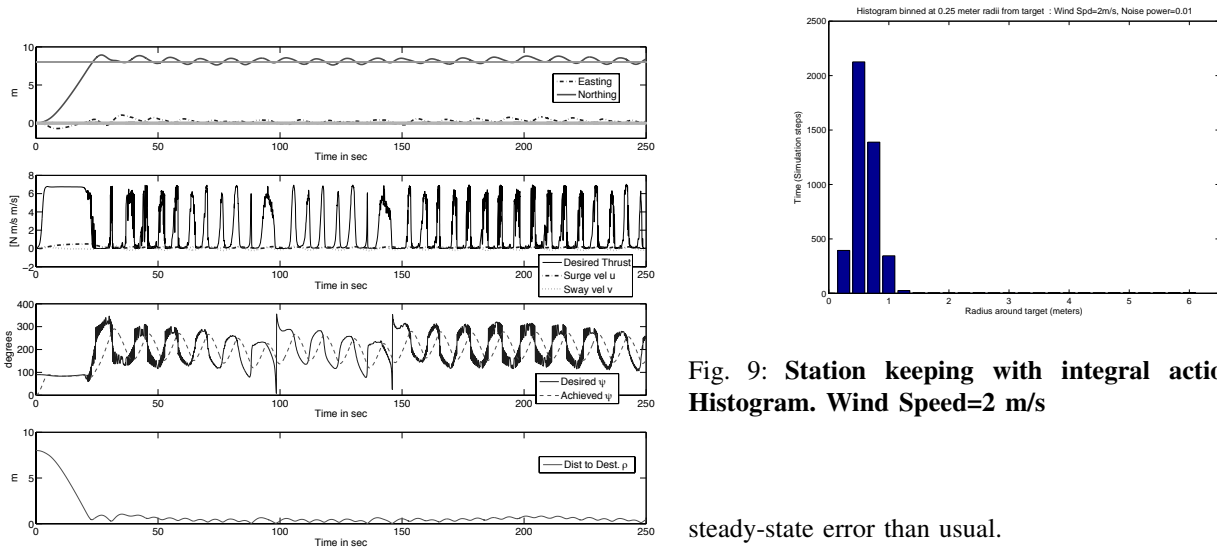


Fig. 9: Station keeping with integral action episode Histogram. Wind Speed=2 m/s

Fig. 8: Time evolution of position, velocity, desired heading, achieved heading and  $\rho$  v/s time for the integral action case

steady-state error than usual.

At the time of writing this paper we have not tested the performance of integral action on the performance of the vehicle. This integral action which builds up with time when a small steady-state error gets introduced is used to produce a thrust that will start matching the disturbance.

One interesting issue that we see is that stochastically,

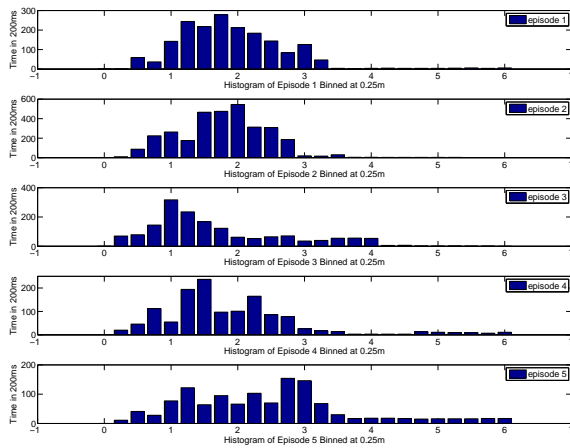


Fig. 11: Histograms binned at radii of 0.25 around targets for episodes 1 through 5

the boat spends more time trying to reverse to the station location. This is because we believe that at relatively high winds, the moments generated make holding the heading against the wind direction very difficult, since the dynamics are similar to an inverted pendulum.

When the vehicle is reversing however, it fares much better at aligning with the wind (as this is the angle where there is the least resistance with the wind), although it becomes difficult for the vehicle to perform de-coupled heading effectively. We believe this performance can be improved by designing a controller specifically for reverse thrusts.

From the histograms of preliminary tests of the boat in Figure 11 we can see that 90% of the time, the boat's position is  $< 2.8m$  away from the target. This is comparable to the length of the vehicle which is 2.1m.

## VI. CONCLUSION

In this paper we describe a model and controller designed for small ASV station keeping. Since the vehicle is underactuated we allow it freedom of movement in yaw and attempt to control only its position. We introduced a simple method of weighting between the line-of-sight controller and aligning with the external disturbance (this paper focuses on wind). We find from simulation studies that we should be able to improve the performance of our vehicle by using integral action. The vehicle spent 90% of the total time in each station keeping episode within 3 m from the target. In simulation, we find that the results are slightly better and the boat is better at heading into the wind. We believe this is partially because the moment generated by higher wind-speeds can de-stabilize the vehicle much like a hydrodynamic moment [15]. would. From observations in the field, the boat spends a fair amount of time heading along the direction of the wind while applying reverse thrust.

We are interested in being able to generalize this controller so that it will work with a general disturbance force and

not necessarily one which is primarily governed by wind. Estimating the unknown resultant of currents and winds is a natural extension of the problem. In the future we plan to work toward solving the problem with an optimal control framework which might allow more efficient station keeping.

## REFERENCES

- [1] Elgar Desa, Pramod K Maurya, Arvind Pereira, Antonio Pascoal, and R.G. Prabhudesai. A small autonomous surface vehicle for ocean color remote sensing. *IEEE JOURNAL OF OCEANIC ENGINEERING*, 32(2):353–364, April 2007.
- [2] Odd M. Faltinsen. *Sea Loads on Ships and Offshore Structures*. Ocean Technology Series. Cambridge University Press, first edition, 1990.
- [3] Thor I. Fossen. *Guidance and Control of Ocean Marine Vehicles*. John Wiley and Sons Ltd. New York, 1994.
- [4] Thor I. Fossen. *Marine Control Systems: Guidance, Navigation and Control of Ships, Rigs and Underwater Vehicles*. Marine Cybernetics, Trondheim, 2002.
- [5] Thor I. Fossen and Øyvind N. Smogeli. Nonlinear time-domain strip theory formulation for low-speed manoeuvring and station-keeping. In *Modeling, Identification and Control*, volume 25, pages 201–221, 2004.
- [6] Thor I. Fossen and Jann Peter Strand. Nonlinear passive weather optimal positioning control (wopc) system for ships and rigs: experimental results. In Hassan K. Khalil, editor, *Automatica*, volume 37, pages 701–715, 2001.
- [7] IEEE Transactions of Control Systems Technology. *Underactuated Dynamic Positioning of a Ship - Experimental Results*, volume 8, September 2000.
- [8] Edward M. Lewandowski. *The Dynamics of Marine Craft - Manoeuvring and Seakeeping*, volume 22 of *Advanced Series on Ocean Engineering*. World Scientific, Computer Sciences Corporation, Washington DC, USA, 2004.
- [9] Karl-Petter W. Lindegaard. *Acceleration Feedback in Dynamic Positioning*. PhD thesis, Department of Engineering Cybernetics, Norwegian University of Science and Technology, NO-7491 Trondheim, NORWAY, Sept 2003.
- [10] J.E. Manley, A. Marsh, and W. Cornforth et Al. Evolution of the autonomous surface craft autocat. In *Proceedings of MTS/IEEE OCEANS*, volume 1, pages 403–408. Massachusetts Institute of Technology, Cambridge MA, USA, Sept 11-14 2000.
- [11] T. Perez, T. I. Fossen, and A. J. Sørensen. An overview of the marine systems simulator. Technical report, Norwegian University of Science and Technology NTNU, 2004.
- [12] Roger Skjetne, Øyvind N. Smogeli, and Thor I. Fossen. A nonlinear ship manoeuvring model: Identification and adaptive control with experiments for a model ship. *Modeling, Identification and Control*, 25(1):3–27, 2004.
- [13] SNAME. Nomenclature for treating the motion of a submerged. Technical and Research Bulletin 1-5, The Society of Naval Architects and Marine Engineers, 29 W 39th Street, New York 18, N.Y., April 1950.
- [14] ASIMOV Team. Robotic ocean vehicles for marine science applications: The european asimov project. In *MTS/IEEE OCEANS*, volume 1, pages 409–415, 2000.
- [15] Michael S. Triantafyllou and Franz S. Hover. Manoeuvring and control of marine vehicles. Technical report, Massachusetts Institute of Technology, Department of Ocean Engineering, Massachusetts Institute of Technology, Cambridge, MA USA, 5 2003.