

A Hands-Off Physical Therapy Assistance Robot for Cardiac Patients

Kyong Il Kang, Sanford Freedman and Maja J Matarić

Interaction Laboratory
Computer Science Department
University of Southern California
941 West 37th Place
Los Angeles, CA 90089-0781
{kyongkan|sfreedma|mataric}@usc.edu

Mark J. Cunningham and Becky Lopez

Department of Cardiothoracic Surgery
Keck School of Medicine
University of Southern California
1510 San Pablo Street, Suite 415
Los Angeles, CA 90033-4612
{mcunningham|bmlopez}@surgery.usc.edu

Abstract—This paper presents a feasibility study of using a socially-aware, autonomous robot to assist hospitals in reducing the effects of nursing shortages. A hands-off assistive robot is described that provides motivation and support for cardiac patients who must perform regular but painful breathing exercises. Initial validation of the system has garnered positive responses from test subjects and shows that robots have a potential to aid nursing staff in some tasks requiring patient interaction.

I. INTRODUCTION

Registered nurses play a vital role in the care of patients. Unfortunately, there is an ongoing nursing shortage affecting medical institutions nation-wide and it is expected to worsen in the future [1]. The population of the United States is aging, with a predicted increase of 36 million people over 65 between the years 2000 and 2030 [2]. The problem is further compounded by the aging of the registered nurses themselves. Far fewer young people are entering the field of nursing today than in the past [3], while the percentage of female nurses over the age of 35 is on the rise. The nursing shortage is not specific to the United States, but is a world-wide problem [4]. Reduced nurse staffing means that each nurse must assume additional responsibilities and increased work volume, sometimes including mandatory overtime. Each additional patient can increase the chance of nurse burnout by 23% and job dissatisfaction by 15%. The resulting nurse turnover is not only financially draining (\$42,000 for a hospital medical and surgical general unit and \$64,000 for a specialty nurse), but compounds the overall shortage problem. The lives and well-being of patients are directly affected. Recent studies have shown that each patient added to a nurse's workload increases the chance of patient mortality by 7% [1]. Furthermore, the frequency and severity of non-mortal complications rise with additional nurse workload [5].

The work presented in this paper aims to address the nurse shortage problem through the development of socially-aware assistive robots capable of freeing nurses of selective repetitive and time-consuming patient interactions. By providing robot assistance to patients, nurses are allowed greater flexibility in directing their efforts. In this paper, we describe a robot system capable of assisting nurses by helping cardiac patients in a repetitive, time-consuming and often painful

breathing (spirometry) exercise.

II. RELATED WORK

Assistive robotics focuses on aiding those in need, including patients, the elderly, and individuals with disabilities. As a robot task domain, it has received a growing attention in the past couple of decades [6]. Most relevant to our research, assistive robotics can be partitioned into two distinct categories: hands-on non-interactive assistive devices/robots and hands-off interactive assistive robots.

The hands-on assistive devices and robots have been developed using a variety of approaches. The ProVAR project [8], originating from the DeVAR project [7], developed a fixed robotic workstation to assist in vocational activities. MIME [9] and MIT-Manus [10] also employed manipulator-mounted fixed robots to assist stroke patients during physical therapy. The recovery of stroke-afflicted limbs requires numerous repetitive exercises. These two robots help the patients by physically supporting their limbs with mechanical manipulators, allowing the patient to spend an increased amount of time on therapeutic activities. Manipulator-mounted wheelchair robots are another active areas in rehabilitation robotics, which involves a mobile robot component [11], [12]. In general, this family of hands-on assistive robotics typically (but not exclusively) aid patient mobility through physical contact and with minimal if any interactive capabilities.

In contrast, the hands-off intelligent assistive robot approach minimizes safety concerns by avoiding, and in many cases entirely eliminating, physical contact with the patient. Pearl the Nursebot [13], the successor of Flo [14], aims at hands-off interactive assistance for the elderly. The major functions of this robot are daily routine reminder and facility guidance. The appearance of Pearl was designed to facilitate interaction and minimize intimidation. Care-O-Bot [15] is another hands-off assistive robot, designed to help the elderly and the handicapped with their household tasks, such as fetching objects. The system also serves as a communication platform, allowing the patients to watch TV or call a doctor, by interacting through a speech interface or a touch-screen. However, few hands-off assistive robots to date have been developed to help medical patients by assisting their physical therapy. In the work we propose, the safety advantages of

hands-off assistive robots are used in combination with social interaction to enable a mobile robot, Clara, to serve as a practical physical therapy assistant in the process of post-cardiac surgery recovery.

III. APPROACH

A. General Philosophy and Task

Our work aims to endow assistive robots with three inter-related traits: social awareness, autonomy, and the lack of tactile input or physical manipulation. Social awareness is to be used for performing tasks that involve social interaction with patients. Autonomy frees up nurse time; the robot must be able to complete tasks autonomously as well as collect, store, and report the data to the medical staff for subsequent analysis and diagnosis. The hands-off nature of the system allows the other two components, autonomy and social awareness, to be performed safely and therefore more readily introduced into hospital environments.

The work described in this paper is a feasibility study aimed at determining the acceptance of a system with the above capabilities (implemented at the basic, non-sophisticated level). We chose to focus on the *spirometry exercise* as the target assistive task. Cardiac patients post-surgery need to perform regular lung exercises in order to prevent infection and facilitate recovery. During these workouts, normally assisted by a cardiac nurse, the patient is asked to use a spirometer, a small plastic device designed to measure the amount and velocity of inhaled air. The patient slowly inhales to a predetermined volume. The volume is increased as the patient recovers. Through this activity, the patient's lungs are forced to fully expand and contract, providing exercise and preventing pneumonia. For maximal benefit, the spirometry exercise must be performed ten times per hour for several days, in some cases weeks, after cardiac surgery. While technical skill in using the spirometer and teaching the patient is required in the first couple of sessions, the vast majority of the remaining sessions require monitoring and motivation. We developed Clara, shown in Fig. 1, an autonomous assistive robot that encourages and monitors spirometry exercises.

B. Evaluation Testbed

Clara is constructed with standard off-the-shelf products. Mobility and primary battery power are provided by an ActivMedia Pioneer 2 DX robotic mobile platform. A 1 GHz Pentium III computer running Gentoo Linux resides inside, controlling the motors and providing basic I/O support. The sensors on the robot include a laser range-finder, a camera, and a microphone. The laser is a SICK LMS200 with a 180° field of view, used for obstacle avoidance and localization; its height was chosen so that the feet of the hospital beds could be reliably detected. The vision system consists of a Sony EVI-D30 pan-tilt-zoom camera with a 640 × 480 frame-grabber. This video signal is fed through to an ACTS color-tracking server, which provides color blob detection. Acoustic perception is generated with a Shure 503BG unidirectional dynamic microphone designed for computer voice



Fig. 1. An image of Clara

recognition. The microphone has a frequency response of 100Hz to 7kHz, and is amplified by a Rolls Personal Monitor Amp+ and sent through the sound card (in the base of the robot) running the CMU Sphinx 2 (version selected for reduced CPU requirements) voice recognition engine. The robot uses a standard unpowered computer speaker to communicate with the user, and plays pre-recorded speech by a female speaker. A 2 GHz Linux laptop was used to run the control and interaction algorithm and its 15" screen for displaying Clara's face with the video playback application MPlayer. Player [16], a robot device server, was used for inter-component communication. The physical components were mounted on a custom-built 54" chassis.

C. Control Approach

Clara's control architecture sequences behaviors that handle navigation, patient interaction, and spirometer tracking. As part of navigation, to simplify the robot's localization within the hospital room as well as to maximize safety, the system used a single laser-reflective fiducial marker taped to each patient's bed. Fig. 2 shows the hospital room environment we constructed in our lab, which was based on actual rooms at the USC Hospital cardiac ward, where Clara will next be tested.

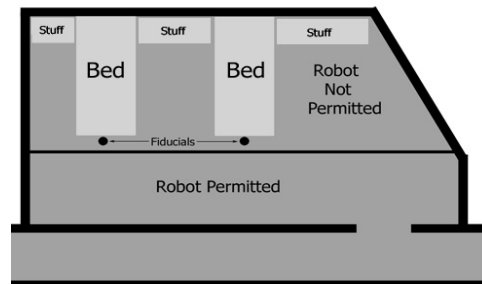


Fig. 2. Example hospital room set-up

Clara’s control system consists of four capabilities or behaviors: finding the patient, interacting with the patient, tracking the spirometer, and returning to the starting location. Fig. 3 overviews Clara’s control flow. Finding the patient begins with left wall following along the hallway, through the room door, and up to the patient’s bed where the reflective fiducial is detected. Next, the interaction behavior component takes over. The patient is asked if s/he is willing to perform a spirometry exercise. If the answer is yes (detected either through a speech interface or with a color marker), Clara asks if instructions for using the spirometer are needed, and then either provides them or proceeds directly to the exercise. Clara directs the patient to hold the spirometer and the control system then enters the spirometer tracking component. Using color markers on the spirometer and the color blob-tracking algorithm, the patient’s breaths are counted and recorded until the patient removes the spirometer from Clara’s field of view. Upon this occurrence, the exercise is assumed to have concluded; Clara thanks the patient and the control system enters the final component, returning the robot to the starting position. This is achieved by reversing its path and executing the right wall following behavior.

IV. EVALUATION

The first step in validating the feasibility and effectiveness of the above-described assistive robot involved experiments with healthy non-patient subjects. The experiments were performed in the USC Interaction Laboratory, in the emulated hospital room, and supervised by expert cardiac ward staff. Five USC students served as the experimental subjects; they wore hospital gowns and used authentic hospital spirometers modified only with the color patch for ease of breath monitoring (described above). After the experiments, the subjects were asked to fill out a questionnaire reporting their impressions of the robot. Fig. 4 shows the robot interacting with a subject; videos of the experiments can be found at http://robotics.usc.edu/interaction/?l=Research:Projects:Hands_Off:index.

The experiments showed that all of Clara’s control components performed successfully. However, the speech recog-

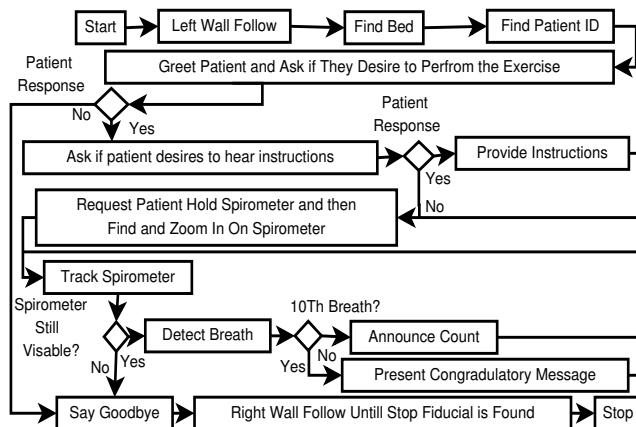


Fig. 3. Control flow of Clara’s architecture

TABLE I

QUESTIONNAIRE RESULTS OF THE FIVE TEST SUBJECTS.

Questions	A lot	Somewhat	No
Is robotic assistance of spirometry exercise a good idea?	3	2	0
Did the robot assist your exercise?	1	3	1
Did you enjoy your assisted exercise?	1	4	0
Did you like interacting with the robot?	3	2	0

nition system failed to recognize the voice of one subject of the five, due to the softness of the voice. The problem was in part caused by the acoustics of the laboratory’s environment, which involved a large open space with noisy background. Fortunately, when Clara was subsequently tested in an actual hospital room, the speech recognition system performed successfully. The speech recognition system is effective if properly tuned.

Table I summarizes the data collected from the patient questionnaires. All subjects were interested in the robot-assisted spirometry exercise and enjoyed the interaction with the robot. The subjects also provided overall satisfaction ratings reflecting how helpful they considered the robot to be in assisting in their spirometry exercise. The average overall satisfaction rating was 84.6%.

The subjects provided the following suggestions about improving the system: 1) an elaboration of the instructions, so they could better understand how to perform their spirometry exercise while assisted by Clara; 2) the improvement of the speech recognition system; and 3) the use of richer interaction, involving more interactive conversation. We are currently addressing all of these issues, and others, as discussed in the next section.

V. CONTINUING AND FUTURE WORK

Based on user feedback resulting from the experiments and experiences with Clara, considerable work still remains. Clara’s user input subsystems, mainly voice recognition, must be further developed to improve accuracy and reduce patient strain. Safety also remains a primary issue. Hospitals have highly dynamic environments that can hinder a robot’s ability to perform obstacle detection and avoidance. A more comprehensive system for collision avoidance will be incorporated.



Fig. 4. Clara assisting a patient with the spirometry exercise

Most relevant to our research interests, Clara will be equipped with a richer set of behaviors. We will experiment with different means of patient motivation, through the use of verbal games, sounds, and robot movement. Furthermore, alterations to the physical appearance of the robot will be investigated as an additional path toward patient motivation and engagement.

While the above directions will focus on patient interaction, further work will also be undertaken to improve Clara's direct effect on nurse efficiency. In addition to developing an accessible database of patient spirometry performance, we will also investigate the possibility of combining increased navigational abilities and task queueing. This will avoid the need of having nurses direct the robot to specific patient rooms. Finally, an exploration will be made into which additional tasks are well suited for Clara to perform in the hospital environment. The more and varied Clara's repertoire, the more useful she will be.

VI. CONCLUSION

This paper has suggested a means of reducing nurse workload through the use of autonomous socially aware robots. Initial feasibility of this approach has been demonstrated by Clara, a robot that assists patients in repetitive spirometry exercises.

We hope that, through further development, additional tasks well suited for assistive robotics will be identified, helping to increase nurse efficiency. We do not advocate or aim to replace hospital nurses, whose expertise is irreplaceable, but instead to help them to focus their time and resources, and improve patient well-being, through the use of assistive interactive robotics.

VII. ACKNOWLEDGMENTS

This work was supported by the USC Provost's Center for Interdisciplinary Research and by the Okawa Foundation.

REFERENCES

- [1] L. H. Aiken, S. P. Clarke, D. M. Sloane, J. Sochalski, and J. H. Silber, Hospital Nurse Staffing and Patient Mortality, Nurse Burnout, and Job Dissatisfaction, *The Journal of the American Medical Association*, vol. 288, no. 16, 2002, pp. 1987-1993.
- [2] M. R. Goulding, M. E. Rogers, and S. M. Smith, Public Health and Aging: Trends in Aging - United States and Worldwide, *The Journal of the American Medical Association*, vol. 289, no. 11, 2003, pp. 1371-1373.
- [3] P. I. Buerhaus, D. O. Staiger, and D. I. Auerbach, Implications of an Aging Registered Nurse Workforce, *The Journal of the American Medical Association*, vol. 283, no. 22, 2000, pp. 2948-2954.
- [4] J. Spetz, and R. Given, The Future Of The Nurse Shortage: Will Wage Increases Close The Gap?, *Health Affairs*, vol. 22, no. 6, 2003, pp. 199-206.
- [5] J. Needleman, and P. Buerhaus, Nurse staffing and patient safety: current knowledge and implications for action, *International Journal for Quality in Health Care*, vol. 15, no. 4, 2003, pp. 275-277.
- [6] M. Hillman, Rehabilitation robotics from past to present - a historical perspective, in *Proceedings of the International Conference of Rehabilitation Robotics 2003*, Kaist, Daejeon, Korea, April 2003.
- [7] M. Van der Loos et al, Design and Evaluation of a Vocational Desktop Robot, in *Proceedings of the Rehabilitation Engineering and Assistive Technology Society of North America 12th Annual Conference*, New Orleans, USA, 1989.
- [8] J. J. Wagner, M. Wickizer, H. F. M. Van Der Loos, L. J. Leifer, User testing and design iteration of the ProVAR user interface, in *8th IEEE International Workshop on Robot and Human Interaction*, Pisa, Italy, September 1999, pp. 18-22.
- [9] P. C. Shor, P. S. Lum, C. G. Burgar, H. F. M. Van Der Loos, M. Majmundar, and R. Yap, The effect of Robotic-Aided therapy on upper extremity joint passive range of motion and pain, *Integration of Assistive Technology in the Information Age*, 2001, pp. 79-83.
- [10] H. I. Krebs, B. T. Volpe, M. L. Aisen, W. Hening, S. Adamovich, H. Poizner, K. Subrahmanyam, N. Hogan, Robotic applications in neuromotor rehabilitation, *Robotica*, vol. 21, no. 1, 2003, pp. 3-12.
- [11] M. Hillman, K. Hagan, S. Hagan, J. Jepson, and R. Orpwood, A Wheelchair Mounted Assistive Robot, in *Proceedings of the International Conference on Rehabilitation Robotics*, Stanford, California, USA, July 1999, pp. 86-91.
- [12] R. M. Mahoney, The Raptor Wheelchair Robot System, *Integration of Assistive Technology in the Information Age*, 2001, pp. 135-141.
- [13] M. Montemerlo, J. Pineau, N. Roy, S. Thrun, and V. Verma, Experiences with a Mobile Robotic Guide for the Elderly, in *Proceedings of the AAAI National Conference on Artificial Intelligence*, Edmonton, Canada, 2002.
- [14] N. Roy, G. Baltus, D. Fox, F. Gemperle, J. Goetz, T. Hirsch, D. Margaritis, M. Montemerlo, J. Pineau, J. Schulte, and S. Thrun, Towards Personal Service Robots for the Elderly, *Workshop on Interactive Robots and Entertainment*, 2000.
- [15] B. Graf, M. Hans, J. Kubacki, and R. D. Schraft Robotic home assistant Care-O-bot II, in *Proceedings of the Second Joint EMBS/BMES Conference*, vol. 3, Houston, Texas, USA, October 2002, pp. 2343-2344.
- [16] R. T. Vaughan, B. Gerkey, and A. Howard, On Device Abstractions For Portable, Resuable Robot Code, in *Proceedings of the IEEE/RSJ International Conference on Intelligent Robot Systems*, Las Vegas, Nevada, USA, October 2003, pp. 2121-2427.