

Increasing Persistent Navigation Capabilities for Underwater Vehicles with Augmented Terrain-Based Navigation

Gregory Murad Reis^{1*}, Michael Fitzpatrick², Jacob Anderson²,
Leonardo Bobadilla¹, and Ryan N. Smith²

¹School of Computing and Information Sciences, Florida International University, Miami, FL 33174

²Robotic GNOME Laboratory, Department of Physics and Engineering, Fort Lewis College, Durango, CO 81301

The dynamics of, and limited communication capabilities in, the ocean environment make navigation and localization difficult, especially in coastal regions where most interesting phenomena occur. Current navigation techniques rely either on high-powered sensors (e.g., Doppler Velocity Loggers) resulting in decreased deployment time, or dead-reckoning (compass and IMU) with motion models resulting in poor navigational accuracy due to unbounded sensor drift. Before satellite-based navigation (e.g. GPS) became popular, long-distance navigation systems for missiles were developed by comparing data from an embedded altimeter with the ground elevation that was given or predicted by a stored map. The utility of terrain-based navigation (TBN) for underwater vehicles was limited due to the poor resolution of bathymetric maps and the inability to bound sensor drift; nevertheless, updated bathymetric maps have enabled the application of this method to become feasible for low-power and accurate navigation underwater.

Recently, we have tested and validated a TBN methodology to show that it can augment existing navigation methods to bound sensor drift and reduce error in an energy-efficient manner [1]. In this paper, the augmentation of TBN with *in-situ* physical water sampling using mathematical methods is investigated to create *terrain* maps which enable underwater vehicles to navigate and localize themselves relative to interesting water properties with high accuracy. Autonomous underwater vehicles (AUVs) need to navigate within a spatiotemporally dynamic environment and gather data of high scientific value. We incorporate the concept of Environmental or Ecological Niche Models to generate a map of a locale showing only physical and chemical parameters that have either been measured or interpolated from direct measurements [2]. Here, we assume that the environment is static in both space and time, however the spatiotemporal dynamics of observed ecological niches suggests that they exhibit periodicity or a predictable stochastic behavior, as in [3].

Bathymetric and physical water data were gathered on the surface of unique water bodies through multiple deployments of the vehicle. These deployments were performed in four different bodies of water: (i) Big Fisherman’s Cove, Santa Catalina Island (33°44’N 118°48’W), CA, USA (coastal ocean bay); (ii) McGill Bellairs Research Institute (13°11’31.2”N 59°38’27.6”W), Saint James, Barbados (coastal ocean coral reef); (iii) Rogers Reservoir, (37°17’28.2”N 107°50’45.3”W), Durango, CO, USA (small fresh water reservoir); and (iv) Lake Nighthorse (37°13’N 107°55’W), Durango, CO, USA (large fresh water lake). The vehicle navigated on the surface of the water to ground-truth measurements via GPS collecting data referenced to GPS locations.

The combination of the parameters Salinity, Temperature, pH, Turbidity, Chlorophyll, Blue-green algae and Dissolved oxygen with the associated weights provides the “*bumpiest*” scalar field (i.e. the scalar field with the most likelihood that a given trajectory across it is unique with respect to all others). To assess this characteristic, we propose a measure called *global correlation*.

For each physical water parameter, a matrix is generated using interpolation, where each element (i,j) corresponds to the coordinate (x,y) where the value was measured. Then Z-score is used as the normalization technique calculated by the equation $z = \frac{x - \mu}{\sigma}$, where μ is the mean and σ is the standard deviation of the matrix. We assume that the lower the spatial auto-correlation, the higher the *randomness* of the spatial field. Auto-correlation of each matrix is then calculated and its peak value is replaced by 0. The sum of the absolute values of the matrix is the global correlation value. We seek the appropriate parameters for each of the surveyed bodies of water using combinations of physical water parameters and bathymetric information to ensure that each and every spatial path through a water body is defined and unique. Then, we determine similarities among them and the set of coefficients that maximize their variability.



Figure 1: YSI EcoMapper Autonomous Underwater Vehicle executing a mission off the coast of Santa Catalina Island.

*Corresponding author {greis003,bobadilla}@fiu.edu

Let $\alpha = \{\alpha_1, \alpha_2, \dots, \alpha_n\}$, where $\alpha_i > 0$, $\sum_{i=1}^n \alpha_i = 1$ and n is the number of water parameters, be the set of coefficients that minimizes the spatial auto-correlation. A suitable *terrain* map computed from our proposed approach for navigation and localization is given by $S = \alpha_1 * var_1 + \alpha_2 * var_2 + \dots + \alpha_n * var_n$, where S represents a linear combination of the parameters considered. The set of coefficients is obtained using uniformly random sampling from unit simplex [4]. Over a random multinomial probability distribution, an array $X = \{x_1, \dots, x_{a-1}\}$ with unique entries from a uniformly random sampling is created with values varying among $\{1, 2, \dots, M-1\}$, where M is the maximum integer, without replacement. The first value is $x_0 = 0$ and the last is $x_a = M$. Array X is then sorted in ascending order. Let $Y = \{y_1, y_2, \dots, y_i, \dots, y_{M-1}\}$ with y_i being defined as $x_{i+1} - x_i, \forall i \in \{1, 2, \dots, a\}$. Each entry of array Y is then divided by the sum of all the values of Y so that the new sum is equal to 1.

Using the data from on-board sensors, a preliminary map is generated for use in later missions. Preliminary results using depth data in [5] showed that global correlation is lower, as this is desired, when physical water parameters are combined with bathymetric information instead of using either one independently. Turbidity, temperature and salinity are the most significant parameters in the ocean (at Big Fisherman’s Cove) when the aim is higher variability. Turbidity per se has 45% of significance: $S_{SantaCatalina} = 0.226828 * Salinity + 0.190777 * Temperature + 0.096279 * pH + 0.450075 * Turbidity + 0.00025 * Chlorophyll + 0.023924 * Blue - green_algae + 0.011867 * Dissolved_oxygen$ (Figures 2 and 3). For fresh water (at Rogers Reservoir), the critical parameters are different from the ones in the ocean. Blue-green algae was the most significant parameter for the fresh water, with 35.36% of importance: $S_{RogersReservoir} = 0.0342 * Salinity + 0.0567 * Temperature + 0.0086 * pH + 0.2247 * Turbidity + 0.2211 * Chlorophyll + 0.3536 * Blue - green_algae + 0.1011 * Dissolved_oxygen$ (Figures 4 and 5). In the full paper, we will show the weights for each parameter across the other bodies of water and similarities or correlations among them to ensure that the generated map contains the required variability for the navigational accuracy required for the deployment. The developed approach is an alternate way of targeting sample acquisition or navigating through space, and relaxes the dependence on geographic coordinates, enabling the design of methods for improving navigation and sampling within a dynamic feature.

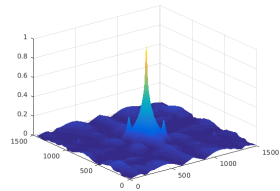


Figure 2: Autocorrelation for the physical water parameters at Big Fisherman’s Cove, Santa Catalina.

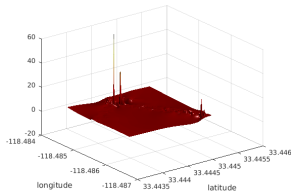


Figure 3: Final terrain map for the physical water parameters at Big Fisherman’s Cove, Santa Catalina.

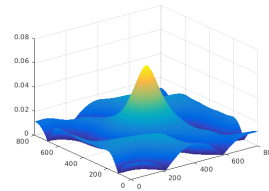


Figure 4: Autocorrelation for the physical water parameters at Rogers Reservoir, Durango.

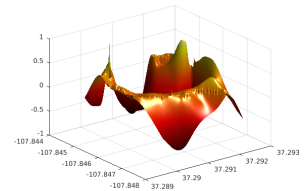


Figure 5: Final terrain map for the physical water parameters at Rogers Reservoir, Durango..

References

- [1] A. Stuntz, J. S. Kelly, and R. N. Smith, “Enabling Persistent Autonomy for Underwater Gliders with Ocean Model Predictions and Terrain-Based Navigation,” *Frontiers in Robotics and AI*, vol. 3, p. 23, apr 2016.
- [2] L. M. Robinson, J. Elith, A. J. Hobday, R. G. Pearson, B. E. Kendall, H. P. Possingham, and A. J. Richardson, “Pushing the limits in marine species distribution modelling: Lessons from the land present challenges and opportunities,” *Global Ecology and Biogeography*, vol. 20, no. 6, pp. 789–802, 2011.
- [3] K. Smith, S.-C. Hsiung, C. G. Lowe, and C. M. Clark, “Stochastic Modeling and Control for Tracking the Periodic Movement of Marine Animals via AUVs,” in *IEEE/RSJ International Conference on Intelligent Robots and Systems.*, (Daejeon, Korea), oct 2016.
- [4] N. A. Smith and R. W. Tromble, “Sampling uniformly from the unit simplex,” *Johns Hopkins University, Tech. Rep.*, vol. 29, 2004.
- [5] A. Stuntz, D. Liebel, and R. N. Smith, “Enabling persistent autonomy for underwater gliders through terrain based navigation,” in *OCEANS 2015 - Genova*, pp. 1–10, May 2015.