

Enabling Persistent Autonomy for Underwater Gliders Through Terrain Based Navigation

Andrew Stuntz, David Liebel and Ryan N. Smith

Department of Physics and Engineering, Fort Lewis College, Durango, CO 81301, USA

Corresponding Author Email: rsmith@fortlewis.edu

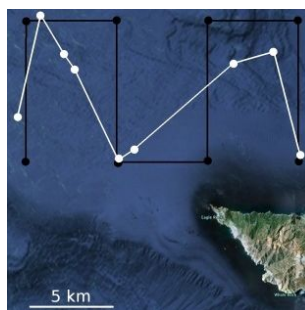
Abstract—To effectively examine ocean processes we must often sample over the duration of long (weeks to months) oscillation patterns. Such sampling requires persistent autonomous underwater vehicles, that have a similarly long deployment duration. Actively actuated (propeller-driven) underwater vehicles have proven effective in multiple sampling scenarios, however they have limited deployment endurance. The emergence of less actuated vehicles, i.e., underwater gliders, has enabled greater energy savings and thus increased endurance. Due to reduced actuation, these vehicles are more susceptible to external forces, e.g., ocean currents, causing them to have poor navigational and localization accuracy underwater. This is exacerbated in coastal regions, where current velocities are the same order of magnitude as the vehicle velocity.

In this paper, we examine a method of reducing navigation and localization error, not only for navigation, but more so for more accurately reconstructing the path that the glider traversed to contextualize the gathered data, with respect to the science question at hand. We present a set of algorithms for offline processing that accurately localizes the traversed path of an underwater glider over long-term, ocean deployments. The proposed method utilizes terrain-based navigation with only depth, altimeter and compass data compared to local bathymetry maps to provide accurate reconstructions of traversed paths in the ocean.

I. INTRODUCTION

Aquatic robots, such as Autonomous Underwater Vehicles (AUVs), and their supporting infrastructure play a major role in the collection of oceanographic data (e.g., [1], [2] and [3]). Autonomous underwater gliders provide one approach to observing ocean processes. Gliders are capable of long-term deployments, remaining out in the ocean for periods of time ranging from several weeks to several months [4]. Although their horizontal speeds are only about 1 km/hr, their longevity, coupled with the use of multiple gliders, can compensate by providing an extended temporal and spatial series of observations.

To assist with energy savings, most gliders do not employ highly-accurate (high-energy) navigation systems,



(a) Planned lawn-mower pattern (black waypoints and path) and the actual executed path (white surfacing locations and path) for a glider deployment off of the northern tip of Santa Catalina Island, CA.



(b) A CINAPS [5] Slocum glider preparing to start a mission off the Northeast coast of Santa Catalina Island, CA.

Fig. 1. 1(a) A sample of a poorly executed path. 1(b) The test-bed vehicle used in this study.

but rely on dead-reckoning with a modest Inertial Measurement Unit (IMU). Regardless of the specifications of the IMU, sensor drift is unbounded and navigational error monotonically increases with time. During routine deployments in a coastal ocean environment in Los Angeles, CA, it was found that typical underwater gliders experience roughly 650 m navigational error for each kilometer traveled [6], [7]. A combination of these factors can lead to poor experimental results. For example, Fig. 1(a) displays a planned path in black, and an actual execution of this planned path by a glider in white. This poses difficulties for reconstructing the actual traversed path of the vehicle for analysis of scientific data. Additionally, for operations in cluttered environments, or near shipping lanes, this error may put the vehicle at serious risk. With an Extended Kalman Filter and inertial dead reckoning augmented with ocean model predictions, the authors have shown that this error can be reduced to less than 500 m over a single kilometer of travel [6], [7]; this is still significant when trying to avoid a busy shipping lane. High-level planning can provide assurance that the vehicle will follow a prescribed trajectory [8],

however we are always faced with potential navigation error during planned plan execution.

Autonomous gliders can spend in excess of 8 hours dead-reckoning under water, navigating by only a compass, magnetometer and depth sensor. Frequent surfacing for position fixes limits the amount of data that are collected during a deployment by decreasing the total time underwater, and by expending excess energy for communication and localization while on the surface. Additionally, surfacing in potentially hazardous locations (e.g., shipping lanes) puts the vehicle at risk. Maximizing time underwater significantly reduces the ability of the vehicle to localize and accurately reconstructing subsurface glider trajectories can be difficult for long underwater transects. It is generally assumed that the traversed path of a glider is the straight line connecting the the dive and surface locations; a poor assumption the majority of the time.

Before the advent of satellite based navigation, e.g., GPS, long-distance navigation systems for missiles were developed for long-distance navigation [9]. Cruise missiles needed an accurate, long-term position estimate to guide them to their targets. Basically, data from an embedded altimeter is compared with the ground elevation that is given or predicted by a stored map. Accuracy is dependent on the resolution of the underlying topography map (very good for terrestrial locations) and the accuracy of the measured elevation. This system became redundant after the introduction of GPS, although it is still useful if satellite navigation is unavailable or a satellite connection is lost. Until recently, the utility of terrain-based navigation for underwater vehicles was low due to the poor resolution of bathymetric maps. Updated bathymetry maps beg revisiting the application of this method for low-power, accurate navigation underwater.

Areas of significant productivity in the coastal ocean are highly correlated to locations of significant bathymetric relief, e.g., algal blooms [10]-[14] and ocean fronts [15]-[17]. In these areas, every path traversed by an AUV has a depth signature that is highly variable, and becomes increasingly unique the longer the trajectory becomes. The specific deployment location and science motivation enhances the utility of terrain-based localization.

This paper examines the minimal set of data necessary to accurately localize a glider trajectory within a coastal region. The methodology is based on the fundamental concepts presented by traditional terrain-based navigation methods. We consider only the depth, altitude and initial compass heading from start to goal, and analyze the localization performance of our terrain-following algorithms. From an application point of view, terrain

based navigation for underwater vehicles is only limited by the altitude sensor, as it is required for the vehicle to *see the ground*. This is not a limiting factor for most coastal and shallow (< 400 m) operations.

The data are initially smoothed to reject sensor noise, and then compared to a local bathymetric map. The proposed algorithm segments the data and finds the best fit between each segment and the bathymetry within a prescribed sector of sight by use of a least squares optimization.

The proposed methodology has been tested with data from a deployment of a Slocum glider off the coast of California USA, and results are presented from this trial. Using collected data from the on-board pressure sensor and altimeter only, the location of the glider within the water column is computed, compared to known bathymetric maps, and possible localization fixes are generated. This enables a model of the glider path that is more accurate than the onboard IMU alone. This more accurate localization allows scientists to better contextualize the gathered measurements on a dynamic spatiotemporal scale. The following sections detail the proposed methodology for integrating this post processing technique into real-time operations.

II. RELATED WORK

Autonomous Underwater robotic platforms are set to revolutionize ocean sampling, promising less expensive and faster ocean sampling. The authors of [18] provide a thorough survey of underwater advances and challenges, and summarizing the recent advances on Terrain Based Navigation (TBN). The primary focus is on a lack of accurate maps as a shortcoming of TBN in the aquatic environment. Additionally, limitations in sensors, especially optical range sensors, limit TBN underwater. It is concluded that improving navigation will enable new missions for underwater vehicles that would have previously been considered impractical or infeasible [18]. Terrain based navigation has been around for many decades and was initially designed for use on long-range missiles prior to the development of a robust GPS satellite network [9]. Here, we apply a similar concept to data collected by an underwater glider.

IMU Error and its effect on navigation performance is explored in [19], which shows that even using tactile-grade IMU systems, error in the IMU is still too high to mitigate significant trajectory errors. Significant drift and error propagates through navigation estimates, regardless of the type of IMU employed [19]. Navigation is not reliable with the use of IMU data alone, especially when localization fixes are scarce and sensor drift cannot be bounded.

Lagadec has presented a simulation of terrain based navigation under ice [20], showing the feasibility of using a particle filter for TBN on long term glider navigation. He was able to utilize lower relief maps, with an accuracy of 2 km, in the arctic circle to navigate with reasonable accuracy; the particle filter converged with an accuracy in the 1000 m resolution. In one simulation the mean accuracy was over 8000 m. Though his study suggests that for a real deployment technological advances on gliders would have to be undertaken, this reduces the chances of his navigation system being implemented real time on field deployments. All of this points to utilizing current data from gliders which may be less accurate. It also requires utilizing higher relief bathymetric maps to provide a TBN system for autonomous underwater vehicles that can be implemented online in real time. The primary shortcoming of the technique presented in [20] was the lack of an accurate terrain map, which really is not a fault of the methodology. Here we base our method on recently updated, high-resolution bathymetry maps. Also, Lagadec's navigation system required the development of a motion model of the glider by simulating glider movements through ocean models. This motion model adds complexity to the method, and additionally bases a significant portion of the accuracy of the method on the accuracy of the ocean model and glider motion model.

Many other studies have implemented particle filters to develop TBN frameworks for underwater vehicles [21], [22], [23], [20]. Particle filters provide a seemingly good fit as a solution to the TBN problem by applying a stochastic approach, and understanding that the longer the path traversed, the more probable it is for a single solution to emerge. Again, filtering requires a basic motion model for the vehicle, weighting possible trajectories partially based on the dynamics achievable by the system. This has its limitations in the application to underwater gliders, as a significant portion of the glider motion is driven by ocean currents, which can be the same order of magnitude as the vehicle velocity. Hence, the accuracy of the glider model depends heavily on the ability to predict ocean currents. This can pose problems in a dynamic environment like the coastal ocean. The proposed method is developed as a model-free approach to the TBN problem, only using the gathered water depth data and the initial heading to the next prescribed waypoint. This approach is deterministic in nature, but does not rely on a vehicle or ocean model.

There are no methods that currently focus on only gathered science data without use of a motion model to reconstruct glider paths, or real time navigation. This

paper presents an application of TBN that focuses on utilizing minimal amounts of collected data that could be implemented on gliders for real-time navigation. Utilizing only the initial glider position, desired heading, and continuous altitude and depth measurement, a TBN solution is presented. We initially propose a method that focuses on an offline algorithm to reconstruct paths and provide insight on how to develop this into a computationally minimal, real-time, online algorithm.

III. BACKGROUND

A. Autonomous Underwater Gliders

The vehicle for this study is a Webb Slocum autonomous underwater glider [24] as seen in Fig. 1(b). A Slocum glider is a 1.5 m (length) by 21.3 cm (diameter), torpedo-shaped vehicle designed for long-term (~ 1 month) ocean sampling and monitoring [25], [26]. These vehicles *fly* through the water driven entirely by a variable buoyancy system. Wings convert the buoyancy-dependent vertical motion into forward velocity. Inflection points occur at depths and altitudes set in the user-defined mission plan. Thus, the glider navigates by dead-reckoning between waypoints with a sequence of dives and climbs, forming a vertical sawtooth pattern.

Gliderers are utilized for their deployment endurance, as they provide an optimal method for generating high-resolution spatial and temporal data with minimal energy expense. Sophisticated and power-hungry navigational instruments are not common due to the reduction in deployment duration resulting from their increased power consumption. For similar reasons, on-board decision making and computation are generally not performed. A Slocum glider includes a GPS receiver for localization at each surfacing. For subsurface, dead-reckoning navigation, the vehicle relies on a PNI TCM2 attitude sensor and a SBE 41/41CP pressure sensor. The TCM2 incorporates an electronic compass, a three-axis magnetometer and a two-axis tilt sensor, and is able to provide attitude data at a user-selectable rate of 1 to 30 Hz; heading accuracy is ± 1 degrees RMS, and roll/pitch accuracy is approximately ± 0.2 degrees RMS. The SBE sensor measures pressure with an RMS accuracy of 2 decibars, or depth with an RMS accuracy of 2.03 meters near the water surface, at a rate of 1 Hz.

Given their persistence, the data gathered by gliders are important for understanding physical forcing components acting on a regional scale and determining long-term variability [5], [4]. For such applications, we seek techniques to accurately reconstruct and localize the data that are gathered for proper assessment by ocean

scientists. Along these lines, methods to increase navigational accuracy of autonomous gliders by use of ocean model predictions have been studied by the authors [27], [6]. These works motivated further research in high-level planning methods to increase the repeatability and reconstructability of executed glider paths.

During a deployment, a Slocum glider navigates by the following method: when navigating to a new waypoint, the present location L of the vehicle is compared to the next prescribed waypoint in the mission file (W_i), and a bearing and range are computed for execution of the next segment of the mission. The geographical location at the extent of the computed bearing and range from L is the aiming point A_i . The vehicle dead-reckons with the computed bearing and range towards A_i , with the intent of surfacing at W_i . The computed bearing is not altered, and the glider must surface to make any corrections or modifications to its dive plan. When the glider determines that it has traveled the requested range at the specified bearing (based on speed over ground estimation from the previous dive), it surfaces and acquires a GPS fix. If the vehicle surfaces within a given range of W_i , the waypoint is determined to be *achieved*. Positional error between the actual surfacing location and W_i is computed, and is fully attributed to environmental disturbances, i.e., ocean currents. A depth-averaged current vector is computed, and this is factored in when computing the range and bearing to W_{i+1} . Hence, A_i is in general not in the same physical location as W_i , and rarely does the glider ever surface at W_i .

B. Dead Reckoning Error Estimation

Based on the results of initial tests presented in [5], we are motivated to further investigate the improvement of navigational capabilities of gliders by use of TBN. Since a glider depends solely upon dead reckoning for subsurface navigation, the uncertainty in the estimated state will grow without bound. For our applications in the coastal regions of Southern California, we generally require the vehicle to surface frequently (every 3 – 6 hours), see e.g., [5], [27], [28]. Since we acquire GPS ground truth relatively frequently, we are able to bound the growth of the state estimation error. This provides a baseline expected error for the assessment of navigational accuracy and precision. In this paper, we are interested in better localization while underwater between waypoints to enable more accurate reconstructions of executed trajectories.

In addition to the GPS receiver, a typical glider carries a PNI TCM2 attitude sensor and a SBE 41CP pressure

sensor on-board. The TCM2 incorporates an electronic compass, a three-axis magnetometer and a two-axis tilt sensor, and is able to provide attitude data at a user-selectable rate of 1 to 30 Hz; heading accuracy is $\pm 1^\circ$ RMS, and roll/pitch accuracy is approximately $\pm 0.2^\circ$ RMS. The SBE measures pressure with an RMS accuracy of 2 decibars, or depth with an RMS accuracy of 2.03 m near the water surface, at a rate of 1 Hz. Together, the TCM2 and the SBE 41CP are the only available sources of navigation information when the glider is submerged. In [6], [7], we examined the integration of ocean model predictions with dead-reckoning navigation to improve localization for underwater gliders. Here, we examine the utility of depth and altitude measurements to further increase the accuracy reported in [6], [7].

IV. PROBLEM DESCRIPTION AND SETUP

In this paper, we examine a deployment of a Slocum glider in Monterey Bay, CA USA to develop a TBN methodology based on only water depth data to better reconstruct executed trajectories offline for science analysis. Commonly, glider trajectories are represented as straight lines underwater by connecting adjacent surfacing locations. The fact is that glider motion is hardly a straight line, as they are continually moved underwater by ocean currents and continual correction with poor navigation systems. The proposed method will provide a better trajectory reconstruction, enabling a more clear understanding and contextualization of the data that these vehicles collect.

The depth data are initially smoothed to reject sensor noise, and then compared to a local bathymetric map. The proposed algorithm segments the data and finds the best fit between each segment using a linear least squares estimation. The depth is compared with populated trajectories of the depth data. The presented method is developed to be motion model free and utilizes a minimal amount of data, with the goal to implement the algorithm real time.

Hundreds of glider missions have been successfully completed off the California coast over the last few years by the University of Southern California CINAPS team [5]. We utilize data gathered during some of these deployments for an initial development and examination of our approach.

For this initial examination, we focus on a glider deployment in Monterey Bay, CA USA executed during the Monterey Bay Aquarium Research Institute CANON experiments in October 2010 [29]. Figure 2 shows the entire bay, with the area in question highlighted. The deployment region is focused on the northern shelf in

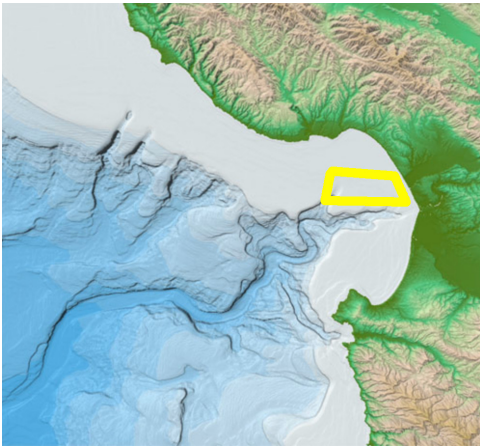


Fig. 2. Bathymetric relief of Monterey Bay, CA. Significant relief from the Monterey Canyon provides interesting ocean science to study and ample depth features for matching with a terrain-based navigation system.

Monterey Bay, referred to as the algal bloom incubator. The terrain in this region is varied and the bathymetry maps are high-resolution.

A. Glider Deployment

The Glider He Ha Pe [5] was deployed in Monterey Bay in October of 2010. Its start position was $(36.8431, -121.9204)$ and it was headed for $(36.8097, -121.9041)$. The actual final surfacing location was $(36.8415, -121.8694)$. The vehicle traveled a straight line distance of approximately 4.5377 km from its initial position to its ending position. The deployment can be seen in figure 3, as one of the many missions run over multiple deployments in Monterey Bay, see Fig. 4. Given the drastic difference in prescribed surfacing location and actual surfacing location, this mission is an excellent candidate for demonstrating our method. The Glider He Ha Pe started at the yellow pin in Fig. 3. The glider surfaced at the green pin in Fig. 3. Note that the glider surfaced at the location that it *thought* was the prescribed waypoint. Thus, we see a navigational error in the onboard INS of approximately 4,688 m.

B. Bathymetric Data Information

In recent years, higher resolution bathymetry maps have been published for the coast of California. The publicly available Southern California Coastal Ocean Observing System (SCCOOS) maps provide 30 arc second grid resolution [30]. An example of the map is shown in Fig. 5, showing an area in Monterey Bay. Since 2009, the USC CINAPS group [5] has conducted a significant number of deployments of Slocum gliders

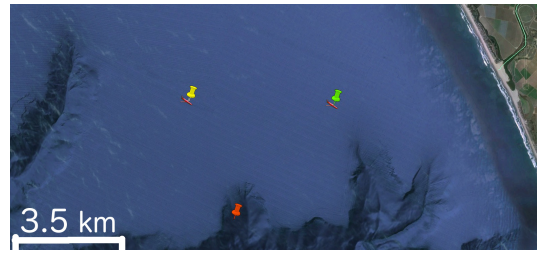


Fig. 3. The start position and end position are the yellow and green pins on the map, respectively. The goal position of the glider is the red pin on the map. The straight line (inaccurate) path of the glider is assumed to connect the yellow pin and the green pin. Image courtesy of Google Earth.



Fig. 4. Surfacing locations for multiple glider deployments executed within Monterey Bay, CA. Image courtesy of Google Earth

in Monterey Bay, CA. For example, Fig. 3 shows the surfacing locations of more than 40 missions during just 2011. The data is accurate to grids of $.0008^\circ$ of latitude and longitude. The bathymetric data is an ASCII XYZ data file that is easily utilized in MatLab.

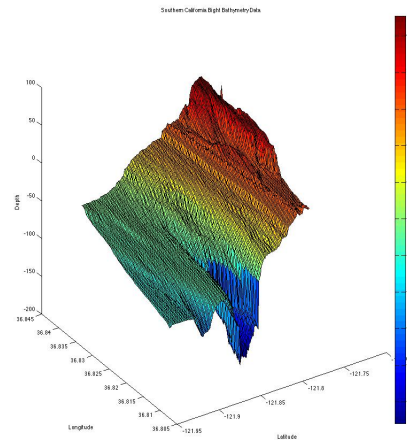


Fig. 5. Bathymetry data mapped and shaded, showing detail of the SCCOOS data in Monterey Bay. Maps are accurate to $.0008^\circ$ in both latitude and longitude.

C. Methodology

To begin, we selected one glider mission that was executed on 20 October 2010. The initial starting location was (36.84311, -121.9204) and the prescribed waypoint was (36.8097, -121.9041). The actual final surfacing location was (36.8415, -121.8694). The vehicle traveled a straight line distance of approximately 4.5377 km from its initial position to its ending position. The dead-reckoning error in navigation for this mission is 4,688 m. The vehicle was supposed to traverse a path that covered a region of significant vertical relief, however the vehicle actually remained in a region of minimal relief. The glider was supposed to traverse a path with a vertical drop of 9.272% if it had reached its prescribed goal. The glider actually traversed an area with a depth relief of less than 0.4% with raw, recorded depth data showing a relief of approximately 1.7%.

D. Algorithm Design

In this section, we present an algorithm to match gathered water depth data to a bathymetry map. We propose a least-squares optimization method for determining the path traversed by the glider based on gathered depth data.

The Least Squares Error-Terrain Based Navigation (LSE/TBN) algorithm is presented in Algorithm 1 to solve the posed TBN problem. The LSE/TBN Algorithm takes as input the start location, heading to proposed ending location, and gathered vehicle depth and altitude data. The LSE/TBN Algorithm outputs a new Latitude and Longitude and then starts over again until the algorithm has used the entire depth data set.

The start and proposed end locations are known for each glider mission. A GPS position is obtained when surfacing. Distances between coordinate values are calculated using the Haversine Formula [31] using equation 1c. providing a simple calculation to find the great-circle distance, the shortest distance between two points on the surface of a sphere. The Haversine formula requires ϕ and λ to be converted to radians. ϕ_1 and ϕ_2 are the start and end Latitudes. λ_1 and λ_2 are start and end Longitudes. R is the radius of the sphere, in this case the mean radius of the earth, 6,371,000 m.

$$a = \text{havrsin}(\phi_2 - \phi_1) + \cos(\phi_1) \cos(\phi_2) \text{havrsin}(\lambda_2 - \lambda_1) \quad (1a)$$

$$c = \text{atan2}(\sqrt{a}, \sqrt{1-a}) \quad (1b)$$

$$d = R \times c \quad (1c)$$

The bathymetry data within the surrounding start region are interpolated to .0001°. An example of the

Algorithm 1: LSE/TBN Algorithm

```

TotalDistance ← Distance between Start Latitude
and Longitude and Ending Latitude and Longitude
while  $i \leq$  TotalDistance do
  Discretize bathymetry data
   $xc \leftarrow$  find closest grid value to Starting Longitude
   $yc \leftarrow$  find closest grid value to Starting Latitude
  DP ← distance to closest edge of grid
  for  $n \leq -90 +$  Starting Direction  $+ 90$  do
     $T(n) \leftarrow$  Generate Paths around starting location
    D1 ← Distance traveled in step
    Points ← Depth data based on length of D1
     $T_w(n) \leftarrow$  Weight the paths based on trajectory
  end for
  while  $n \leq$  length( $P_o$ ) do
     $R^2 \leftarrow (T(n) - \text{Points})^2$ 
     $P_o(n) = T_{wi}(n) \times W_T + R^2(n) \times W_R$ 
    P ← min( $P_o$ )
     $n \leftarrow n+1$ 
  end while
  Start Latitude ← Latitude at end of P
  Start Longitude ← Longitude at end of P
   $i \leftarrow i + D1$ 
end while

```

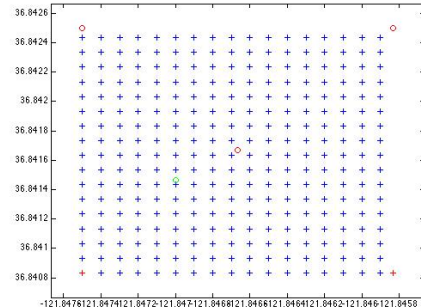
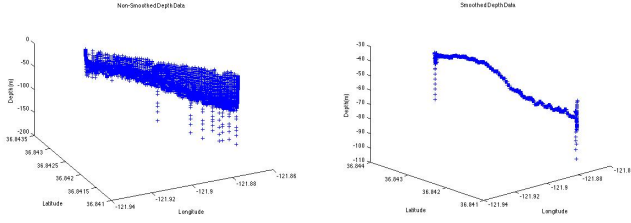


Fig. 6. A linearly interpolated bathymetry map of the area of interest in Monterey Bay, CA. Grid lines are separated by .0001°

bathymetry data can be seen in Fig. 6. The glider velocity is estimated to be 22 cm/s, a reasonable velocity estimated from data over multiple deployments in the region. Given this velocity estimate, the distance between data points is taken to be 22 cm.

Depth Data are smoothed over time to handle sensor noise and hysteresis. Some of the error is a result of the fixed angle of the altimeter, causing altitude measurements to be inaccurate during the ascent portion of the yo-yo trajectory path that gliders execute. The original and smoothed data are presented in Fig. 7. Though a



(a) Original data taken from the pressure sensor and altimeter, merged together to give total water depth. (b) Water depth data after smoothing.

Fig. 7. A comparison of the smoothed data in figure 7(b) and the nonsmoothed data in figure 7(a).

clear line can be seen in the data, it is too noisy to reliably use in the proposed LSE/TBN Algorithm. These data were smoothed using a standard deviation rejection algorithm[32]. As seen in Fig. 7(b), a more clear line is visible and resulting in more reliable application of the proposed algorithm. A simple way to solve this problem in real time would be to eliminate the data as the glider was rising and the sensor was not pointed in the correct direction. This would break the deployment into multiple segments (dive segments) that could be pieced together to reconstruct the actual path, while allowing for computation time during path execution.

Path options are generated by sweeping the area around the starting location to generate 180 different path options, generating one path option for every compass degree from -90° of the expected direction to $+90^\circ$ of the expected direction. Equations 2a-4b describe how this is done. First, the point (x, y) is sent to the origin (x_o, y_o) .

$$x_o = |x - startlong| \quad (2a)$$

$$y_o = |y - startlat| \quad (2b)$$

Then, using a rotation formula the points are rotated about (x', y') .

$$xa = \cos(\theta) \times x_o + \sin(\theta) \times y_o \quad (3a)$$

$$ya = -\sin(\theta) \times x_o + \cos(\theta) \times y_o; \quad (3b)$$

Each point is then sent back to the original point by adding it to the original point (x, y) .

$$x' = xa + startlong \quad (4a)$$

$$y' = ya + startlat \quad (4b)$$

The length of the rotated segment is chosen by picking the closest point of the bathymetric grid to the $startlat$ and $startlong$. This keeps the step size lengths between $.0001^\circ$ and $.0008^\circ$, which is less than or equal to the

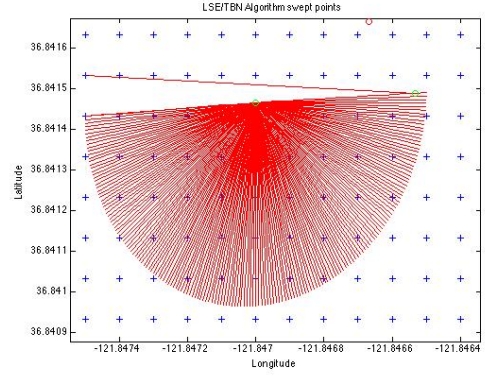


Fig. 8. Path options generated around the start Latitude and Longitude. 180 path options are shown in red.

resolution of the SCCOOS bathymetric maps for each step. The expected direction to initialize the iterative algorithm is taken to be the azimuth from the projected trajectory. An example of the generated path options can be seen in Fig. 8

Each path segment length is computed using the Haversine formula, Eq. 1c. Using this length, the average glider speed and sampling rate, we determine the number of data points (DP) within the segment as shown in Eq 5.

$$DP = \text{Velocity} \times \text{Distance Moved} \quad (5)$$

A linear least-squares approximation is used to compute the error for each path segment between the measured water depth values and an interpolated bathymetric map. The linear least-squares method solves an over determined system by minimizing the error of the data points to a given line, $f(x) = m \times x + b$, see Eq 6.

$$R^2 = \sum_{i=1}^n [y_i - f(x_1, x_2, x_3 \dots x_n)]^2 \quad (6)$$

The R^2 values are normalized between 0 and 1 to provide a weighting for each path segment.

Given the prescribed trajectory we additionally assign a weight to each path segment based on how close the azimuth is to the initially prescribed trajectory. Assume that the prescribed trajectory has an azimuth of 92° from the starting point to the goal location. The computed path segments range in azimuth value from 1° to -1° . We assign the preferred direction a value of 90^2 , and decrease as the segments diverge away from this direction. Thus, an azimuth of 92 would have a weight of 90^2 , an azimuth of 91 or 93 would have a weighting of 89^2 , an azimuth of 2 would have a weighting of 1^2 , etc. The path segments at each epoch are then weighted using the

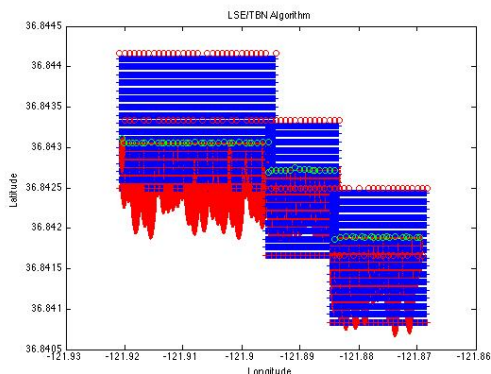


Fig. 9. The results of running the LSE/TBN algorithm, showing every iteration from the start position to its predicted ending position.

weighting function T_w shown in Eq. 8.

$$T_{wi} = 1 - [(T_{wi} - \min(T_w)) / (\max(T_w) - \min(T_w))] \quad (7)$$

Since T_w is maximized about the trajectory it is normalized between 0 and 1, then subtracted from one to get a minimization criterion.

Finally, a path segment is chosen based on the cost function shown in Eq. 8. The parameter α is initially set to 0.5 and seeds the algorithm. Altering α allows for emphasizing a preferred direction in regions of minimal bathymetric relief; multiple path segments have identical R^2 values from the least-squares optimization.

$$P_o = T_{wi} \times \alpha + R^2 \times (1 - \alpha) \quad (8)$$

Since both T_{wi} and R^2 are normalized between zero and one the weighting factors also stay between zero and one so that neither T_{wi} or R^2 dominate.

The algorithm then initializes the end of the chosen path segment as the new start point and the process repeats itself until it has utilized all of the depth data.

V. RESULTS

Applying the LSE/TBN Algorithm to the chosen trajectory in Monterey Bay, CA, we see a difference between the predicted surfacing location and the actual surfacing location of 55 m. This is the total navigation error over the entire 4.54 km trajectory. The algorithm utilized a weighting factor (α) of 0.5. Figure 10 shows the path computed by the LSE/TBN Algorithm. For this path, the LSE/TBN Algorithm iterated 69 times. These iterations can be seen in Fig. 9, from the start to the end point. The predicted path is laid over the bathymetry map and presented in Fig. 10. Here, we show the actual ending point, predicted ending point, and initial goal. The path followed rises approximately 20 m over a length of 4565.7 m. This is an overall depth

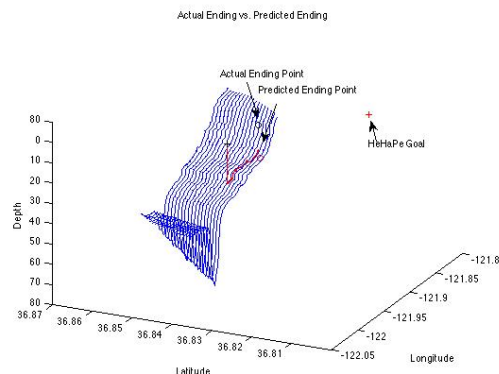


Fig. 10. Final results comparing the predicted ending point and the actual ending point. The prescribed goal location is also plotted, demonstrating the more than 4000m dead-reckoning error.

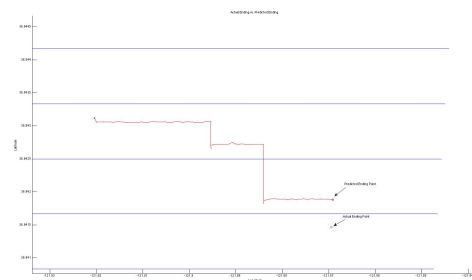


Fig. 11. The path on top of the bathymetry data. Showing the progression of the path as it nears the its final predicted point.

relief of approximately less than 0.5%. The distance actually traveled was 4537 m, a difference of 29 m (0.6% error) from the predicted distance traveled. The distance between the actual surfacing location and the predicted surfacing location was 55 m. Some of this error may be attributed to drift of the glider as it sits on the surface waiting for a GPS fix. A top-down view of the computed trajectory is presented in Fig. 11. It is not a straight line path between the two points, adjusting itself towards the end point as it nears the predicted ending point.

VI. CONCLUSIONS

The methods presented here demonstrate that accurate localization of a trajectory traversed by an underwater vehicle is possible using only the water depth correlated to local bathymetry maps.

Straight path estimations of gliders are currently used but provide inaccurate location while the glider is underwater and out of GPS contact. The LSE/TBN Path Estimation algorithm was developed to compare the depth data of an AUV to the bathymetric data of the area it was traveling, providing a better approximation

of the location over time.

The LSE/TBN Path Estimation algorithm provides a real time path estimator that provides a better estimation of the route the glider took during a deployment. This better path estimation can provide a better understanding of the position of the glider for scientists that utilize the instruments on the glider. An autonomous underwater vehicles path was analyzed to prove results of the algorithm with an error of 55 m compared to the final location of the glider. This compares to an error of 4688 m for the on-board INS. The path followed rises approximately 20 m over a length of 4565.7 m. This is an overall depth relief of approximately less than 0.5%. The distance actually traveled was 4537 m, a difference of 29 m (0.6% error) from the predicted distance traveled.

This paper shows the feasibility of terrain based navigation for glider deployments with bathymetric maps of reasonable relief. Results are promising for utilizing only the depth data, start and ending location, and predicted heading for reconstructing the path of underwater vehicles.

VII. FUTURE WORK

In this paper we presented an offline technique for localizing autonomous glider paths using only collected water depth data. Initial next steps will be to examine the trade-off of accuracy and computation time as we include more sensor data. We will first consider data from the TMC2 attitude sensor, and then extend to incorporating data from a 9-axis accelerometer and possibly a Doppler Velocity Logger (DVL). Note that the majority of glider operations do not utilize an accelerometer or DVL.

Further research includes examining multiple other glider trajectories from USC CINAPS [5] to assess algorithm sensitivity, and formalizing and proving the proposed methodology for other AUVs, specifically propeller-driven vehicles such as the YSI EcoMapper AUV [33]. The majority of deployments of these vehicles are much shorter than that of the gliders, and will provide a good case study for a lower bound on the applicability of our methods. Also, the EcoMapper vehicle for which we have data includes a 10-beam DVL, which can provide accurate ground truth to further benchmark the proposed method. The proposed terrain based navigation method is a complement to other localization systems present for any vehicle. We see this as augmenting existing systems, as well as bounding the inherent errors of other navigation systems, i.e., filtering methods.

It has been shown that real-time glider navigation accuracy can be increased through the incorporation of ocean model predictions and an Unscented Kalman

Filter (UKF) [6], [7]. However, even in this case, the uncertainty grows without bound. In a first step to implement our method in a real-time scenario, we will utilize it as a means to bound the uncertainty in the UKF. We can implement our method online by post-processing all gathered data and comparing to a known bathymetry map, which will give an accurate position estimate for the UKF to compare with at each update epoch. We will plan to implement this hybrid system onto a glider during field trials to see if the method improves dead reckoning in situ. Given the existing research presented earlier on the use of particle filters for TBN for underwater vehicles, we plan to develop a particle filter method for integration within the existing ocean model and UKF framework. This will hopefully provide an online set of navigation tools for accurate localization for underwater vehicles that operate for long duration missions.

Note that the presented method is virtually model free, relying only on the vehicle speed for matching measured water depth values with bathymetric maps. In general, the exact vehicle velocity is not known, but approximated and well-bounded. We propose to extend the current method by iterating through reasonable velocities and optimizing over potential trajectory options to determine the best match with gathered data. This will also provide information on the actual speed of the vehicle that can be used in other analyses.

As eluded to earlier, many AUV deployments are routine missions carried out in bounded and known locations. We propose to utilize this prior knowledge to improve localization in uncertain environments by updating existing bathymetric maps. Amassing depth data over a deployment region will significantly improve localization for future missions. SCCOOS and the University of Southern California have amassed a large amount of depth data off the coast of Central and Southern California. By combining data of previous missions, better bathymetric maps can be developed and utilized in a TBN framework to augment navigation methods utilized on many vehicles.

VIII. ACKNOWLEDGMENTS

A. Stuntz and D. Liebel were supported in part by a Fort Lewis College undergraduate research grant. Travel was supported for A. Stuntz through the Student Poster Competition travel subsidy. R.N. Smith was supported in part by a Byron Dare Junior Faculty Award.

REFERENCES

- [1] M. A. Godin, J. G. Bellingham, K. Rajan, Y. Chao, and N. E. Leonard, "A collaborative portal for ocean observatory control," in *Proceedings of the Marine Technology Society / Institute*

- of *Electrical and Electronics Engineers Oceans Conference*, (Boston, MA), 2006.
- [2] D. Paley, F. Zhang, and N. Leonard, "Cooperative control for ocean sampling: The glider coordinated control system," *IEEE Transactions on Control Systems Technology*, vol. 16, pp. 735–744, July 2008.
 - [3] L. Whitcomb, D. Yoerger, H. Singh, and J. Howland, "Advances in underwater robot vehicles for deep ocean exploration: Navigation, control, and survey operations," in *Proceedings of the Ninth International Symposium of Robotics Research*, (Snowbird, UT), pp. 439–448, Springer-Verlag, 1999.
 - [4] R. E. Davis, M. Ohman, D. Rudnick, J. Sherman, and B. Hodges, "Glider surveillance of physics and biology in the southern california current system," *Limnol. Oceanogr.*, vol. 53, no. 2, pp. 2151–2168, 2008.
 - [5] R. N. Smith, J. Das, H. Heidarsson, A. Pereira, I. Cetinić, L. Darjany, M. Ève Garneau, M. D. Howard, C. Oberg, M. Ragan, A. Schnetzer, E. Seubert, E. C. Smith, B. A. Stauffer, G. Toro-Farmer, D. A. Caron, B. H. Jones, and G. S. Sukhatme, "USC CINAPS builds bridges: Observing and monitoring the Southern California Bight," *IEEE Robotics and Automation Magazine, Special Issue on Marine Robotics Systems*, vol. 17, pp. 20–30, March 2010.
 - [6] R. N. Smith, J. Kelly, Y. Chao, B. H. Jones, and G. S. Sukhatme, "Towards improvement of autonomous glider navigation accuracy through the use of regional ocean models," in *Proceedings of the 29th International Conference on Offshore Mechanics and Arctic Engineering*, (Shanghai, China), pp. 597–606, June 2010.
 - [7] R. N. Smith, J. Kelly, and G. S. Sukhatme, "Towards improving mission execution for autonomous gliders with an ocean model and kalman filter," *2012 IEEE International Conference on Robotics and Automation*, pp. 4870–4877, May 2012.
 - [8] A. A. Pereira, J. Binney, G. A. Hollinger, and G. S. Sukhatme, "Risk-aware Path Planning for Autonomous Underwater Vehicles using Predictive Ocean Models," *Journal of Field Robotics*, vol. 30, pp. 741–762, Sept. 2013.
 - [9] J. P. Golden, "Terrain contour matching (tercom): a cruise missile guidance aid," in *24th Annual Technical Symposium*, pp. 10–18, International Society for Optics and Photonics, 1980.
 - [10] E. Sekula-Wood, A. Schnetzer, C. R. Benitez-Nelson, C. Anderson, W. Berelson, M. Brzezinski, J. Burns, D. A. Caron, I. Cetinic, J. Ferry, E. Fitzpatrick, B. Jones, P. E. Miller, S. L. Morton, R. Schaffner, D. Siegel, and R. Thunell, "The Toxin Express: Rapid downward transport of the neurotoxin domoic acid in coastal waters," *Nature Geosciences*, vol. 2, no. 4, pp. 273–275, 2009.
 - [11] K. Fulton-Bennett, "Canyons, currents, and algal blooms - How Monterey Canyon influences the growth of microscopic marine algae," Apr. 2005.
 - [12] R. A. Horner, D. L. Garrison, and F. Gerald, "Harmful algal blooms and red tide problems on the U.S. west coast," *Limnology and Oceanography*, vol. 42, pp. 1076–1088, July 1997.
 - [13] D. M. Anderson, P. M. Glibert, and J. M. Burkholder, "Harmful Algal Blooms and Eutrophication: Nutrient Sources, Composition, and Consequences," *Estuaries*, vol. 25, pp. 704–726, Aug. 2002.
 - [14] R. Kudela, G. Pitcher, T. Probyn, F. Figueiras, T. Moita, and V. Trainer, "Harmful Algal Blooms in coastal upwelling systems," *Oceanography*, vol. 18(2), pp. 184–197, 2005.
 - [15] A. M. Mancho, E. Hernández-García, D. Small, S. Wiggins, and V. Fernández, "Lagrangian Transport through an Ocean Front in the Northwestern Mediterranean Sea," *Journal of Physical Oceanography*, vol. 38, pp. 1222–1237, June 2008.
 - [16] R. Ferrari, "Ocean science. A frontal challenge for climate models.," *Science (New York, N.Y.)*, vol. 332, pp. 316–7, Apr. 2011.
 - [17] Y. Zhang, J. G. Bellingham, J. P. Ryan, B. Kieft, and M. J. Stanway, "Two-dimensional mapping and tracking of a coastal upwelling front by an autonomous underwater vehicle," in *MTS/IEEE Oceans - San Diego*, pp. 1–4, Sept. 2013.
 - [18] J. C. Kinsey, R. M. Eustice, and L. L. Whitcomb, "A survey of underwater vehicle navigation: Recent advances and new challenges," in *IFAC Conference of Manoeuvring and Control of Marine Craft*, 2006.
 - [19] W. Flenniken, J. Wall, and D. Bevly, "Characterization of various imu error sources and the effect on navigation performance," in *ION GNSS*, pp. 967–978, 2005.
 - [20] J. Lagadec, "Terrain Based Navigation using a Particle Filter for Long range glider missions - Feasibility study and simulations," Master's thesis, 2010.
 - [21] K. B. Anonsen and O. Hallingstad, "Sigma point kalman filter for underwater terrain-based navigation," in *Proceedings of the IFAC conference on control applications in marine systems*, pp. 106–110, 2007.
 - [22] K. B. Anonsen and O. Hallingstad, "Terrain aided underwater navigation using point mass and particle filters," in *Proceedings of the IEEE/ION Position Location and Navigation Symposium*, 2006.
 - [23] F. Gustafsson, F. Gunnarsson, N. Bergman, U. Forssell, J. Jansson, R. Karlsson, and P.-J. Nordlund, "Particle filters for positioning, navigation, and tracking," *Signal Processing, IEEE Transactions on*, vol. 50, no. 2, pp. 425–437, 2002.
 - [24] Webb Research Corporation. <http://www.webbresearch.com/slocum.htm>, 2008. viewed March 2011.
 - [25] O. Schofield, J. Kohut, D. Aragon, E. Creed, J. Graver, C. Haldman, J. Kerfoot, H. Roarty, C. Jones, D. Webb, and S. Glenn, "Slocum gliders: Robust and ready," *Journal of Field Robotics*, vol. 24, no. 6, pp. 473–485, 2007.
 - [26] G. Griffiths, C. Jones, J. Ferguson, and N. Bose, "Undersea gliders," *Journal of Ocean Technology*, vol. 2, no. 2, pp. 64–75, 2007.
 - [27] R. N. Smith, Y. Chao, P. P. Li, D. A. Caron, B. H. Jones, and G. S. Sukhatme, "Planning and implementing trajectories for autonomous underwater vehicles to track evolving ocean processes based on predictions from a regional ocean model," *International Journal of Robotics Research*, vol. 29, pp. 1475–1497, October 2010.
 - [28] R. N. Smith, M. Schwager, S. L. Smith, B. H. Jones, D. Rus, and G. S. Sukhatme, "Persistent ocean monitoring with underwater gliders: Adapting sampling resolution," *Journal of Field Robotics*, vol. 28, pp. 714 – 741, September/October 2011.
 - [29] F. Chavez, "{CANON}: {C}ontrolled, {A}gile, and {N}ovel {O}bserving {N}etwork," Aug. 2010.
 - [30] SCCOOS, "{SCCOOS} {S}outhern {C}alifornia {C}oastal {O}bserving {S}ystem." \url{http://www.sccoos.org}, 2009.
 - [31] B. Shumaker and R. Sinnott, "Astronomical computing: 1. computing under the open sky. 2. virtues of the haversine.," *Sky and telescope*, vol. 68, pp. 158–159, 1984.
 - [32] J. R. Taylor, "An introduction to error analysis: The study of uncertainties in physical measurements," pp. 166–168, 1996.
 - [33] YSI Incorporated, "YSI EcoMapper." \url{http://www.ysi.com/productsdetail.php?EcoMapper-41}, 2010.