

# Development and Implementation of a Marine Robotics Algorithm Validation Testbed

Jacob Anderson, Brandon Belcher, Kathrine Clark, Jake Faust, Erik Hall,  
Joseph Sandoval, Kenneth Tozer and Ryan N. Smith<sup>†</sup>

**Abstract**—Clean water is a natural resource that is crucial for life but has very little protection. This was exemplified by the Gold King Mine spill on August 7, 2015, in which three million gallons of acidic mine drainage was released into the head waters of the Animas River. The Animas River is the source for five water supply systems, providing drinking water for tens of thousands of people and irrigation water for a myriad of agricultural operations. Incidents such as this happen regularly and create the need for persistent monitoring of the water in rivers, lakes and reservoirs world wide. To this end, this paper presents the development of a network of three autonomous surface vehicles equipped with water monitoring sensors for water quality monitoring and an algorithm validation testbed. These vehicles are sustained by solar power and equipped with 3G wireless communication for real-time data transmission. Here, we detail the vehicles and the networked system, and provide results from field deployments.

An additional outcome of this project is the engagement and collaboration with the local community and the robotic community at large. By making the database view-able to the public the local community can be involved in evaluating the quality of their water. By allowing the public to plan paths for the vehicles, multi-robot sampling algorithms and crowd-sourced control techniques can be methodically developed and systematically analyzed.

## I. INTRODUCTION

On August 7, 2015 the Environmental Protection Agency accidentally released three million gallons of acidic mine drainage into Cement Creek near Silverton, Colorado. As a tributary to the Animas River, the heavy metal-laden spill turned the Animas river a putrid, orange color that made its way south through Durango, Farmington, the Navajo Nation and into its final resting place in Lake Powell. This catastrophe resulted in a community, state, and world-wide alarm, and realization that water is a precious and vulnerable resource that can easily be contaminated. Contaminated water has the potential to be hazardous to human-health and the environment, and can have a persistent legacy for many generations. The spill caused a community-wide concern and response to monitor the quality and quantity of the City of Durango's (COD) drinking water. Water

Authors are associated with the Robotic GNOME Laboratory, Department of Physics and Engineering, Fort Lewis College, Durango, CO 81301, USA

<sup>†</sup>Corresponding author.



Fig. 1. Rogers Reservoir in Durango, CO. Location of the networked system of ASVs for persistent monitoring.

from the Florida and Animas Rivers is discharged into Rogers Reservoir and undergoes further water treatment to provide safe drinking water to the COD. Currently, this is the only system in Durango for providing safe drinking water. Fortunately for this catastrophe, the COD was able to prevent contaminated water from entering Rogers Reservoir. This was not the case for other communities down river from Durango. Future incidents may not have the visual marker(s) or the prior warning as the Gold King Mine spill, thus providing reason to continuously monitor our river and water reservoirs. To observe/monitor the COD's drinking water, it is pertinent to continuously monitor the reservoirs in real-time to catch dramatic changes and provide an alert or warning. A networked system of autonomous surface vehicles (ASVs) equipped with water quality sensors and real-time wireless communication is an economical and effective solution to monitor and ultimately protect Durango's drinking water.

This paper presents the design and fabrication of a networked system of Autonomous Surface Vehicles (ASVs) to continuously monitor the water quality and quantity in Rogers Reservoir and other aquatic resources in the surrounding Four Corners Region. The aim of this project was to provide a proof-of-concept validation for a persistent monitoring system and an aquatic robot algorithm validation testbed. The network consists of

three ASVs for real-time, remote monitoring and rapid detection and alert of changes to water quality. This information will allow COD managers to quickly respond to water quality concerns, and allow for necessary remediation before contaminated water enters the water treatment plant. The COD is in collaboration with Dr. Ryan N. Smith, to develop an automated sampling and monitoring program that will be operated and maintained by Fort Lewis College engineering students for years to come.

In addition to monitoring, the ASVs will also serve as a test platform for robotic development at Fort Lewis College and in the greater aquatic robotics community. Rogers Reservoir has been designated as a proving ground for Fort Lewis College for the development and validation of automated aquatic sampling systems. Particularly, the development of persistent robotic vehicles that operate without human intervention, optimal sampling algorithms, crowd-sourced control synthesis, and multi-robot systems. The implementation of three ASVs allows for direct comparison of different testing algorithms by providing one boat to collect a ground truth sample set and two other vehicles to execute different iterations of a newly developed algorithm. The three vehicles can collect data simultaneously, mitigating any temporal discrepancies in the sampling environment. The networked system also facilitates multi-robot research and development of multi-robot cooperation and sampling methods. The proposed effort augments a similar system implemented by the Queensland University of Technology (QUT) in Australia [1]. A long-term goal of this project is to enable access to these vehicles from the web for users around the world to test and benchmark algorithms and sampling strategies. This will enable interested parties and citizen scientists from around the world to access the ASVs and see results in near real time. Providing the data to the public will foster public engagement in the examination and assessment of natural resources, particularly water, and encourage people to actively participate in environmental issues. This naturally leads to the examination of crowd-sourced control; the public is invited to operate the ASVs to perform an optimization task with results compared with optimal sampling algorithms designed for the same task. By allowing humans to operate the vehicles for an extended time period and tracking the decisions that they are making, we can examine the decision-making process via machine or deep learning methods. From this the strategies that people use can be compared to current mathematical decision making process allowing for improved decision making algorithms [2].

The Robotic GNOME Lab<sup>1</sup> engages in educational

<sup>1</sup><https://www.fortlewis.edu/robotics/>

outreach at local elementary schools. Student workers in the GNOME Lab visit the elementary students in their class rooms and teach them about robotics, the physical properties of water and its importance to humans and the environment. By doing this, we hope to make the STEM fields more accessible to the younger generation and teach them about using robotics as a tool set to learn about the environment.

## II. VEHICLE DESIGN

### A. Hull Types

For this project, the ASVs hull geometry had to provide a storage cavity for batteries and other electronics, while allowing for the attachment of water quality sensors and other electrical components, such as solar panels. The hull needed to be able to withstand adverse weather conditions and robust enough to remain in operation for sustained periods of time. A deployment period may be several days to several months.

Ship hull geometry varies depending on the application the vessel will be performing. The two fundamental ship hull types include displacement and planing, which are characterized by how the vessel maneuvers through the water. Displacement hulls use only buoyancy for support and require minimal propulsion for stability while in motion [3]. Displacement hulls push through water generating a significant amount of flow separation resulting in significant drag forces and limited speed [4]. Different types of displacement hull bottoms include round, square and V-shaped. Sailboats and large ocean liners have rounded hull bottoms which limits them to slower speeds yet provide a smoother ride when subject to rougher waters. An ASV known as the ROAZ [5], created at the Autonomous Systems Laboratory located at the University of California Santa Cruz, utilizes a twin hull configuration, which exhibits phenomenal stability due to the reduced hull volume exposed to the water. The ROAZ also has minimal amounts of area exposed above water which reduces wind drag. Other interesting features include flat decking space for solar panels and electrical components.

A planing hull design glides on top of the water once a certain speed is achieved. However, a planing vessel at rest or low speeds will behave like a displacement vessel and rely strictly on buoyant forces [6]. Typical planing hull bottoms include flat and v-shaped. The flat bottom has a lower draft which is suitable for rivers and lakes. The v-shaped bottom gives a smoother ride than a flat bottom vessel would in turbulent water. A V-shaped vessel could potentially roll or bank in sharp turns, and requires more power to achieve the same hull speed as a flat bottom vessel [7].

There are a verity of hull configurations that were considered as well as hull design. Single-hull configurations

are boats with a single hull that can be either planing or displacement-type hulls. Multi-hull designs are boats with more than one hull. Most multi-hull designs are twin hulls. Tri-hull designs are in use but are less common. Multi-hulled boats can be planing or displacement type. Common examples of multi-hulled vehicles include whitewater rafts, catarafts, inflatable kayaks and catamarans. An advantage of multi-hull designs is that they provide a greater stability than single hull boats with the same hull volume and geometry because they have a larger waterplane area.

The ASVs for this project are oriented towards taking water quality data, they will be operating in small lakes and they will need to be able to support a renewable energy source. This means that operating speed will be slow due to the confined operating area and the desire to collect localized water quality data. They need to be stable due to the high winds that can occur in mountain environments and for the possible implementation of sonar mapping in the future. The vehicles are also meant to be persistent so they will need to be large enough to support two 100-watt solar panels. At the same time the ASV must be small enough to be carried by two people and not exceed a footprint of  $2 \times 2$  m. Subsequently, a twin-hulled displacement vehicle was chosen. This will perform well at slow speed while providing the stability and buoyancy desired with a minimal hull volume and weight. The two hulls were joined with three horizontal support members without a full deck across the top of the vehicle.

The design of the boat was iterated on twice. The first iteration consisted of designing and fabricating one ASV. The vehicle was tested and then the second iteration of the design began. From the second iteration the primary design changes that occurred were in hull geometry. The electrical and control systems were only modified slightly. Two ASVs were fabricated from the second design iteration. The hull designs for the ASVs will be discussed in the following sections.

### B. Initial Hull Design

The chosen design for the first ASV is a twin hull boat with flat bottomed pontoons, as shown in Figures 2 and 3. Electric thrusters were mounted on the back of each pontoon. The thrusters have a fixed pose relative to the pontoon, and steering is accomplished through differential thrust. There are two cavities inside each pontoon to house batteries. A bridge structure made of metal piping supports two solar panels and a pelican case. The pelican case houses a micro-controller, battery charger, temperature and humidity sensor, leak sensor, GPS unit and other electronics that support these components. The total mass of the ASV is just under 45 kilograms.

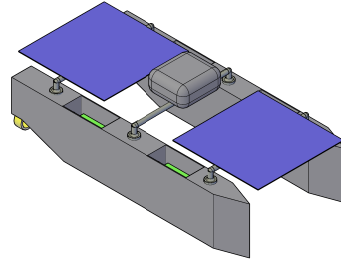


Fig. 2. CAD image of the completed initial ASV design.

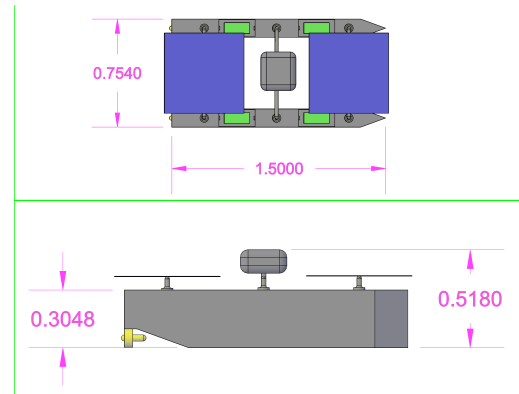


Fig. 3. Annotated images of the initial ASV design.

The front of each hull has a triangular wedge with a  $20^\circ$  half angle. The back of the hull slopes upwards at  $20^\circ$  to allow a thruster to be housed inside the profile of the hull. This provides protection for the thrusters should the pontoon run aground. The shell of the hull is made of fiberglass. Plywood was used for internal framework to provide mounting points for the bridge and a thruster. Hulls were also filled with closed-cell foam to prevent the hulls from taking on water in the event of a puncture. Sections of  $\frac{1}{2}$  inch PVC pipe were used to run electric wiring conduits through the hull and into the bridge. The hull was specifically designed to align the center of gravity with the geometric centroid. The battery compartments were placed approximately 10 cm in front of and behind the geometric centroid of the hull to maintain balance.

The two hulls are connected by a bridge that has three transverse cross-members that are joined by a plate connected to a  $90^\circ$  elbow. The spacing of hulls is approximately 0.5 m (one-third the total length of the hulls). A steel mounting bracket was attached to the center cross-member where the Pelican case is located, as shown in Figures 2 and 3.

The first hull performed relatively well but some areas of improvement were identified for the second iteration on the ASV design. The first hull has a draft

of 12 cm. By changing the geometry of the hull from rectangular to cylindrical the draft was reduced to 5 cm. This reduces the drag on the hulls and conserves power. The position of the thrusters on the second ASV were mounted deeper to avoid cavitation during sudden changes in thrust.

### C. Second Hull Design

The chosen design for the second ASVs was a twin hull boat with round bottomed pontoons, as shown in Figures 4 and 5. The front of each hull has a flat-faced bow and a 30° vertical pitch. The transom is perpendicular to the structure. The electric thruster is mounted to a rudder on the back of each pontoon. The thrusters have a fixed pose relative to the pontoon and steering is accomplished through differential thrust. The structure is ribbed with bulk heads inside each pontoon. The compartments created by the bulkhead house batteries and other components while also preventing the entire hull form filling with water in the event of a puncture. The bridge structure is made of metal piping that support two solar panels and a pelican case. The pelican case houses the micro-controller, battery charger, temperature and humidity sensor, leak sensor, GPS unit and electrical components that support these components. The total mass of this iteration ASV is 28.3 kg. The battery compartments are placed approximately 10 cm in front of and behind the geometric centroid of the hull to maintain balance. This design also aligned the center of gravity with the center of buoyancy.

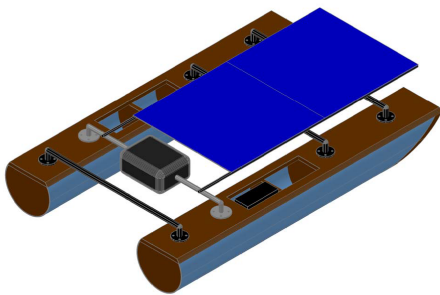


Fig. 4. CAD image of the completed second ASV design.

The two hulls are connected by a bridge that has three transverse cross-members. Each cross-member is attached to a 90° elbow on each end. These elbows are attached to a steel bracket on each hull. The spacing of hulls are approximately 0.5 m (one-third the total length of the hulls), as shown in Figures 4 and 5. The fasteners used for mounting the bracket to the hull consist of bolts inserted from inside the hull and out the top deck. The

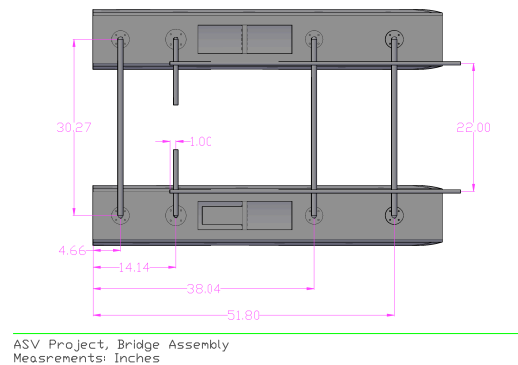


Fig. 5. Annotated image of the second ASV design.

bolts have pan washers on the inside with reinforced epoxy over the top to hold the bolts in place in the event the brackets get removed. The middle brace has the pelican case inline to house the electric components. Galvanized  $\frac{3}{4}$  inch conduit was used to run electric wiring through the hull and into the bridge supporting the pelican case.

### D. Navigation and Control

A number of propulsion methods have been used for ASVs. The two most common means of providing thrust are via a gasoline engine or electric motor connected to an underwater propeller [8]–[11]. Alternative means of providing thrust include the buoyancy-driven underwater glider [12]–[14], and a vectored thrust fan [15]. An underwater glider uses buoyancy and gravity to propel it through the water. Most of the reservoirs in consideration for this project are not large enough to support such a vehicle. Fan boats struggle with winds, as the thrust is dependent on the air speed relative to the boat. An underwater propeller uses significant power, but is the most suitable form of propulsion for this project. A gasoline engine requires refueling, can pollute the surrounding environment by leaking oil and gas, is loud, and harder to control [16], thus is impractical for use in reservoirs of drinking water. An electric motor runs off of rechargeable batteries, can be controlled easily by an electronic speed controller, and does not contain oil or other toxic fluids that can leak into the surrounding environment.

For steering an ASV the three most prevalent designs, based on an underwater propeller are a single fixed direction propeller with a rudder [17], a single propeller that can be rotated to induce turning [17], or two fixed position propellers that operate at different speeds to induce turning [10]. Since these ASVs will be operating in a small body of water with a focus on data collection,

it will be moving slowly and require good maneuvering capabilities at slow speed. A rudder does not provide maneuverability at slow speeds. A thruster that can be articulated will provide the needed maneuverability but it also requires a more complicated control system as the position of the thruster needs to be tracked. Two fixed thrusters were implemented for these ASVs because they can also meet the maneuverability needs of this ASV while requiring a simple control system.

The size of the processor on the ASV will depend on how much weight the vehicle will be able to support and the necessary processing power required. Large surface vehicles carry small computer chips to process data extremely fast and accurately. Data acquisition devices (DAQs) range in all sizes and speeds. DAQs have a range of inputs and outputs that can be coded into the device. Vehicles designed for speed or racing carry real-time operation systems. Real-time operating systems have a clock speed as close to real time as possible. This allows for the vehicles to follow waypoints and avoid obstacles extremely fast and precisely. Real-time operating systems are expensive and frequently used in advanced fluids topics, specifically aerospace. Micro-controllers are also commonly used for ASV applications because they are lightweight and can be powerful. A micro-controller is able to power and control a GPS unit and IMU while also sending digital signals to various components, and was chosen for the primary processor on these ASVs.

There are a select few ways to navigate a robot. GPS navigation is very common for ASV applications because the vehicle is usually located at a location far from data processing. GPS navigation allows vehicles to use an IMU, as well as, incoming GPS signals to navigate from waypoint to waypoint.

Given that the environment is static and there are no obstacles to avoid, GPS navigation was chosen for this project. GPS waypoints and geo-fencing were implemented to set the travel path of the ASV. Geo-fencing is used to keep the ASV in open-water areas away from shallow water. An IMU is integrated to provide roll pitch and magnetic heading feedback to the control system. It also provides some dead-reckoning in the event GPS signals are unavailable. The physical properties of the boat, such as mass, moment of inertia, calculated drag force and thruster output, were used to establish controlling equations for the vehicle. PD and PID control loops based on GPS and IMU data, implemented through the micro-controller, were implemented for error elimination in the control system.

Based on the system requirements above a variety of Micro controllers were evaluated based on cost, memory, number of pinouts and processing speed. National Instruments creates FPGA microchips that run extremely

fast but are very expensive. Multiple Arduino microchips were also compared. The UNO is a cheap \$40 smaller microchip with limited pinouts. The Mega and the DUE have more pinouts however both cost \$50. The DUE has a faster clock speed but requires different source code than the Mega. The Arduino Mega was chosen, it has enough pinouts for our application and Arduino has a large amount of source code that was utilized to simplify the integration of peripheral devices such as GPS, IMU, sensors, and field communication devices.

Following through the blocks in Fig. 6, the navigation system starts by reading the current GPS latitude and longitude. A pre-defined geo-fence is the top of the hierarchy, being the highest level of importance. The ASV's current GPS position is evaluated to determine if the ASV is inside of the geo-fence. If the ASV is inside of the geo-fence, then a waypoint from the predefined list is used as its destination way point. If the ASV's current location is outside the geo-fence, the boat will set a new destination waypoint that is in the middle of the geo-fenced area. The waypoint will be set at the center of the geo-fence until the GPS returns a value that is inside the geo-fence. Next, a bearing is calculated from the ASV's position to the destination waypoint. The ASV's magnetic heading is then determined from the inertial measurement unit (IMU). The angle between the ASV's heading and the waypoint bearing is calculated and used as a turn angle. The ASV's driving commands are then implemented to drive towards the destination waypoint. The ASVs are programmed to first pivot until they are facing the destination way point, and then drive straight towards it. Differential steering is implemented to turn the vehicle. If the angle is greater than  $30^\circ$  then the ASV will pivot in place until the angle decreases to within  $30^\circ$ . The ASV will then begin to drive forward make an arcing turn until the heading measurement aligns with the bearing, at which point the ASV drives straight. The distance between the desired waypoint and the ASV's current location is calculated via the Pythagorean Theorem. When the radial distance between the ASV and the waypoint is less than 3 m, the predefined waypoint is *achieved*, and the array will index to the next waypoint. When the final waypoint is reached, the index is reset and the robot will repeat the path. The ASV can use either the GPS or the IMU to measure it's heading. The IMU uses a tilt compensation algorithm to calculate the ASV's magnetic heading, which enables the GPS to provide a more accurate measurement when the ASV is moving. However, the GPS heading is a result of changing position in GPS coordinates, so it is unreliable when the ASV is not moving. For this reason the IMU is used for pivoting and low speed travel and the GPS is used once the ASV obtains a speed of  $0.5 \frac{m}{s}$ .

For the ASV to operate autonomously and function

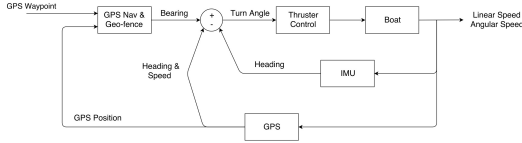


Fig. 6. Control System Flow Chart

as part of a multiple robot system, the microcontroller was programmed to perform four primary tasks, 1) time keeping, 2) navigation, 3) data collection, and 4) communication. To decrease energy demands, the ASV's power is cycled on the electrical devices that do not need to be operating continuously. To perform these tasks, a software flow was developed that would primarily perform time keeping and trigger navigation updates and data collection subroutines at specified time intervals. Navigation updates follow the format discussed in the control system. Data collection consists of first, taking a set of internal measurements to monitor the ASV's performance and to deactivate the ASV if certain perpetrators, such as temperature or humidity in the electronics housing or battery voltage, are exceeded. Second, power is cycled to the external sensors and water quality data is taken. Finally, if the predetermined volume of data has been collected it will be transmitted to an internet database via the 3G cellular module. The software flow chart in Fig. 7 demonstrates the programming logic.

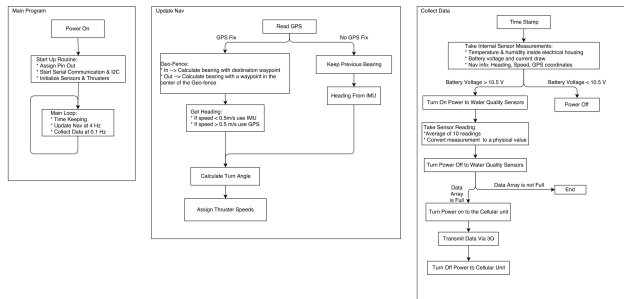


Fig. 7. Software Flow Chart

### E. Electrical System

Based on the constraint of having to autonomously and persistently operate in water, without refueling or contaminating the surrounding environment, the ASVs demand a renewable power system. The energy for the ASV must come from one of the major renewable energy sources; solar, wind, or waves [18]. For similar applications in smaller bodies of water relative to the ocean, solar energy dominates as the most used renewable source of energy. In particular, photovoltaic solar

panels are used to power the entire ASV. This is possible because the photovoltaic solar panel turns solar radiation directly into electricity [19]. In addition, solar panels have relatively high efficiency, in comparison to other types of renewable energy systems. The efficiency values of solar panels range from 10 to 41 plus percent [19]. This direct production of electricity, along with solid efficiency, make solar a prime choice for powering the ASV. Additionally, Colorado has 300 days of clear skies on average each year. The negative factors to consider, are the size of the solar panels, effectively mounting the panels to the ASV, and how to power the ASV at night. Waves are another frequently used renewable energy source. The body of water the ASV will dwell in is a small lake, eliminating the practical use of waves. Wind was considered, but given the abundance of solar power in the location of deployment the solar option was chosen.

The main problem associated with renewable energy is how the energy source fluctuates. For example, solar panels have almost no energy to absorb during the night. The issue has traditionally been solved by storing the energy produced as electric potential. Viable options for electric storage are battery banks, super-capacitor banks, superconducting magnetic energy storage (SMES), or FC-electrolyzer systems [20]. ASVs and other autonomous robots regularly use a system of batteries to store the majority of the collected energy, and was the option chosen here. Weight minimization was considered to help reduce the drag force and the amount of power required.

The ASVs electrical system is based around a solar-powered system that can charge two batteries independently. To charge the batteries individually they can not be tied together into a single power source. To accommodate this, the electrical components had to be assigned to individual batteries. In assigning devices to batteries each battery was given one thruster. One battery was assigned the Arduino Mega, IMU, GPS unit and internal temperature and humidity sensor. The other battery was assigned the field communication device and the water quality sensors. This is a fairly even distribution of the power draws. Once this architecture had been established, means of controlling power flow and protecting the electronics were integrated into the system. The electrical system uses two 20 Amp hour LiFePO4 batteries with a nominal voltage of 13.5 volts for energy storage. The electrical connections to the batteries are controlled by dual-latching relays. These relays not only act as an on-off switch but also enables the ASV to physically sever its connections to the batteries in the event that water leaks into either the battery compartments or the electronics housing. The connections are also severed if the ASV becomes

inverted. An advantage of the latching style relay is that it does not require energy to maintain its connection and thus saves a significant amount of energy. To further protect the electrical system there is a 15 amp, fast-blow fuse in-line with each battery. The thrusters are also protected by individual 12 amp fuses and the water quality sensors have a 100 mA fuse.

Two 100-Watt solar panels connected in parallel are routed through an additional dual-latching relay and a 12 amp fuse. The solar panels supply electricity to a 10 amp dual-battery charger. The battery charger then distributes power to each battery individually. The battery charger uses pulse width modulation (PWM) to charge the batteries with maximum efficiency. A side effect of the The PWM is that it causes power surges that interfere with the operation of the thrusters. Inductors of size 0.1 Henry were placed in-line with the thrusters to mitigate this effect by filtering out the associated change in current. The other electrical components are not effected by the PWM cycles due to their voltage regulators.

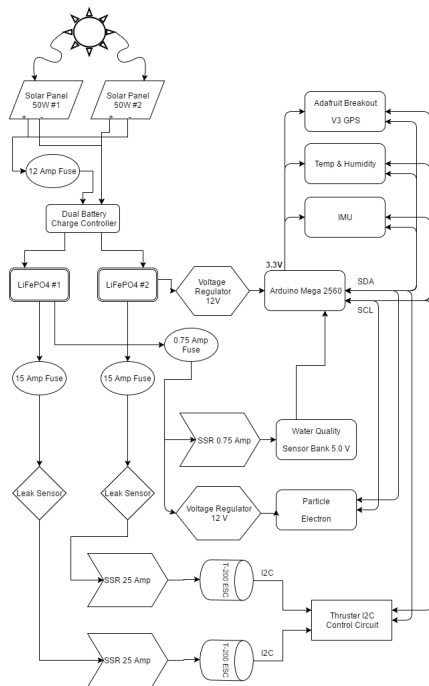


Fig. 8. Electronics Flow

To conserve power, electrical components such as the field communication device and water quality sensors are turned off when not in use. This is completed by using voltage regulators that have enable/disable pins. The power to these components will be completely cut-off to mitigate phantom power draws. The thrusters are brushless DC motors that require electronic speed controllers (ESCs) to control them. These ESCs continually

draw power even when the thrusters are not running. For this reason, power to each of the thrusters is also regulated by a 25 amp, 120 V solid-state relay (SSR). The thrusters use I2C communication with the Arduino Mega to receive thrust commands and report data on RPM and power consumption.

#### F. Communication

The two means of communicating with our vehicles that were considered for this project where Wi-Fi or cellular. Radio and satellite communication where dismissed due to the lack of radio infrastructure and the high cost associated with satellite communications. For the Wi-Fi module, the Particle Photon<sup>2</sup> was selected. The Photon is a re-programmable Wi-Fi development kit for prototyping Internet of Things. For a cellular module, the Particle Electron 3G cellular development kit was chosen. Both come with access to the Particle Cloud, a free cloud service, and are compatible with Arduino. The Particle Cloud comes with over-the-air firmware updates, an easy-to-use REST API, and firmware development supported by web and local IDEs. The Photon specs include:

- Hardware costs \$19.00
- Single band 2.4GHz IEEE 802.11b/g/n
- Supports wireless data rates of up to 65Mbit/s
- Supports Open, WEP, WAPI, WPA and WPA2-PSK WiFi security modes
- Ultra low power sleep, stand-by and stop modes

The Electron 3G specs:

- Hardware costs \$59.00 plus monthly data plan (\$2.99 per Mb per month)
- 1MB Flash, 128K RAM
- Cellular modem: U-Blox SARA U-series (3G)
- information transfer rate of at least 200 kbit/s
- hosts multiple embedded IP protocols, such as TCP/IP, UDP/IP, HTTP, and FTP

The pros of the Wi-Fi module are as follows.

- Cheaper than the Electron.
- The data transfer speeds are higher
- Does not require much power (is able to sleep, be on stand-by, or stop mode).
- It has been on the market for a long time, thus has enormous amounts of support documentation and source code.

The cons of the Wi-Fi are that it is for local transmission (thus has a limited distance range) and it requires additional infrastructure such as antennas and routers, which may not exist near remote water reservoirs.

The pros of the cellular module are as follows.

- Communication can occur wherever there is a 3G network.

<sup>2</sup><https://www.particle.io/>

- It has sufficient data transmission speeds.
- It does not require additional infrastructure.

The cons of using the Electron are that it is more expensive than the Photon and requires more power than the Photon. Additionally, it was recently released (January 2016); however source code for the Electron is exactly the same as code for the Photon.

Based on the objectives for this project, the use of cellular for communication was chosen because it offers the network of ASVs to be used with a greater range of freedom in remote locations. This includes putting the ASVs on other reservoirs where a direct line of sight is not always obtainable, or allowing remote access of the ASVs to researchers around the world to continue developing remote-sampling algorithms. In regards to its power consumption, the Electron will be coded to transmit intermittently, and be put onto a sleep-mode protocol for the rest of the time.

Figure 9 shows a flow chart of how and where data is transmitted. Water quality data is taken with a variety of sensors and transferred directly to the on-board Arduino Mega 2560. The data is then transmitted through an I2C protocol from the Arduino Mega 2560 to the Particle Electron. The Particle Electron then pushes the data via 3G cellular service to the Particle Cloud. A Pull routine is set up through the Fort Lewis College server to request data from the Particle Cloud for long-term storage in a database. An API request also pulls the data and continuously publishes it in real-time to a public website for community access. The website also provides access to the public to control the path of the boat. Public users can create a Google .kml file specifying a path for the boat to follow. The file can be uploaded to the website and a Matlab script formats the path data and uploads it to the boat through the Particle Electron. The boat then implements one iteration of the path and returns to its default path.

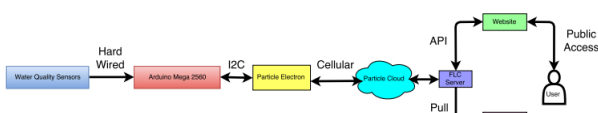


Fig. 9. Communication flow chart.

As of this time, the complete infrastructure of the communication has not been implemented. The water quality data is currently being transmitted from the Electron to the Ubidots cloud where it is displayed in real-time on its website. Each sensor is represented as a variable with its values represented in real-time on the Ubidots website, as shown in Figure 10. We have developed a website on the Fort Lewis College server, as shown in Figure 11, and are finalizing the implementation of the Particle and

HTML code to complete the right hand side of the flow chart, shown in Figure 9.

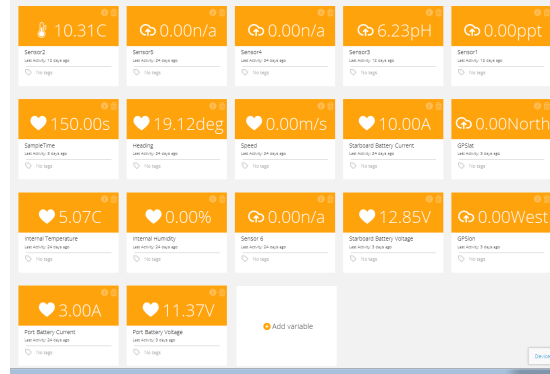


Fig. 10. ASV1 variables presented on the Ubidots website.



### Sensor Data on Rogers Reservoir

The data being pushed continuously from our ASV is displayed in the table below.

Sensor Data						
	PH Level	Dissolved Oxygen	Temperature	Battery voltage	Sensor	Sensor
Normal value	Number	Number	Number	Number	Number	Number
Current value	Number	Number	Number	Number	Number	Number

Waiting for sensor 1...  
 Waiting for sensor 2...  
 Waiting for sensor 3...  
 Waiting for sensor 4...  
 Waiting for sensor 5...  
 Waiting for gps-lat...  
 Waiting for gps-lon...

Fig. 11. Future user-accessible Fort Lewis College website to view real-time water quality data.

### III. CONCLUSIONS AND FUTURE WORK

In conclusion, the purpose project was to build a network of three ASVs. The motivation for building these ASV includes the development of persistent robotic monitoring of fresh water bodies, development of sampling algorithms, multi-robot system, crowd-sourced control and collaboration with the public and robotics community. In designing the ASVs, the first ASV went through the design, fabrication, and testing process. After hull refinements, the second and third ASVs were fabricated with the same control and electronic system as the first ASV. Required functions of the ASVs include



being autonomous, able to monitor water quality continuously and in real time, able to transmit data wirelessly. After data transmission, the values are processed and uploaded onto a webpage in real time. Constraints of each ASV required that it is sized appropriately so it can be transported by two people, and not exceed a footprint of  $2 \times 2$  m. The hulls were also designed to be durable when exposed to mountainous weather common to Southwest Colorado, such as freezing temperature, high wind speeds, hail storms, and low pH water common to the mining areas in the San Juan Mountains.

For the hull design, the design concepts included a mono-hull or multi-hull (catamaran and trimaran) with either a rounded bottom, v-shaped bottom, or flat bottom. For the power design, solar panels were chosen as a renewable power source because they are the most sustainable and practical option for powering the vehicle. LiFePO<sub>4</sub> Batteries were chosen for power storage based upon weight, density (Wh/kg), cost, and lifespan. Blue Robotics thrusters were chosen based on support, power, size, and price. The Arduino Mega 2560 micro-controller was chosen based on cost, memory, pin-outs, and clock-speed. For navigation, GPS waypoint was chosen over LIDAR, inertial navigation, and visual fixed path based on cost, maneuverability, accuracy, and power. Cellular communication was chosen over Wi-Fi because of the existing infrastructure and the broad-range of cellular service in the testing area. The Particle Electron 3G module was chosen over Adafruit and Sparkfun cellular products based on the availability of source code, website support, and cellular data plan.

The microcontroller was programmed to perform four primary tasks: time keeping, navigation, data collection and communication. The ASVs' power is cycled on the electrical devices that do not need to be operating continuously, in order to ease energy demands. A software flow was developed that performs time keeping and triggers navigation updates and data collection subroutines at specified time intervals. For navigation, a list of pre-defined waypoints, in array form, is used to conduct the ASV through a desired path. Geo-fencing is also implemented to prevent the ASVs from running into obstacles or getting beached. Data collection consists of first, taking a set of internal measurements to monitor the ASVs performance and to deactivate the ASV if certain perpetrators, such as temperature or humidity in the electronics housing or battery voltage, are exceeded. Second, power is cycled to the external sensors and water quality data is taken. Finally, if the predetermined volume of data has been collected it will be transmitted to an internet database via the 3G cellular module. After initial tests, the power draw on ASV 1 is greater than anticipated, so two 100 watt panels will be used instead of the original 50 watt panels. This excess power draw

is a result of the thrusters and the Particle Electron using more energy than initially anticipated. In turn, the battery bank is not large enough to sustain full overnight use of the ASV.

Two of the designed vehicles have been successfully deployed in Rogers Reservoir, with collected data posted online in real time. One ASV was deployed for an overnight mission in Phake Lake in the Bernard Field Station in Claremont, CA. Technical issues with a thruster ended this deployment just short of the full overnight goal, however data was continuously streamed to our database and cloud servers. To note, the projected power consumption to make it through the remainder of the night demonstrated that the potential for 24/7 operations is realizable with the current configuration. Future tests are planned in Rogers Reservoir to demonstrate this capability throughout Summer 2016.

Future work for this project includes enabling access to the ASVs via internet. From there, methods of comparing sampling algorithms and multi-robot networking can be developed and crowd-sourced control can be enabled. This should lead to collaborative work with the local community in evaluating the quality of their drinking water and protecting that resource. It should also lead to collaborative work with the greater robotics community in furthering the design of persistent vehicles and control methods. We plan to integrate a robotics program at a local elementary school this fall with the intent of the students controlling the robots intermittently over the course of the semester. Control will then be opened up to the general public. Further expansion of this networked system is planned for other reservoirs in the area, with data presented together for cross-location analysis. Additionally, we are planning on releasing the design schematics, parts list and source code for other interested parties to develop their own vehicle and integrate it into our networked system.

#### ACKNOWLEDGMENTS

The work in this paper was supported by the City of Durango Utilities Department. We would like to thank Steve Salka and Dave Ferguson for facilitating the use of Rogers Reservoir for this project and their continued support for future developments in autonomous monitoring efforts.

#### REFERENCES

- [1] S. Percival, D. Hendrix, and F. Noblesse, "Hydrodynamic optimization of ship hull forms," *Applied Ocean Research*, vol. 23, no. 6, pp. 337–355, 2001.
- [2] W. Al-Sabban, J. Das, and R. N. Smith, "Persistent robot tasking for environmental monitoring through crowd-sourcing," in *Proceedings of the MTS/IEEE OCEANS*, 2013.
- [3] G. L. Diry, "Displacement hull," Mar. 21 1978, uS Patent 4,079,688.

- [4] M. Rabaud and F. Moisy, "Narrow ship wakes and wave drag for planing hulls," *Ocean Engineering*, vol. 90, pp. 34–38, 2013. [Online]. Available: <http://dx.doi.org/10.1016/j.oceaneng.2014.06.039>
- [5] H. Ferreira, A. Martins, A. Dias, C. Almeida, J. Almeida, and E. Silva, "Roaz autonomous surface vehicle design and implementation," *Robotica*, 2006.
- [6] D. Savitsky and P. W. Brown, "Procedures for hydrodynamic evaluation of planing hulls in smooth and rough water," *Marine Technology*, vol. 13, no. 4, pp. 381–400, 1976.
- [7] C. H. Donald, "Boat hulls," May 2 1967, uS Patent 3,316,874.
- [8] J. Curcio, J. Leonard, and A. Patrikalakis, "Scout-a low cost autonomous surface platform for research in cooperative autonomy," in *OCEANS, 2005. Proceedings of MTS/IEEE*. IEEE, 2005, pp. 725–729.
- [9] J. Manley, "Development of the autonomous surface craft 'ACES'," *Oceans 1997*, vol. 2, pp. 827–832, 1997.
- [10] M. Caccia, R. Bono, and G. Bruzzone, "Design and preliminary sea trials of SESAMO: an autonomous surface vessel for the study and characterization of the air-sea interface," no. December 2003, pp. 1–15, 2003. [Online]. Available: <http://citeseerx.ist.psu.edu/viewdoc/download?doi=10.1.1.129.7842&rep=rep1&type=pdf>
- [11] J. Curcio, J. Leonard, and A. Patrikalakis, "SCOUT - A low cost autonomous surface platform for research in cooperative autonomy," in *Proceedings of MTS/IEEE OCEANS, 2005*, vol. 2005, 2005.
- [12] D. C. Webb, P. J. Simonetti, and C. P. Jones, "{SLOCUM}: An Underwater Glider Propelled by Environmental Energy," *IEEE Journal of Oceanic Engineering*, vol. 26, no. 4, pp. 447–542, oct 2011.
- [13] D. L. Rudnick, R. E. Davis, C. C. Eriksen, D. M. Fratantoni, and M. J. Perry, "Underwater Gliders for Ocean Research," *Marine Technology Society Journal*, vol. 38, no. 2, pp. 73–84. [Online]. Available: <http://www.ingentaconnect.com/content/mts/mts/2004/00000038/00000002/art00009>
- [14] Webb Research Corporation, "Slocum Electric Glider," [\url{http://www.webbresearch.com/slocumglider.aspx}](http://www.webbresearch.com/slocumglider.aspx), Slocum Glider, 2008.
- [15] S.-H. Yoo, A. Stuntz, Y. Zhang, R. Rothschild, G. A. Hollinger, and R. N. Smith, "Experimental analysis of receding horizon planning for marine monitoring," in *International Conference on Field and Service Robotics*. Toronto, Canada: Springer, jun 2015.
- [16] M. Caccia, "Autonomous surface craft: Prototypes and basic research issues," *14th Mediterranean Conference on Control and Automation, MED'06*, p. 1–6, 2006. [Online]. Available: <http://ieeexplore.ieee.org/Xplore/cookieDetectResponse.jsp?reload=true>
- [17] J. Manley, "Development of the autonomous surface craft 'ACES'," *Oceans '97. MTS/IEEE Conference Proceedings*, vol. 2, 1997.
- [18] J. E. Manley, "Unmanned surface vehicles, 15 years of development," *Oceans 2008*, pp. 1–4, 2008.
- [19] B. K. Hodge, *Alternative Energy Systems AND Applications*, M. McDonald, Ed. John Wiley & Sons, Inc.
- [20] C. Wang, S. Member, and M. H. Nehrir, "Power management of a stand-alone wind / photovoltaic / fuel cell energy system," *Energy*, vol. 23, no. 3, pp. 957–967, 2008.