

# Large-Scale Assessment of Coral Reefs with a Team of Heterogeneous Aquatic Robots

Alberto Quattrini Li<sup>1</sup>, Ioannis Rekleitis<sup>1</sup>, Sandeep Manjanna<sup>2</sup>, Nikhil Kakodkar<sup>1</sup>, Gregory Dudek<sup>2</sup>, Leonardo Bobadilla<sup>3</sup>, Jacob Anderson<sup>4</sup>, and Ryan N. Smith<sup>4</sup>

<sup>1</sup> University of South Carolina, Columbia, SC 29208 USA,  
[albertoq,yiannisr]@cse.sc.edu

<sup>2</sup> McGill University, Montreal, QC, Canada  
[msandeep,nikhil,dudek]@cim.mcgill.ca

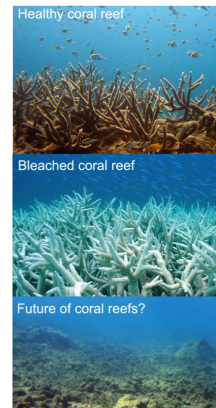
<sup>3</sup> Florida International University, Miami, FL 33199 USA  
bobadilla@cs.fiu.edu

<sup>4</sup> Fort Lewis College, Durango, CO 81301 USA  
[jaanderson,rnsmith]@fortlewis.edu

## 1 Motivation, Problem Statement, Related Work

In this paper, we examine the utility of a heterogeneous fleet of aquatic robots to cooperatively assess large-scale aquatic ecosystems, with a specific focus on representing the responses of coral reef ecosystems to climate change. We approach this problem through a unique blend of persistent aquatic sampling, vision-based sensing, and cooperative mission planning across a fleet of heterogeneous assets. Coral reefs are a critical part of the marine ecosystem and support a rich diversity of life with consequent economic value and social amenity. However, sea surface temperatures have increased over the past few decades, resulting in widespread coral bleaching at an ever-increasing rate. Projected increases in global temperatures of 2–4.5°C by 2100 [1] indicate that mass coral bleaching events are likely to become an annual phenomenon by 2050. The widespread mortality of corals following mass bleaching events reduces the structural complexity of reefs – eliminating the three dimensional habitat, which is critical in maintaining diversity and sustainable populations of coral-reef fish communities; see Fig. 1. Despite the importance of coral reef ecosystems, spatial and temporal dynamics of coral bleaching events are poorly understood.

Most surveys of coral bleaching have been conducted using either human divers or remote sensing (satellite imagery), but these approaches are fundamentally limited in scale or definition. Satellites are able to cover large spatial scales (10s of m<sup>2</sup> to km<sup>2</sup>), and approximate percentage of coral cover, but are unable to resolve fine-scale ecological changes (centimeters to meters) of individual corals. *In*

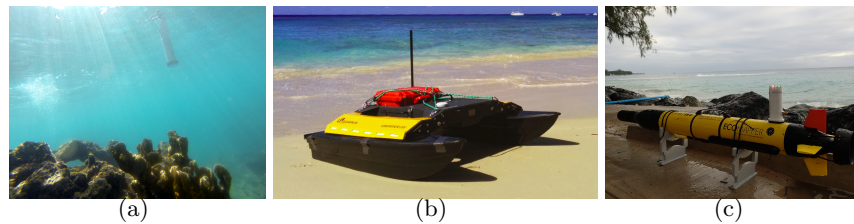


**Fig. 1.** Representative photographs of the decline in coral reefs due to coral bleaching.

*situ* measurement by divers can provide such data, but at limited spatial scales ( $< 1 \text{ km}^2$ ) and at high cost. Earlier work on multi-robot monitoring focused on targeted data acquisition with the guidance of a marine biologist and not on extended coverage [2].

Aquatic robots provide a novel solution to the fundamental problem of large-scale precise coverage, and represent a viable approach to quantifying the extent of fine-scale coral bleaching and reef structural complexity over large areas ( $> 100 \text{ km}^2$ ), for long periods of time (days to weeks), and importantly, at comparatively low cost. There are three critical research problems in better understanding coral reef health: 1) monitoring of individual coral with respect to bleaching and structural complexity across large spatial scales ( $> 100 \text{ km}^2$ ); 2) quantifying changes in coral bleaching and structural complexity over time; 3) using these measures to assess reef and reef ecosystem health and to predict health under various scenarios. This paper describes ongoing research to approach the first two problems, while eventually gathering the data necessary to help address the third. More specifically, in this paper we use a combination of several classes of robotic assets to jointly survey a coral reef in the Caribbean Sea. Each class of vehicle provides complementary operational characteristics, sensing modalities, and time-scale of operations.

## 2 Technical Approach



**Fig. 2.** The different vessels used in the proposed approach (a) Drifter sensor nodes; (b) Kingfisher ASV; (c) EcoMapper AUV.

Given the large spatial scales of coral reefs, it is impossible to sample everywhere at very high resolution with short-term deployment (hours) of robotic assets. We need to examine the utility of persistent vehicles, which may provide a sparse sampling of the environment, to inform sampling missions to be executed by shorter-duration vehicles with high-resolution sensor packages. In this paper, we utilize floating drifter nodes to capture monocular image data. These image data will be then 1) compared with sonar data collected by an AUV over the same area; 2) compared to stereo imagery collected from an ASV; 3) collated to create a mosaic to inform detailed sampling by either the ASV or AUV of *interesting* regions, e.g., coral bleaching. The research questions that we address through this work are: 1) What control and/or communication is necessary between drifters to ensure adequate/optimal information to inform high-resolution sampling of a given region? and 2) What data products are re-

quired to be fused to provide an accurate representation of the bathymetry and structural complexity of the sea floor?

### Visual Mosaic from Drifting Nodes

A set of inexpensive drifters has been developed to collect visual, inertial, and GPS data over long periods of deployment. Currently their operation is limited by the battery charge to eight hours, however the power consumption is low enough and it can easily be extended. These sensor nodes are based on the Raspberry PI2 computing unit and camera, and they are also equipped with IMU and GPS sensors. One of the main objectives of these drifters was to model Lagrangian water dynamics, by tracking the motion of a body of water [3] over long distances. The ability to collect visual data enabled the use of these drifters in a coral reef monitoring function [4]. The motion of the drifting sensor nodes at the surface includes a fair amount of bobbing as they are not stabilized; see Fig. 2(a). Consequently each drifter rotates off the vertical by  $30^\circ - 45^\circ$ , thus expanding the regular field of view (FoV) of the camera of  $60^\circ$  more than  $120^\circ$ . In addition, the slow Lagrangian motion of the drifters results in multiple images of the same area taken from the slightly different positions, allowing for a more robust multi-view reconstruction. A modular visual pipeline framework based on OpenCV has been implemented to create patches of visual mosaics. Specifically, according to the specific data sets, it is possible to choose different feature detection algorithms, descriptors, and feature matching algorithms. Augmenting vision with inertial data enables the recovery of the drifter's attitude and discarding of the images with sharp rotations that could result in loss of tracking. Being geo-referenced, the large amount of visual data collected can be cross-referenced with the data collected from the other vessels.

### Intelligent Drifting

Given these long-term assets, we build on the concept of *controlled drift* developed by Smith et al. [5,6]. Specifically, a general desired trajectory can be achieved by using known and/or predicted ocean currents. Directly related to the areas where coral reefs exist, these platforms can operate in dynamic, coastal environments, as well as confined regions, e.g., embayments, and navigate between pre-designated waypoints. Here, we examine the utility of an *a priori* ocean velocity survey to inform drifter movement patterns and consider the problem of optimal placement of the drifters to achieve a prescribed sampling of the environment.

### Coverage Strategies

One of the essential features of a good coverage algorithm is to visit the hot-spots in the increasing order of their value. This becomes significant when the task is to cover a given region in limited time. After the long-term assets (drifters) have collected enough information, the short-term assets, such as the AUV and the ASV, will travel to select locations to collect additional information. A selective

coverage algorithm with the behavior of choosing the salient regions to examine first is tested using the ASV. This algorithm is value-iteration based which covers the entire region of interest, but in a prioritized fashion. The selective coverage algorithm assumes an underlying distribution for the phenomenon that needs to be modeled and build an off-line trajectory to cover the high probability regions along with a concern to reduce the travel time and energy consumption. In the case of coral monitoring, the actual depth map is utilized as an input distribution to cover the shallower regions with a precedence, thus making sure the corals are fully covered before the robot runs out of battery. The fundamental assumption that, in a given area, the coral-heads are at shallower depths than the plain sand is made; an assumption based on observations during field trials and inputs from experts in marine robotics. Based on this assumption, covering the shallower regions would provide a good coverage of the corals in the selected region.

### Informing Detailed Sampling from Sparse Data

Viewpoint planning is an important technique for fulfilling tasks that require intentional actions such as complete 3D reconstructions of unknown objects. This specific problem of how to effectively collect information for a particular task has seen limited active research for large-scale domains. However, the concept of finding an optimal viewpoint based on maximal information gain has been widely studied in the perception and manipulation communities [7–9]. In these communities, the problem is referred to as the Next-Best View (NBV) problem. The primary challenge of mission adaptation using online viewpoint planning is that the optimization constraints, specifically an overall time constraint, pose an NP hard problem (similar to the traveling salesman problem). In this paper, we look to extend the NBV problem by computing the views that optimize camera reprojection error over the entire scene. Relaxation of the optimization constraints combined with an innovative planning strategy based on Gaussian Processes compute a feasible path for an AUV.

This builds on the work of McKinnon et al. [10, 11], in which highly accurate 3D reconstructions of branching coral with complex geometry were computed. The outcome of ‘online’ viewpoint planning will be the first *in situ* 3D spatial models of corals with sufficient accuracy to quantify changes in the structural complexity of coral reefs before, during, and after periods of thermal stress.

### Data Comparison and Fusion

Comparison of the collected data, potentially taken at different times, requires alignment and/or registration between the datasets. This has proven to be a difficult problem for large underwater datasets [12] as growth of algae and coral significantly change their appearance over time, as well as the presence of lighting differences and different data modalities. We plan to utilize standard, appearance-based data registration techniques and include geometric information using 4-point congruent sets [13] to fuse all datasets together into a single reconstructed map.

### 3 Experiments

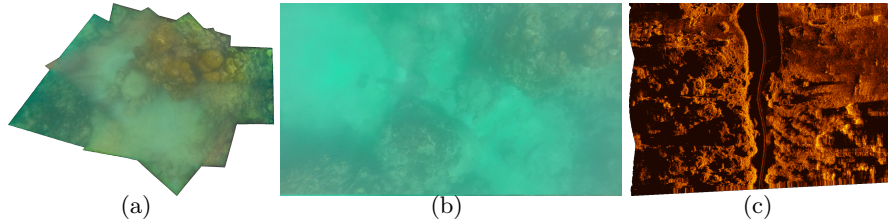
An area in the Folkestone Underwater Park and Marine Reserve, Barbados, was selected for deploying three heterogeneous, data-collecting assets; six drifting sensor nodes, a Kingfisher autonomous surface vehicle (ASV), and a YSI EcoMapper autonomous underwater vehicle (AUV). Figure 3 shows the region covered by each asset, and the overlapping regions covered by the three vessels.



**Fig. 3.** The GPS traces of the three different kinds of vessels: Drifters red, ASV yellow, AUV orange.

### 4 Results

Images with resolution of  $640 \times 480$  were captured by the camera mounted on each of the drifters. The cameras operated at 10 FPS with a field-of-view of  $\sim 50^\circ$ . The Kingfisher ASV collected stereo and monocular images using GoPro cameras mounted at the bottom of the vessel. Sonar data were collected with a Starfish Side-Scan sonar attached to a YSI EcoMapper AUV. The sonar operates at a frequency of 450 kHz, and has a range of 1 m - 100 m, with a vertical beam width of  $60^\circ$ . Given an average height of 5 m over the survey area, the sonar swaths were approximately 8.7 m. A sample of the different data resulting from the three vessels is presented in Fig. 4.



**Fig. 4.** Data collected from the different assets (a) A mosaic of the drifter; (b) kingfisher ASV; (c) EcoMapper SONAR.

### 5 Main Experimental Insights

- Given the drifters' limited range, enhancing the capabilities of these assets will be a first priority; particularly their ability to move vertically in the water column. From the preliminary data collected, they show great promise by providing the right type of data and persistence in the environment.
- We expect an interesting comparison between the visual mosaic (drifters) and the sonar-based mosaic (Ecomapper), in terms of coverage, resolution, and feature recognition.

- A central question is to qualify the gains from utilizing different assets for different data collection modalities. Specifically, over a shallow reef, does the persistence of the drifters outweigh the speed of the EcoMapper?
- Supposing that all assets are collecting data simultaneously, we are interested in what communication capabilities between the devices would be useful.
- Based on experience, the drifters tend to *drift* away, understandably. We would like to investigate the problem of drifter collection via a surface vehicle. What kind of control/communication is necessary on-board the drifters to ensure that none are *lost*?

## References

1. IPCC: Climate change 2007: The physical science basis. In Solomon, S., Qin, D., Manning, M., Chen, Z., Marquis, M., Averyt, K., M.Tignor, Miller, H., eds.: Contribution of Working Group I to the Fourth Assessment Report of the Intergovernmental Panel on Climate Change. Cambridge University Press, Cambridge (2007)
2. Shkurti, F., Xu, A., Meghjani, M., Higuera, J.C.G., y. Girdhar, Giguere, P., Dey, B.B., Li, J., Kalmbach, A., Prahacs, C., Turgeon, K., Rekleitis, I., Dudek, G.: Multi-domain monitoring of marine environments using a heterogeneous robot team. In: IEEE/RSJ International Conference on Intelligent Robots and Systems, Portugal (Oct. 2012) 1447–1753
3. Boydston, D., Farich, M., III, J.M., Rubinson, S., Smith, Z., Rekleitis, I.: Drifter sensor network for environmental monitoring. In: 12th Conference on Computer Robot Vision, Halifax, Nova Scotia, Canada (June 2015) 16–22
4. Xanthidis, M., Quattrini Li, A., Rekleitis, I.: Shallow coral reef surveying by inexpensive drifters. In: MTS/IEEE Oceans. (Apr., (accepted) 2016)
5. Smith, R.N., Dunbabin, M.: Controlled drift: An investigation into the controllability of underwater vehicles with minimal actuation. In: Proceedings of the Australasian Conference on Robotics and Automation. (December 2011)
6. Smith, R.N., Huynh, V.T.: Controlling Buoyancy-Driven Profiling Floats for Applications in Ocean Observation. IEEE Journal of Oceanic Engineering **PP**(99) (2012) 1–16
7. Connolly, C.: The determination of next best views. Proceedings IEEE International Conference on Robotics and Automation (1985) 432 – 435
8. Elfes, A.: Using occupancy grids for mobile robot perception and navigation. Computer (Jan 1989)
9. Torabi, L., Gupta, L.: An autonomous six-dof eye-in-hand system for in situ 3d object modeling. The International Journal of Robotics Research **31**(1) (Jan 2012) 82–100
10. McKinnon, D., Upcroft, B., Smith, R.N.: Towards automated and in-situ, near-real time 3-d reconstruction of coral reef environments. In: Proceedings of the MTS/IEEE Oceans '11 - Kona, Kona, Hawaii (September 2011)
11. McKinnon, D., Smith, R.N., Upcroft, B.: A semi-local method for iterative depth-map refinement. In: Proceedings of the IEEE International Conference on Robotics and Automation, Minneapolis, MN (May 2012)
12. Johnson-Roberson, M., Pizarro, O., Williams, S., Mahon, I.: Generation and visualization of large-scale three-dimensional reconstructions from underwater robotic surveys. Journal of Field Robotics **27**(1) (2010) 21 – 51
13. Aiger, D., Mitra, N.J., Cohen-Or, D.: 4-points congruent sets for robust surface registration. ACM Transactions on Graphics **27**(3) (2008) #85, 1–10