

# Adaptive Path Planning for Tracking Ocean Fronts with an Autonomous Underwater Vehicle

Ryan N. Smith, Philip Cooksey, Frederic Py,  
Gaurav S. Sukhatme, and Kanna Rajan

**Abstract.** Ocean fronts are productivity *hot spots*, supporting marine life from plankton to whales. These dynamic systems contain a vast amount of information, and have the potential to significantly expand our knowledge of aquatic ecosystems in relation to climate change. However, ocean fronts and other dynamic features cannot be studied through conventional oceanographic techniques. In this paper, we address the problem of sampling and tracking an ocean front with an Autonomous Underwater Vehicle based on predictions and/or priors provided by a heterogeneous team of assets and ocean models. Specifically, given a prior (that may not be accurate or up-to-date) we present a method for an underwater vehicle to plan a mission and adapt this mission on-the-fly to track a dynamic feature. Results from field trials are presented, and demonstrate that the vehicle is able to adapt its path to follow a desired contour.

## 1 Introduction

An oceanic front is a narrow band of enhanced horizontal gradients of water properties (temperature, salinity, nutrients, etc.) dividing broader areas with different water masses or vertical structure. Fronts occur across a variety of spatial scales; along-frontal scales of 1 km to 10,000 km, cross-frontal scales of 10 m to 100 km, and vertical scales of 10 m to 1000 m. Temporal scales vary from days for transient fronts, e.g., an upwelling front in Monterey Bay, to millions of years for quasi-stationary, large-scale transoceanic fronts, e.g., the Kuroshio Front off the eastern coast of Japan. Ocean fronts have been linked to elevated primary production and enhanced diversity of species; *hot spots* for marine life, across an astonishing spectrum of scales from plankton to whales. These frontal *hot spots* hold a wealth of information to improve our understanding of aquatic

---

R.N. Smith is with the Physics and Engineering Department, Fort Lewis College, Durango, CO, USA, email: rnsmith@fortlewis.edu

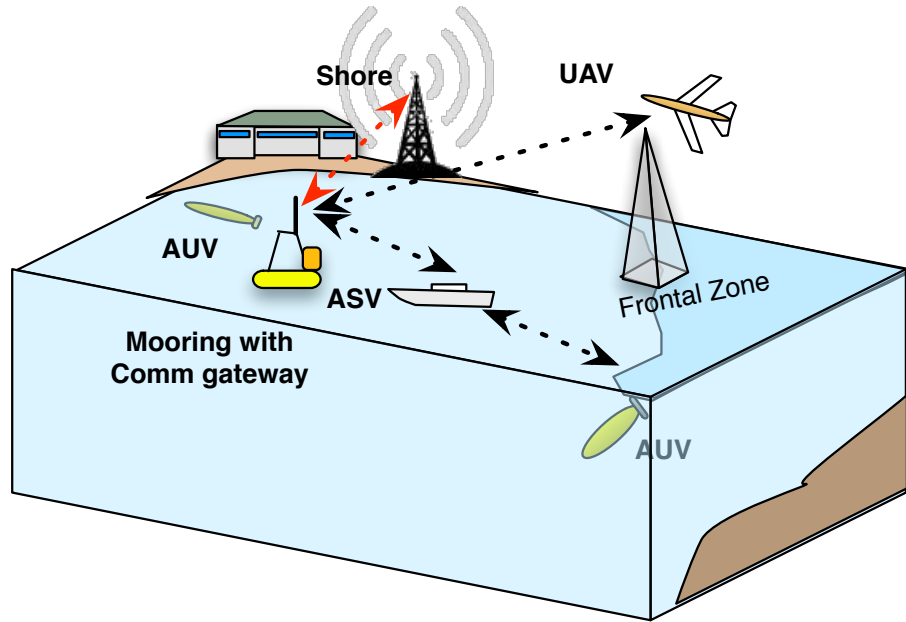
P. Cooksey is with the California State University, Monterey Bay, Monterey, CA USA, email: pcooksey@csumb.edu

F. Py and K. Rajan are with the Monterey Bay Aquarium Research Institute, Moss Landing, CA USA, email: kanna.rajan, fpy@mbari.org

G.S. Sukhatme is with the Robotic Embedded Systems Laboratory and the Dept. of Computer Science, University of Southern California, Los Angeles, CA 90089 USA  
e-mail: gaurav@usc.edu

ecosystems in relation to climate change, however ocean fronts cannot be studied through conventional oceanographic techniques [1].

It is of interest to determine whether or not it is possible to develop a biological model for activity at or within an ocean front for ecological purposes. To develop such a model, we must first gather enough information to begin to characterize these dynamic systems at multiple scales, both temporally and spatially.



**Fig. 1.** An envisioned scenario in the near future, with the use of AUVs, autonomous surface and aerial platforms finding, tracking and sampling frontal zones.

At a high level, we envision a scenario similar to that shown in Fig. 1. The objective is that coordinated observation between aerial, surface and underwater platforms is critical in observing dynamic biological phenomenon with varying spatial and temporal scales (from minutes to weeks and tens of sq. km to hundreds of sq. km). The frontal signature is initially detected by an Unmanned Aerial Vehicle (UAV) or remotely sensed by satellite. This information is communicated to shore or a relay for analysis and response. A team of Autonomous Surface Vehicles (ASVs) and Autonomous Underwater Vehicles (AUVs) is then deployed to locate, sample and track the front, with the goal to characterize the physical and biological processes occurring.

In this paper, we address the problem of sampling and tracking an ocean front with an AUV based on the predictions and/or *priors* provided by other members of the heterogeneous team of assets, as well as ocean models. Specifically, given

a prior (that may not be accurate or up-to-date) can the AUV adapt its mission to find and track a dynamic feature? From the initial prior, a static plan can be created for optimal sampling, if we assume the feature is stationary. However, an ocean front is expected to evolve and move throughout the duration of a sampling campaign. Additionally, there is latency in the communication from the aerial sensor to the aquatic sampling assets. Hence, we must develop a technique for the vehicle to adapt to an ever-changing frontal signature.

## 2 Related Work

Robotic platforms hold the promise of a revolution in ocean sampling. Considerable study has been reported on control design for AUVs for adaptive ocean sampling and coordinated control of multi-vehicle systems, e.g., [2–8]. Applications of ocean sampling techniques for AUVs are discussed in [5, 6, 9–12], with ocean front perception and detection specifically addressed in [2, 13–15]. Ocean front detection and characterization has been extensively studied without in situ robotics through satellite remote sensing [16, 17]. These algorithms provide the foundation for the priors supplied by the aerial sensor platforms seen in Fig. 1. Along with steering an AUV to the right locations, research exists in the area of static sensor placement to maximize knowledge return [18].

Existing sampling methods are currently all based on a geographical coordinate system, i.e., latitude and longitude. However, the definition of geographical space is ill-defined in the ocean and complex ocean dynamics make geographic-relative navigation difficult, specifically when tracking dynamic and episodic events. Sampling at uniformly distributed geographic coordinates can generate a suboptimal distribution of samples given the dynamic nature of the oceans’ water masses. Adapting to the changing environment is crucial to characterizing and eventually understanding these dynamic frontal systems.

To address adaptation, researchers have implemented human-in-the-loop solutions; static paths are created and alternative static paths are generated by domain experts after analyzing collected data [19–21]. These methods have their advantages, however we are interested in enabling decision making for path adaptation on-board the vehicle. Further results have implemented information-based metrics and machine learning to optimally determine a path or sensor placement based on reduction of overall covariance of the scalar field in question. Recent work in [2] begins to address the issue of on-board decision making and adaptation, and approaches the problem from a multiple underwater vehicle point-of-view, with constraints on communication among the fleet. Here, we enable in situ robotic adaptation to environmental conditions for a single vehicle based on real-time measurements for targeted sampling of ocean fronts.

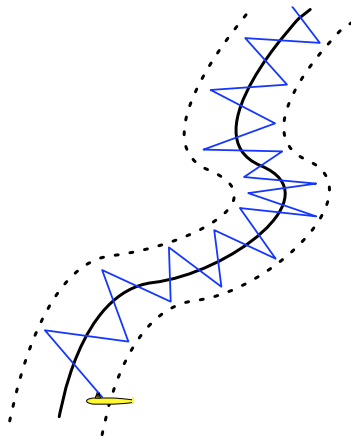
## 3 Algorithm Design

The goal of this paper is to plan a path for an AUV to execute that enables sampling of a dynamically-evolving ocean front. The first step we take is to

generate an initial path based on given priors which assumes that the front is static in space and time. This initial path provides the basis from which we will adapt to track the evolving feature. The initial path is generated as a regular, zig-zag pattern, crossing the frontal boundary with a predefined swath width, see Fig. 2. Then, we adapt on-the-fly to track the front based on in situ measurements. Since the desired sampling strategy inherently requires repeated traversal through the ocean front, the adapted path will also resemble a zig-zag structure.

### 3.1 Initial Path

As our focus is on the mission adaptation of the AUV, we provide the vehicle with a prior estimation characterizing the location of an ocean front from an Unmanned Aerial Vehicle (UAV) or satellite, see Fig 1. This prior can be provided as a KML file and is assumed to be temporally latent and inaccurate. The KML file characterizing the prior for the observed front is the input to the proposed algorithm to plan an initial path to survey the *observed* ocean front. As it is assumed that the front has moved since the observation, the initial path plan is very conservative with regard to the spatial footprint of the front. From the provided prior observation, we parameterize the boundary of the front to a curvilinear line in 2-D. We assume that a front can be represented as a single<sup>1</sup>, continuously-differentiable function, i.e., we assume the parameterization of the front is  $\mathcal{C}^1$ . The initial path plan, computed on-board the AUV, is a regular, zig-zag pattern, crossing the frontal boundary with a predefined swath width, see Fig. 2. Assuming that the speed over ground of the AUV is constant, we vary



**Fig. 2.** Representation of the initially computed survey path.

<sup>1</sup> A discontinuity is assumed to represent two different fronts, and ocean physics negate the possibility of non-differentiable locations along a front.

the speed along the parameterized frontal boundary, and hence the horizontal spatial resolution, by expanding or contracting the periodicity of the zig-zags. The technique applied is similar to what was done in [5]. In this approach, we rotate the planning method  $90^\circ$  to generate zig-zag paths in the horizontal plane. The candidate waypoints for this zig-zag path are the points defined by the two dashed lines in Fig. 2; one on either side of the parameterized prior (the solid black lines in Fig. 2). The lines are located a distance one-half the predefined swath width from the parameterized prior, with their tangent vector at each point matching that of the respective point of the parameterized prior. The degree of compression or expansion of each zig-zag period is proportional to the inverse of the derivative (curvature) of the parameterized prior at each location. Specifically, in areas of low curvature (straight line) we prescribe a zig-zag path that covers equal distance in the along and cross-track directions for each period. In areas of high curvature, we perform higher density sampling by reducing the distance covered in the along-track direction. The proposed method acts to resolve a non-linear frontal boundary.

### 3.2 Adaptation Algorithm

The basis for path adaptation to track and sample an ocean front is governed by two assumptions. First, the frontal boundary can be represented as a continuously-differentiable function in 2-D, i.e., the front is  $\mathcal{C}^1$ , over short horizons. Secondly, optimal sampling of the front is carried out by repeatedly crossing through the frontal boundary with the AUV. Given these assumptions, the adaptation algorithm takes the relevant science parameter(s) as an input, analyzes the collected data, determines the location of the frontal boundary, predicts the location of this frontal boundary, and assigns a new waypoint that steers the vehicle through the front. For each path segment ( $T_i$ ), data is recorded in a ROS bag file and sent to the T-REX. The T-REX then perceives if and when the AUV has crossed through the frontal boundary, and records this location ( $l_i$ ). Determination that the AUV has crossed through the frontal boundary is based on the technique developed in [14].

To begin, the vehicle executes the first three path segments of the initially computed path. During this phase, the only adaptation we allow T-REX to make is that the vehicle can continue a fixed distance past a prescribed waypoint if it perceives that the vehicle has not reached or is still within the front, or it allows the vehicle to stop early if it perceives that the vehicle has already crossed through the front. This initialization process is implemented because we expect the front to move spatially between the time of acquiring the initial delineation and the time the AUV begins its mission. Additionally, we require some data on the location of the frontal boundary to base our predictions for adaptation. We remark here that the proposed algorithm is highly sensitive to the initial conditions of the deployment. Specifically, this method is not intended to *find* or *locate* ocean fronts, but rather to track and sample them adaptively. If the initial prior is incorrect, or the front has significantly moved from the original detection location, the proposed method will not work.

**Algorithm 1:** NEWWAYPOINTS([Step, Lon, Lat, Param][1...n])

---

```

CubicSpline spline
comment: CubicSpline fixed 2nd derivative
{
  set<pair<double,double>> waypoints
  int splineCount = 0, nextStep = 1
  bool inFront = false
  beginBoundaryTracking = false
}
for iterator ← 1 to n (in data[Step][])
  do
  if not beginBoundaryTracking AND data[Step][iterator] ≥ nextStep
    then beginBoundaryTracking = true
  if beginBoundaryTracking
    then {
      double depth = data[Depth][iterator]
      if (not inFront AND Param ≥ VALUE)
      OR (inFront AND Param ≤ VALUE)
        then {
          spline.addPoint(data[Lon][iterator])
          spline.addPoint(data[Lat][iterator])
          then {
            inFront = not inFront
            splineCount + = 1
          }
          beginBoundaryTracking = false
        }
    }
  if splineCount ≥ 3 AND data[Step][iterator] ≥ nextStep
    then {
      double longitude = data[Lon][iterator] - 0.0002
      comment: Get next longitude value.
      comment: Based on location and fixed interval.
      double latitude = spline(longitude)
      comment: Spline generates latitude value.
      comment: Based on longitude input and previous spline points.
      waypoints.insert(longitude, latitude)
      nextStep = data[Step][iterator] + 1
    }

```

---

The initially detected frontal boundary locations,  $l_i$  for  $i = 1, 2, 3$  are used by T-REX to predict the frontal boundary location over a short horizon. Since we assume the front to be  $\mathcal{C}^1$ , we use a cubic spline to fit the previously gathered data and predict the most likely location of the frontal boundary. After the initial three path segments (four waypoints) are executed, we are only interested in computing the *next* waypoint for the AUV. T-REX generates this single waypoint based on the predicted location of the front. This process is iterated until the front is no longer detected or the AUV reaches the end of the desired sampling region. The pseudocode for the adaptation of the vehicle path is presented in Algorithm 1.

At any time, the prediction algorithm relies on at most, the last three observed locations of the frontal boundary. Thus, we assume that locally the front

is  $C^1$ , but that globally this may not be the case. In particular, we do not expect that the proposed short horizon prediction will effectively describe a front over one million kilometers.

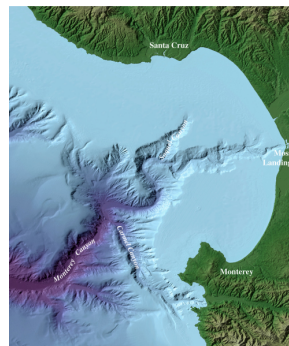
Once the adaptation phase is initiated after the execution of the initial three path segments, the vehicle behavior is controlled by applying a specified heading computed by T-REX based on the predicted location of the frontal boundary. While T-REX does output a waypoint to steer the AUV through the front, the length of the adapted path segment is ultimately determined by data from in situ sampling along the path.

## 4 Experiments

For this research, field experiments were carried out in Monterey Bay, California with a YSI EcoMapper AUV [22], as shown in Fig. 3. The EcoMapper AUV was deployed and recovered from the beach, enabling ease of multiple tests without the need for significant support infrastructure; bottom image of Fig. 3.



**Fig. 3.** The YSI Ecomapper Autonomous Underwater Vehicle (top), and the beach deployment of the vehicle (bottom).



**Fig. 4.** Bathymetric relief of the Monterey Canyon.

### 4.1 Algorithm Implementation

The adaptation of the sampling path occurs incrementally as the vehicle follows and samples within and along the front. The low-level functionality of navigation to a specified location is handled through a ROS interface on-board the vehicle [23, 24]. ROS was also used to gather and distribute the sensor data, which informed the high-level, decision-making process for adaptation. The high-level

decision of plan synthesis is executed on-board by T-REX [25, 26]. The T-REX framework receives the sensor data published by ROS, and deliberates about future states, plans for actions and executes generated activities while monitoring plans for anomalous conditions. Hence, plans are not scripted *a priori* but synthesized on-board with high-level directives instead of low-level commands. The adaptation algorithm presented in Algorithm 1 is implemented as a decision tool within T-REX for the intended planning purposes.

## 4.2 Field Trials

Field experiments were carried out near the harbor channel mouth in Moss Landing, CA, directly in front of the Monterey Bay Aquarium Research Institute (MBARI). To validate the utility of the algorithm based on an ability to ground truth results, and to eliminate the necessity of finding an actual ocean front, we chose to initially survey a pseudo-front. The chosen pseudo-front was defined to be a fixed depth contour of 30 feet along the edge of the Monterey Canyon. This provided a non-dynamic feature to examine and track for algorithm development and validation. Monterey Canyon, located at the center of Monterey Bay, is the largest submarine canyon along the coast of North America, and begins at the mouth of the harbor channel, see Fig. 4. By choosing a fixed depth, and zig-zagging across the canyon edge, we were able to conduct repeated experiments over a known feature for validation and ground truth of the proposed adaptation methodology.

The initial prior for the pseudo-front (canyon edge) was delineated by hand from existing bathymetry maps and from analyzing data collected from exploratory vehicle deployments within the region. This initial prior is shown as the curved, white line in Fig. 5. The initially computed path based on this prior as described in Section 3.1 is given by the red, zig-zag line in Fig. 5.

For all field deployments, the AUV started its mission at a fixed deployment location, then navigated on the surface of the water to the first waypoint of the path. Considering Fig 5, the first waypoint of the path is the one located the furthest East. The prescribed paths were traversed from this location heading westerly. During path execution, the AUV maintained a constant depth of 2 m from the surface for the entire mission. During the experiments presented in this paper, T-REX was operating and making decisions for plan adaptation, however these adaptations were not being passed down to ROS for execution during the mission. Thus, in the following section, we present the revised path as computed by T-REX for the mission as compared to ground truth data. We remark that the paths computed by T-REX that adapt the initial path to follow the pseudo-front were not executed by the vehicle in an in situ adaptive fashion. Hence, the adapted waypoints shown are predicted based on the previous three path segments implemented by the AUV. Had the on-board decisions been acted upon in situ the location of adapted waypoints 2, 3, ... would be slightly different, as the executed path segments would have been different from those actually executed.



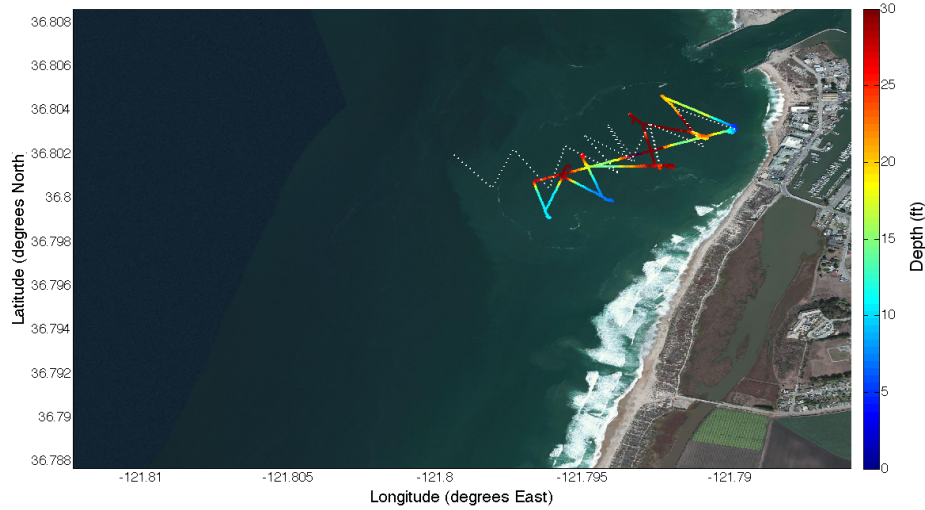


**Fig. 5.** A delineation of the chosen Monterey Canyon depth contour as the initial prior for the pseudo-front (white). The initially computed path for the AUV is the zig-zag path shown in red.

## 5 Results

During the experimental campaign, multiple missions were executed with the AUV. Initially, bathymetry data were gathered to generate the initial prior for the pseudo-front. Seven initial delineations for the initial prior were tested, and for each of these, the initial swath width of the zig-zags was varied from 50 m to 300 m. For the experimental results presented, the pseudo-front was set to coincide with a depth contour of 30 feet and the swath width for the initial path was set to 200 m. An example of the initially planned path and a sample execution of this path is shown in Fig. 6.

As previously noted, it was found that the proposed method is very sensitive to the initial conditions. This was evidenced through multiple experiments where the initial prior was positioned such that the initial path never crossed the prescribed depth contour. Since the vehicle never encountered the pseudo-front in this scenario, the adaptation process was never invoked. This was particularly the case for the narrower swath widths; those less than 100 m. Additionally, the choice of a depth contour as a pseudo-front was intended to eliminate variability and focus experiments on algorithm development and validation. However, since the average tidal flux in Monterey Bay is approximately 2 m, the location of the 30 m depth contour was a dynamically evolving boundary feature, even throughout a given day. For the bathymetric relief at the testing location, the location of the 30' contour was shown to move on the order of 10 m between



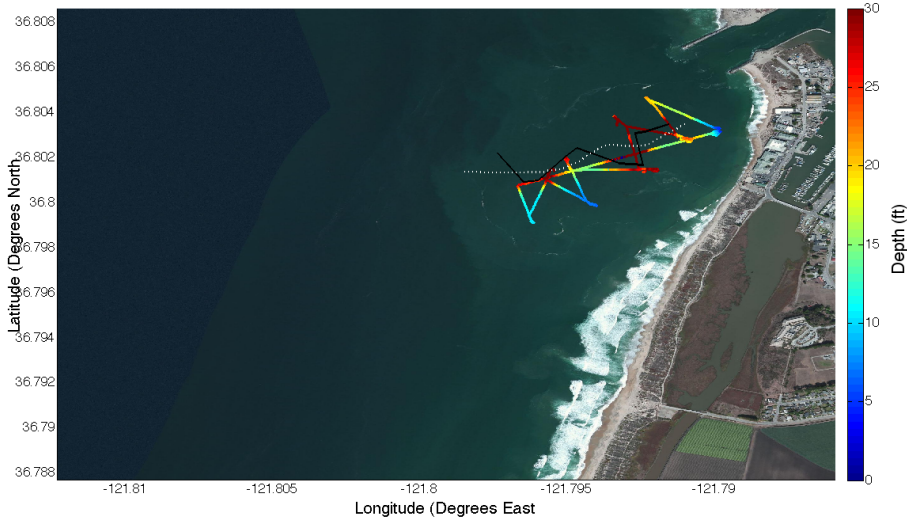
**Fig. 6.** Initial planned path (dashed white line) and the depth recorded along the path executed by the AUV (solid, multi-colored path) for the mission in Monterey Bay.

the MLLW and MHHW<sup>2</sup> levels. Thus, if the prior was delineated at one of these instances, and the experiment conducted during the other extreme we experienced a significant difference in frontal boundary location for a *seemingly* static feature. This is evidenced by noticing the difference in the observed/measured 30' depth contour in Figs. 8 and 9.

A representative set of depth data collected during a mission execution is presented in Fig. 7 as the multi-colored solid line. The initial prior used for this mission is overlaid as the white dashed line and the location of the 30' depth contour estimated from in situ data is given by the black line. Here we see that even with a *static* boundary, the initial prior is different from the detected location of the pseudo-front. Additionally, even if the frontal boundary and the initial prior coincided, the execution of the initially designed path is significantly different from what was prescribed. This is a typical result for an AUV dead-reckoning between prescribed waypoints [27, 28]. The combination of these two artifacts further motivates the necessity for in situ adaptation for AUVs to follow a static contour or a dynamically evolving feature.

In Figs. 8 and 9, we present the results from two separate field trials. Here, the initial prior and initially design path are the same for both experiments. The initially designed path is denoted by the white dashed line, with the estimated location of the pseudo-front given by the solid black line. The computed way-

<sup>2</sup> Mean Low Low Water (MLLW) and Mean High High Water (MHHW) levels are the averages of the lower low water height and higher high water height of each tidal day observed over the National Tidal Datum Epoch.

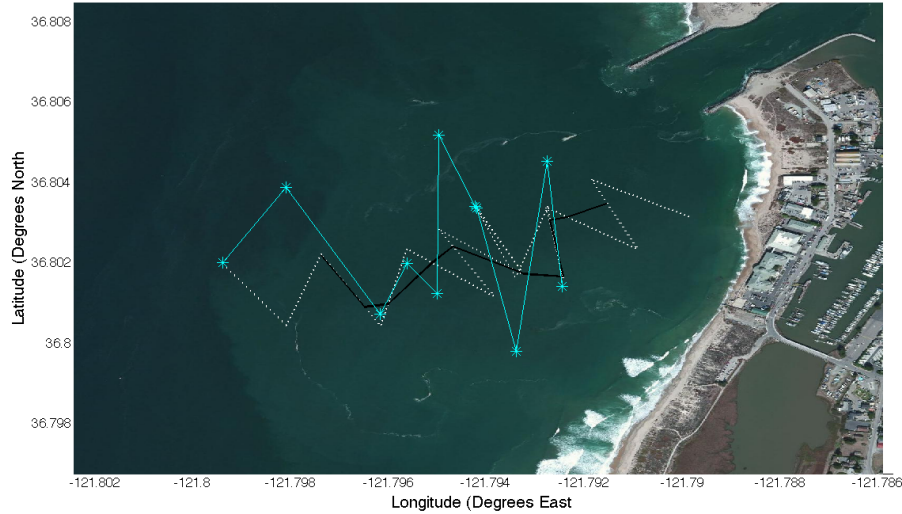


**Fig. 7.** The depth data collected along the path executed by the AUV (multicolored, zig-zag line) with the initial prior (white dashed line) and the location of the pseudo-front (solid black line), equal to the 30' depth contour, estimated from in situ data.

points are given by the cyan stars. For the adapted path (thin cyan line), we choose the initial waypoint to coincide with the current location of the vehicle at the first point the adaptation is invoked. The final waypoint of this path is fixed to the final waypoint of the initially designed path to ensure the vehicle a safe return home.

From the presented results, the initially planned path appears to achieve better results for tracking the prescribed contour. As the proposed algorithm is designed to be very conservative, assuming the frontal boundary is moving, and since this feature was relatively static, we expect that the initially designed path will perform well. Additionally, since the adaptation and computation of waypoints was done offline, and the vehicle was not adapting during the deployment, we must look at the previous three path segments *executed*; these form the basis for the subsequently predicted waypoint. Given this, we see that the predicted waypoints are a good guide for steering the AUV along a path that will definitely cross the frontal boundary. In each instance of adaptation, the frontal boundary would have been crossed if the AUV were to drive from its current location to the computed waypoint. This is not the case for the initially designed path, which does not cross the pseudo-front along each prescribed path segment. This is expected for static paths that attempt to track dynamic features or features that have uncertain evolution.

In Fig. 8 the 4<sup>th</sup> computed waypoint, and in Fig. 9, the 4<sup>th</sup> and 6<sup>th</sup> computed waypoints were revised and the path segment extended based on data collected



**Fig. 8.** Adapted waypoints predicted by the proposed algorithm (cyan stars) overlaid on the initially planned path (white dashed line) and the estimated pseudofront contour (solid black line).

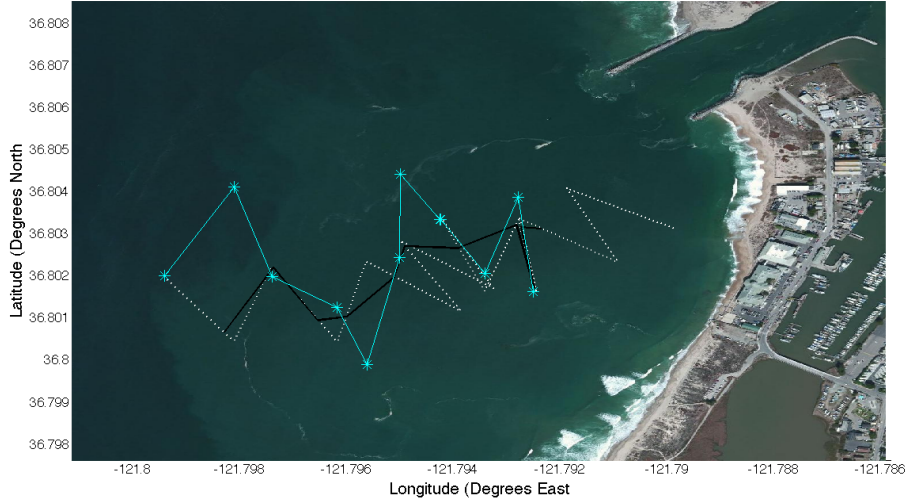
along the path after the initial computation. Here, T-REX decided that the AUV either had not encountered the front (prescribed 30' contour) or was not entirely through the boundary.

Comparing the initially designed path with the path defined by the computed waypoints, we notice that the adapted path traverses a longer distance. This is a result of the proposed algorithm acting very conservatively, to ensure that the frontal boundary is crossed. Additionally, the use of a cubic spline is likely overestimating the curvature of the pseudo-front, forcing T-REX to compute long path segments to cover all potential locations for the front.

## 6 Conclusions

In this paper, we have demonstrated a successful integration of ROS and T-REX on-board an EcoMapper AUV for adaptive, goal-oriented mission execution. This system was utilized to demonstrate an algorithm for tracking a frontal boundary with adaptive path planning based only on a prior delineation from remotely sensed data. Initial path plans were developed from priors and implemented during field trials. Data collected from field trials were acted upon by T-REX to adapt and re-plan, enabling the vehicle to follow a desired contour.

From the analysis of the performed experiments and algorithm implementation, the choice of a cubic spline to estimate the evolution of the frontal boundary



**Fig. 9.** Adapted waypoints predicted by the proposed algorithm (cyan stars) overlaid on the initially planned path (white dashed line) and the estimated pseudofront contour (solid black line).

needs to be re-evaluated. For the proposed pseudo-front and actual ocean fronts, a more gradual along-track gradient may be expected in practice. There exists a trade-off in the selection of the prediction tool and the conservative nature of the proposed algorithm. Proper selection is critical and depends on the actual front under study.

## 7 Future Work

The first step for future work is to allow T-REX to supply ROS with updated and adapted plans during field deployments. This study has shown that the developed algorithms work well to adapt to in situ data and enable the vehicle to follow a desired contour. An investigation into alternative spline tools or other prediction methods for front evolution will be the focus of forthcoming work. Currently, we are investigating the integration of ocean model predictions to inform the vehicle of how the frontal system has moved prior to the start of the survey, or how it is moving during the execution of the mission. Combining the ocean model predictions with the cubic spline estimations will provide a longer horizon for path planning and hopefully place the AUV in the *right place at the right time* to sample the frontal boundary. In future deployments, we aim to evaluate the utility of this method for sampling an actual ocean front. The difficulty here lies in the location and initial delineation of such a feature. As

presented in [2] the use of ocean model data for validation through simulations will be an initial step prior to field deployment.

## References

1. Olson, D., Hitchcock, G., Mariano, A., Ashjan, C., Peng, G., Nero, R., Podesta, G.: Life on the edge: marine life and fronts. *Oceanography* **7** (1994) 52 – 60
2. Reed, B., Hover, F.: Tracking ocean fronts with multiple vehicles and mixed communication losses. In: *Intelligent Robots and Systems (IROS), 2013 IEEE/RSJ International Conference on*. (Nov 2013) 3374–3381
3. Yuh, J.: Design and Control of Autonomous Underwater Robots: A Survey. *Autonomous Robots* **8** (2000) 7–24
4. Paley, D., Zhang, F., Leonard, N.: Cooperative control for ocean sampling: The glider coordinated control system. *IEEE Transactions on Control Systems Technology* **16**(4) (July 2008) 735–744
5. Smith, R.N., Schwager, M., Smith, S.L., Jones, B.H., Rus, D., Sukhatme, G.S.: Persistent ocean monitoring with underwater gliders: Adapting sampling resolution. *Journal of Field Robotics* **28**(5) (September/October 2011) 714 – 741
6. Smith, R.N., Das, J., Heidarsson, H., Pereira, A., Cetinić, I., Darjany, L., Ève Garneau, M., Howard, M.D., Oberg, C., Ragan, M., Schnetzer, A., Seubert, E., Smith, E.C., Stauffer, B.A., Toro-Farmer, G., Caron, D.A., Jones, B.H., Sukhatme, G.S.: USC CINAPS builds bridges: Observing and monitoring the Southern California Bight. *IEEE Robotics and Automation Magazine, Special Issue on Marine Robotics Systems* **17**(1) (March 2010) 20–30
7. Smith, R.N., Chao, Y., Li, P.P., Caron, D.A., Jones, B.H., Sukhatme, G.S.: Planning and implementing trajectories for autonomous underwater vehicles to track evolving ocean processes based on predictions from a regional ocean model. *International Journal of Robotics Research* **29**(12) (October 2010) 1475–1497
8. Smith, R.N., Das, J., Chao, Y., Caron, D.A., Jones, B.H., Sukhatme, G.S.: Cooperative multi-auv tracking of phytoplankton blooms based on ocean model predictions. In: *Proceedings of Oceans '10 - IEEE Sydney, Sydney, Australia* (May 2010) 1 – 10
9. Creed, E.L., Mudgal, C., Glenn, S., Schofield, O., Jones, C., Webb, D.C.: Using a fleet of slocum battery gliders in a regional scale coastal ocean observatory. In: *Oceans '02 MTS/IEEE*. (2002)
10. Garcia-Olaya, A., Py, F., Das, J., Rajan, K.: An Online Utility-Based Approach for Sampling Dynamic Ocean Fields. *IEEE Journal of Oceanic Engineering* **37**(2) (April 2012) 185–203
11. Singh, H., Yoerger, D., Bradley, A.: Issues in auv design and deployment for oceanographic research. In: *Proceedings of the 1997 IEEE International Conference on Robotics and Automation*. Volume 3. (1997) 1857–1862 Invited paper.
12. Fiorelli, E., Leonard, N., Bhatta, P., Paley, D., Bachmayer, R., Fratantoni, D.: Multi-auv control and adaptive sampling in monterey bay. *Oceanic Engineering, IEEE Journal of* **31**(4) (October 2006) 935–948
13. Zhang, Y., Godin, M., Bellingham, J., Ryan, J.: Ocean front detection and tracking by an autonomous underwater vehicle. In: *MTS/IEEE Oceans 2011*. (Sept 2011) 1–4
14. Zhang, Y., Godin, M.A., Bellingham, J.G., Ryan, J.P.: Using an autonomous underwater vehicle to track a coastal upwelling front. *IEEE Journal of Oceanic Engineering* **37**(3) (July 2012) 338 – 347

15. Zhang, Y., Bellingham, J., Ryan, J., Kieft, B., Stanway, M.: Two-dimensional mapping and tracking of a coastal upwelling front by an autonomous underwater vehicle. In: MTS/IEEE Oceans - San Diego. (Sept 2013) 1–4
16. Belkin, I.M., O'Reilly, J.E.: An algorithm for oceanic front detection in chlorophyll and SST satellite imagery. *Journal of Marine Systems* **78**(3) (2009) 319 – 326 Special Issue on Observational Studies of Oceanic Fronts.
17. Belkin, I.M., Cornillon, P.C., Sherman, K.: Fronts in large marine ecosystems. *Progress In Oceanography* **81**(1-4) (2009) 223 – 236 Comparative Marine Ecosystem Structure and Function: Descriptors and Characteristics.
18. Zhang, B., Sukhatme, G.S.: Adaptive sampling with multiple mobile robots. In: IEEE International Conference on Robotics and Automation (submitted). (2008)
19. Leonard, N.E., Paley, D.A., Davis, R.E., Fratantoni, D.M., Lekien, F., Zhang, F.: Coordinated control of an underwater glider fleet in an adaptive ocean sampling field experiment in monterey bay. *Journal of Field Robotics* **27**(6) (2010) 718–740
20. Das, J., Maughan, T., McCann, M., Godin, M., O'Reilly, T., Messie, M., Bahr, F., Gomes, K., Py, F., Bellingham, J., Sukhatme, G., Rajan, K.: Towards mixed-initiative, multi-robot field experiments: Design, deployment, and lessons learned. In: Proceedings of the Intelligent Robots and Systems (IROS) Conference, San Francisco (2011)
21. Gomes, K., Cline, D., Edgington, D., Godin, M., Maughan, T., McCann, M., O'Reilly, T., Bahr, F., Chavez, F., Messi, M., Das, J., Rajan, K.: ODSS: A decision support system for ocean exploration. In: Workshop on Data-Driven Decision Guidance and Support Systems (DGSS) at the 29th IEEE International Conference on Data Engineering, Brisbane, Australia (2013)
22. YSI Incorporated: YSI EcoMapper. <http://www.ysi.com/productsdetail.php?EcoMapper-41> (2014) Viewed May 2014.
23. Willow Garage: Robot operating system (ROS). <http://www.ros.org> (2007)
24. Quigley, M., Gerkey, B., Conley, K., Faust, J., Foote, T., Leibs, J., Berger, E., Wheeler, R., Ng, A.Y.: ROS: an open-source Robot Operating System. In: Proceedings of the Open-Source Software workshop of the International Conference on Robotics and Automation. (2009)
25. Rajan, K., Py, F.: T-REX: Partitioned Inference for AUV Mission Control. In Roberts, G.N., Sutton, R., eds.: Further Advances in Unmanned Marine Vehicles. The Institution of Engineering and Technology (IET) (August 2012)
26. Rajan, K., Py, F., Barreiro, J.: Towards Deliberative Control in Marine Robotics. In Seto, M., ed.: *Autonomy in Marine Robots*. Springer Verlag (2012)
27. Smith, R.N., Kelly, J., Chao, Y., Jones, B.H., Sukhatme, G.S.: Towards improvement of autonomous glider navigation accuracy through the use of regional ocean models. In: Proceedings of the 29th International Conference on Offshore Mechanics and Arctic Engineering, Shanghai, China (June 2010) 597–606
28. Smith, R.N., Kelly, J., Sukhatme, G.S.: Towards improving mission execution for autonomous gliders with an ocean model and kalman filter. In: Proceedings of the IEEE International Conference on Robotics and Automation, Minneapolis, MN (May 2012)