

Adaptive Path Planning for Tracking Ocean Fronts with an Autonomous Underwater Vehicle

Ryan N. Smith, Frederic Py, Kanna Rajan, and Gaurav Sukhatme

1 Motivation, Problem Statement, Related Work

An oceanic front is a narrow band of enhanced horizontal gradients of water properties (temperature, salinity, nutrients, etc.) dividing broader areas with different water masses or vertical structure. Fronts occur across a variety of spatial scales; along-frontal scales of 1 km to 10,000 km, cross-frontal scales of 10 m to 100 km, and vertical scales of 10 m to 1000 m. Temporal scales vary from days for transient fronts to millions of years for quasi-stationary, large-scale transoceanic fronts. Ocean fronts have been linked to elevated primary production and enhanced diversity of species; *hot spots* for marine life, across an astonishing spectrum of scales from plankton to whales. These frontal *hot spots* hold a wealth of information to improve our understanding of aquatic ecosystems in relation to climate change, however ocean fronts cannot be studied through conventional oceanographic techniques [1].

It is of interest to determine whether or not it is possible to develop a biological model for activity at or within an ocean front for ecological purposes. At the high level, we envision the scenario shown in Fig. 1, with the objective that coordinated observation between aerial, surface and underwater platforms are critical in observing dynamic biological phenomenon with varying spatial and temporal scales (from minutes to weeks and few sq. km to tens of sq. km). In this paper, we address the problem of sampling and tracking an ocean front with an Autonomous Underwater Vehicle (AUV) based on predictions and/or priors provided by the heterogeneous team of assets and ocean models. Specifically, given a prior (that is probably not accurate) can the AUV adapt its mission to find and track a dynamic feature?

Robotic platforms hold the promise of a revolution in ocean sampling. Considerable study has been reported on control design for

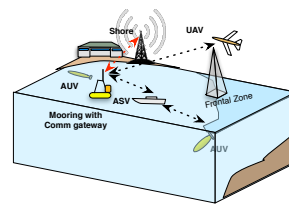


Fig. 1. An envisioned scenario in the near future, with the use of AUVs, autonomous surface and aerial platforms finding, tracking and sampling frontal zones.

R.N. Smith is with the Physics and Engineering Department, Fort Lewis College, Durnago, CO, USA, email: rnsmith@fortlewis.edu

F. Py and K. Rajan are with the Monterey Bay Aquarium Research Institute, Moss Landing, CA USA, email: kanna.rajan, fpy@mbari.org

G.S. Sukhatme is with the Robotic Embedded Systems Laboratory and the Dept. of Computer Science, University of Southern California, Los Angeles, CA 90089 USA e-mail: gaurav@usc.edu

AUVs for adaptive ocean sampling and coordinated control of multi-vehicle systems, [2–8]. Applications of ocean sampling techniques for AUVs are discussed in [9, 5, 6], with ocean front perception detection addressed in [10]. Along with steering an AUV to the right locations, research exists in the area of static sensor placement to maximize knowledge return, [11]. Existing methods are currently all based on a geographical coordinate system, i.e., latitude and longitude. However, the definition of geographical space is ill-defined in the ocean and complex ocean dynamics make geographic-relative navigation difficult, specifically when tracking dynamic and episodic events. Sampling at uniformly distributed geographic coordinates can generate a suboptimal distribution of samples given the dynamic nature of the oceans’ water masses. Some results have used information-based metrics and machine learning to optimally determine a path or sensor placement based on reduction of overall covariance of the scalar field in question. Recent work in [2] begins to address this issue, but approaches the problem from a multiple underwater vehicle point-of-view with constraints on communication among the fleet. Here, we enable in situ robotic adaptation for a single vehicle to environmental conditions based on real-time measurements for targeted sampling.

2 Technical Approach

For this research, field experiments were carried out in Monterey Bay, California with a YSI EcoMapper AUV [12], Fig. 2.



Fig. 2. The YSI EcoMapper Vehicle.

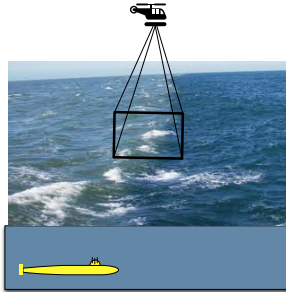


Fig. 3. A schematic of the survey problem.

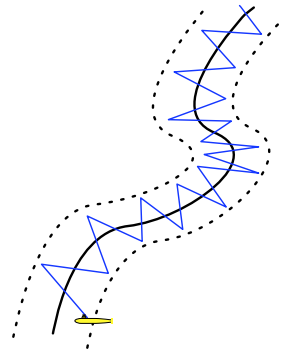


Fig. 4. Representation of the initially computed survey path.

We assume that the vehicle is provided with a prior estimation characterizing the location of an ocean front from an Unmanned Aerial Vehicle (UAV), Fig 3. This prior was given as a KML file as was assumed to be temporally latent and inaccurate. The KML file was used as the input to plan an initial path to survey the *observed* ocean front. As it is assumed that the front has moved since the

observation, the initial path plan is very conservative with regard to the spatial footprint of the front. From the observation from the UAV, we parameterize the boundary of the front to a curvilinear line in 2D. We assume that a front can be represented as a continuously-differentiable function, i.e., \mathcal{C}^1 . The initial path plan is computed on-board the AUV be a regular, zig-zag pattern, crossing the frontal boundary with a predefined swath width, Fig. ???. Assuming the speed over ground of the vehicle is constant, we vary the speed along the parameterized frontal boundary by expanding or contracting the size of the zig-zags, similar to what was done in [5]. Here we rotate the planning method 90° to generate zig-zag paths in the horizontal plane, where the degree of compression of each zig-zag is proportional to the inverse of the derivative (curvature) of the parameterized boundary at each location. Specifically, in areas of low curvature we achieve regular sampling, and in areas of high curvature, we perform higher density sampling to accurately resolve the changes.

The adaptation of the sampling path occurs incrementally as the vehicle follows and samples within the front. The low-level functionality of navigation to a specified location is handled through a ROS interface on-board the vehicle. The high-level decision of plan synthesis is executed on-board by the Teleo-Reactive EXecutive (T-REX) [13]. For each transect (T_i) that crosses through the front, T-REX perceives and records the location (l_i) of the frontal boundary based on a technique similar to that presented in [10].

To begin, the vehicle executes the first three transects of the initially computed path. During this phase, T-REX allows the vehicle to continue past a prescribed waypoint if it perceives that the vehicle is still within the front, and allows the vehicle to stop early if it perceives that the vehicle has already exited the front. These initial frontal boundary locations, l_i for $i = 1, 2, 3$ are input into a cubic spline algorithm that estimates the most likely location of the frontal boundary. T-REX then generates the next waypoint based on this estimated location. This process is iterated until the front is no longer detected. After the execution of the initial three waypoints, the path planning is simply determining a vehicle heading based on predicted curvature of the frontal boundary, while the length of the trajectory is determined by in situ sampling.

3 Experiments

Experiments were carried out near the harbor channel mouth in Moss Landing, CA, directly in front of the Monterey Bay Aquarium Research Institute (MBARI). To validate the utility of the algorithm based on an ability to ground truth results, we chose depth as a non-dynamic pseudo-front to examine and track. Monterey Canyon, located at the center of Monterey Bay, is the largest submarine canyon along the coast of North America, and begins at the mouth of the harbor channel, see Fig. 5. This artifact provided a reliable feature to track, using depth as the *scientific* measurement, rather than chlorophyll, temperature, or salinity. The initial prior for the canyon edge is shown in Fig. 6.

¹ A discontinuity is assumed to represent two different fronts, and ocean physics negate the possibility of non-differentiable locations along a front.

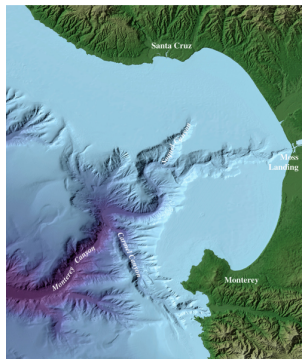


Fig. 5. Relief of the Monterey Canyon.

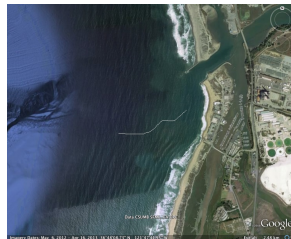


Fig. 6. Delineation of the Monterey Canyon edge as the initial prior for the pseudo-front.

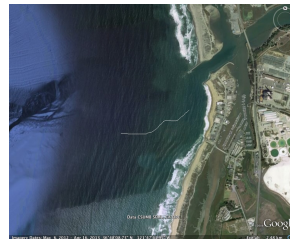


Fig. 7. Placeholder image for the initially computed path figure.

This was delineated by hand from existing bathymetry maps and from analyzing data collected from vehicle deployments in the region. The initially computed path is presented in Fig. 7.

The AUV started at the location designated in Fig. 7, navigated on the surface of the water to the first waypoint of the path, and then executed the prescribed path at a constant depth of 2 m from the surface. During the experiments, the T-REX was operating and making decisions, but was not pushing these decisions down to ROS for execution during the mission execution. Thus, we have the revised path as computed by T-REX for the mission to compare with ground truth data, however that path was not executed by the vehicle in an in situ adaptive fashion.

4 Results

The experiment was executed multiple times with different delineations for the initial prior of the front. The frontal boundary was set to coincide with a depth of 6 m. An example execution of the initial path is shown in Fig. 8. The adjusted path is defined by the waypoints shown in Fig. 9. Although we were not executing the adaptively computed path, we demonstrate that we are able to follow a prescribed contour with on-board computation. A comparison of the depth contours in Monterey Bay with the 6 m contour as computed by our on-board algorithm is presented in Fig. 10.

5 Main Experimental Insights

Thus far, we have carried out field trials to execute a prescribed path based on a prior delineation of a frontal boundary. We have demonstrated that we



Fig. 8. Depth recorded during the execution of the mission in Monterey Bay.



Fig. 9. Placeholder for the figure with recomputed waypoints.



Fig. 10. Depth recorded during the execution of the mission in Monterey Bay.

can compute new commands to follow a desired contour on-the-fly through and integration of ROS and T-REX. Some preliminary results are summarized as follows.

1. We have demonstrated a successful integration of ROS and T-REX on-board an autonomous underwater vehicle for adaptive, goal-oriented mission execution.
2. We have presented an algorithm for tracking a frontal boundary with adaptive path planning based only on a prior delineation from remotely sensed data.
3. It was initially thought that a plume or front could be detected emerging from the harbor on a regular interval associated with the tidal cycle. This was the case, but without an aerial vehicle, or other method, to provide the initial (georeferenced) prior, computing an appropriate initial path proved very difficult.

Currently, we are investigating the integration of ocean model predictions to inform the vehicle of how the frontal system has moved prior to the start of the survey, or how it is moving during the execution of the mission. Combining the ocean model predictions with the cubic spline estimations will provide a longer horizon for path planning and hopefully place the AUV in the right place at the

right time to sample the frontal boundary. In future work, we aim to evaluate the utility of this method for sampling an actual ocean front. The difficulty here lies in the location and initial delineation of such a feature. As presented in [2] the use of ocean model data for validation through simulations will be an initial step prior to field deployment.

References

1. Olson, D., Hitchcock, G., Mariano, A., Ashjan, C., Peng, G., Nero, R., Podesta, G.: Life on the edge: marine life and fronts. *Oceanography* **7** (1994) 52 – 60
2. Reed, B., Hover, F.: Tracking ocean fronts with multiple vehicles and mixed communication losses. In: *Intelligent Robots and Systems (IROS), 2013 IEEE/RSJ International Conference on*. (Nov 2013) 3374–3381
3. Yuh, J.: Design and Control of Autonomous Underwater Robots: A Survey. *Autonomous Robots* **8** (2000) 7–24
4. Paley, D., Zhang, F., Leonard, N.: Cooperative control for ocean sampling: The glider coordinated control system. *IEEE Transactions on Control Systems Technology* **16**(4) (July 2008) 735–744
5. Smith, R.N., Schwager, M., Smith, S.L., Jones, B.H., Rus, D., Sukhatme, G.S.: Persistent ocean monitoring with underwater gliders: Adapting sampling resolution. *Journal of Field Robotics* **28**(5) (September/October 2011) 714 – 741
6. Smith, R.N., Das, J., Heidarsson, H., Pereira, A., Cetinić, I., Darjany, L., Ève Garneau, M., Howard, M.D., Oberg, C., Ragan, M., Schnetzer, A., Seubert, E., Smith, E.C., Stauffer, B.A., Toro-Farmer, G., Caron, D.A., Jones, B.H., Sukhatme, G.S.: USC CINAPS builds bridges: Observing and monitoring the Southern California Bight. *IEEE Robotics and Automation Magazine, Special Issue on Marine Robotics Systems* **17**(1) (March 2010) 20–30
7. Smith, R.N., Chao, Y., Li, P.P., Caron, D.A., Jones, B.H., Sukhatme, G.S.: Planning and implementing trajectories for autonomous underwater vehicles to track evolving ocean processes based on predictions from a regional ocean model. *International Journal of Robotics Research* **29**(12) (October 2010) 1475–1497
8. Smith, R.N., Das, J., Chao, Y., Caron, D.A., Jones, B.H., Sukhatme, G.S.: Cooperative multi-aUV tracking of phytoplankton blooms based on ocean model predictions. In: *Proceedings of Oceans '10 - IEEE Sydney, Sydney, Australia* (May 2010) 1 – 10
9. Singh, H., Yoerger, D., Bradley, A.: Issues in aUV design and deployment for oceanographic research. In: *Proceedings of the 1997 IEEE International Conference on Robotics and Automation*. Volume 3. (1997) 1857–1862 Invited paper.
10. Zhang, Y., Bellingham, J.G., Godin, M.A., Ryan, J.P.: Using an autonomous underwater vehicle to track the thermocline based on peak-gradient detection. *IEEE Journal of Oceanic Engineering* **37**(3) (July 2012) 544 – 553
11. Zhang, B., Sukhatme, G.S.: Adaptive sampling with multiple mobile robots. In: *IEEE International Conference on Robotics and Automation* (submitted). (2008)
12. YSI Incorporated: Ysi ecomapper. <http://www.ysi.com/productsdetail.php?EcoMapper-41> (2010) Viewed August 2010.
13. McGann, C., Py, F., Rajan, K., Thomas, H., Henthorn, R., McEwen, R.: T-REX: A Deliberative System for AUV Control. In: *3rd Workshop on Planning and Plan Execution for Real-World Systems, ICAPS, Providence, RI* (2007)