

# Glider Path-Planning for Optimal Sampling of Mesoscale Eddies

Daniel Hernandez<sup>1</sup>, Ryan Smith<sup>2</sup>, Enrique Fernandez<sup>1</sup>, Josep Isern<sup>1</sup>, Jorge Cabrera<sup>1</sup>, Antonio Dominguez<sup>1</sup>, and Victor Prieto<sup>1</sup> \*

<sup>1</sup>SIANI, ULPGC, Spain,

<sup>2</sup>QUT, Australia

## Extended abstract

Ocean gliders constitute an important advance in the highly demanding ocean monitoring scenario. Their efficiency, endurance and increasing robustness make these vehicles an ideal observing platform for many long term oceanographic applications [1]. However, they have proved to be also useful in the opportunistic short term characterization of dynamic structures. Among these, mesoscale eddies are of particular interest due to the relevance they have in many oceanographic processes.

Path planning plays a main role in glider navigation [2] as a consequence of the special motion characteristics these vehicles present. Indeed, ocean current velocities are comparable to or even exceed a glider's low speed, typically around 1 km/h (0.28 m/s). In such situations a feasible path must be prescribed to make the glider reach the desired destination. This can be accomplished by analyzing the evolution of the ocean currents predicted by a numerical model. The problem is not trivial, as the planner must take into account a 4D, spatiotemporally-varying field over which to optimize.

Different solutions to the glider path planning problem can be found in the literature. Inanc et al. [3] propose a method that applies Nonlinear Trajectory Generation (NTG) on a Lagrangian Coherent Structures (LCS) model to generate near-optimal routes for gliders on dynamic environments. Alvarez et al. [4] use Genetic Algorithms to produce suitable paths in presence of strong currents while trying to minimize energy consumption. Other authors have put the focus on the coordination of glider fleets to define optimal sampling strategies [5].

In the particular case of eddies, the complexity of the path planning scenario is aggravated by the high spatio-temporal variability of these structures and their specific sampling requirements [6]. Garau et al. [7] use an A\* search algorithm to find optimal paths over a set of eddies with variable scale and dynamics. Smith et al. [8] propose an iterative optimization method based on the Regional Ocean Modeling System (ROMS) predictions to generate optimal tracking and sampling trajectories for evolving ocean processes. Their scheme includes near real-time data assimilation and has been tested both in simulation and real field experiments.

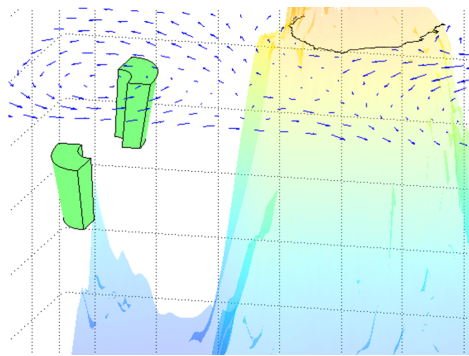
---

\* Partially supported by Canary Islands Government and FEDER funds (project PI 2010-0062), and the DIS department at ULPGC

In the present work we propose a method for generating glider trajectories that optimize the sampling of eddy structures based on the given objective functions and the predictions available from MyOcean-IBI ROM maps. The Canary Islands eddies system originates, according to Jimenez et al. [9], from a combination of wind and topographic forcing. In our method we use a discretized version of the eddy model proposed by these authors, dividing the structure volume into several sectors rotating at different velocities. Each sector is defined by its min/max limits in depth, radius and angle dimensions (see figure 1).

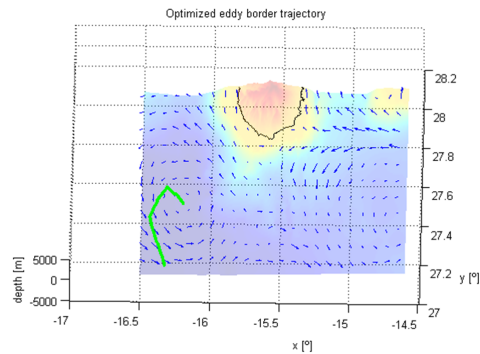
Our proposal structures the path planning in three phases: identification of eddy model parameters, definition of objective function and path generation. As a first phase, the eddy parameters are identified combining the current, altimetry and temperature maps in a semi-automatic process. MyOcean-IBI provides 3D ocean current outputs only as daily mean maps, so we combine these with the hourly outputs to allow for a better description of the eddy dynamics. The eddy center and border are marked manually on the SSH maps and then refined using the current and temperature maps.

In the second phase, the objective function is expressed in terms of the eddy sectors that should be sampled and the desired mission duration. This scheme allows to define different sampling strategies such as track eddy center, focus in the border, maximize sampled volume, etc. Finally, in the last phase, a Genetic Algorithm optimization is applied in order to obtain the trajectory that best meets the specifications. A smoothness factor can be also incorporated in the optimization to penalize sharp turns in glider's path.



**Fig. 1.** Examples of eddy volume segmentation.

We have performed several simulations for Canary Islands eddies using MyOcean-IBI prediction maps to test the validity of the proposal. In the figure 2, a 5 days trajectory optimized for an eddy border is shown. Our intention is to additionally test the method using maps from the southern California System and also execute some real field trials.



**Fig. 2.** Example of optimized trajectory for eddy border.

## References

1. Rudnick, D.L., Davis, R.E., Eriksen, C.C., Fratantoni, D.M., Perry, M.J.: Underwater gliders for ocean research. *Marine Technology Society Journal* **38**(2) (2004) 73–84
2. Davis, R.E., Leonard, N.E., Fratantoni, D.M.: Routing strategies for underwater gliders. *Deep Sea Research Part II: Topical Studies in Oceanography* **56** (February 2009) 173–187
3. Inanc, T., Shadden, S.C., Marsden, J.E.: Optimal trajectory generation in ocean flows. In: *In Proc. American Control Conf.* 674679. (2004)
4. Alvarez, A., Caiti, A., Onken, R.: Evolutionary path planning for autonomous underwater vehicles in a variable ocean. *IEEE Journal of Oceanic Engineering* **29**(2) (2004) 418–429
5. Leonard, N.E., Paley, D.A., Davis, R.E., Fratantoni, D.M., Lekien, F., Zhang, F.: Coordinated control of an underwater glider fleet in an adaptive ocean sampling field experiment in monterey bay. *Journal of Field Robotics* **27**(6) (2010) 718–740
6. Hátún, H., Eriksen, C.C., Rhines, P.B.: Buoyant Eddies Entering the Labrador Sea Observed with Gliders and Altimetry. *Journal of Physical Oceanography* **37** (2007) 2838–2854
7. Garau, B., Alvarez, A., Oliver, G.: Path Planning of Autonomous Underwater Vehicles in Current Fields with Complex Spatial Variability: an A\* Approach. In: *International Conference on Robotics and Automation.* (2005) 194–198
8. Smith, R.N., Chao, Y., Li, P.P., Caron, D.A., Jones, B.H., Sukhatme, G.S.: Planning and implementing trajectories for autonomous underwater vehicles to track evolving ocean processes based on predictions from a regional ocean model. *International Journal of Robotics Research* **29** (2010) 1475–1497
9. Jimenez, B., Sangra, P., Mason, E.: A numerical study of the relative importance of wind and topographic forcing on oceanic eddy shedding by tall, deep water islands. *Ocean Modelling* **22**(3) (2008) 146–157