

# Automated Mapping and Exploration

Amit Dhariwal<sup>1</sup>, Arvind Pereira<sup>1</sup>, Jnaneshwar Das<sup>1</sup>, Bin Zhang<sup>1</sup>, Beth Stauffer<sup>2</sup>, Lindsay Darjany<sup>2</sup>, Xuemei Bai<sup>2</sup>, Carl Oberg<sup>1</sup>, David Caron<sup>2</sup>, Gaurav S. Sukhatme<sup>1</sup>

<sup>1</sup>Robotic Embedded Systems Laboratory, Department of Computer Science, <sup>2</sup>Caron Lab, Department of Marine Environmental Biology

University of Southern California <http://robotics.usc.edu/~namos/>

## Automated 3D Bathymetric Mapping and Efficient Exploration

### Construct high resolution 3D maps of aquatic environments

- Accurate mapping of aquatic environments is important for both human activities and for marine scientists
- Mapping challenges – Navigational, sensor & dynamic modeling errors.

### Application Areas

- Marine Environmental Biology
  - Obtain volume information to estimate biomass
  - Estimate biomass changes due to tidal flow and cycling
  - Obtain depth profile to select areas of interest (for further biological exploration)
- Marine Navigation
  - Plan safe paths for marine vessels
- Search
  - Locate objects of interest

## Problem : Efficient Exploration for generation of high resolution 3D Bathymetric Maps

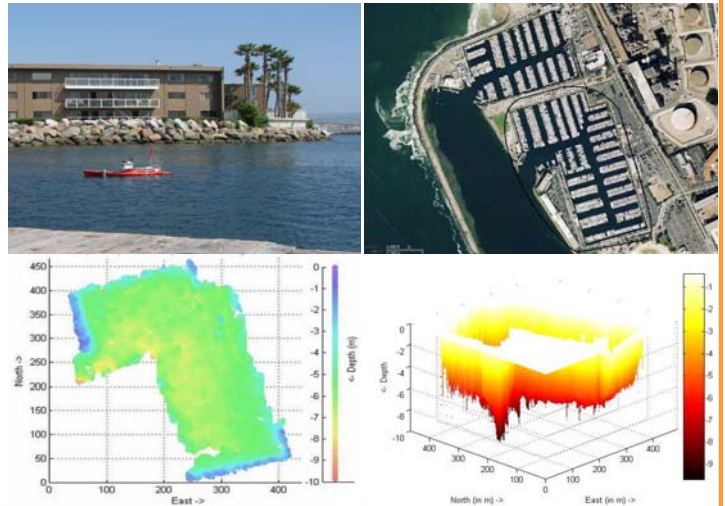
- Robotic boat
  - Equipped with a Global Positioning System (GPS), Inertial Measurement Unit (IMU) and a profiling sonar
  - Autonomous navigation capability
- Build a bathymetric map of a given water body
  - Classify portions of volume as unobstructed (water) or occupied (floor or obstacle)
- Explore the water body efficiently
  - Constraints on time, energy and boat dynamics
  - Path planning
  - Efficiency metrics
    - Uncertainty of the complete map vs. time
    - Explored volume vs. time



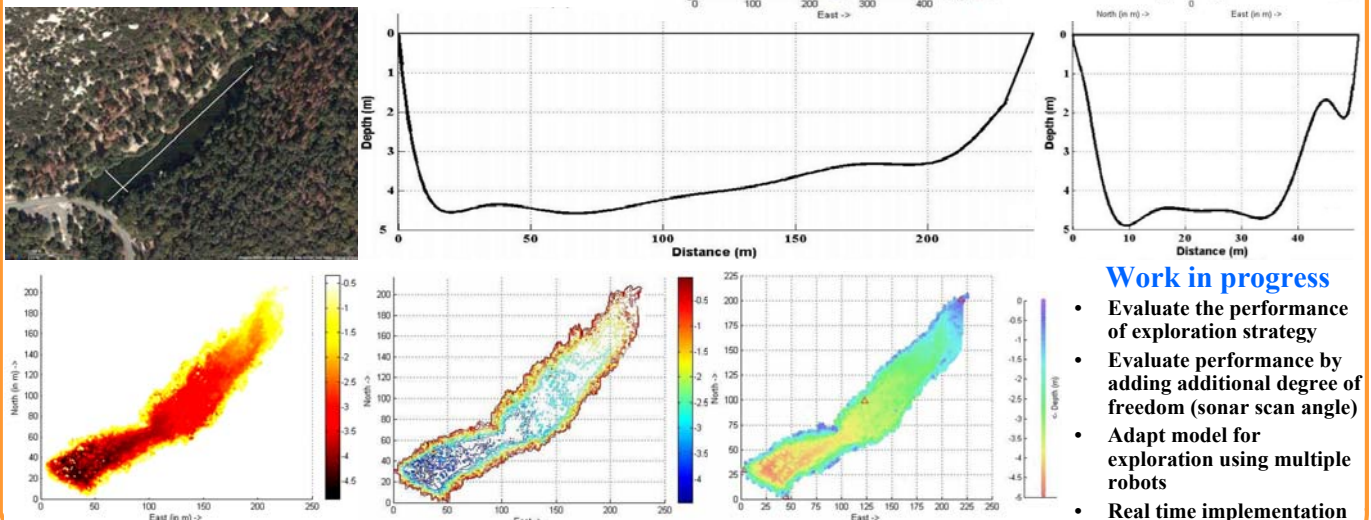
## Proposed Solution: Priority Exploration of Regions with Higher Expected Information Gain

- Mapping Strategy
  - 3-D grid based representation of the water volume
  - State of grid occupancy is represented using a probability distribution  $P(x) \in [0,1]$
  - Integrate Sonar data into the map
- Exploration strategy
  - For each grid location  $x$ , compute the uncertainty in the knowledge about its occupancy. This will be the *maximum information gain* on exploring the location:
 
$$IG(x) = -p(x)\log p(x) - (1-p(x))\log(1-p(x))$$
  - Determine unexplored frontiers ( $i$ ) and compute the expected information gain on visiting and exploring them
  - Select frontier which maximize the cost function:
 
$$\arg \max_{i \in \text{frontier}} \{K_1 * IG_i + K_2 * f(\text{distance, time, } IG_{\text{path}})\}$$
  - Plan the most efficient path to frontier
  - Repeat until all areas are explored or {distance, time, energy} limit is reached

### Results from Redondo Harbor



### Results from James Reserve



### Work in progress

- Evaluate the performance of exploration strategy
- Evaluate performance by adding additional degree of freedom (sonar scan angle)
- Adapt model for exploration using multiple robots
- Real time implementation on the robotic boat