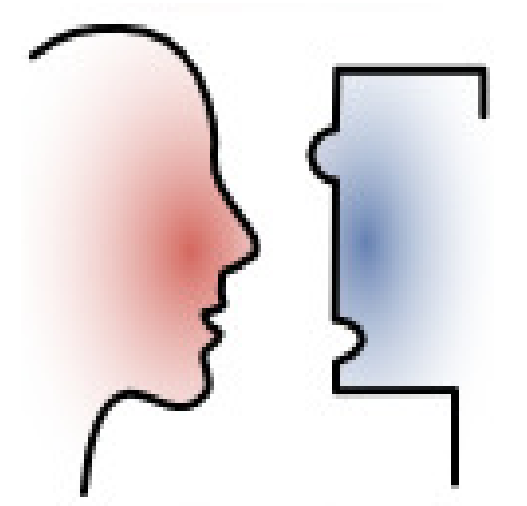


Robot Exercise Instructor: A Socially Assistive Robot System to Monitor and Encourage Physical Exercise for the Elderly

Juan Fasola and Maja Matarić
fasola@usc.edu | mataric@usc.edu



Socially Assistive Robotics (SAR) is an area of Human-Robot Interaction (HRI) that focuses on aiding through social rather than physical interaction between the robot and a human user, and has the potential to enhance the quality of life for large user populations, including the elderly, people with physical impairments and those involved in rehabilitation therapy (e.g., post-stroke patients).

Research Goals

The specific aims of the work presented were as follows:

- 1) To create a socially assistive robot capable of interacting with elderly users in an exercise scenario, while providing feedback, praise, and motivation throughout.
- 2) To conduct a study with elderly participants to test the feasibility and effectiveness of our system design, as well as to gain insight into the role of user autonomy and choice within the exercise scenario.
- 3) To get feedback from the participants for the purpose of improving the system design.

Robot Exercise System

- Socially assistive robot whose purpose is to instruct, evaluate, and encourage users to perform simple seated arm gesture exercises (“chair exercises”)
- One-on-one, allowing robot to focus attention on the single user to provide timely, accurate feedback, and to maximize the effectiveness of the exercise session for the user
- Black curtain backdrop used to facilitate visual recognition of the user’s arm gestures
- User communicates with robot through wireless controller (“Yes”, “No”, “Break” buttons)



Exercise Games

Workout:

- Robot fills role of traditional exercise instructor by showing the user which arm gesture exercises to perform, by demonstrating with its own arms, and asking the user to imitate
- Real-time feedback (e.g. “Raise your left arm and lower your right arm”)
- Praise (e.g. “Great job!” or “Now you’ve got the hang of it”)

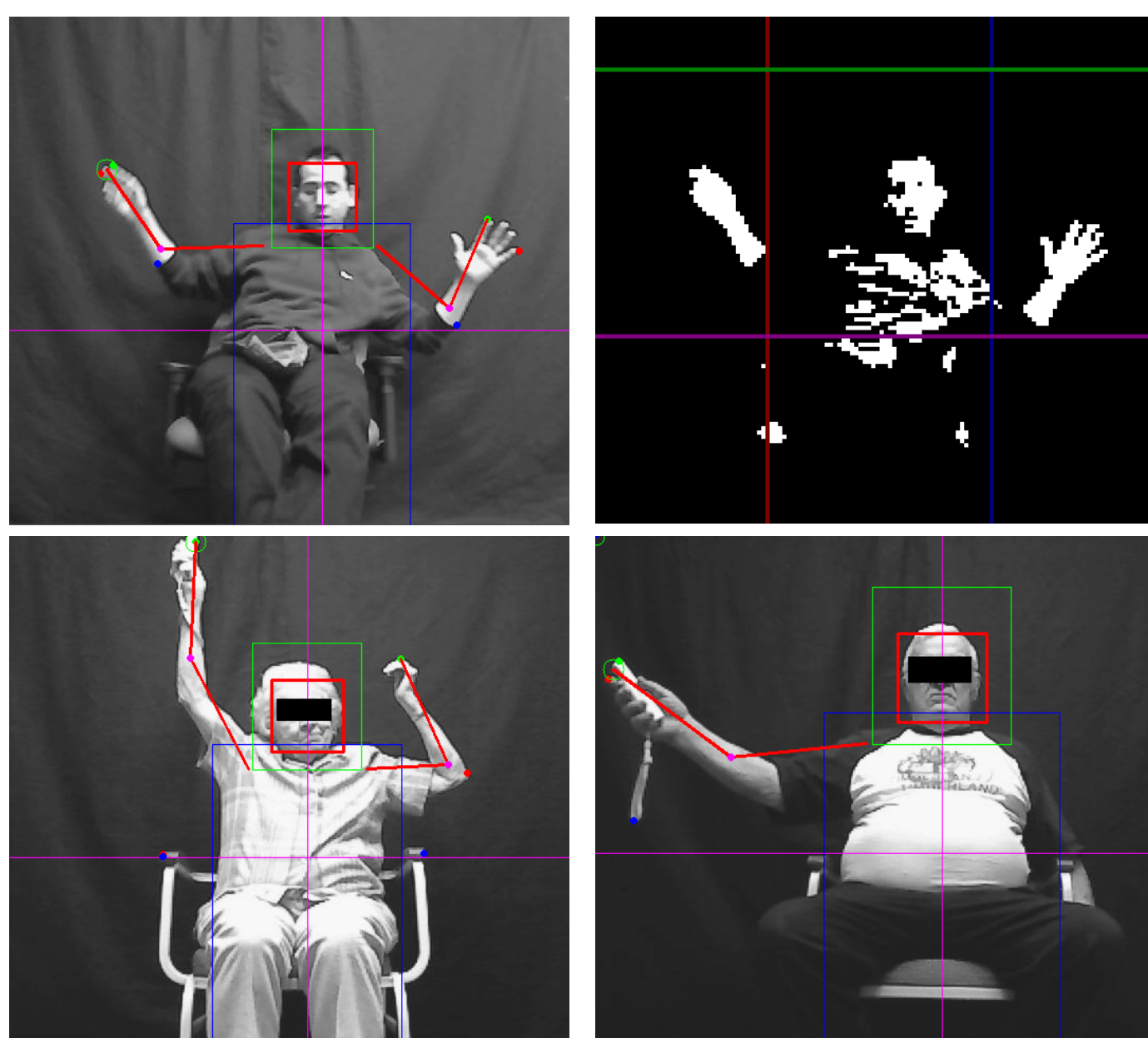
Imitation:

- User is exercise instructor, showing robot what to do
- Robot encourages user to create his/her own arm gesture exercises
- Robot performs real-time imitation of user
- General comments (e.g. “You’re a good instructor Mary” or “This is my favorite game, thanks for the workout”)

Memory:

- User is challenged to learn a lengthy sequence of arm gestures
- Goal is for user to remember as many gestures as possible
- Robot reports user’s high score to motivate improvement
- Robot helps the user keep track of the sequence by counting along with each correct gesture, and reminding the user of the poses when it detects errors (e.g. “Oh that’s too bad! Here again is gesture five”).

Vision Module



Study Conditions

- 1) *Choice Condition*: The user is given the choice of which game to play at specific points in the interaction.
- 2) *No Choice Condition*: The robot chooses which of the three games to play at the specified game change intervals (every one to two minutes).

Hypotheses:

- After the first session, no significant difference will be found among the participants’ preferences for either conditions
- After last session, users will prefer Choice condition over No Choice

Robot Platform

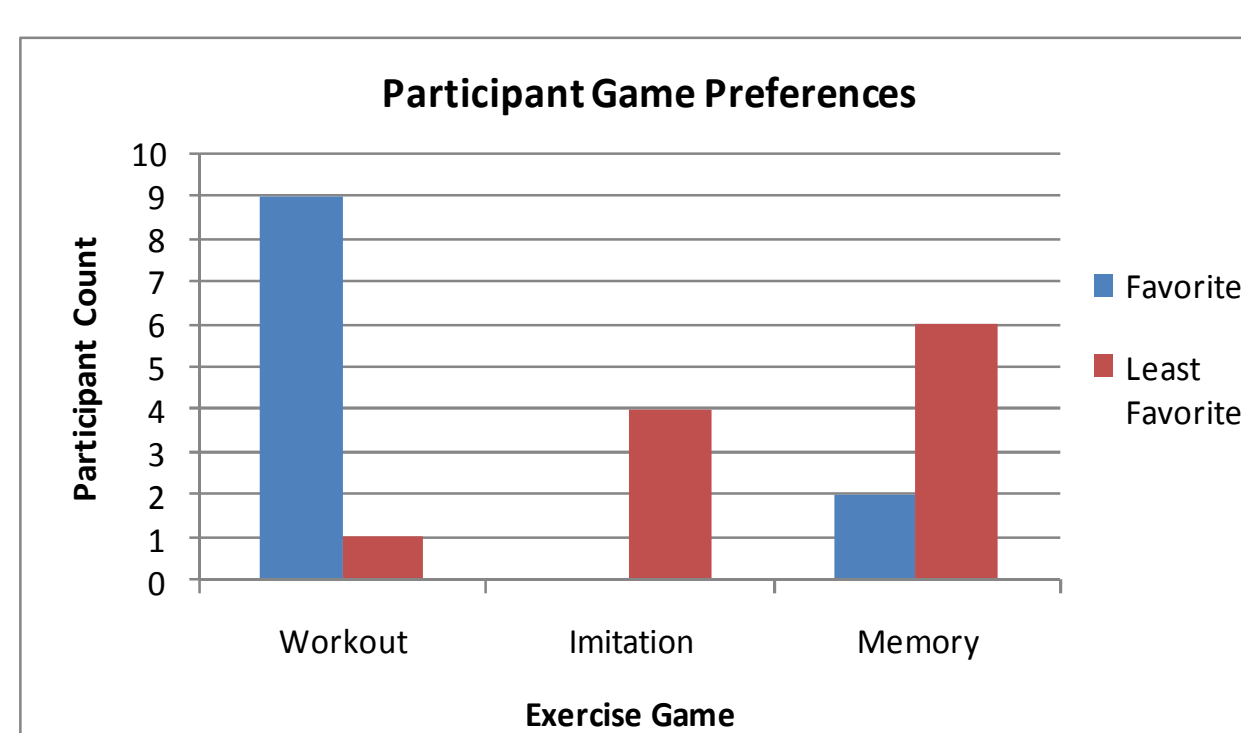
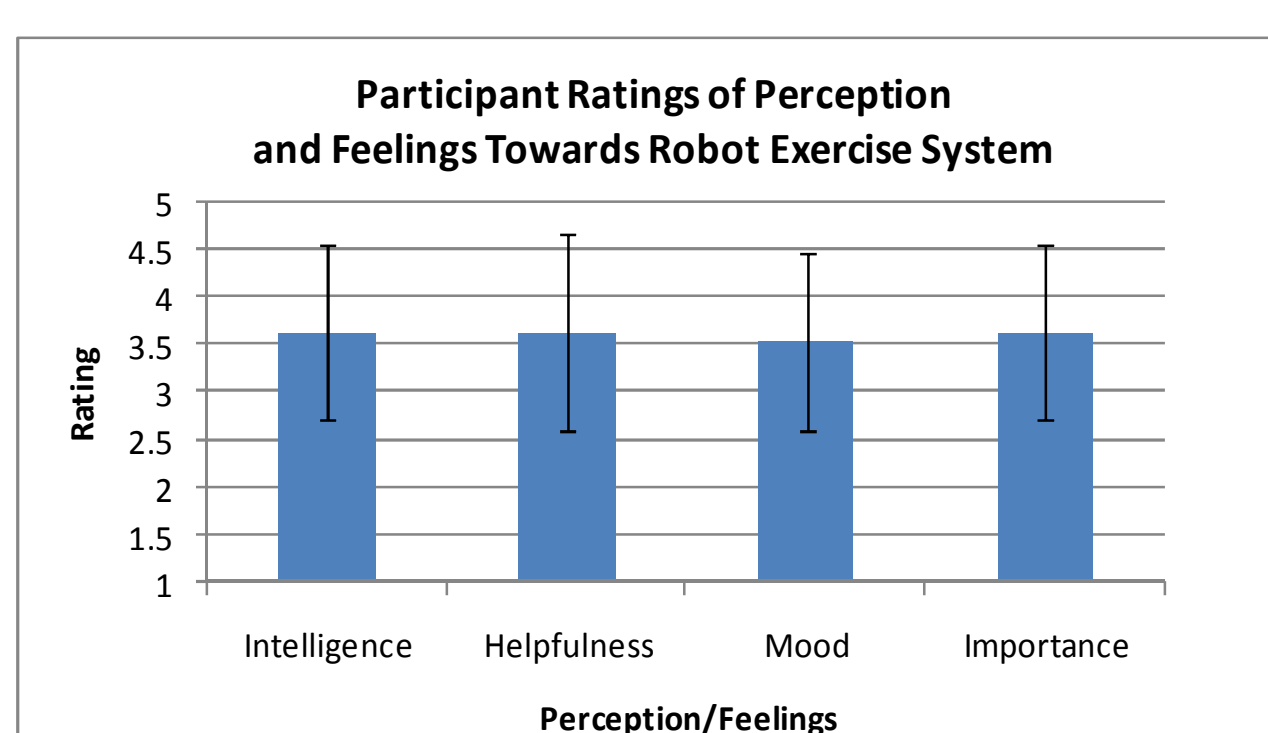
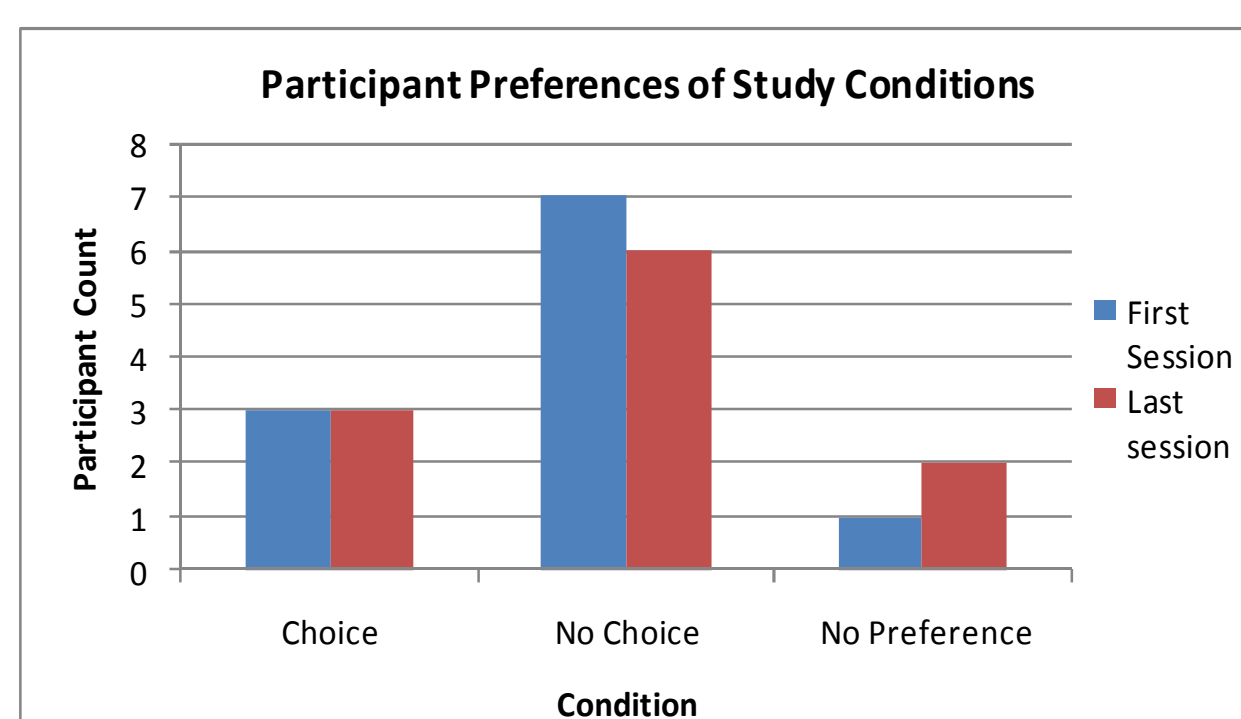


Bandit II

- Biomimetic anthropomorphic robot: expressive humanoid robot torso, mounted on a Pioneer mobile base
- 19 DOF and expressive face: 7 DOF in each arm, 2 in the neck, 2 in mouth, and 1 in each eyebrow
- USB camera for visual input
- Text-to-speech for verbal communication with user

Pilot Experiment Results

- 11 participants were recruited to participate in both conditions of the study
- 4 sessions total in 2 week period
- 10 female, 1 male, all over age of 65
- Order of conditions randomized
- Participants given survey at end of first, and last session



Discussion and Future Work

- 10/11 participants reported increased enjoyment when given the opportunity to choose which game to play, even though most participants preferred the No Choice condition
- All participants took advantage of choice at some point during their sessions, by continuing to play same game multiple times, or by avoiding playing a game
- Results of study show potential of robot exercise system, as the participants rated the robot highly in terms of intelligence and helpfulness, reported their mood to be normal-pleased during the sessions, and gave importance to the exercise sessions
- Future work includes studying the role of physical embodiment, by comparing the effectiveness of a physical robot to that of a computer simulation, and also expanding the length of the study to investigate the long-term effectiveness of the robot.