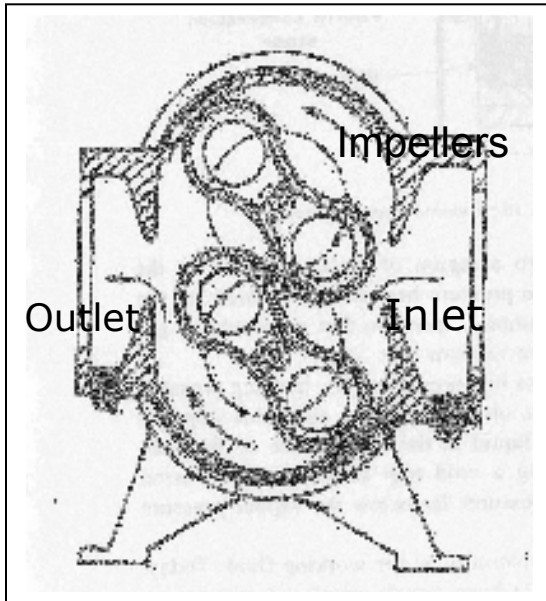


Roots Pumps

Roots pumps are a class of dry pumps used without any oil or lubricating fluid.

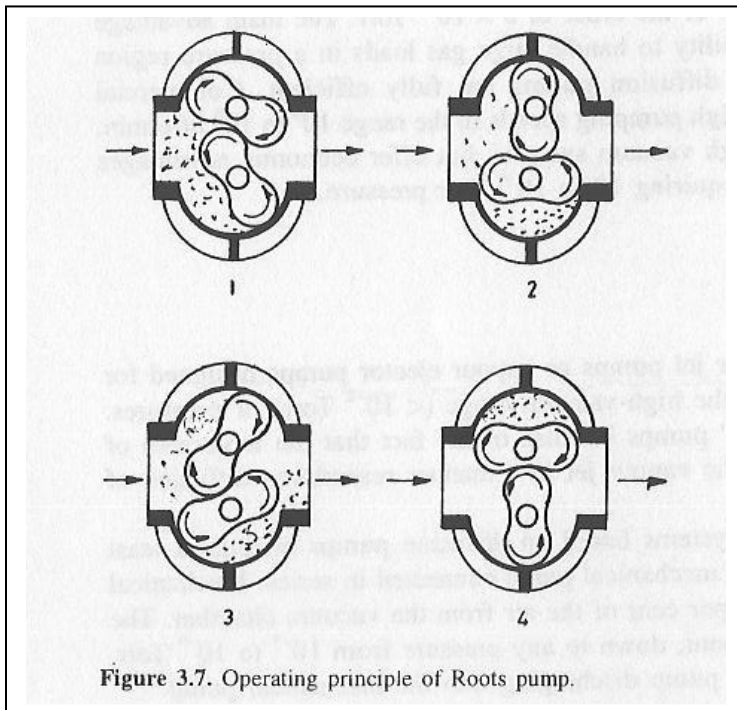


Capacities available: 75 to 30000 m³/h
 Operating Pressure range: 10 to 10⁻³ mbar total pressure, inlet pressure is sensitive to fore pressure.

Multistage Roots Pump
 Capacities available: 25 to 1000 m³/h
 Operating pressure range:
 (4-stage) 1000 to 5 x 10⁻² mbar total pressure
 (5-stage) 1000 to 2 x 10⁻² mbar total pressure
 (6-stage) 1000 to 10⁻³ mbar total pressure

Construction:

The Root's Pump consists of two double-lobe impellers (R₁, R₂) which are rotated in opposite directions within the pump housing. There are also intake and exhaust outlets. For higher pressure duty, three-lobe rotors are sometimes used.



The impellers have identical cross sections and are dimensioned and arranged so that a large enough part of the surface of R₁ is a close fit to a part of the surface of R₂ through the rotation. The impellers are also a close fit inside the pump housing H. The rotating impellers do not however, touch one another, or touch the housing, but there is a small clearance (about .05 - .25mm).

Since the inlet port is isolated from the outlet by a narrow gap (clearance between parts) there is a

back flow of gas from the exhaust region to the inlet region, and therefore efficiency of the compression is much lower than in the case of oil sealed pumps. However, the

absence of rubbing contacts means that higher speeds of rotation (1000-4000rpm) are possible, leading to much higher pumping speeds.

The conductance of the clearance gaps decreases as the average pressure in the pump falls, the pump efficiency occurs when pump is operated at a compression ratio of about 10 at a pressure of the order 5×10^{-2} Torr. Therefore the pump must be provided with a suitable backing pump.

Root's pumps provided with cooling by gas circulation reach ultimate pressures of 70 Torr (without backing pump). For better efficiency, multi-stage pumps such as three stage pumps can be used. 3-stage Root's pumps can have a compression ratio of 10^4 and an ultimate pressure of 10^{-6} Torr.

If an oil free system is required, the backing of the system is obtained by using dry rotating pumps.

Mechanical Boosters

A mechanical booster is basically a Roots pump modified for high vacuum applications. This generally involves proved leak tightness, different stator/ rotary seals and the connection of the gear box to the outlet of the pump so the same pressure exists in the gear box as in the fore line.

The ultimate pressure achieved by a mechanical booster is very dependent on the ultimate of the fore pump, and where a liquid ring pump is used it is usually necessary to use two mechanical boosters in series to obtain a pressure below 1mbar.

Rotational speeds vary between 500 and 3440 rev/min and depend on the size of the pump.

Overheating is generally a problem in with a mechanical booster causing of clearance which may result in seizure. Operation up to 90°C is permissible with cooling only applied to mechanical components.

Multistage Roots Pumps:

Multistage roots pumps normally have three, four, or five stages of Roots mechanisms in series and are driven off the same shaft. In the case of three stage pumps it is normal to back them with a further three stage pump, thereby giving six in total.

Rotational speed is normally that of a two pole electric motor – that is 2850 rev/min (50Hz) or 3440 rev/min (60Hz).

Stage ratios are important to efficient running at normal inlet pressures. The inlet stage is the largest and the outlet stage is the smallest.

Over heating is a potential problem in the high pressure stages when the pump is working at low pressure, and for this reason the higher pressure stages are frequently fitted with water cooled heat exchanges in their outlet port. Gas ballast or purging is often used on a number of the stages to ensure that the vapors being pumped do not condense. Frequently there are gas purges at the shaft seals to keep them clean so as to improve their reliability.

Typical Applications:

1. Chemical, metallurgy, coating, electron beam welding, steel degassing, process engineering
2. Pumping of highly chemically active gases and handling of fine dust – that is, semiconductor manufacture plus where system contamination is a concern.

Partial Pressure Analysis

1. What is partial pressure analysis?

Partial pressure analysis deals with the measurement of pressures of individual components of a gas mixture.

2. Principle behind partial pressure analysis

The basic principle of partial pressure analysis lies in the different deflection of ions under the influence of electric and magnetic fields. Usually, an ion current or a change in a current is measured. A common method of partial pressure analysis is using mass spectrometer.

3. Stages involved

The following are the stages in partial pressure analysis using mass spectrometric techniques:

- a. Ions are created from gas, usually by electron impact.
- b. These ions are accelerated to known energies in the chosen direction, and focused onto the entrance aperture of an analyzer.
- c. The ions entering the analyzer are separated on the basis of their charge-to-mass ratio by means of an arrangement of electric and/or magnetic fields.
- d. The separated ions are detected upon arrival at a collector. Ions of a particular species are brought to pass at a particular point on the collector by properly choosing the accelerating potential or by adjusting electric and/or magnetic fields.

4. Different Instruments used in partial pressure analysis

a. Magnetic Deflection Mass Spectrometers

Principle:

A positive ion of mass M and charge ne , where e is the electron charge and n is an integer, will undergo a deflection in the magnetic field B which results in a path along the arc of a circle of radius R given by:

$$Mv^2/R = B neV$$

Where v is the velocity of the positive ion involved. The velocity v is acquired by acceleration through the potential difference V volts, so that we know

$$neV = \frac{1}{2} M v^2$$

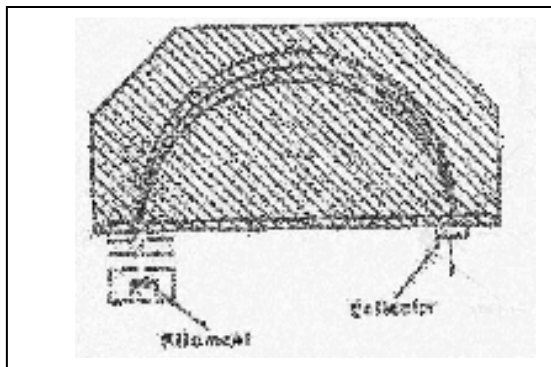
Solving for v , we can write

$$M = [B^2 R^2 ne] / 2V$$

Now for given values of R and B ,

$$M = [R_e ne / V]$$

Where $R_e = B^2 R^2 / 2$. Usually $n=1$, so that a scan of various values for V is also a scan over the mass spectrum.



Working:

Ions formed are accelerated through a potential difference of V volts. When these ions enter the spectrometer they are, as a rule, traveling in slightly different directions. A pair of slits serves to collimate the ion beam, which then passes through a velocity selector. The velocity selector consists of Uniform electric (E)

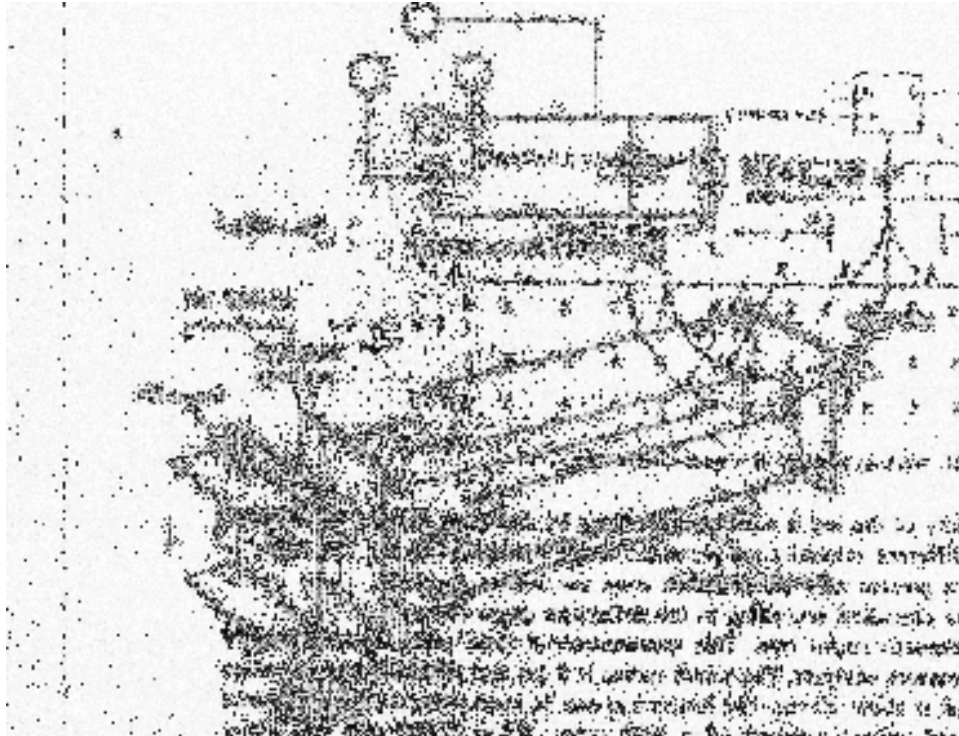
and magnetic fields (B) that are perpendicular to each other and to the beam. The ion beam is permitted through the slit, i.e. moving undeflected when the velocity of the ion = E/B. Thus by choosing various values of E, ions of different velocities are permitted inside the spectrometer. The atoms or molecules present may be identified from the masses recorded. These instruments are classified according to the deflection angle chosen as

- 90° magnetic sector type
- 60° magnetic sector type
- 180° magnetic sector type

The working range of the deflection type mass spectrometer is within 10^{-5} to 10^{-11} Torr. Resolving powers are found to lie at 30 and above. Mass-spectrometer data are recorded as ion currents for various mass to charge ratio. The recorded data make up a mass spectrogram.

- b. Cycloidal Mass Spectrometer
- c. Quadrupole Mass Spectrometer
This is described later.
- d. Time of Flight Mass Spectrometer

5. Quadrupole Mass Spectrometer



The **quadrupole mass analyzer** is one type of mass analyzer used in mass spectrometry. In a quadrupole mass spectrometer the **quadrupole mass analyzer** is the component of the instrument responsible for guiding sample ions to a detector, based on their mass/charge ratio (m/z). A quadrupole mass analyzer is essentially a mass filter that is capable of transmitting only the ion of choice. A mass spectrum is obtained by scanning through the mass range of interest over time.

This is one of the most important spectrometers. In these spectrometers, the analyzers do not use a magnet and the pressure range of their working is 10^{-4} to 10^{-12} Torr. Ion source and collector are easily separated from the analyzer and thus the addition of an electron multiplier is not difficult. The ion source and collector are connected in a straight line path. The focused ions travel along the symmetry axis of the four rod structure in case of a quadrupole analyzer.

The figure shows the arrangement of a quadrupole mass-spectrometer. The unknown gas is ionized in the ion source. The ion beams are now made to pass through the aperture into the analyzer space. Ions passing through the analyzer are filtered and ions of a particular mass are collected in the ion collector as ion current. The current is proportional to the partial pressure of the constituent gas.

In the analyzer, ions are filtered according to mass by a quadrupole electric field setup by four parallel rods receiving an alternate voltage $V_{ac}\cos\omega t$, and a

direct voltage V_{dc} . These produce a hyperbolic electric field over the cross section close to the axis of the instrument.

The RF field causes a charged particle traveling in the z-direction to oscillate. The amplitude of oscillation is a function of both the mass number of the particle and the voltage at the electrodes. Ions where the amplitude of oscillation remains small than γ_0 are free to pass through the quadrupole field. The field parameters can be adjusted so that the filter will pass ions of only the mass related to the applied voltage, so long as

$$V_{dc}/V_{ac} \leq 0.167$$

The mass number of the ions passing through the filter is given by:

$$M = Vac/\omega^2 \gamma_0^2 = \text{constant}$$

Where γ_0 is the distance from the z-axis to a rod electrode.

The sensitivity of the instrument varies with the efficiency of the ion source, and its filtering capacity. All of these factors are closely interrelated. The resolving power of the instrument rises with increasing ion mass in such a way that the resolution, ΔM , remains constant on the entire range.

Triple Quadrupoles:

A series of three quadrupoles can be used; this is known as Triple Quadrupole mass spectrometry. The first and third quadrupoles are mass filters, and the middle one is a collision cell. This allows the study of fragments, useful in structural studies.

For example, the first quadrupole may be set to "filter" for a drug ion of a known mass, which is fragmented in the second quadrupole. The third quadrupole can then be set to scan the entire m/z range, giving information on the sizes of the fragments made. Thus, the structure of the original ion can be deduced.

Applications:

These types of mass spectrometers excel at applications where particular ions of interest are being studied because they can stay tuned on a single ion for extended periods of time. One place where this is useful is in liquid chromatography-mass spectrometry or gas chromatography-mass spectrometry where they serve as exceptionally high specificity detectors. Quadrupole instruments are often reasonably priced and make good multi-purpose instruments. This instrument consists of an ion gauge like front end, the **analyzer**, an electron multiplier, and electronics.