



OMOK GAME ANALYSIS

By:
Everardo Uribe



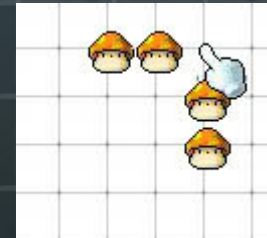
Game Description



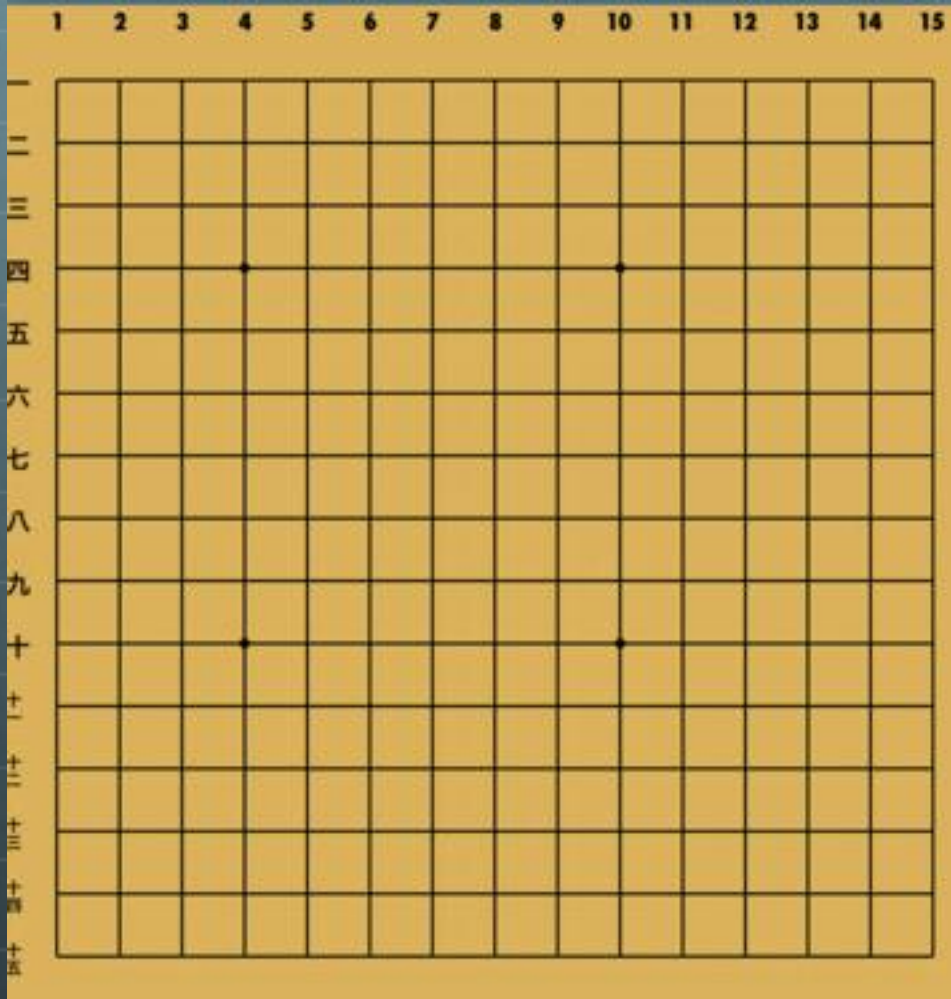
- The board we are analyzing is a 15 by 15 matrix.
- This is a two player game
- Can be played on a board or with an paper/pencil.
- Pieces are called pawns which are either white or black (black makes the first move)
- Each player makes one move at a time.
- To win either player has to make 5 pawns align vertically, horizontally or diagonally. The player who does so, wins.

Two Specific Rules

- 🌐 **Overline Rule** : A player will not win if a row of more than 5 is formed. For example, if a row of two and row of three are connected horizontally with a piece in between, this is not a winning move.
- 🌐 **Three and Three Rule** : A player cannot make a move that forms two open rows of three simultaneously. Such rows would be considered open, if they aren't blocked on both sides.



Game Board (15 by 15)



**BLACK AND WHITE
PAWNS**



Fair or Unfair?

- Decided to play each other 30 times to see if either player had a winning strategy.
- We alternated as first and second player.
- At first, it seemed like there wasn't but as our skills progressed. First player won a bit more times.
- RESULTS:**

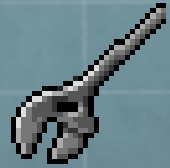
```
There were 30 rounds.  
Player 1 won 19 times.  
Player 2 won 11 times.
```



GAME CLASSIFICATION



- Determinate vs. Random = Determinate
- Zero sum vs. Non zero sum = Zero sum (one player's losses is the other player's gains)
- Symmetric vs. Nonsymmetrical = Symmetrical (pay off depends only on strategy, not player)
- Perfect vs. Imperfect Information = Perfect (Access to the board)
- Misère vs. Normal = Normal (Player with last move wins)
- Sequential vs. non-sequential = Sequential







Analysis Tools



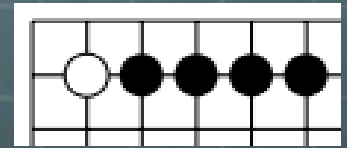
- 🌐 In order to analyze the game appropriately, we need to explore different analysis tools.
- 🌐 We kept those tools which would provide useful assessment of the game.

Threat Types

-  We identify local game states (disregarding all other global positions within the board) as threats if they give a player the winning upper hand.
-  There are immediate and delayed threats. Immediate threats pose an immediate threat to the defender while a delayed threat doesn't, but can possibly be a threat within the next two moves.
-  We identify the player who poses the threat as the attacker and the other player as the defender.
-  We identify these threats and include local strategies (counter actions for defender) for each.

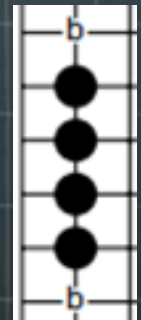
Immediate Threats

- 🌐 **FOUR:** A line of five squares, attacker occupies any four, with fifth square empty.



Counter: Defender must counter immediately by blocking creation of FIVE.

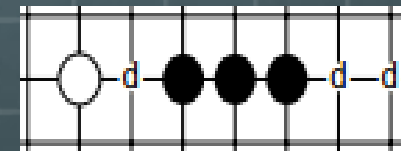
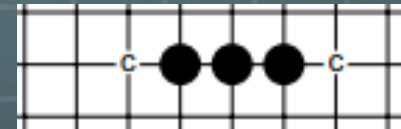
- 🌐 **STRAIGHT FOUR:** A line of six squares, where attacker occupies four center squares, while both outer squares are empty.



Counter: None. Automatic loss.

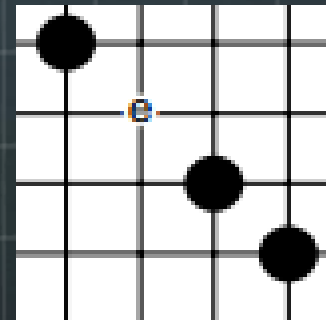
Delayed Threats

- 🌐 OPEN THREE: A line of seven squares of which the three center squares are occupied by attacker and the remaining four squares are empty.
- 🌐 OR a line of six squares with three consecutive squares of the four center squares occupied by the attacker and the remaining three squares are empty



Counter: This can turn into straight four so it must be countered immediately.

- 🌐 Broken three (delayed): A line of six squares of which the attacker has occupied three non-consecutive squares of the four center squares, while the other three squares are empty.



Counter: Same situation as the Three.



Threat Functions



We represent each threat as follows where • is a black (attacker) position, ◦ is a white (defender) position, - is an empty position:

- FIVE: $f(\bullet, \bullet, \bullet, \bullet, \bullet) = 0$
- STRAIGHT FOUR: $f(-, \bullet, \bullet, \bullet, \bullet, -) = 1$
- FOUR: $f(\bullet, \bullet, \bullet, \bullet, \bullet, -) = 1$
- OPEN THREE: $f(-, -, \bullet, \bullet, \bullet, -, -) = 2$
- BROKEN THREE: $f(\bullet, -, \bullet, \bullet, \bullet, -, -) = 2$

These are functions of particular sequentially-determined pieces with no specific spatial orientations.

Note: We introduced new threat, FIVE, which is just the winning local game move.

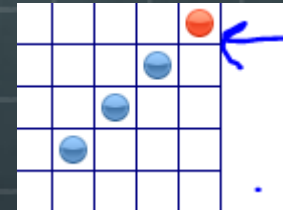
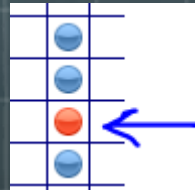
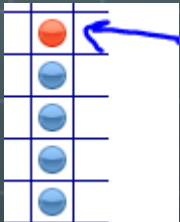
Threat Trees

- 🌐 We identify threat trees as game states that involve threats.
- 🌐 A winning threat tree is a threat tree that leads to a double threat in one move.
- 🌐 A double threat is simply a combination of two threats that would lead the attacker to win. This includes: two delayed threats, two immediate threats, or a delayed and immediate threat.

```
[1], [2], [0], [0], [0]
[0], [1], [0], [0], [0]
[1], [1], [1], [1], [0]
[0], [0], [0], [1], [0]
[0], [0], [0], [0], [0]
```

Replies

- 🌐 A reply to a threat T is the set of defender moves R that successfully prevent a threat.
- 🌐 R is empty for a *straight four* (since defender will lose), R is one move for a *four*, R consists of two or three moves against an *open three*, and against a *broken three*, R consists of three moves.





Observations







- It is clear that the first player to create a double threat wins. Usually several threats are made before a double threat is reached.
- It is easier to create a double threat consisting of two delayed threats than it is to create the other two types of double threats.
- The more pieces an attacker has on a threat tree, the easier it is to spread out threats, and the more difficult it is for the defender to optimize replies against these threats, and even limits the amount of performable replies.
- This makes it easier for an attacker to create a winning threat tree.



Broad Strategy



-  A broad strategy is one in which the player increases the potential of producing threat trees, while reducing the opponent's potential for producing threat trees.
-  The opponent's defense moves can be ignored until the attacker finds a potential *winning threat tree*. The attacker still must observe the opponent's potential threats though.
-  Once a potential winning threat is found, the attacker then investigates closely what defense moves the opponent can make and optimizes the best next two moves to win no matter what the defender chooses to play.
-  Once a winning threat tree is created, and the opponent hasn't established their own winning threat tree, the opponent's ability to create possible fours can be ignored as the offensive player will win and opponent's only choice is to defend.



Is Omok unfair?



- Undoubtedly, players who focus on offence, that is, creating threats, have a higher chance of winning.
- If one produces a continuous sequence of threats, other player may never have a chance to win.
- An attacker has control of the game's direction. Her moves not only dictate where her pieces go, but often where the defender's pieces go.
- The attacker limits the defender's gameplay.
- Conclusion: Game is indeed unfair. BUT, which player has the winning strategy?

YOU WIN

The Winner is...

YOU LOSE

- The first player makes the first move and thus lands the first piece on the board.
- As discussed earlier, the amount of possible threats to perform is proportional to the amount of pieces a player has on the board.
- Thus, if both players play optimally, the first player will be the first player to establish a threat. This one threat will then force defender into performing a reply. As the defender sacrifices a move in defense, this will enable the first player an advantage in creating another threat, and then a sequence of more threats, all of which the defender has to correspond to with a reply.
- Thus, even if second player plays optimally, she is forced to submit to the first player's control of the game after creating the first threat.
- First player has the winning strategy!

YOU WIN

R.A.A. Extension

YOU LOSE

This is an attempt at creating a *reductio ad absurdum* proving that first player has winning strategy:

Say second player has winning strategy S that allows her to create the first threat tree T using three sequentially located pieces which then leads to setting up multiple threats up, while the first player is constrained to his set of replies, until the creation of a winning threat tree.

But first player can achieve that same T using that same strategy earlier as he is the first player and lands the first piece on the board. So the first player has the winning strategy.

Switch Control

- 🌐 Unfortunately, this isn't a perfect world...
- 🌐 Players who place themselves in the offense put their selves in the danger of losing.
- 🌐 Attackers have to pay close attention to the opponent's moves, but sometimes arrogance or lack of attention changes the tides of the game.
- 🌐 This is most likely to occur on game boards with lots of pieces. When this occurs, sometimes the defender successfully defends against a double threat (consisting of two delayed threats) and the attacker's control of the game is passed to the defender.

Switch Control

- The worst switch of control an attacker can experience is one in which the defender defends from a threat using a higher leveled threat.
- That is, against a global threat with $f = i$, if a defender replies with a threat of value $f = j$ such that $j < i$, then the defender gains the offensive position of the game and control of the game. If, $j = 0$, then the defender wins.

Final Test Run!

- 🌐 We decided to play each other 30 more times.
- 🌐 Will our new knowledge of threats and strategy help?

```
There were 30 rounds.  
Player 1 won 24 times.  
Player 2 won 6 times.
```

It seems like it did!

References

Allis L. Victor (1994). *Searching for Solutions in Games and Artificial Intelligence*. Ph.D. thesis, University of Limburg, The Netherlands.

***All threat type images (Slide 10 and 11) and reply images (Slides 14) taken from Allis' article.**