

# ModLight: Designing a Modular Light Signaling Tool for Human-Robot Interaction

Elizabeth Cha<sup>1</sup>, Tushar Trehon<sup>2</sup>, Lancelot Wathieu<sup>3</sup>, Christian Wagner<sup>1</sup>, Anurag Shukla<sup>1</sup> and Maja J Matarić<sup>1</sup>

**Abstract**—Recent work has shown the potential for lights to act as simple, yet expressive signaling mechanisms for use in a variety of human-robot applications. However, the wide range of robot shapes and sizes makes it difficult for researchers to quickly prototype and evaluate different light configurations and signal designs. In this work, we present the design of ModLight, a modular research tool consisting of a set of low cost light blocks that can be easily reconfigured to fit a myriad of robots and applications. ModLight also provides researchers, designers, and students with open-source software tools that enable them to visually design new signals and easily integrate them into existing systems. This work also serves to motivate the need for further research in developing light behaviors for use in human-robot interaction. Towards this goal, we present our design rationale including a brief analysis of the signaling needs of several robots and applications.

## I. INTRODUCTION

A key challenge for robots operating in human environments is effective communication between the robot and human [1], [2]. Humans communicate using a continuous stream of nonverbal cues that are implicit and often unconsciously produced [3]. Robots that operate in human environments are expected to utilize similar signals to facilitate coexistence, interaction, and collaboration.

Many non-humanoid robots, however, do not possess the physical attributes needed to utilize the same set of signals as humans. Moreover, due to their functional nature, many robots only take action to complete tasks. These goal-driven actions are often quite different than those employed by humans and consequently, lack the implicit cues humans rely on when interacting [4]. To overcome these issues, researchers are exploring alternative forms of robot communication [1].

Recent work has shown the potential for lights to act as simple, yet expressive signaling mechanisms for a variety of robots and applications [5]–[7]. The design and success of the signals utilized in these works are often dependent on the shape, configuration, and placement of the lights on the robot. Since the construction and integration of a light signaling system requires significant time and effort, it is difficult to try out many potential designs.

Moreover, as systems are typically designed and constructed for a particular robot, it can be burdensome to val-

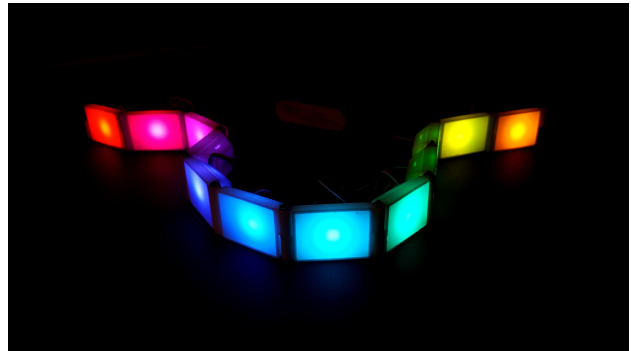


Fig. 1: *ModLight* is an independent, reconfigurable light signaling pattern. The constructed prototype shown above is configured with 12 modules and programmed to show a rainbow pattern.

idate signaling behaviors across multiple platforms. Hence, there is a need for research tools that enable roboticists to more quickly and efficiently explore the design and use of light behaviors for human-robot interaction [8].

In this work, we aim to address this need through ModLight, a modular low-cost research tool that provides light signaling capabilities and can easily reconfigure to a variety of shapes and sizes. ModLight is self-contained and allows users to more quickly explore the design space of light signals. Since it is controlled and powered externally, it is easy to integrate onto different robots which facilitates cross-platform validation.

ModLight provides a software library and visual programming interface that enables users of varying technical backgrounds to quickly and easily create complex light behaviors. This also promotes collaborative design, an approach which has been shown to be beneficial to designing light behaviors [8].

In addition, this work also serves to motivate the need for further research in non-humanoid signaling. Towards this goal, we present design guidelines taken into account when creating ModLight including those related to the signaling needs of several types of non-humanoid robots and selective use cases. We also provide links to all of the necessary information to construct and program ModLight as it is an open source system that users can continue to add functionalities and new designs to. This community-driven approach will save researchers time and allow them to leverage past users' experiences.

## II. RELATED WORK

For many years, electronic devices have incorporated lights for communication purposes [9]. Lights provide a

<sup>1</sup>Elizabeth Cha, Christian Wagner, Anurag Shukla, and Maja J Matarić are with the Interaction Lab in the Department of Computer Science, University of Southern California, Los Angeles, CA 90089 [echa@usc.edu](mailto:echa@usc.edu), [cswagner@usc.edu](mailto:cswagner@usc.edu), [anuragsh@usc.edu](mailto:anuragsh@usc.edu), [mataric@usc.edu](mailto:mataric@usc.edu)

<sup>2</sup>Tushar Trehon is with the Department of Electrical Engineering, P.E.S. Institute of Technology, Bangalore, India [tushar.trehon@gmail.com](mailto:tushar.trehon@gmail.com)

<sup>3</sup>Lancelot Wathieu is with the Department of Mathematics, Georgetown University, Washington, DC 20057, USA [lbw29@georgetown.edu](mailto:lbw29@georgetown.edu)

simple, yet reliable communication channel and are often used to indicate information about a device's state.

For instance, cars utilize lights on the dashboard to warn drivers that a door is ajar or the engine requires repair. Televisions and monitors often use an indicator light to show when they are turned on and ready for use. The efficiency, low-cost, small size, and durability of lights, and in particular, LEDs make them suitable for a wide range of environments and applications and hence, ideal for use on robots.

Although simple, lights have a rich design space and can be quite expressive [9]. Prior work has shown that point and ambient light displays can convey complex properties such as intent, affect, animacy, and identity [10]–[13]. Yet, few devices have actually taken advantage of this expressive capability and instead rely on a small vocabulary of behaviors that are often learned [9].

These simple, learned signals have long been used by more traditional robots such as those used in industrial and manufacturing settings [14]. The inclusion of robots in more human-oriented environments, however, has spurred research exploring how lights can be used to improve interactions between humans and robots.

The addition of a point light source has been found to increase saliency and improve awareness of a robot [15]. A simple blinking LED has also been found to be useful in conveying the robot's state in combination with speech [16].

Other works have explored how more complex light behaviors can be used to express different aspects of the robot's task and state [5], [7] in the absence of speech as well as more affective properties such as mood or affect [6]. Light behaviors drawing inspiration from human communication, industrial design, and other sources have been shown to improve people's ability to determine a robot's intent and task progress [5], [7]. Other light behaviors have been successful in not only communicating information about the robot (e.g., "waiting" for input), but also inducing action [5].

While many individual studies have shown the promise of light-based communication, more work is needed to completely explore its design space. This is an especially complex issue due to the bandwidth of light signaling systems. While a light source can be used as a simple on/off signal to communicate a binary state, the use of different colors and lights can greatly expand the expressiveness and bandwidth of a single light source. As multiple lights are combined together in different configurations, this bandwidth grows exponentially. Furthermore, the placement of lights may also affect how users perceive light signals. Hence, ModLight is designed to enable users to more easily explore these research questions in the context of different robot platforms and applications.

### III. DESIGN GUIDELINES

Creating a light signaling platform requires careful consideration of both the robot's goals and how it will interact with people. In addition to the physical construction, the software must provide a wide range of signaling functionalities and

be able to be integrated into the robot's current architecture. As the use of lights as an expressive communication medium for HRI is still an open research area, the ability to quickly construct and test designs provides researchers with greater flexibility and efficiency.

To guide the design of this system, we derived three sets of requirements. User requirements identify the general needs that must be met for the system to be a viable research tool from the perspective of targeted users. Usage requirements take into account the functionalities that are required to meet the signaling needs of a wide range of robots. Lastly, we use these requirements to generate system requirements, or general design criteria for the mechanical, electrical, and software components of the system

#### A. User Requirements

We identified three potential users: researchers, designers, and students or hobbyists. As the targeted users vary greatly in technical ability and available resources, it is important that the system be flexible, easy to use, and simple to manufacture. With these goals in mind, we generated the following requirements:

- R1:** The system should be adaptable in both its size and shape to fit a wide range of robot platforms.
- R2:** The system should not interfere with the main functionality of the robot in any way.
- R3:** The system should be self-contained and not require significant modification of the robot platform to install.
- R4:** The system should be low-cost and affordable for all potential users.
- R5:** The system should utilize easy to obtain components that can be recycled for other applications.
- R6:** The system should utilize fabrication methods that are widely available and low-cost.
- R7:** The system should be easy to program and integrate into existing robot software.
- R8:** The system should be quickly and easily reconfigurable.

Since we target a variety of users, these requirements are broad but provide the inspiration for more specific hardware and software criteria which we discuss below.

#### B. Signaling Requirements

We envision the system to be used primarily for communication in human-robot interactions and therefore, took into account the signaling needs of many current robot platforms and applications. Although light signals can be beneficial for many robots, we primarily focus on non-humanoid robots as they have limited communication modalities and often operate in more functional, task-oriented roles. This section also aims to motivate the need for greater research into nonverbal signaling and in particular, the use of light signals.

In Fig. 2, we present a broad overview of non-humanoid robot types which show their primary uses and signaling needs. We consider five types of robots: ground vehicles, aerial vehicles, mobile bases, rolling robots, and telepresence platforms. In determining their signaling needs, we consider the operating environment, usage, who will be co-located

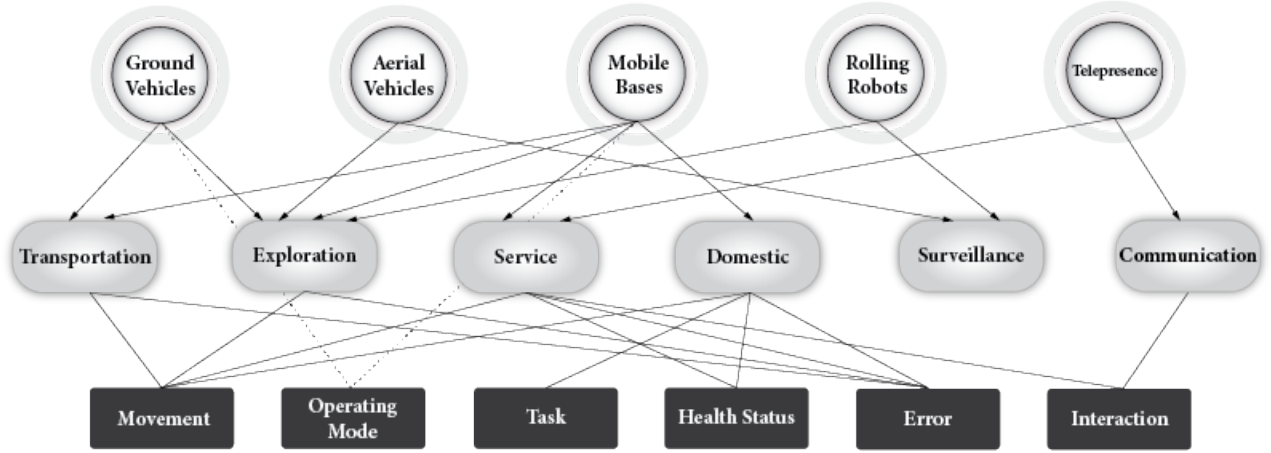


Fig. 2: We identified five types of non-humanoid robots and six potential applications. Mobile bases have a significantly higher number of applications than the other categories. We also identified six areas of signaling that are important to these classes of robots.

with the robot, and scenarios that may require communication with co-located humans.

We identified six categories of information that are important to express by different non-humanoid robots. The primary and most common signaling need relates to the *movement* of the robot. Since all of the identified robot types utilize a significant amount of motion, it is important to provide cues that enable coordination and prevent collisions. These cues which express information such as motion intent and timing (i.e., when a motion will start or occur) help humans to plan their own actions with the robot in mind [2], [4].

Information about the robot's *health status*, such as its battery levels, can be beneficial in scenarios where co-located humans are responsible for operating or maintaining the robot. Similarly, *errors* function to warn nearby people that the robot has a problem so that they can provide assistance, notify the correct personnel, or stay away in certain more hazardous cases [17]. We separated errors from health status due to their important role in safety [14]. Knowing when an error has occurred can be critical when the robot may potentially harm a nearby person. Acknowledging errors or mistakes has also been shown to improve people's attitudes towards robots [18], [19].

Since many robots are functional in nature, expressing information about their *task* provides insight into the robot's behavior and what actions they may take in the future. This also enables people to coordinate their own actions with the robot so they can collaborate. In cases where a nearby human is responsible for assigning tasks to the robot, task progress helps them to manage allocation of future tasks.

As many robots can function with a range of autonomy, it is important to know the robot's current *operating mode*. If the robot is being operated by a person that receives visual or audio feedback, privacy concerns may arise if people are unaware they are being observed [20]. Prior research has also shown that people tend to trust and treat the robot differently when they believe it is autonomous versus manually controlled [21], [22]. This can be further

complicated in scenarios where the same robot may be operated in multiple modes and by different people (e.g., telepresence robots or autonomous vehicles).

For robots that are expected to directly communicate with people, signals that support *interaction* can be critical to the robot's success. Past work has already found that the use of light cues can complement speech and get attention [15], [23]. More complex interactions, such as turn-taking or handovers, can also benefit from the addition of lights [16].

Keeping this wide range of information in mind, we aimed to provide a high level of functionality and flexibility to users. Since the signals should be visible in different environments and while the robot is potentially moving, the system should provide a wide range of colors, speeds, and brightness levels. Moreover, colors already have strong associations and can hence, be a powerful tool when trying to gain attention, convey different states (e.g., error vs. okay), or have different "levels" of signaling (e.g., low vs. high battery). Also, as the same lights may be used to convey several different types of information, we tried to provide the software functionality to create more complex behaviors. This is one of the primary concerns with light signaling as many existing devices rely on simple behaviors (e.g., on vs. off) which do not scale well for high information content. Hence, to generate signals that are intuitive and contain high information content, greater flexibility is needed. Lastly, we also took into account how light has already been used to convey information in not just robots, but in electronic devices, transportation, and other applications as well. We made sure that our platform can replicate not only the signals used in these past work, but the light configurations as well.

### C. System Requirements

**Module:** We define a module as an individual piece with a contained light source, associated electronics, light diffuser, and physical connectors to combine with additional modules.

- 1) **Modularity-** Each module should be self-contained and possess the mechanical connectors to form common shapes such as linear arrays, grids, and rings.

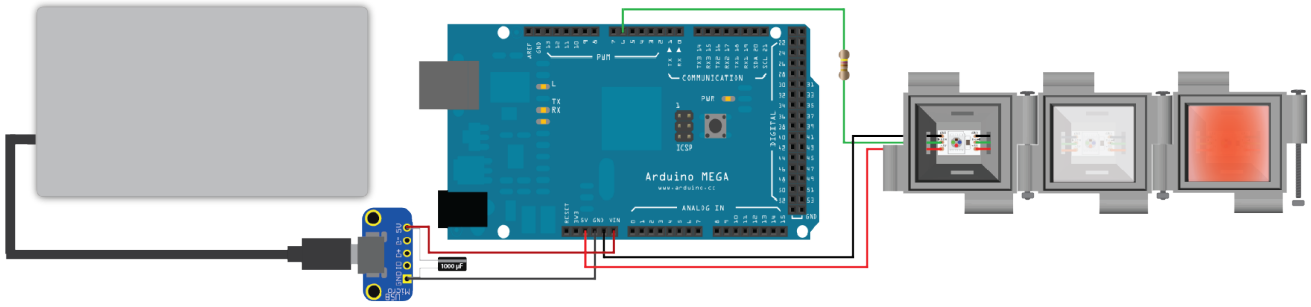


Fig. 3: An overview of the ModLight System. Power is provided from an external power bank to the Arduino Microcontroller which powers and controls the LEDs. Each 3D printed module contains one RGBW LED with connections between the modules providing power, ground, and data. LEDs are individually addressable for greater flexibility. A piece of frosted acrylic provides even light diffusion across the front of the module. Screws and nuts are used to set the angle between modules in order to create different shapes.

- 2) Reconfigurability- The modules should be easily re-configured to without significant effort or modification.
- 3) Size- The design should minimize module size and the transition between light-emitting faces of the modules.
- 4) Fabrication- Fabrication should be low-cost and easily accessible. Modules should be designed for both indoor and outdoor use and scalable in size and quantity.
- 5) Front- The front face of the module must be removable and effectively diffuse light source throughout.
- 6) Safety- The design should minimize accessibility of electronic components and catastrophic breakdowns.

#### Electronics:

- 1) Lights- The lights should be minimal in size, easy to control, and have high visibility. They should also be individually programmable and have a large range of colors for greater flexibility.
- 2) Power- The entire system should run off an independent, external power source.
- 3) Controller- Lights should be individually addressable and controlled by a common, low-cost microcontroller.
- 4) Speed- Lights should have a fast refresh rate to support high speed light behaviors. Timing requirements should accommodate several potential controllers.

#### Software:

- 1) Software Library- The system should provide a software library using a higher-level programming language that removes the need to directly program the microcontroller and enables users to more easily generate complex light behaviors. Identified core behaviors for each light include turning on, blinking, and pulsing. The library should provide functions for both core behaviors as well as common behaviors involving groups of lights. The library should also support combining or chaining multiple behaviors to create more complex signals while dealing with the intricacies involved such as timing.
- 2) Visual Programming Interface- The system should provide a graphical user interface for programming the lights. It should provide the same range of light behaviors as the software library but require no programming

knowledge. It should also generate the corresponding code using the software library for users to embed in their own programming applications.

## IV. SYSTEM OVERVIEW

All the information and files needed to construct the ModLight system can be found at [www.robotics.usc.edu/interaction/modlight](http://www.robotics.usc.edu/interaction/modlight). Since ModLight is an open source tool, we provide access to all of its design files and software. We also encourage users to submit new design ideas and software functionalities.

### A. Mechanical Design

ModLight consists of individual modules that contain an RGBW LED and a piece of frosted acrylic for uniform light diffusion. We experimented with several different module designs, varying the shape of the module as well as their connective linkages. Our final physical prototype is in the shape of a truncated pyramid which was chosen for its tapered sizes. This enables a greater degree of relative rotation between the modules compared to rectilinear sides.

The linkages used to connect individual modules are two-section hinge joints. Each module contains one half of the hinge which are joined together by a pan head screw. A nut is placed opposite the screw head to tighten the linkage at a particular angle. This mechanism enables rotation along the edge of each module along one dimension. Reconfiguration is quick and easy and only requires removing the washer and screw. This design is simple, easy to produce, and permits a variety of geometrical shapes. It also has a high tolerance for errors in the fabrication of the linkages.

We chose to fabricate the modules using 3D printing due to its cost effectiveness and ease of access. However, this also affected the design of the modules. For instance, the resolution of many home-use 3D printers limits the size and complexity of the linkage design. Even smaller versions of the current design had significant flaws when printed on lower cost systems.

The prototype module size was determined by the size of the LED. However, more compact LEDs are available which can be used for applications where a smaller module size



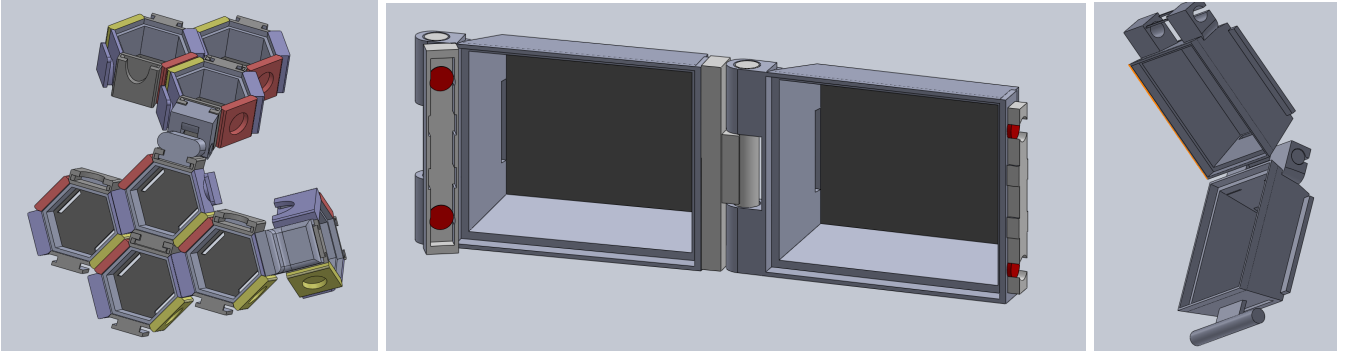


Fig. 4: Several designs for the ModLight module.

is preferred. For larger modules, an additional LED can be added to maintain the same level of brightness.

While we initially planned for the front face of the module to be square, our prototype was slightly rectangular to accommodate the LED wiring system we used during testing. The front face of the module is a piece of frosted acrylic with 54% transmission made by Acrilyte. We chose this transmission rate as it evenly diffused the light and created a softer look.

We have also developed several other module shapes that are being tested. The two shapes we are primarily exploring are the truncated pyramid and a hexagonal prism. We are also experimenting with other types of linkages that do not require any extra parts or utilize magnets instead of screws. As these designs are more difficult to fabricate, we are still in the design and testing phase.

### B. Electronics

The primary component of ModLight are the light emitting diodes (LEDs) contained in the modules. When evaluating potential LEDs, we looked for bendability, high luminosity, low power consumption, low cost, and high diffusion. We also wanted the LEDs to be individually controllable to provide a greater range of capability. For these reasons, we chose the Adafruit NeoPixel Digital RGBW LEDs contained on a flexible PCB. Adafruit also provides an Arduino Library making the NeoPixels a popular choice for both researchers and hobbyists [5], [7].

We chose to use an Arduino Microcontroller Board to control the LEDs due to their low cost, high performance, and popularity. Although there are many Arduino boards, we used an Arduino Mega for several reasons. First, the protocol used by the LEDs is very timing-specific and can only be controlled by microcontrollers with highly repeatable 100 $\mu$ S timing precision. Also, to run a large number of LED modules, the whole array must be buffered into the memory. The Arduino Mega has an accurate clock cycle and a large amount of RAM for storing the array. The Arduino Uno can be substituted but the memory size limits the number of LEDs that can be controlled. Since we also wanted ModLight to be portable and require no modifications to the robot, we powered the system using a small external power bank that

outputs the required 7 to 9 Volts. An overview of the system can be shown in Fig.3.

## V. SOFTWARE

We developed a generic C++ library which interacts with the Arduino to control the RGBW LEDs contained in the modules. The library wraps the provided Adafruit Arduino libraries as well as providing additional behaviors and timing functionalities. We also developed a Visual Programming Interface which uses the library and allows non-programmers to create and prototype light behaviors.

### A. C++ Library

The C++ library was created to provide functions to help users easily create complex light behaviors. This also removes the need for users to directly program the micro-controller and facilitates integration of light signaling code with preexisting software used to control robots.

NeoPixel Code Converter Library is a generic library that generates ino files based on the input configuration. These generated ino files utilizes the Arduino system calls to execute the desired Light Pattern behaviours. NeoPixel Code Converter Library hides away the complexity of maintaining LED states and also wraps the logic of updating LEDs with correct delay and color combinations.

The library is initialized using a vector of LightParameter objects. Each LightParameter object represents a group of LEDs along with their assigned Light Pattern behaviour. Currently supported Light Patterns are defined by the ActivePattern enum in LightParameter.h header.

---

```
enum ActivePattern { NO_PAT = 0,
                    RAINBOW_CYCLE = 1,
                    THEATER_CHASE = 2,
                    COLOR_WIPE = 3,
                    SCANNER = 4,
                    FADE = 5,
                    BLINK = 6,
                    ON_AND_OFF = 7,
                    PULSATING = 8,
                    LOADING = 9,
                    STEP = 10
};
```

---

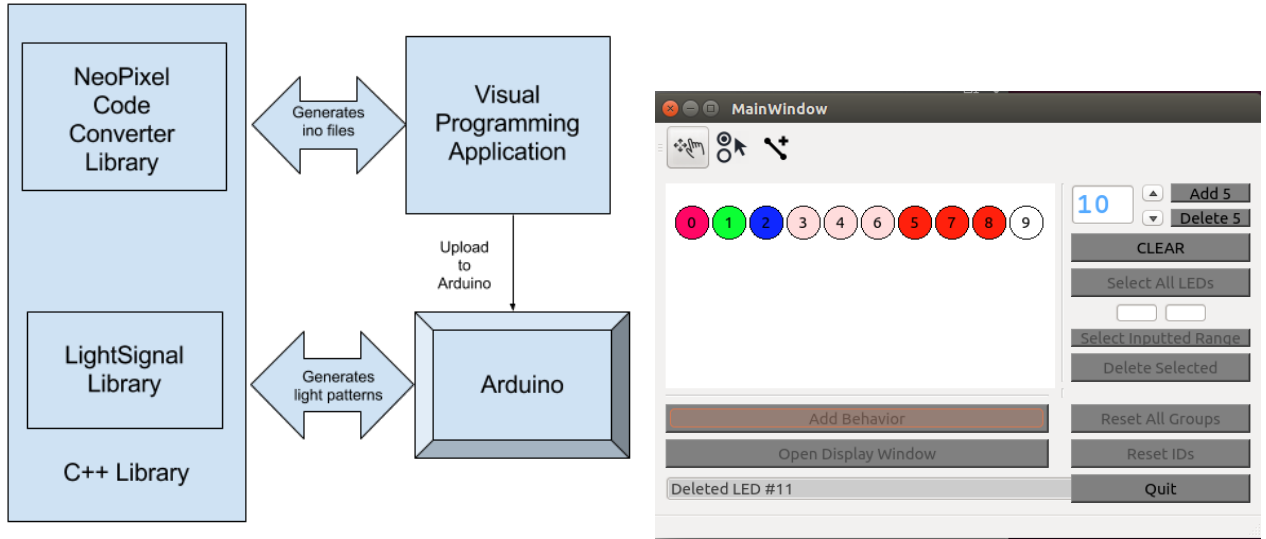


Fig. 5: ModLight software consists of a C++ library that handles generating light behaviors and sending them to the Arduino and a visual programming application that helps users without programming experience quickly create new light behaviors. In the GUI, the user first adds LEDs and then light behaviors which the interface can directly upload to the Arduino.

Calls to the `create()` function loop through the input vector and generate the Arduino `setup()` and `loop()` function bodies. The `loop()` function uses the `LightSignal` Arduino library to update the LEDs with the desired delays and color changes.

Code for the `NeoPixel Code Converter Library` is built using `cmake` that generates a static library, `libNeoPixelCodeConverter.a`. The `main.cpp` file generated by the GUI depends on this static library. Examples of various light behaviors can be found under `/Examples` folder.

`LightSignal` Arduino Library is built as a third party library for Arduino. This library handles the logic to update LEDs with different light behaviors. Code for this library is present in `Arduino.Libs/LightSignal` folder. Arduino call the library inside the `loop()` function using the `mainLoop()` function.

When the `mainLoop()` is called with the pointer to the `LightParameter` object. Library verifies whether the pattern needs to be refreshed based on start and stop time. If the pattern needs to be refreshed then it would call the `Update()` to set the correct color and delay on the LEDs to reflect the desired Light Pattern.

### B. ROS Integration

In order to make the system more useful for roboticists, we have provided a simple ROS integration. The ROS package, `ros_modlight`, contains a ROS node which subscribes to the topic `lightbehavior_cmd` and publishes its status to `modlight_status`. A sample is provided in the code repository.

### C. Visual Programming Interface

We also created a visual programming interface for users with limited programming experience. The GUI provides users with the same functionality as the C++ library and also allows them to directly upload light behaviors to the Arduino.

This makes it a valuable tool for all users as it enables them to quickly explore different light signals and see them in real life, before spending time and effort to integrate them into their system.

The GUI was developed using the Qt framework in C++, see Fig.5. It requires users to first add LEDs and then, configure their behaviors. Users can add multiple LEDs and assign IDs to each. LEDs are represented by circles marked with the assigned ID value. Later the LEDs are grouped into various sections and each section is configured with a Light Pattern to display.

Light Patterns also have additional parameters like start time, end time, total run cycles, brightness level etc. (All parameters can be found under struct `LightParameter` in `LightParameter.h`). Code for the GUI application is present under the `/GUI.Code/BlockTrial` folder. The project is created using Qt Creator IDE and can be opened and built using the `BlockTrial.pro` project file.

After configuring the LEDs, GUI can be used to either upload the code directly to Arduino or generate the `main.cpp` file which uses the `NeoPixel Code Converter` library. The generated `main.cpp` file can be compiled later to generate the `.ino` files for flashing the Arduino microprocessor.

## VI. USE CASES

Since ModLight is designed to replace platform specific systems utilized by mostly robotics researchers, evaluating its design presents many challenges. First, there is a lack of baseline for comparing the system. Usability ratings are also likely to vary across different types of users and finding users working in this area may present accessibility issues. Therefore, we present two sets of use cases in which ModLight are being utilized by researchers in our lab Fig.6. As ModLight is a recent creation, these works are still in early stages and most development has been done in simulation.

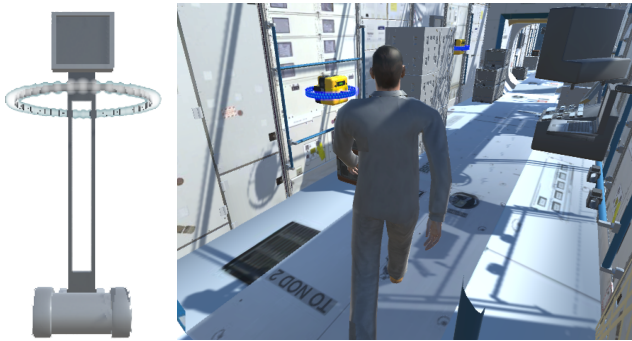


Fig. 6: ModLight is currently being applied in two uses cases: telepresence and a free-flying robot.

### A. Telepresence

The first use case we present focuses on telepresence robots which are primarily designed for communication and mobility. Since telepresence robots are intended for environments with many people (e.g., offices, hospitals, schools), communication is especially important for safety of both the robot and co-located humans.

Since these interactions are often more abstract, we are exploring how people who operate these robots would use lights on the robot if given control. Towards this goal, we have implemented a simulated version of the Beam+ telepresence robot that includes ModLight configured to a ring. Users are able to move the robot around the virtual environment as well as implement new light behaviors they can use in interactions. We plan to expand this work to the real world to provide greater diversity in the interactions people experience.

### B. Free-Flying Robot

The second use case we present focuses on Astrobee, a free-flying robot being developed for use on the International Space Station (ISS). Astrobee is designed for a variety of tasks including assisting crew, environmental surveys, monitoring crew activities, and research. Since the ISS is limited in space, astronauts will often be in close proximity to these robots making both safety and privacy significant concerns. As movement is possible in three dimensions, coordination is also more challenging as signals must be highly salient.

We are primarily exploring signaling two types of information: movement and error. For movement, we are interested in starting movement, stopping movement, and transitions (i.e., changing directions or speed). Since errors can be overly complex, we focus more on varying notification levels rather than conveying the details of the error. While some work towards these goals have been done in simulation, we will perform a real-life user study with a Parrot AR Drone and ModLight configured in the shape of the standard Parrot foam covering.

## VII. DISCUSSION

ModLight provides an alternative to the current approach of designing and constructing specialized light signaling

platforms for each robot. It is platform agnostic and prevents users from having to commit to a specific configuration allowing them greater freedom in their design and research. The system also provides a broad set of functionalities making it an effective platform for many robotic applications.

The creation of ModLight was guided by the design criteria listed in Section 2. However, the general nature of the tool provides many design constraints. The most significant of these constraints concerned the platforms availability to not only robotics researchers and designers, but students and hobbyists as well. This greatly limited the cost, hardware, and methods that could be used to build ModLight.

Our final design utilized two main fabrication methods: 3D printing (for modules) and laser cutting (for acrylic). Both methods are becoming more widely available to the general public through lower cost machines targeted for home use as well as community fabrication or build labs. There is also a burgeoning online marketplace for these technologies making them cost-effective and increasingly attractive for future use.

For hardware, we chose open-source components that are widely available and commonly used in research and hobbyist applications. We chose the Adafruit Neopixel RGBW LEDs for their affordability, software library, and support. For controlling the LEDs, we used an Arduino Mega microcontroller board. Arduino boards are popular, easy to use, flexible, and provide software tools and support for several operating systems. Users can also adapt the ModLight to work with the Arduino UNO, a lower cost, entry level platform.

The overall price of the ModLight system can be broken down into the base cost for the system and the cost per module. The base cost is approximately \$68 and includes the cost of the Arduino microcontroller, portable power source, and other one-time system components. The cost per module is approximately \$2.50 and includes the cost of printing each module from an outside service, the LED, the diffusion material, and connectors between the modules.

The ModLight software consists of a C++ library and a visual programming interface which remove the need for users to directly program the Arduino and LEDs. Instead the C++ library handles messier details of implementation such as timing while providing higher level light behavior functions. This makes it more accessible to users of varying technical backgrounds and easier to integrate in pre-existing robot software. In addition, the visual programming interface enables users to quickly prototype different light behaviors without writing any code.

The open-source nature of these components as well as ModLights design and software tools makes it possible for users to easily add new functionalities. Users can also customize the size, shape, and connections of each module to greater fit their own needs.

One of the main drawbacks to the design of ModLight is the relative simplicity of its physical design. While this makes the platform more widely accessible, it also limits the complexity of shapes ModLight can form, the size of each module, and the minimum distance between modules.

In the future, we would like to continue refining the physical design of the module. Since changing the exterior design of the module does not affect the electronics or software, it is also feasible to offer a library of modular enclosures in different sizes and shapes that users can choose from.

We also plan to improve our visual programming interface. While our prototype provides the needed functionality, both the appearance and usability can be improved. As more users try out ModLight, we would also like to incorporate feedback to improve the system.

## VIII. CONCLUSIONS

In this work, we presented ModLight, a modular interactive light platform for human-robot interaction. We motivated the need both this tool and greater research in the area of light signaling through prior work and an analysis of current non-humanoid robot platforms and applications. We also provide a comprehensive set of design criteria that helped guide the creation of ModLight and can be applied to other modular, interactive research tools.

## ACKNOWLEDGMENT

This research was supported by a NASA Science and Technology Research Fellowship, NSF NRI IIS-1528121, and USC Viterbi. We also thank Terrence Fong and Yunkyung Kim for their advice and support.

## REFERENCES

- [1] N. Mavridis, "A review of verbal and non-verbal human-robot interactive communication," *Robotics and Autonomous Systems*, vol. 63, pp. 22–35, 2015.
- [2] L. Takayama, D. Dooley, and W. Ju, "Expressing thought: improving robot readability with animation principles," in *Proceedings of the 6th international conference on Human-robot interaction*. ACM, 2011, pp. 69–76.
- [3] B. Mutlu, F. Yamaoka, T. Kanda, H. Ishiguro, and N. Hagita, "Nonverbal leakage in robots: communication of intentions through seemingly unintentional behavior," in *Proceedings of the 4th ACM/IEEE international conference on Human robot interaction*. ACM, 2009, pp. 69–76.
- [4] A. D. Dragan, S. Bauman, J. Forlizzi, and S. S. Srinivasa, "Effects of robot motion on human-robot collaboration," in *Proceedings of the Tenth Annual ACM/IEEE International Conference on Human-Robot Interaction*. ACM, 2015, pp. 51–58.
- [5] K. Baraka, A. Paiva, and M. Veloso, "Expressive lights for revealing mobile service robot state," in *Robot 2015: Second Iberian Robotics Conference*. Springer, 2016, pp. 107–119.
- [6] D. J. Rea, J. E. Young, and P. Irani, "The roomba mood ring: an ambient-display robot," in *Proceedings of the seventh annual ACM/IEEE international conference on Human-Robot Interaction*. ACM, 2012, pp. 217–218.
- [7] D. Szafir, B. Mutlu, and T. Fong, "Communicating directionality in flying robots," in *Proceedings of the Tenth Annual ACM/IEEE International Conference on Human-Robot Interaction*. ACM, 2015, pp. 19–26.
- [8] A. Löcken, H. Müller, W. Heuten, and S. C. Boll, "Exploring the design space of ambient light displays," in *CHI'14 Extended Abstracts on Human Factors in Computing Systems*. ACM, 2014, pp. 387–390.
- [9] C. Harrison, J. Horstman, G. Hsieh, and S. Hudson, "Unlocking the expressivity of point lights," in *Proceedings of the SIGCHI Conference on Human Factors in Computing Systems*. ACM, 2012, pp. 1683–1692.
- [10] A. P. Atkinson, W. H. Dittrich, A. J. Gemmell, and A. W. Young, "Emotion perception from dynamic and static body expressions in point-light and full-light displays," *Perception*, vol. 33, no. 6, pp. 717–746, 2004.
- [11] S. Brownlow, A. R. Dixon, C. A. Egbert, and R. D. Radcliffe, "Perception of movement and dancer characteristics from point-light displays of dance," *The Psychological Record*, vol. 47, no. 3, p. 411, 1997.
- [12] J. Fortmann, T. C. Stratmann, S. Boll, B. Poppinga, and W. Heuten, "Make me move at work! an ambient light display to increase physical activity," in *2013 7th International Conference on Pervasive Computing Technologies for Healthcare and Workshops*. IEEE, 2013, pp. 274–277.
- [13] L. T. Kozlowski and J. E. Cutting, "Recognizing the sex of a walker from a dynamic point-light display," *Perception & Psychophysics*, vol. 21, no. 6, pp. 575–580, 1977.
- [14] R. Hirschfeld, F. Aghazadeh, and R. Chapleski, "Survey of robot safety in industry," *International Journal of Human Factors in Manufacturing*, vol. 3, no. 4, pp. 369–379, 1993.
- [15] V. V. Unhelkar, H. C. Siu, and J. A. Shah, "Comparative performance of human and mobile robotic assistants in collaborative fetch-and-deliver tasks," in *Proceedings of the 2014 ACM/IEEE international conference on Human-robot interaction*. ACM, 2014, pp. 82–89.
- [16] K. Funakoshi, K. Kobayashi, M. Nakano, S. Yamada, Y. Kitamura, and H. Tsujino, "Smoothing human-robot speech interactions by using a blinking-light as subtle expression," in *Proceedings of the 10th international conference on Multimodal interfaces*. ACM, 2008, pp. 293–296.
- [17] N. J. Currie and B. Peacock, "International space station robotic systems operations-a human factors perspective," in *Proceedings of the Human Factors and Ergonomics Society Annual Meeting*, vol. 46, no. 1. SAGE Publications, 2002, pp. 26–30.
- [18] E. Cha, A. D. Dragan, and S. S. Srinivasa, "Perceived robot capability," in *Robot and Human Interactive Communication (RO-MAN), 2015 24th IEEE International Symposium on*. IEEE, 2015, pp. 541–548.
- [19] M. K. Lee, S. Kiesler, J. Forlizzi, S. Srinivasa, and P. Rybski, "Gracefully mitigating breakdowns in robotic services," in *2010 5th ACM/IEEE International Conference on Human-Robot Interaction (HRI)*. IEEE, 2010, pp. 203–210.
- [20] M. K. Lee, K. P. Tang, J. Forlizzi, and S. Kiesler, "Understanding users! perception of privacy in human-robot interaction," in *2011 6th ACM/IEEE International Conference on Human-Robot Interaction (HRI)*. IEEE, 2011, pp. 181–182.
- [21] K. Kraft and W. D. Smart, "Seeing is comforting: effects of tele-operator visibility in robot-mediated health care," in *The Eleventh ACM/IEEE International Conference on Human Robot Interaction*. IEEE Press, 2016, pp. 11–18.
- [22] H. Lee, J. J. Choi, and S. S. Kwak, "Will you follow the robot's advice?: the impact of robot types and task types on people's perception of a robot," in *Proceedings of the second international conference on Human-agent interaction*. ACM, 2014, pp. 137–140.
- [23] K. Kobayashi, K. Funakoshi, S. Yamada, M. Nakano, T. Komatsu, and Y. Saito, "Blinking light patterns as artificial subtle expressions in human-robot speech interaction," in *2011 RO-MAN*. IEEE, 2011, pp. 181–186.