

# **ICES Technical Report**

## **Running Surface Assessment Technology Review**

DeWitt Latimer IV

Sameer Gujar

James Garrett

Burcu Akinci

Scott Thayer

Chris Paredis

Institute for Complex Engineered Systems

Carnegie Mellon University

5000 Forbes Ave

Pittsburgh, PA 15213

2002-May-16

## **Abstract**

This report summarizes potentially applicable technologies for assessing the surface smoothness of roadway surfaces. Specifically, this report characterizes the manual method, commercial profiling solutions, and LIDAR systems for assessing roadway surface conditions. This report considers the assessment of a closed space, dedicated roadway surface for automated people movers as a basis for evaluation of the systems. The manual method is described as a baseline, from which other potential solutions are considered. A series of questions relating to inspection of the selected surface by commercial instruments is enumerated based on the problem domain and discussion with surface inspection experts. Of seven commercial profilers surveyed, the 4 that most closely fit the requirements are described in detail in the report. A brief overview of LIDAR (light detection and ranging) systems is provided with a brief mention of how to apply the systems to surface assessment. A conclusion reiterates that depending on the length of surface to be inspected and the time after the initial pour, that either the commercial profilers or the LIDAR systems may be the most appropriate.

## Table of Contents

Abstract .....	i
Table of Contents .....	ii
Table of Figures .....	iv
1. Introduction .....	1
2. Manual System .....	4
3. Profilometers .....	6
3.1 Pavement Profile Scanner, Model PPS-2001 (Phoenix Scientific Inc.) .....	9
3.2 Pavedex PAS 1 System (South Dakota type Pavement Profiler system) .....	10
3.3 Paveset Model ES2000 California-type Profilograph.....	11
3.4 LISA (Lightweight Inertial Surface Analyzer) 6000.....	13
4. Laser Range Scanners .....	16
4.1 LARA-200 .....	17
4.2 LPM-100.....	18
5. Conclusions .....	20
6. Definitions & Acronyms .....	24
6.1 Definitions.....	24
6.2 Acronyms.....	25
7. References .....	26
7.1 Bombardier Documents .....	26
7.2 General References .....	26
7.3 Product Information.....	26
Annex A – Profilometer Survey.....	29

A. Auto Rod & Level.....	29
B. Paveset Model ES2000 California-type Profilograph.....	31
C. Pavedex PAS 1 System.....	34
D. PPS-2001.....	37
E. Laser Rut Measurement System.....	39
F. LISA (Lightweight Inertial Surface Analyzer).....	42
G. BUMP INTEGRATOR FOR ROUGHNESS.....	45
Annex B – Profilometer Product Comparison Matrix .....	48

## Table of Figures

Figure 1-1 – The INNOVIA AGT.....	1
Figure 1-2 – Road profile .....	2
Figure 1-3 Elevated and Below-Grade Guideway Modes [1].....	3
Figure 2-1 Pattern of measurements on a running surface [2] .....	4
Figure 3-1 Longitudinal profile from overlapping sections [7] .....	10
Figure 3-2 The PAVEDEX PAS I and pavement crack [8].....	11
Figure 3-3 Paveset Model ES2000 [9] .....	12
Figure 3-4 LISA is highly accurate compared to standard benchmarking methods .....	14
Figure 3-5 Model 6000 LISA [10] mounted on a tractor.....	14
Figure 4-1 Z+F scanner [15] and sample scans {IR reflectivity (left) and range (right)} .....	17
Figure 4-2 Riegl scanner [13] and sample scans from Cheok, etc. report [4].....	19
Figure 5-1 Comparison of single manual versus LIDAR versus LISA systems for road assessment .....	22
Figure 5-2 Items to be developed (top row) verses potential configurations (left column) .....	23

## 1. Introduction

This document covers various technologies that can be employed to determine the surface quality of the running surface for the INNOVIA AGT [Figure 1-1]. This focus on running surface quality inspection was selected through several meetings with Bombardier personnel. The quality of the running surface needed by the INNOVIA system is defined by Bombardier in their guideway specifications [1], which describes profile requirements for the surface, and lead to the development of system requirements for any technology based solution.

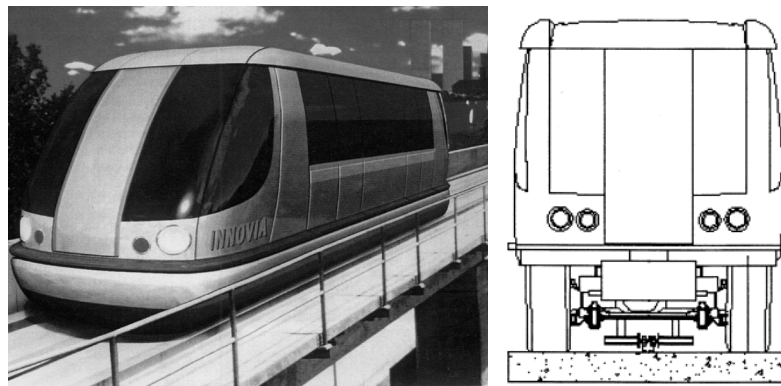


Figure 1-1 – The INNOVIA AGT

The task for which technologies were being selected is surface profiling. Surface profiling is taking a two-dimensional slice, also known as a profile, of a surface along an imaginary line generated by a perpendicular intersection of a plane and the surface of interest [Figure 1-2][4]. When measurements are taken along the imaginary line and are fully accurate and precise elevations for all points along the line, the profile is known as a “true” profile. In general, there is no standard width for the line along which measurements are taken and no defined way to interpret roughness within that line (for example using the average, maximum, or minimum height in the width of the line). By placing many of these lines along the surface,

Bombardier engineers can make predictions about the overall smoothness of the surface and the effects the surface may have on ride quality [1].

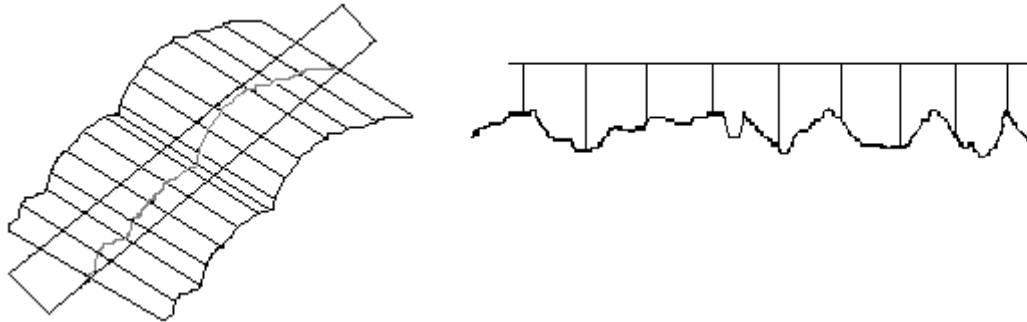


Figure 1-2 – Road profile

The ASTM method for measuring profiles [6] requires for a class I designation that the sampling along the line (longitudinal) be taken at least every 25mm. Further, a class I designation requires that the resolution of the elevation for every point be less than or equal to 0.1mm. These requirements are more stringent than initially set out by the Bombardier requirements [2], which call for the vertical resolution of a class IV profile, yet require the horizontal sampling of a class I instrument.

Beyond measurement accuracy and precision, there are stringent physical constraints on any solution due to the geometry of the guideways. There are 3 modes of guideways: elevated, at-grade, and below-grade. At-grade mode is when the vehicle's path is on the level of the terrain, on the ground. Figure 1-3 illustrates the elevated and below-grade modes. Any system must be capable of being safely operated in any of those modes during the construction process. Also, the guideways considered utilize super elevation and spiraling on turns to minimize movement forces on passengers. Thus, a system must be capable of correctly assessing the smoothness of the road through turns.

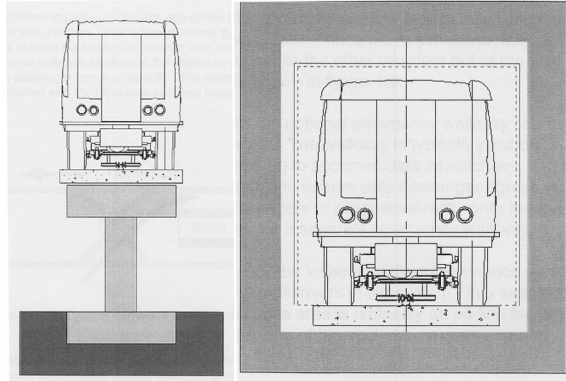


Figure 1-3 Elevated and Below-Grade Guideway Modes [1]

For our purposes, any instrument that is capable of delivering the Bombardier requirements is considered.

This document describes current technical methods to determine surface quality. The manual method is first described to provide a base and frame of reference for other systems. The technologies examined were of two types of systems: commercial off the shelf profiling solutions and LIDAR technologies applied to profiling. Each method is generally described addressing issues such as style of instruments, methods, and staff requirements. Instruments include physical artifacts bought on a per project or capital investment basis. Crew sizes and expertise required is addressed for each system. Finally, for each system, specific concerns are addressed. Such concerns include power consumption, shipping, calibrations, and recurring costs, among others. For non-manual methods, competing instruments are described in further detail where appropriate.



## 2. Manual System

The manual system was described extensively in the requirements document [2], refer to that document for a more extensive discussion of the manual surface assessment process. In general, this method involves two laborers moving a ten-foot (10') straight edge in a pattern [Figure 2-1] along the running surface at the direction of an engineer. The engineer is the person actually responsible for detecting variations in the surface conditions under the straight edge. The engineer also uses a level at various points to aid in determining the nature of any defect discovered. Additionally, the engineer may need access to special forms for measuring smoothness through super-elevated curved sections.

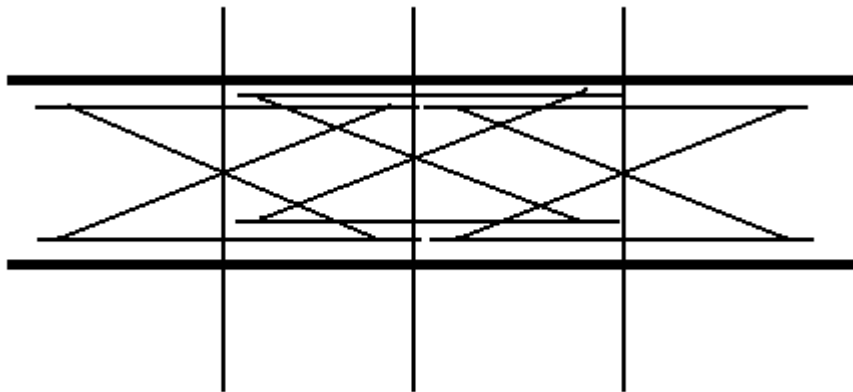


Figure 2-1 Pattern of measurements on a running surface [2]

The following tools are bought independently for each project: aluminum bar (3m), standard level, and level forms for measuring in super-elevation conditions (typically manufactured by the site engineer).

This manual system requires three personnel to operate at maximum efficiency [2]. Two standard field laborers handle the tools directly. An engineer oversees the inspection and

directly makes measurements. This three-person crew can survey the surface on one track at the rate of 100 linear meters per eight-hour shift [2].

This system is fairly straightforward to implement on any site by the engineer. However, as noted in the requirements analysis [2], engineer performance can vary, and there is no guarantee of performance with the human as the primary sensor of the system.

### 3. Profilometers

A profilometer is an instrument used for the direct measurement of the road profile and its roughness. Specifically the profiler produces a “series of numbers related in a well-defined way to the true profile” [4].

Typical instruments in this class perform profiling via several accelerometers [4] in various configurations with other sensing devices. State and international [5] standards systems, developed by commercial companies, exist for testing these systems. With regard to the ASTM standard [6], these systems are based on the use of accelerometers to determine length synchronous changes in elevation. As such, these devices typically have a minimum speed at which they must be operated for the accelerometers to be effective in meeting the standard. In many cases this minimum speed may be too great for operation in elevated guideway modes before the completion of construction. Instruments have been annotated as to their known minimum speed.

The accelerometer basis has some undesirable side effects in various guideway modes, such as super-elevated turns. An accelerometer-based device entering a super-elevated turn will perceive an upward motion due to the forces in action. Thus, the guideway will appear to the instrument to have gained elevation much greater than actual. Further, the same instrument leaving the guideway will perceive a downward motion; thus the guideway will appear to have lost elevation. Because part of the purpose of this device is to model the guideway in an effort to detect variations, the instrument cannot use the design model in an effort to reconcile super-elevated turns. The problem arises when there is a mismatch between the measurement of the super-elevated turn and the design; this problem cannot be resolved solely through the two instruments. However, it must be noted that not all profilometers report solely road profiles;

some report summary statistics that are immune or less affected by super elevation on turns than a straight profile index.

Another general concern with profilometer instruments is their physical form factor. In super-elevated turns, profilometers with fixed bases may not be capable of performing an evaluation. Utilizing a hybrid system, such as manual methods for the turns and profilometers for straight sections is dubious. Bombardier engineers estimate that 50% of the linear miles of an example project presented by Bombardier (the AGT at Dallas-Fort-Worth Airport) is turns. Further, even average projects involve at least one turn. Further analysis into the characteristics of future expected jobs would need to be performed to determine economic viability. However, it is clear that fixed base system is not generally applicable to the required Bombardier solutions.

Several profilometers were surveyed. All profilometers surveyed claimed ASTM class I profiling performance. Three exemplar systems are discussed in detail here in this section. Details of the metrics collected about all the profilometers surveyed are contained as an annex to this report. Fifteen (15) system properties in 4 areas were distilled down from requirements analysis phase [2].

### **General Overhead Considerations**

1. **System transportation** – This addresses transport of the system between sites and/or a storage facility, including any “one-time-on-site” calibration that may need to be done for the system. Includes any locally purchased components needed by the system.
2. **Maintenance of instruments** – Types of maintenance that need to be performed and their frequency, including any in-field calibrations that need to be performed.
3. **Storage of instrument** – Special arrangements/costs for storage.
4. **Power** – If the system is powered, this is a description of the type and delivery of power to the system.

5. **Cost of Instrument** – Cost of the system detailing single unit purchase and volume discounts, if available.

### **Physical Instrument**

6. **Surface loading** – Due to a desire to evaluate the concrete before curing has completed, Bombardier has indicated that a surface pressure of greater than 20 pounds-per-square-inch is not allowable.
7. **Environmental Conditions** – Variable environmental conditions such as temperature, humidity, and dust exposure are reasonable to expect in construction. The desired system must handle temperature ranges of –10C to 40C with a max 95% non-condensing humidity. Further, the system should be NEMA IV certified, or an enclosure created. NEMA IV is a standard for quality enclosures that can be used to judge the encasement of electronics against exposure to dust and other environmental hazards.

### **Field Performance**

8. **System operations** – Can the system operate at safe speeds? Can the system handle all guideway modes (curved, super elevated, above grade, at grade, below grade)?
9. **Assessment time** – (300 linear meters of track) This is the baseline unit of measurement that will be considered to judge differences between systems.
10. **Mean time between failures (MTBF)** – If the meantime between failures is known, then that is given. If not, then any warranties supported by the company will suffice to indicate the system's expected life. A MTBF of 4000 hours is desired by Bombardier.
11. **Detection tolerance** –The accuracy and precision of the measurements.
12. **Measurement pattern** – In what physical pattern over the surface does the system take samples.

### **System Interface**

13. **Output method** – Discusses the format that output from the system is communicated to the user
14. **Determination of high and low surface areas** – Does the system provide a 2-D view of the surface annotated for high and low regions of the surface?

15. **Catastrophic event notification** – Specifically, does the system notify the user in the event the system is not functioning or significantly out of tolerance?

### **3.1 Pavement Profile Scanner, Model PPS-2001 (Phoenix Scientific Inc.)**

The core of PSI's innovative measurement technology is a phase-measurement Laser Radar (LADAR). A scanner is used to point the LADAR measurement system (see section 4 for a more general description of LADAR/LIDAR systems) at points along a straight line on the surface, thereby scanning a line and generating the profile along the line. At 10,000 RPM the system can generate up to 1,000 scans per second. With the scanner mounted 7 feet above the pavement, the  $\pm 45^\circ$  field of view produces a profile 14 feet long.

More than one scanner can be operated from a vehicle at one time to perform integrated functions by scanning transversely and longitudinally at the same time. A scanner can easily be reconfigured for different purposes, such as longitudinal, transverse, or diagonal lines along the surface.

The orientation of the rotational axis determines how the scan lines are positioned on the pavement. The two standard installations are where the rotational axis is aligned with the axes, which are orthogonal to the direction of travel. This produces transverse and longitudinal scans as the pavement-testing vehicle is driven along in-service roads. Full lane and shoulder coverage is accomplished with no hardware extending beyond the vehicle.

The system is controlled by a standard desktop-style computer which also takes care of data archival.

Of note for this system is the minimum operational speed of 15 mph, which may not be a safe speed for operation on elevated guideway modes.

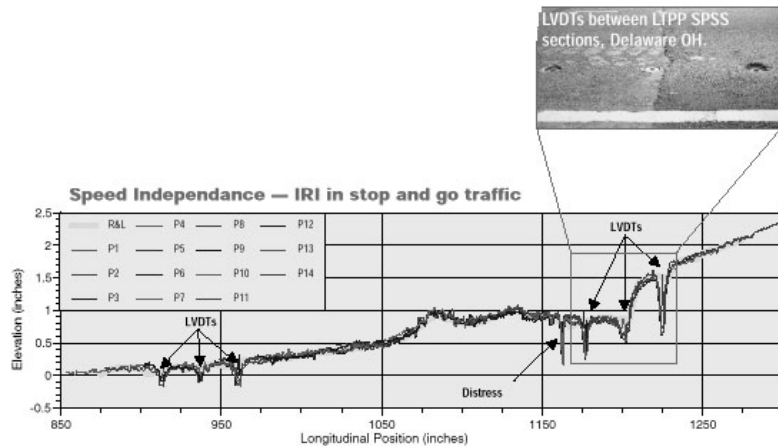


Figure 3-1 Longitudinal profile from overlapping sections [7]

Maintenance of the device consists of an annual factory calibration and window cleaning as required.

On-site calibration time is 20 min.

### 3.2 Pavedex PAS 1 System (South Dakota type Pavement Profiler system)

The sensors are mounted in a custom-designed front bumper of the survey vehicle. A laser sensor and an accelerometer are mounted over each wheel path and three ultrasonic sensors are mounted: (1) at a point midway between the two wheel paths; (2) at a point outside the left wheel path; and, (3) at a point outside the right wheel path. Each of the outside sensors are the same distance from their respective wheel path sensors (An option is available for 5 additional ultrasonic sensors which will provide a more detailed transverse profile of the roadway in addition to rut depth and ride roughness measurements). The linear servo accelerometers measure the vehicle's vertical acceleration (due to changes in vertical roadway profile) at each wheel path and determine the vehicle's vertical position by numerically integrating the measured

vertical acceleration signal. The laser and ultrasonic sensors measure the height (distance) between the vehicle body and the pavement surface. The laser sensors beam a 1 to 2 mm footprint on the pavement, sampling at 32,000 times/second. This provides a sample every 1mm at 60 mph. The road profile is computed as the numerical difference between the vehicle's vertical position and the height (distance) between the vehicle body and the pavement surface.

An on-board computer controls the operation of the equipment.

Of note in this system is only mounted on a van format, which may not be a feasible for elevated guideway modes. Also, the company did not respond to a request to verify the minimum assessment speed.

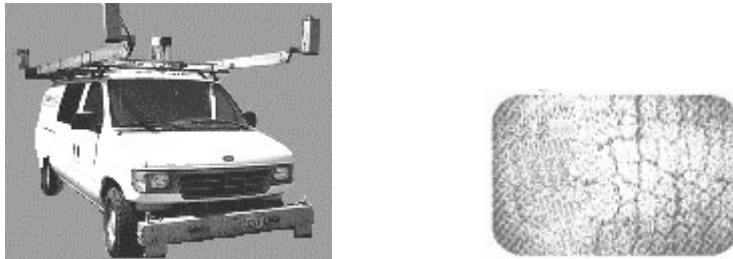


Figure 3-2 The PAVEDEX PAS I and pavement crack [8]

Maintenance involves cleaning of sensor faces at setup time. On-site setup and calibration time less than 30-Min. [8]

### **3.3 Paveset Model ES2000 California-type Profilograph**

The primary sensing technology for this system is a series of styli that mechanically sample along the road and return an analog signal. That signal is then used in the generation of



the profile along the line the stylus sampled. The styli are mounted on a trailer. This model is a towable, dual wheel path machine employed to measure surface smoothness after project completion. Trailer mounted and can be towed by any vehicle with a 2" ball hitch.

Utilizing a laptop computer supplied with the unit, data is collected. Requires only one person to operate with the laptop beside him in the towing vehicle.

Of important concern is the physical form of this system, as evidenced in figure 3-3. This fixed system may not be capable of resolving profiles in super-elevated turn guideway modes.

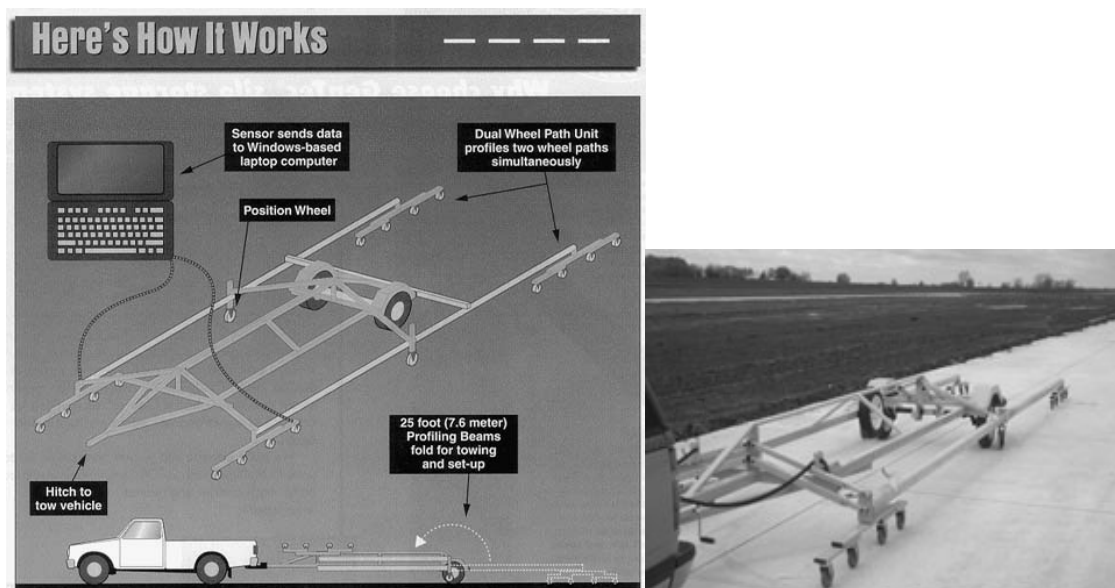


Figure 3-3 Pavaset Model ES2000 [9]

Basically maintenance is free; grease hinge points every 2 months; check bolts for tightness; keep control box and laptop computer secure

On-site calibration time is 5 minutes to calibrate both sides (sensors).

Takes about 15 minutes total to setup the unit and be ready to run.

One system is installed for PennDOT [9] (Pennsylvania Department of Transportation).

### **3.4 LISA (*Lightweight Inertial Surface Analyzer*) 6000**

LISA is delivered as an integrated package of sensors and transport and includes software for analysis. The sensors are highly accurate, precise, and repeatable. The transport is rugged and can stand up to being transported between several sites. Finally, the software offered with the system enables early analysis.

The sensing technology is based on an analog, as opposed to digital, implementation of the profile standard. This analog signal can be processed more accurately and precisely than those which analog-to-digital converters have discretized. Sensors over both wheel paths can determine a wide variety of ride statistics, the traditional profile, the ride number, ride quality index, or other metrics. The metrics collected by this system are very accurate and precise with respect to reference benchmarking. One benchmarking, demonstrated by the state of Illinois, showed the LISA to be comparable to the reference terrain map [figure 3-4]. Also as can be observed in figure 3-4, the LISA is a highly repeatable instrument, several runs of the instrument return very similar results. Further, this instrument can operate through elevated curves through the proper setting of band-pass filters. Indeed, any effects noted by the system in the curve would not affect either the ride-ability statistics or the simulation analysis.

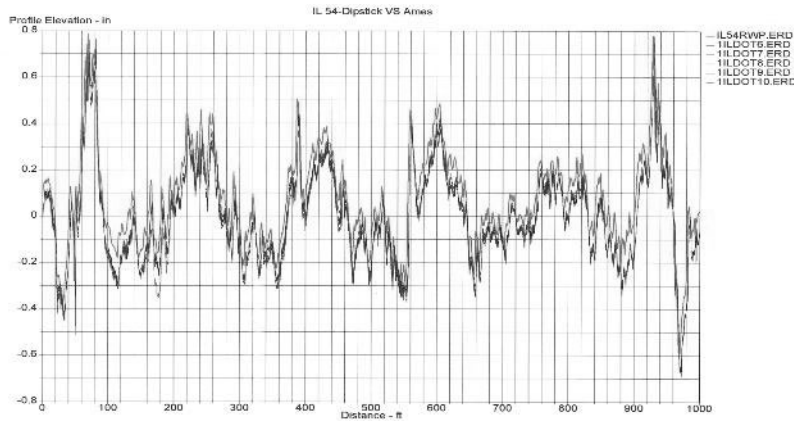


Figure 3-4 LISA is highly accurate compared to standard benchmarking methods

An on-board computer controls the operation of the equipment. However, the real power of this system comes from off-board processing. Vehicles can be modeled as half-car and quarter-car systems. Then the model can simulate driving over the collected data to simulate ride quality tests of the actual vehicle. This would be highly desirable for Bombardier, as this simulation can be performed before the installation of the guidebeam.

The system's sensors by default are mounted on a John Deere™ tractor [figure 3-5] and can be placed in wheel paths from 3-6 feet apart. Larger separation distances are possible for only a small increase in the cost of the system.



Figure 3-5 Model 6000 LISA [10] mounted on a tractor

This system is able to perform in all guideway modes and provides integrated software for analysis. One concern would be tying in the software of this package into a larger project management system. However, since software interfaces were not requested, this only remains an unknown at this point. Also, while the system does provide longitudinal profiles, it does not provide diagonal or transverse profiles. But, due to the established correlation between the metrics provided by this system and rider satisfaction on road surfaces, the transverse and diagonal profiles may not be required for effective analysis.

## 4. Laser Range Scanners

Laser ranging devices (also known as LADAR – LAsER Detection and Ranging or, more generally, LIDAR – LIght Detection And Ranging) that are capable of being scanned over an area can generate very dense point elevation maps of surfaces [3]. The LARA-200 and LPM-100 LIDAR scanners are similar in a number of ways; their major difference being in their fields of view.

LIDAR systems operate by measuring time of flight and phase differences in a light signal reflected by a target. The two systems featured in this report both use infra-red coherent light (laser). The measurement returned consists of the range calculated from the time of flight and phase difference and the intensity of the reflected light (which is also typically returned with the measurement). This measurement, when repeated at various bearings and azimuths can provide a sample of 2.5 dimensional [3] points (integrating bearing, azimuth, and range gives a point in Cartesian 3-space). These points can then be meshed into a surface [3] via several standard techniques and even cross-registered without further field calibration.

Typically these systems require one site engineer with surveying skills in the field.

These systems can be moved between scanning stations fairly easily. Each scanning station only takes minimal time to set up, as precise leveling or pre-scan registration is unnecessary. Typically scans can be registered against each other to create a single set of scan points all referenced to one local coordinate system. Since the profiling requirements are local in nature, there may be no need to register the scans, nor the combined scans, to the site coordinate system (although technologies to do this are available).

As the system is not self-contained, power needs to be delivered in the field through a battery, land power, or a generator. Generally these systems do not take a large amount of power

to operate, and can easily draw their power through a standard wall outlet (20Amps). Although, these systems may be rented, Bombardier would encounter the same availability issue as profilometers, and thus purchasing the LIDAR Scanner would be more likely.

#### **4.1 LARA-200**

The LARA-200 by Z+F [11] utilizes a spinning mirror with a LIDAR device to give the range to a surface (with some reflectivity) along some bearing and azimuth from the instrument. This instrument returns a raster scan of ranges, angles (two), and reflectivity for each point in the set along a 360-degree by 60-degree field of view about the theoretical center instrument's spinning mirror [12].

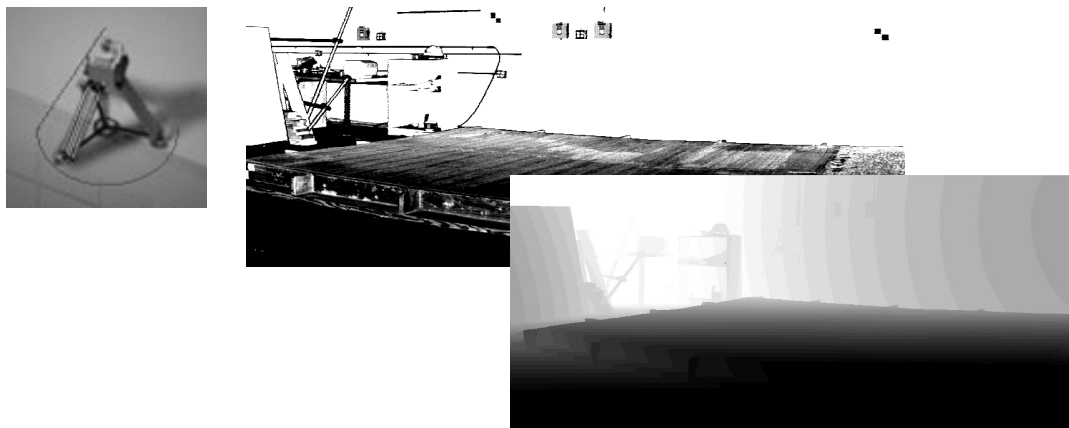


Figure 4-1 Z+F scanner [15] and sample scans {IR reflectivity (left) and range (right)}

## **4.2 LPM-100**

The LPM-100 by Riegl [13] utilizes a pan-tilt mount for a single-point LIDAR device (similar to their LD-90) to give the range to a surface (with some reflectivity) along the bearing and azimuth provided by the actuating joints. The instrument can give variable field of views from just a single point at a specific bearing and azimuth, to up to a 180-degree by 150-degree field of view [14]. Figure 4-2 shows what is meant by the “field of view” of the scanner.

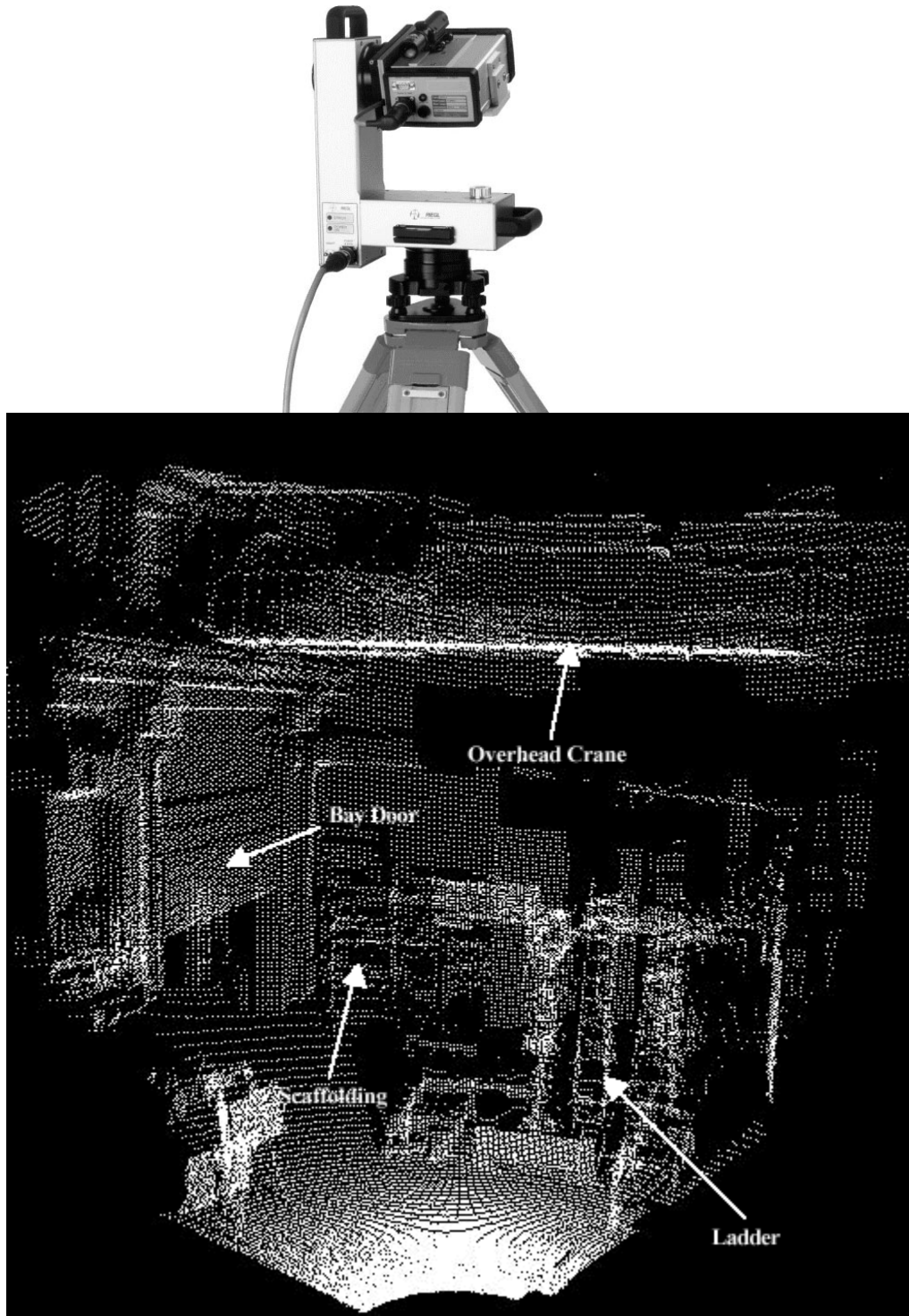


Figure 4-2 Riegl scanner [13] and sample scans from Cheok, etc. report [4]



## 5. Conclusions

Based on the three technologies described in this report there are two options for Bombardier to utilize in their surface quality assessment activities. Each method has different levels of benefits, costs, limitations, and risks to Bombardier. Obviously, the first option would be to maintain the current, manual method of surface assessment. The benefit of this system is that the process is already well defined in the processes for guideway assessment, and the cost to deploy the system is minimal in terms of instrumentation. However, the method is very slow, time-consuming for Bombardier paid personnel, and the results vary by inspector. Indeed, the upcoming Dallas-Fort Worth airport AGT track of 10-miles is estimated to take one-half an engineer year to inspect the running surface. This manual technology will provide the baseline from which other technologies are compared.

Another option beyond COTS systems would be to utilize a LIDAR system, such as the Z+F or Riegl scanners. The instruments are much more costly than the manual practice; system cost about the same as COTS profilometers. A LIDAR system could scan 70-200m of track at one time, thus greatly reducing the personnel time requirements for the assessment activity, but probably still slower than the COTS systems. This approach is flexible with respect to the start time of assessment, as the measurements are non-contact. In fact, the assessments could be done multiple times starting during the finishing process (before the concrete has cured) until the end of the curing at 28-days. Early detection of potential faults during finishing may be fixed more easily than waiting for later detection. However, this system does not yet possess software capable of performing profile analysis, and such software would have to be developed. This system could meet the optional requirement of checking guidebeam alignment if additional software was written to analyze LIDAR data. In both cases, this could cause this system to cost

approximately double the instrument price in software development effort. Care must be taken with these systems, as they may be sensitive to heavy dust in the environment (although current evaluations are being undertaken at the National Institute of Standards and Technology to determine the impact of dust and other environmental considerations on the LIDAR devices [4])

The next option, utilizing a commercial off-the-shelf (COTS) profilometer solution, appears attractive, but is actually not a usable solution. These solutions are significantly more expensive than the manual method in instrumentation. However, most of these systems could collect data for the largest running surface in just a day or two. Of all the profilometers surveyed, LISA seems to meet most of the Bombardier requirements. However there are some limitations for this system. First, the system would require a great deal of modification to check guidebeam alignments. Further, the LISA does not actually generate a list of “must grind” locations. However, such a detection capability could be extracted from the data.

Both the COTS (LISA) and the LIDAR system have two similar issues with respect to the Bombardier requirements for guideway assessment. First, neither system supports direct physical marking of the concrete at problem areas. This is an issue as the amount of time taken to relocate defects from benchmarks can be time consuming and requires a larger manual team. The manual solution handles physical marking while inspecting, or bringing corrective measures to bear immediately before continuing the evaluation. Second, neither system currently handles the types of reports desired by Bombardier. The reports were designed for the manual solution; thus the reports are already well integrated with the manual solution.

These technologies are generally different in their mode of operation. Generally the LIDAR system option is superior to the manual option both in area covered over time and by allowing an earlier start to the assessment process. The LISA option may not allow an early start,

but for tracks of great length, this option may be superior, as it could scan even the largest of Bombardier guideways in one day. Figure 5-1 illustrates this tradeoff between the three systems when comparing one of each system operating on a guideway. Note that the use of multiple systems or other system designs is not considered in this graphic.

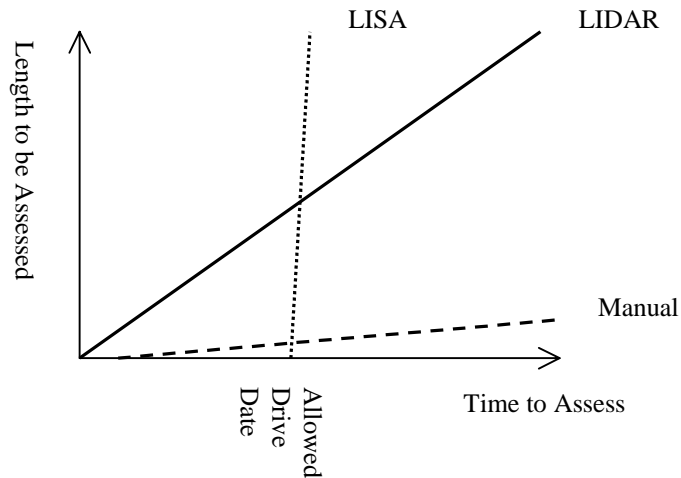


Figure 5-1 Comparison of single manual versus LIDAR versus LISA systems for road assessment

Since no one system covers all requirements, a system design needs to be considered to achieve the requirements. There are two technical options that arise from these technologies. The LIDAR technologies could be developed to perform the surface evaluation and the guidebeam alignment checking and combined with a light projection system (similar to the projection system used by the demining project at Carnegie Mellon University) to aid in placing physical markers. The COTS profilometers could be modified to have physical marking and guidebeam alignment modules on the vehicle carrying the profilometer. In both cases, software will need to be designed to provide an interface from the field instrumentation to the office to

generate the reports required by Bombardier. Figure 5-2 compares the different options for development.

	Interface Software	Surface Analysis Software	Guidebeam Measurement Device	Guidebeam Measurement Software	Physical Marking System
Profiling alone	Yes	No	No	No	Yes
Profiling with Guidebeam	Yes	No	Yes	Yes	Yes
LIDAR with Guidebeam	Yes	Yes	No	Yes	Yes

Figure 5-2 Items to be developed (top row) versus potential configurations (left column)

The next step is to perform a system design that takes into account cost-benefit trade-offs in the various potential configurations.

## 6. Definitions & Acronyms

### 6.1 Definitions

**Centerline** (guideway) – The theoretical design line about which the vehicle clearance envelope, guide rail, station alignment, and other features are registered.

**Contractor** – refers to the successful bidder who shall perform the actual construction work or his properly designated representative. [2]

**Design Line** – See Centerline

**Engineer** – refers to the Design Form or other properly designated representative that is retained by the successful bidder, a.k.a. the “CONTRACTOR.” [2]

**Guideway** – refers to the steel wide flange beam and the guide beam supports located on the running surface aligned along the centerline of each guideway.

**Level (Instrument)** – A device capable of determining if a plane or a line is at right angles to a plumb.

**Profilometer** – A profilometer is an instrument used for the direct measurement of the road profile and its roughness.

**Running Surface** – refers to the concrete slab and embedded steel located on top of the guideway serving as the contact surface for the transit vehicle’s drive tires. [2]

**Straight Edge** (Instrument) – As described by Mike Rura, a extruded square aluminum bar, 10’ long with minimal variation along its length.

## **6.2 Acronyms**

**AGT** – Automated Guideway Transit (system)

**APM** – Automated People Mover (system)

## **7. References**

### **7.1 Bombardier Documents**

[1] “Innovia Guideway Design Criteria”, Revision Q, Jan 23 2001. Internal Bombardier document.

### **7.2 General References**

[2] Latimer, Garrett, Akinci, Thayer, Paredis, “Requirements Analysis & Design Exploration of an Automated System for Running Surface Assessment”, ICES Technical Report

[3] Cheok, Lipman, Witzgall, Bernal, Stone, “NIST Construction Automation Program Report No. 4: Non-Intrusive Scanning Technology for Construction Status Determination”, National Institute of Standards and Technology (NIST) Internal Report 6457, January 2000.

### **7.3 Product Information**

#### **7.3.1 Profilors**

[4] Michael Sayers, Steven Karamihas, “Little Book of Profilors”,  
[http://www.umtri.umich.edu/erd/roughness/lit\\_book.pdf](http://www.umtri.umich.edu/erd/roughness/lit_book.pdf), September 1998, viewed 2002-March-04

[5] “Guidelines for Conducting and Calibrating Road Roughness Measurements.” World Bank Technical Paper Number 46, (1986) 87p.

[6] E950-98, “Standard Test Method for Measuring the Longitudinal Profile of Traveled Surfaces with an Accelerometer Established Inertial Profiling Reference”, Annual Book of ASTM Standards, American Society for Testing and Materials, 1998

[7] <http://www.phnx-sci.com/images/pdf/broc.pdf>, “”, Online brochure from Phoenix Scientific, viewed 2002-March-04

[8] <http://www.pavedex.com/>, “PAVEDEX”, Website for PAVEDEX, viewed 2001-December-09

[9] <http://www.pavesmart.net/>, Website for Pavesmart, viewed 2002-March-04

[10] <http://www.amesengineering.com/ameslisa.htm>, “Ames Engineering Laser Profiler”, viewed 2002-March-04

### 7.3.2 Laser Range

[11] <http://www.zf-usa.com/>, “Z+F USA, Inc.”, Website for Z+F, viewed 2002-March-04

[12] Technical documentation for LARA 200, provided by Z+F USA, Inc.

[13] <http://www.riegl.com/>, “RIEGL Laser Range Measurement Systems”, Website for Riegl, viewed 2002-March-04

[14] Technical documentation for Riegl 98, provided by Riegl.



[15] <http://www.quantapoint.com/>, "Quantapoint", Website for Quantapoint, viewed 2002-

March-04

## **Annex A – Profilometer Survey**

### ***A. Auto Rod & Level.***

#### 1 – System Transportation

No Special care required. We ship by Fed EX frequently. Not unless damaged.

#### 2 – Maintenance of Instrument

Routine Maintenance: Units are extremely reliable. Calibration is automatic. This system uses an external rotating laser for horizontal reference.

#### 3 – Storage of Instrument

Small locker

#### 4 – Power

Powered by 12 VDC

#### 5 – Cost of Instrument

\$28000

#### 6 – Surface Loading

$\leq 20$  psi

#### 7 – Environmental conditions

Unit uses either standard laptop or Militarized computers. All other components meet or exceed NEMA 4. Can operate -10C to 40C up to 95% humidity (non-condensing)

#### 8 – System operation

Walking speed. A base station for a rotating laser beacon must be established off the road surface. Appears to be capable of functioning on all guideway modes.

#### 9 – Assessment Time

We survey a 10,000-foot runway in one hour

#### 10 – MBTF

Unknown

#### 11 – Detection tolerance

1/8" absolute

#### 12 – Measurement Pattern

Elevation along a line longitudinally

#### 13 – Output Method

Data errors are displayed as comments in the output data file

#### 14 – Determination of high and low surface areas

Yes, we measure true profile with respect to sea level

15 – Catastrophic event notification

Are brought to the attention of the operator – means unknown.

References:

Tony Gerardi

APR Consultants Inc.

937.849.6795

Medway Ohio.

tgg@aprconsultants.com

www.aprconsultants.com

***B. Paveset Model ES2000 California-type Profilograph.***

1 – System transportation

System requires container transport for overseas deployment, can be driven or shipped within the US.

Trailer mounted; towed by any vehicle with a 2" ball hitch; self-contained; no special care req'd;

calibrate 1X, vertical @ project site-takes about 5 minutes to calibrate; takes about 15 minutes

total to setup the unit and be ready to run contacting the surface, reports PSI

In field calibration is 5 minutes to calibrate both sides (sensors).

2 – Maintenance of instruments

Basically maintenance free; grease hinge points every 2 nos; check bolts for tightness; keep control box and laptop computer secure

### 3- Storage of instrument

Requires garage.

### 4 – Power

System operates off 12volt towing vehicle battery- plugs into cigar lighter for power

### 5 – Cost of Instrument

\$40,000.00 US to \$45,000.00 US depending on the options selected (plus freight).

### 6 – Surface loading

Unknown.

Vendor response: N/A, our system is not using inflatable wheel.

### 7 – Environmental conditions

0 to 40C; does not meet temperature requirements. 95% non-condensing humidity okay.

Unknown if NEMA IV enclosed.

### 8 – System operations

Yes. It is a 25' rolling straightedge towed behind a vehicle that collects both wheel path surface deviations PLUS cross fall % of the surface in the running lane

3mph/5kmh travel speed in operation. The system is towed.

9 – Assessment time

Yes, we operate per ASTM E1274. 3mph/5kmh travel speed in operation

10 - MBTF

We have had no major problems (vendor indicated that 4000 hours was reasonable)

11 – Detection tolerance

1/8", yes, we test and meet State DOT requirements.

12 – Measurement patterns

Multiple longitudinal elevation paths

13 – Output method

PRI Summary/Plots of Traces/Must Grinds are all output. System ids the bumps by station  
outside tolerance

14 – Determination of high and low surface areas

Can identify both high & low based upon parameters entered (grinds & fills)

15 – Catastrophic event notification

The operator has the laptop beside him in the towing vehicle w/program operating so he would notice any problem right away.

References:

Steve Dunn

PaveSmart with Paveset

(800) 719-7283

sbdunn@msn.com

www.pavesmart.net

### ***C. Pavedex PAS 1 System***

1 – System transportation

Fixed mounted on vehicle. Covers placed on instrument faces. On site setup and calibration time less than 30 Min.

On-site calibration time is ten minutes.

2 – Maintenance of instrument

Cleaning of sensor faces at setup time

3 – Storage of instrument

Garage for vehicle.

4 – Power

110(60Hz)

5 – Cost

Unknown

6 – Surface loading

½ ton van for delivery system typical. Able to deploy on custom system to meet specific need.

7 – Environmental conditions

35F to 100F; no. 95% humidity non-condensing okay. Unknown if NEMA 4 is or can be offered.

8 – System operation

Unknown speed. System is van mounted. Does not appear to require a linear axis.

9 – Assessment time

Driving traffic speed. Post process time dependent on computer speed. Minutes per Hour

10 – MBTF

Unknown

11 – Detection tolerance



Can achieve 1/8" +- 1/32" in 10' at Hi way speed

12 – Measurement pattern

Unknown.

13 – Output method

Unknown

14 – Determination of high and low surface areas

Vendor indicated that “profiles shows”

15 – Catastrophic failure

Computer on screen fault alarm. Sensor out of range and program failure alarms.

References:

Jim

9922 E. Montgomery Ave.

Suite 14A

Spokane,

Washington 99206

509.922.4090

jim@pavedex.com

www.pavedex.com

**D. PPS-2001.**

1 – System transportation

Field Performance Checks Available. 2-D mapping system, vert. Acc. Manufacturing 4 units  
right now acc. to specifications.

In field calibrations 20 min.

2 – Maintenance of instruments

Annual Factory Calibration. Window Cleaning as required.

3 – Storage of instrument

Large garage for trailer system; possibly smaller for custom system.

4 - Power

Unknown

5 – Cost of instrument

\$150K/device. \$99 K / 5

6 – Surface Loading

Depends on transport system; typical trailer mount (for tractor) would be too great; but alternate  
transport systems can be evaluated. N/A

#### 7 – Environmental conditions

Temperature range of –10C to 40C at up to 95% non-condensing humidity is okay. NEMA 4 enclosures available.

#### 8 – System operations

15-20 mph minimum speed. System can be mounted in alternate configurations; typical mounting is in a towed trailer. Can operate in all guideway modes.

#### 9 – Assessment time

Can assess at up to 60 mph

#### 10 – MBTF

At least 4000 hours

#### 11 – Detection tolerance

Easily meets 1/8", near absolute

#### 12 – Measurement pattern

Series of correlated transverse path profiles.

#### 13 – Output method

Software devpd.

14 – Determination of high and low surface areas

Yes, through provided software

15 – Catastrophic events

Yes, user is notified through software

References:

Bill

William J. Herr

Phoenix Scientific Inc.

1790-104 La Costa Meadows Drive

San Marcos, CA 92069-5177

760.471.5396 Fax: 760.471.5397

Email: wherr@phnx-sci.com

www.phnx-sci.com

### ***E. Laser Rut Measurement System***

1 – System transportation

Sensors are shipped in protective enclosure. Recalibration is not needed. Lateral profiles not longitudinal

No on-field calibration is required. Calibration can be check on field using a calibration object.

Time < 5min.

2 – Maintenance of instrument

Recalibration recommended on a yearly basis

3 – Storage of system

Locker for sensors; garage for an integrated vehicle

4 – Power

110(60 Hz)

5 – Cost of instrument

\$ 85,000 US

6 – Surface loading

Not applicable (OEM component to be added to transport)

7 – Environmental conditions

-10C to 40C at up to 95% non-condensing humidity okay; NEMA 4 containing available

8 – System operations

No minimum speed, maximum over 100kph. System is scans continuously. System is an OEM component that can be mounted on about any transport system. Does not appear to need a linear axis.

Super elevations and curves ok. System is component to be mounted on transport.

9 – Assessment time

3D lateral profile acquisition is done in real-time. Surface sampling dependent on transport.

10 – MBTF

System is guaranteed 1 year. Hours of operation in that year are not relevant to warranty.

11 – Detection tolerance

3D accuracy is  $\pm 1$ mm.

12 – Measurement pattern

Lateral profile only, longitudinal correlation done by transport, not component.

13 – Output method

Software interface and printouts generated by system.

14 – Determination of high and low surface areas

Not with provided corporate information – unknown if software provides for that function.

15 – Catastrophic Events

Several error codes are generated by the system

References:

John Laurent, M.Sc., P.Eng.

Head, Industrial Vision and 3D Sensors

INO

2740, rue Einstein

Sainte-Foy, (Québec)

G1P 4N8

CANADA

Tel: (418) 657-7006

Fax: (418) 657-7009

Web: <http://www.ino.ca>

Email: laurent@ino.ca

***F. LISA (Lightweight Inertial Surface Analyzer)***

1 – System transportation

Mounted on John Deere Gator (4\*2). Transport in enclosed trailer. Recalibration once a year if needed.

Certification can be done as needed. Bounce test and Cal. Block plus odometer check

2 – Maintenance of instruments

Yearly tune up if needed. Check vehicle as per manufacturer.

3 – Storage of instrument

Garage for towed portion

4 – Power

12 Volt vehicle supply

5 – Cost of instrument

\$34,000 for single track

\$42,000 for dual track

6 – Surface loading

10 PSI in rear wheels and 10 PSI in front

7 – Environmental conditions

-10C to 40C at up to 95% non-condensing humidity okay; NEMA 4 enclosure available

8 – System operation

Travels 8-12 mph. Towed system.

Very agile, can perform all operations on an all terrain vehicle. Process flattens super elevations as per Class 1 profilometers

9 – Assessment time

Travels 8-12 mph. Does one or two wheel path profiles



10 – MBTF

Vehicle as per manufacture. Electronics~20,000 hrs.

11 – Detection tolerance

0.005" resolution

12 – Measurement pattern

Longitudinal, width can be custom created – 6-foot adjustable width is standard

13 – Output method

All Outputs of a Class 1 profile device. IRI, RN, PI, ROI and California Profilograph plots and output.

14 – Determination of high and low surface areas

Not directly, produces an accurate vertical profile as per Class 1 profilometers which can be transformed into must-grind/fill reports

15 – Catastrophic events

All critical sensors are monitored at all times. Operator is notified by computer monitor

References:

John Darlington

Transology Associates

2132 Dean Ave.

Holt, MI 48842

517.694.8645

darlingtonj@acd.net

### ***G. BUMP INTEGRATOR FOR ROUGHNESS***

Instrument Features: Transverse P/file. Video logging. GPS. Road geometry.

#### 1 – System transportation

Equipment can be fitted to any vehicle. No more care than the host vehicle requires. Recommend calibration Checks on a 1-2 month interval depending on surface being surveyed-sealed/unsealed.

On filed calibration should be a once off operation per year. Followed by a monthly check over the site to ensure that there are no changes in the equipment taking a couple of hrs. Profiling with a class1 profiler takes about 1 day per site; we suggest 3 - 4 sites covering required IRI. This should be standard for any system. 5 runs at each site can be completed in 1-day, analysis 1 day.

#### 2 – Maintenance of instruments

In combination with calibration checking requirements. Review of vehicle suspension.

#### 3 – Storage of instrument

Garage for integrated vehicle.

4 – Power

12 Volt DC from host vehicle

5 – Cost of instrument

\$10,000-\$40,000 depending on extent of systems added

6 – Surface loading

Unknown

7 – Environmental conditions

-10C to 40C at up to 95% non-condensing humidity okay; vendor doesn't know if NEMA 4 enclosures are available.

8 – System operations

Unknown speed (although from above comments, minimum speed appears to be acceptable for Bombardier application).

Yes. Gyros and inclinometers can be fitted to measure these parameters.

9 – Assessment time

It only takes a few minutes to drive 300m.

10 – MBTF

Unknown

11 – Detection tolerance

Unknown. The TPL can measure to less than 1mm.

12 – Measurement pattern

Unknown

13 – Output method

Rating system available Video system also Combined with DMI and GPS system.

14 – Determination of high and low surface areas

Unknown

15 – Catastrophic events

Trained Operators should be able to ensure this is detected/ eliminated

References:

Doug Brown

Manager, DCL

doug.brown@actrix.co.nz

## Annex B – Profilometer Product Comparison Matrix

Products → Requirements↓	A	B	C	D	E	F	G
1	Small item	Container/ Tractor	Container/ Tractor	Container/ Tractor (is trailer)	Small item (drivable vehicle)	Container/ Tractor	Container/ Tractor
2	Minimal	Minimal	10-30min	20 min	Recalib. Yearly	Recalib. Yearly	Monthly check & Yearly Recalib.
3	Locker	Garage	Garage	Lg. Garage	Locker (Garage)	Garage	Garage
4	Shore	Vehicle	Shore	Unknown	Shore	Vehicle	Vehicle
5	\$28k	~\$40k	Unknown	\$150k	\$85k	\$42k	\$10-\$40k
6	<=20psi	Unknown	Unknown	N/A	N/A	OK	Unknown
7	OK	0-40C only	35F-100F only	OK	OK	OK	NEMA Unknown
8	OK	OK	Unknown	Unsafe Speeds (15 mph min)	OK (needs navigation system)	OK	OK
9	10k linear foot/hr	3mph	Unknown	60 mph	N/A	8 mph	Unknown
10	Unknown	OK	Unknown	OK	1 year	OK	Unknown
11	OK	OK	OK	OK	OK	OK	Unknown
12	Longitudinal	Multiple Longitudinal	Unknown	Sampled Surface	Transverse	Longitudinal	Unknown
13	Data file	Printout & file	Unknown	Software	Printout & files	Printouts	Unknown
14	No	Yes	No	Yes	Unknown	Somewhat	Unknown
15	Unknown	Yes	Yes	Yes	Yes	Yes	No

Key:

Products:

- A: Auto Rod & Level.
- B: Paveset Model ES2000 California-type Profilograph.
- C: Pavedex PAS 1 System
- D: PPS-2001
- E: Laser Rut Measurement System
- F: LISA (Lightweight Inertial Surface Analyzer)
- G: Bump Integrator for Roughness

Requirements:

- 1: System Transportation
- 2: Maintenance of Instrument

3: Storage of Instrument

4: Power

5: Cost of instrument

6: Surface loading

7: Environmental conditions

8: System operations

9: Assessment time

10: MBTF

11: Detection tolerance

12: Measurement Pattern

13: Output method

14: Determination of high and low surface areas

15: Catastrophic event