

# Iterative Design of Real-World Intelligent Systems

Panel Discussion  
2009 AAAI Spring Symposium

Aaron Spaulding  
SRI International



# Value of iterative interaction design

## Traditional Process

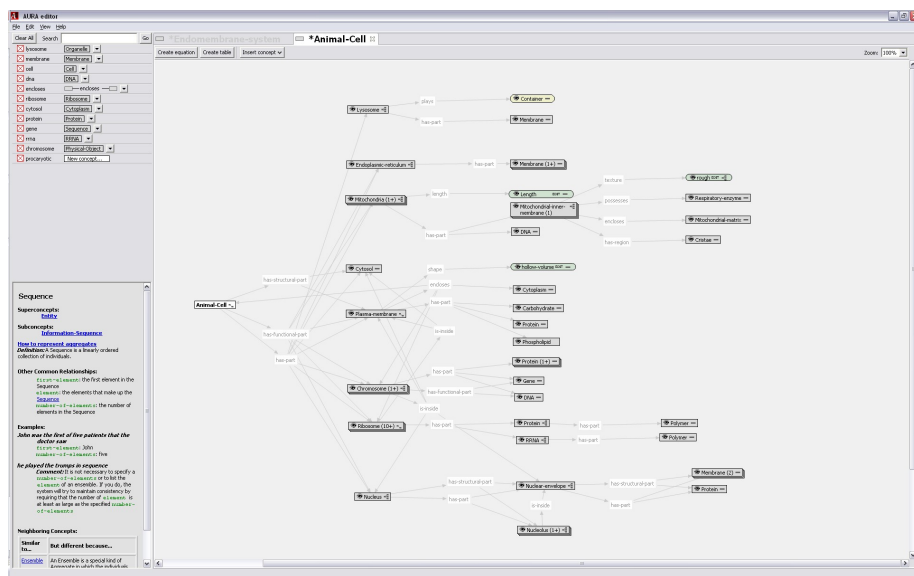
- Design
  - Prototype
  - User test
  - Analyze
  - Repeat
- 
- Goal is to find and correct usability problems
  - Assumes system will work in a consistent manner.

# Issues with intelligent systems

- Every part of the cycle is harder with intelligent systems
  - Cold start problem
  - Learning/Adaptive system problem (system adapting to user is hard to simulate)
  - Analysis can be difficult with reasoning systems

# AURA

A system to allow **domain experts** (say, chemists) to author a **knowledge base**, and query other knowledge bases to answer AP test type questions (continuation of RKF)



What are the reaction products if metallic copper is heated strongly with concentrated sulfuric acid?

# Evaluation Questions

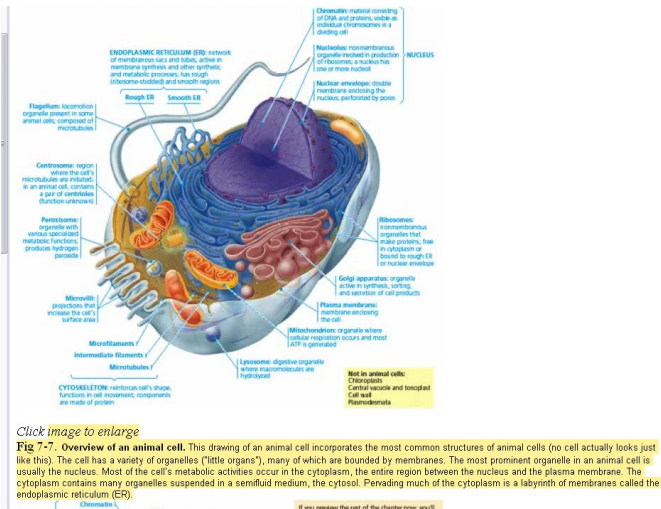
- To what extent does the system allow domain experts to formulate knowledge without assistance from knowledge engineers?
- To what extent does the system allow domain experts to query a scientific knowledge base?

# Prior Knowledge

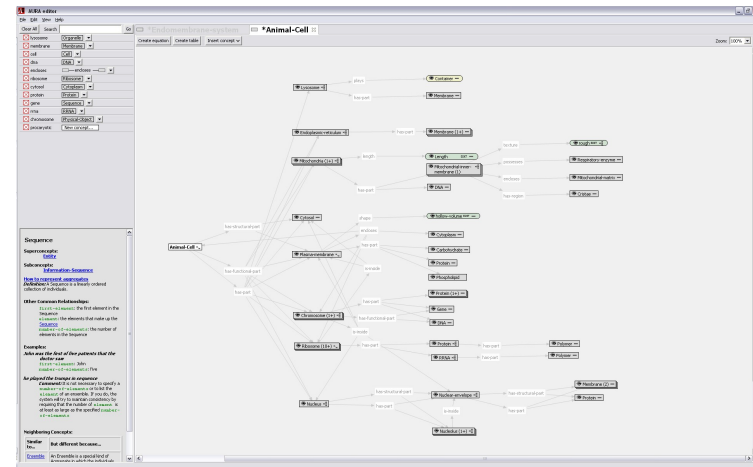
Prior to their exposure to the system the target users had no experience building knowledge bases capable of deductive reasoning.

# Prior Knowledge

Prior to their exposure to the system the target users had no experience building knowledge bases capable of deductive reasoning.



Domain representation



Aura representation

# Evaluation Challenges

- Building Knowledge Bases is a difficult task
  - Minimum training time of 20 hours for learning to use AURA to encode knowledge
  - 4 hours training for learning to ask questions
- Long evaluation time (100+ hours per participant)
  - Wanted to investigate participants ability to encode a significant amount of knowledge (approx. 50 pages of a college textbook)
  - Will they get up to expert level performance?
  - Knowledge base builds on what was previously entered.



# Evaluation Design

- Initial user tests to iron out high level usability issues
- Measure system effectiveness in best case: SRI team encoding knowledge with no time limit.
- Measure effectiveness when used by the target users (biologists etc.)
- Effectiveness defined by number of novel AP-test type questions that are answered.
- Overseen by BBN, performed at University of Colorado and BBN

# Evaluation Approach

- The evaluation employs a 2 x 2 design to test the effects of user experience on Knowledge Formulation and Question Formulation
- In each cell users will create a knowledge base for a section of an AP syllabus and other users will query the KBs to answer a set of AP questions in that domain

		Question Formulation	
		SRI Experts	Target Users
Knowledge Formulation	SRI Experts	Experts enter knowledge, and query it	Target users enter knowledge, experts query it
	Target Users	Experts enter knowledge, and target users query it	Target users enter knowledge, and query it

# Initial results

- Iterative user studies are great for capturing many surface usability problems; the longitudinal study found additional usability problems
- Some user created knowledge bases are nearly as complete and correct as the expert creates ones.
- Significant variation in quality of user created knowledge bases.