

“Outside in” design for Interdisciplinary HRI research

Selma Sabanovic (Stanford Univ.)

Eric Meisner (RPI), Linnda Caporael (RPI), Volkan Isler (Univ.
of Minnesota), Jeff Trinkle, (RPI)

From embodied action to embodied interaction



(Videos from Honda website: <http://www.hondanews.com/categories/1085/videos/>)

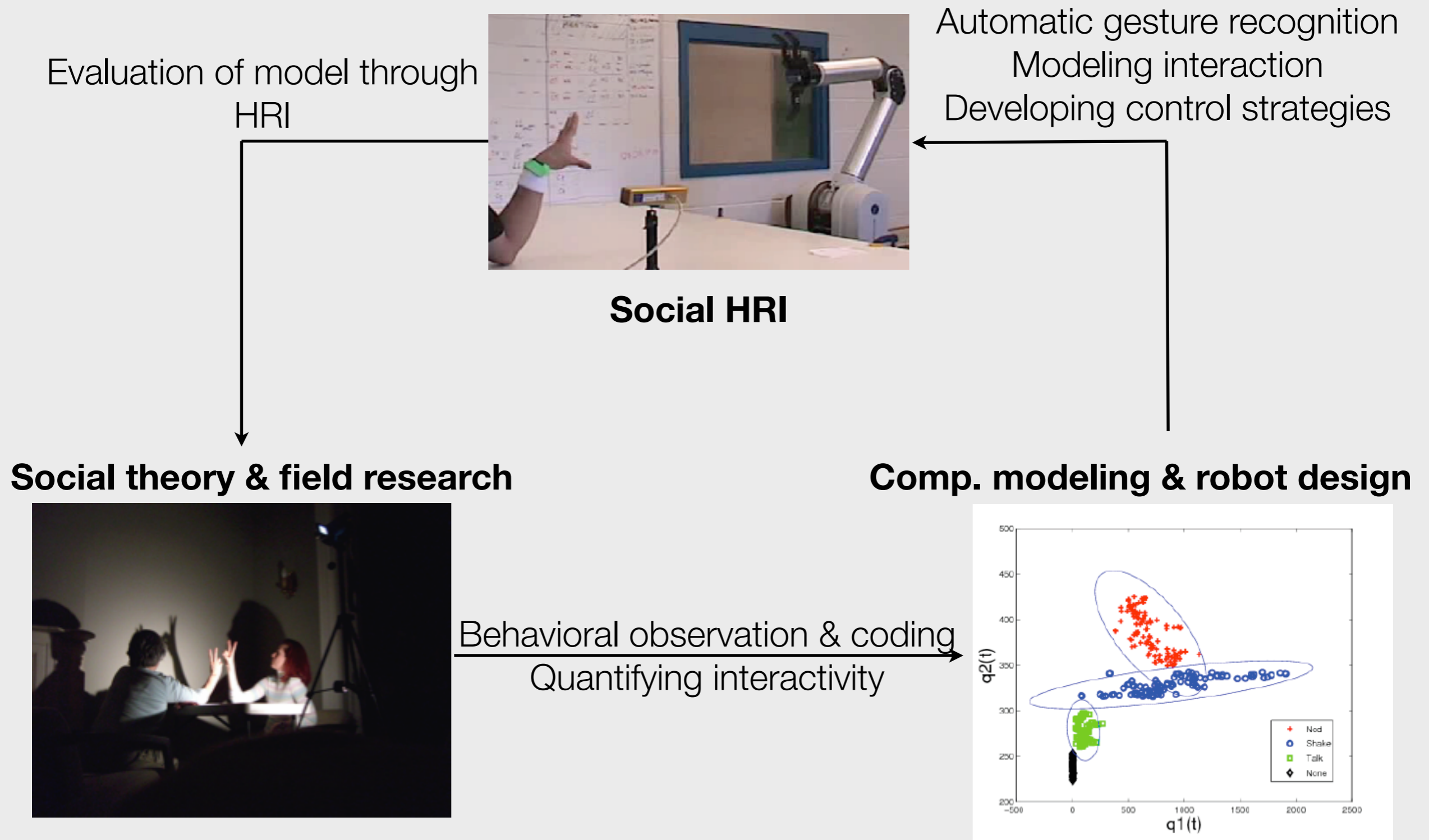
The interdisciplinary turn in robotics

- Scassellati 2000: theory of mind for robots
- Smith & Semin 2004: social robots as tool in psychology
- Ishiguro 2005: android science
- Barsalou, Breazeal, & Smith 2007: mathematical modeling of human behavior applied to robots

Barriers to interdisciplinary collaboration

- Language, practice, evidence, research focus
- Translating abstract social theory into specific control algorithms
- Creating a balance among the contributing disciplines: computer scientists are not just manual labor, social scientists are not just evaluators

Iterative process of “outside-in” design



1. Finding a common problem



Affective response
& control



Nonverbal interaction
& rhythmicity



Manipulation &
grasping research

Shadow puppets convey affect & sociality through rhythmicity and simple gestures

Affection

Aggressive

Conversation

Mirroring

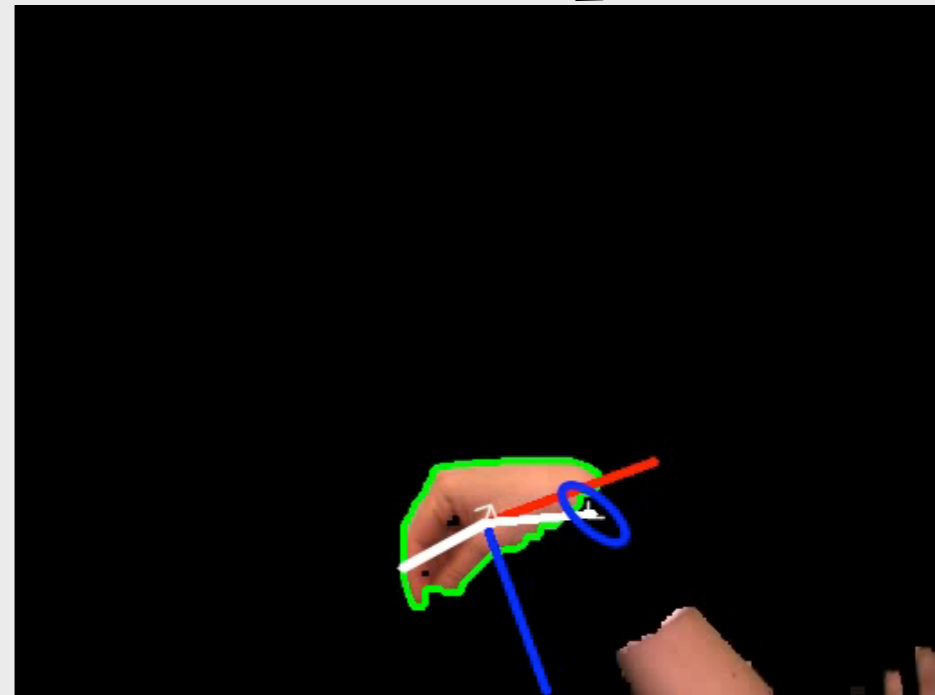
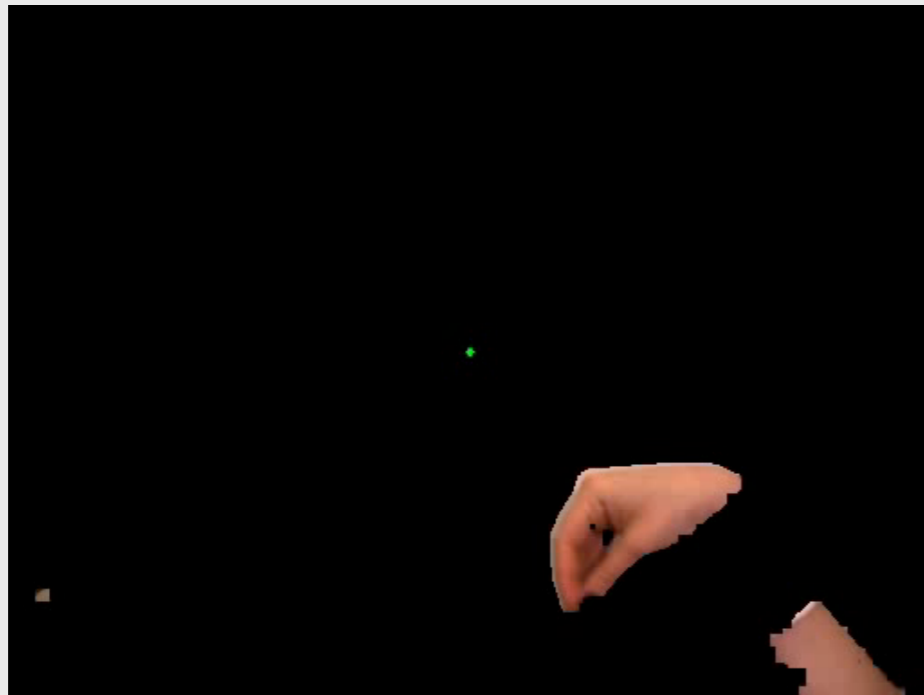
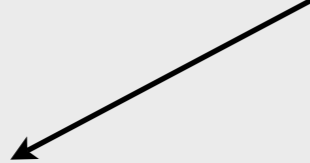
2. Defining components of interaction through real-world observation

Behavioral coding of interaction videos

- Subjects: left & right hand
- Orientation of body: Move towards, Move away, Stand
- Head position: Up, Down, Forward, Back
- Fingers: Open, Close, Open-close, Touch
- **Gestural primitives: Nod, Shake, Talk, Jerk, Flick, Touch, None**

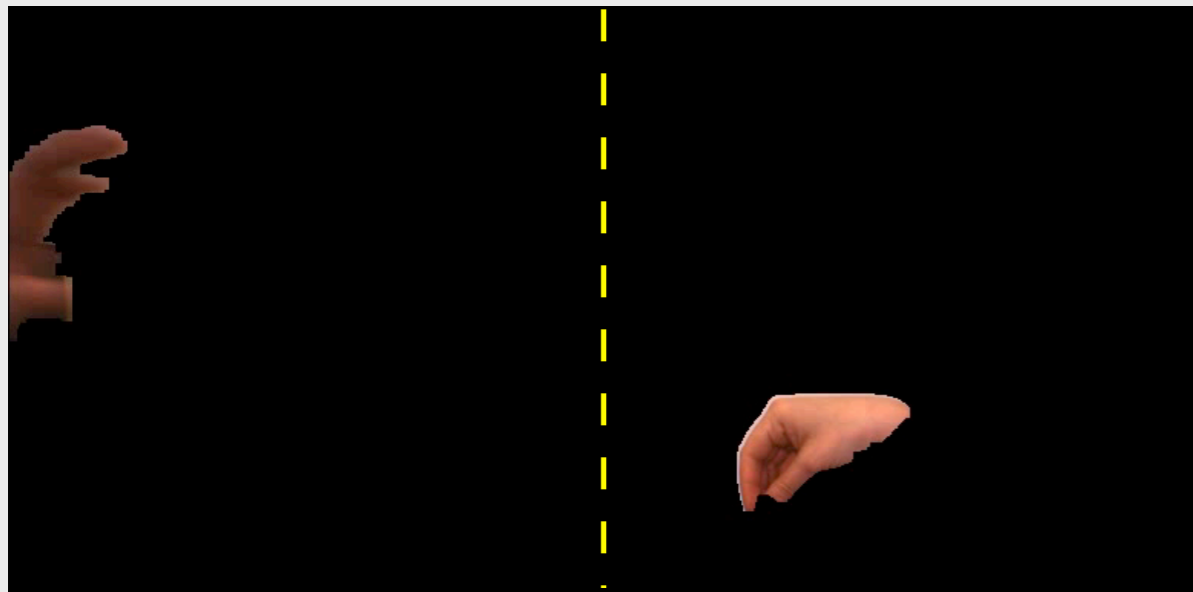


3. Recognizing gestural primitives automatically

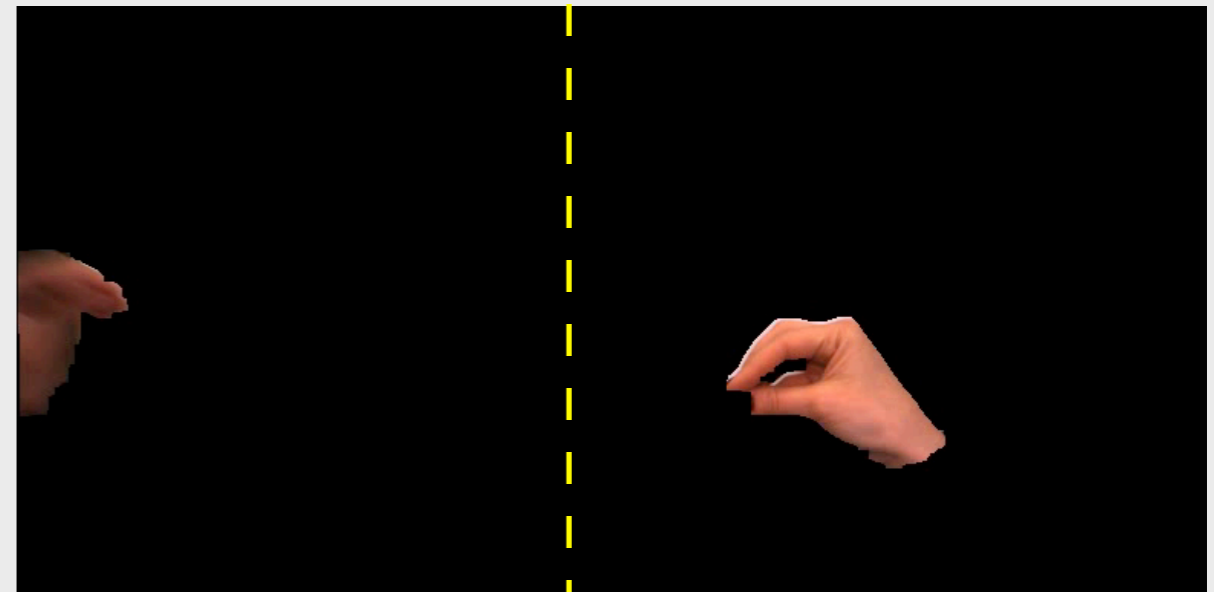


4. Quantifying interactivity through subjective evaluation

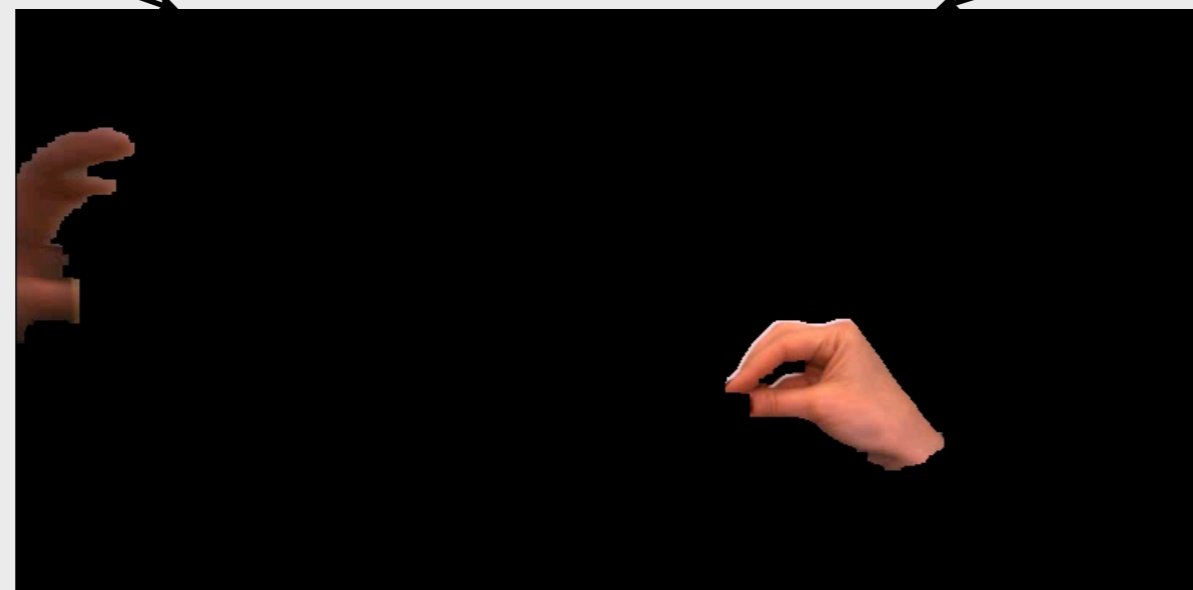
Creating real and false interaction videos



experimental data



experimental data



control data

Online evaluation of videos

- 12 real, 12 false samples
- Each subject watches 10 videos
- Of the 10, half are real and half are false
- Individual votes for each video (N=382, 284 correct & 98 incorrect) tracked & turned into interaction score

$$\text{Interaction Score} = \frac{\text{Positive Votes}}{\text{Total Votes}}$$

The screenshot shows the Rensselaer Institute website interface for an online evaluation. At the top, there is a navigation bar with links for "Introduction", "About the Project", "Vote", and "Contact Us". The Rensselaer logo and name are prominently displayed. Below the logo, it says "Video Number 20" and "Rating 1 out of 10". The main content area shows two hand gestures: a closed fist on the left and an open hand on the right, with a play button in the center. Below the gestures is a video player with a progress bar showing "00:05" and "00:00". Underneath the video player, there is a question: "Can the participants see each other?" with radio buttons for "No" and "Yes". A text input field contains "3EVH" and a "Verify and Submit" button is visible.

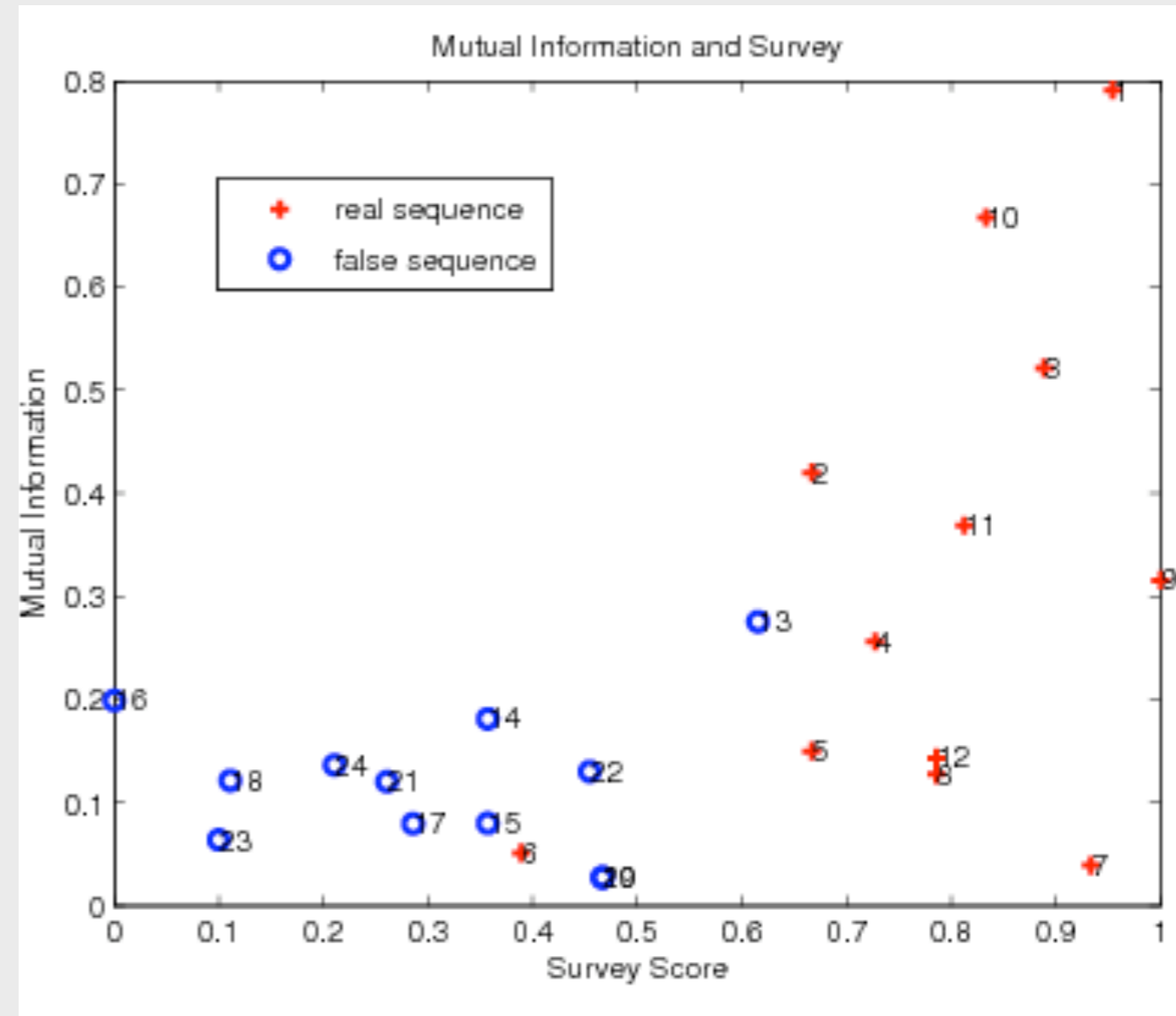
Videos at <http://www.cs.rpi.edu/~meisne/interaction>

5. Developing models and control strategies

Statistical correlates of subjective measures

Mutual information--measure of the gain in information from using the joint probability distribution we get from looking at the coupled behaviors of the two players.

Significant correlation with survey score (0.56)

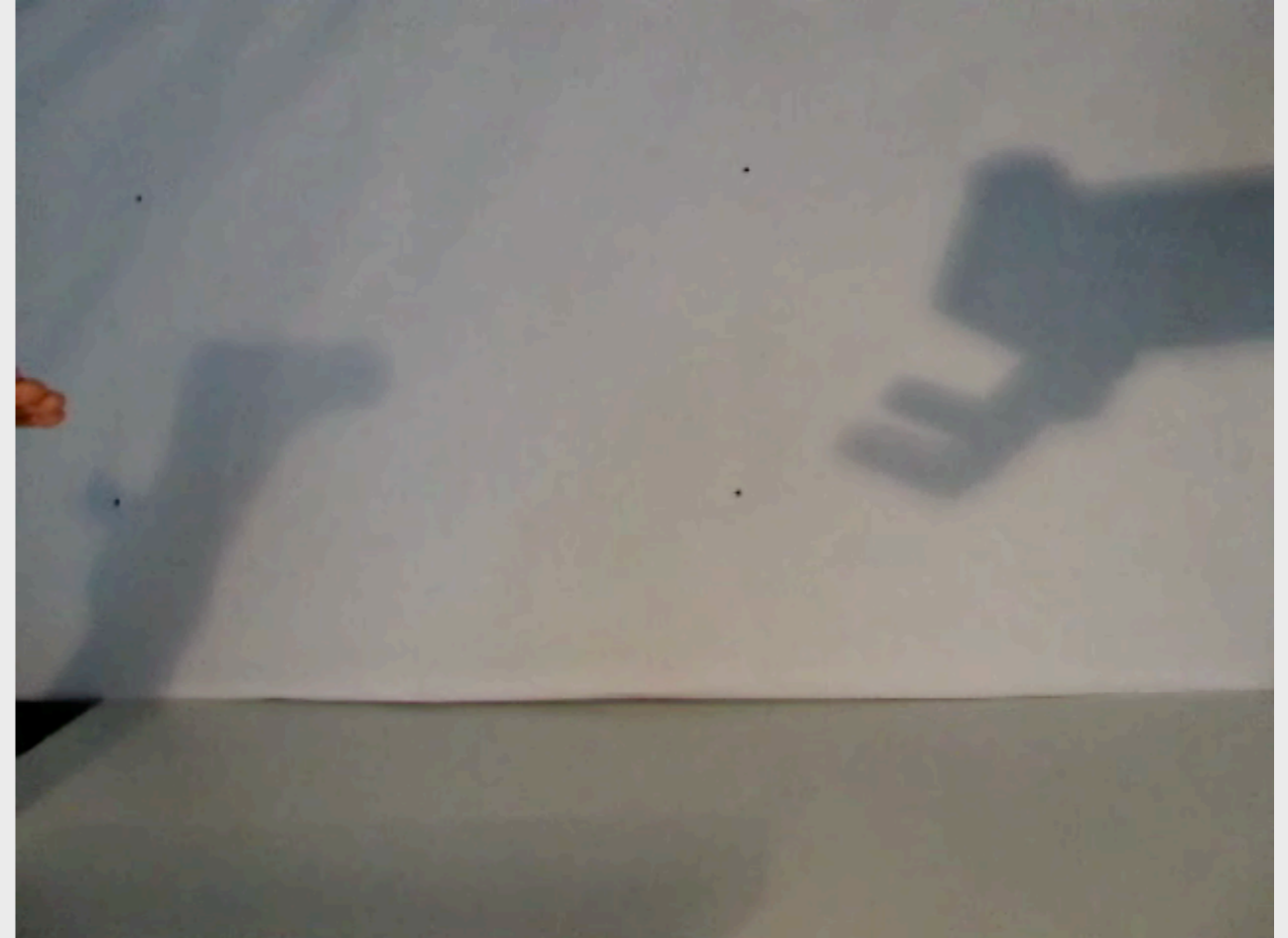


4 controllers, 4 models of interaction

- C1: high user rating, high mutual information
 - C2: low user rating, high mutual information
 - C3: Imitation
 - C4: first order Markov model
- Coupled interaction
 - Coupled, but with low subjective evaluation of interactivity
 - Mimicry as contingent response
 - Turn-taking based on interaction history

6. Validating models by applying them in HRI

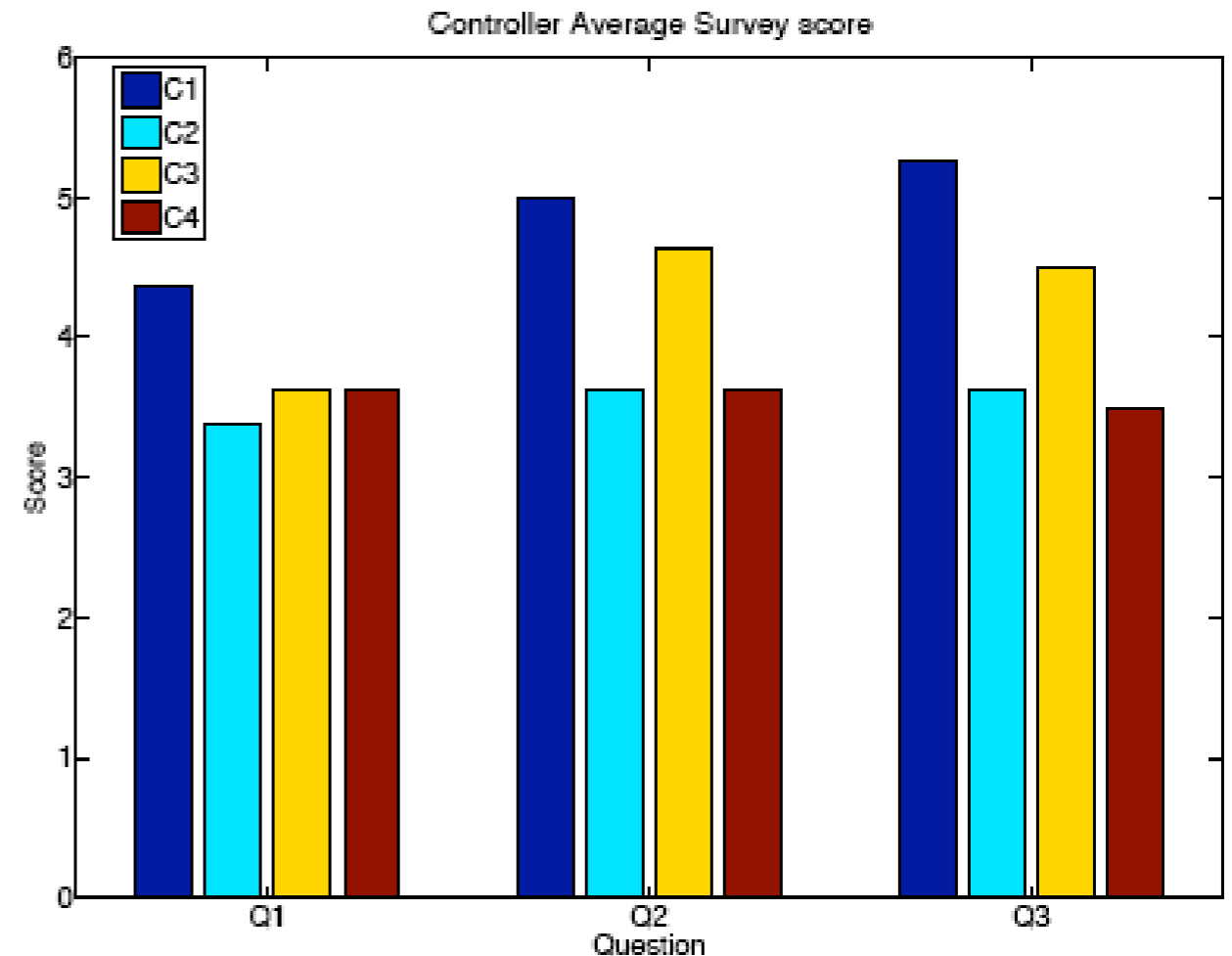
Robots apply gestural primitives & models



Participants evaluated the interactions:

8 participants rated 3 statements:

- The robot reacted appropriately to me
- The robot could recognize my actions
- The robot seemed intensely involved in the interaction



“Outside-in” design contributes to social and computer science

- Simple behaviors can evoke attribution of sociality, but they have to follow the fundamental rules of coupled interaction which humans perform unconsciously but recognize reliably
- Generative model is judged as more interactive, so there is a benefit to modeling the joint behavioral distribution. This also fits with social theories about entrainment and coupled behavior
- Instead of top-down modeling, start with observation of real-world coordination and build up interactional skills for robots
- Understand attribution of social characteristics and build robots that can “push people’s ‘Darwinian buttons’” (Turkle 2005)
- Publishing in both fields can be used as a measure of success for interdisciplinary HRI projects

Future directions

- Do online evaluation of HRI videos
- Modeling content as well as process
- Automatic coding of behavioral data
- Gathering and analyzing interaction data from first-person perspective
- Building and validating models through interaction

Quest
ions?