

Staying Alive Longer: Autonomous Robot Recharging Put to the Test

Milo C. Silverman¹, Boyoon Jung², Dan Nies² and Gaurav S. Sukhatme²

¹Raytheon Company, El Segundo, USA, milo@robotics.usc.edu

²University of Southern California, Los Angeles, USA, boyoon|dnies|gaurav@robotics.usc.edu

Abstract

Autonomous mobile robots are being developed for numerous applications where long-term capabilities would be beneficial. However, most mobile robots have on-board power supplies in the form of batteries that last for a finite amount of time, in which case the robot becomes reliant on human intervention for extended usage. To achieve true long-term autonomy, the robot must be self-sustaining in its environment. We have developed a control architecture and an accompanying recharging mechanism which allows a robot to readily intervene its regular operation with autonomous recharging to stay alive. We demonstrate the efficacy of our system experimentally, by requiring the robot to serve as a sentry, monitoring our lab entrance for an extended period of time. The system is able to operate for long periods of time without operator intervention.

1 Introduction

Autonomous mobile robots are being developed to perform numerous tasks from planetary exploration [1] and mine sweeping [2], to entertainment [3]. Each application requires the robot to survive in its environment, whether it be open or closed, indoors or outdoors. Operating time is limited for many of these robots due to their on-board power supplies. As a result, long-term autonomy is not possible. If this limitation could be overcome, then mobile robots could be used for new and more meaningful applications on a regular basis. In addition, new avenues of mobile robotics research could be explored. Currently, rechargeable batteries are typically used that provide power for only a few hours. Once depleted, the robot/batteries must be connected to a recharger via human intervention. This results in a non-continuous robot task cycle as shown in Figure 1 (a), thereby preventing long-term autonomy. To achieve true long-term autonomy, the robot must be self-sustaining in its environment. A continuous robot task cycle is then within reach as shown in Figure 1 (b), which can be defined simply as providing the robot with the means to recharge itself, and continue its allotted tasks without human assistance. In the system we present here, the Start Up and Shutdown phases are performed by the robot autonomously.

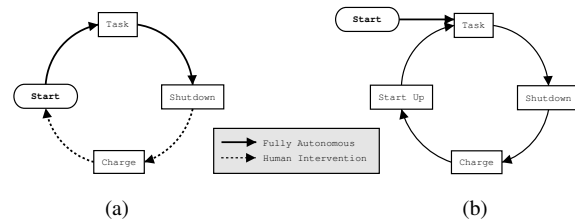


Figure 1: Robot task cycle comparison.

In [4], we developed and validated an autonomous robot recharging system (based on a compliant mechanical design for docking), which brings us closer to achieving long-term autonomy. In this paper, we focus on the utilization of the recharging system, further proving its robustness, repeatability, and reliability. We also highlight some design improvements including a power management system, which was implemented to achieve a faster and more efficient recharging cycle. As an illustration of long-term autonomy, we present results which show that, using our system, the robot is able to carry out a monitoring task for far longer than it would have been able to without recharging. The task, while simple, forces the robot to autonomously recharge when necessary to continue operation for an extended period of time, requiring several docking cycles.

2 Related Work

Arguably, the first autonomous mobile robots date back to [5]. As part of a simple, yet rich, behavior set, these robots exhibited autonomous recharging capabilities. Since then, there has been a relatively small body of work in robot recharging for long-term autonomy. Some of these approaches are discussed in [4], particularly those using a robot platform similar to ours. We focus here on comparing our approach to other investigations in long-term autonomy. Note that we are not interested in continuously operating manipulators which are always connected to an external power source, or in AGVs which are powered through a continuous inductive coupling with wires embedded in a factory floor. Our focus is on untethered, mobile systems, which must intervene their normal operational task(s) with autonomous recharging to stay alive.

In [6], the results of a week-long repetitive docking experiment are presented where their robot continually docks every 10 minutes in a laboratory environment. Of interest is an additional experiment where their robot will perform a task in one hour increments over the course of a week in an expanded environment. However, it is unclear how often the robot docks during the experiment. In [7], a recharging system is described coupled with a web-based teleoperation system to define tasks for a robot to complete. Their goal is to develop a system that can run for a year, 24 hours a day, 7 days a week. These two examples are most closely related to what we are trying to achieve with our recharging system in a laboratory environment.

A commercially available mobile robot for the home, sold under the name *Cye* [8], is supplied with a recharging station that it connects to autonomously when the batteries register low. If the recharging station cannot be found, the robot will stop at its current position and shutdown, at which time human intervention is required to manually dock the robot. This is a limitation of the system, but still an example of robot recharging being utilized mainstream.

Other long-term autonomy approaches include methods where the robot does not dock to recharge a power supply, but instead harnesses its power from some other means. One example includes solar power, such as was used on the Mars Pathfinder mission rover *Sojourner* [9] as it traversed the surface of Mars in 1997. Another example of interest is the *SlugBot* [10], which mimics nature by living off the land. The robot is designed to catch slugs and "digest" them for energy, a novel approach to long-term autonomy.

3 Electromechanical Design

We have designed a recharging system, explained in detail in [4] and shown in Figure 2, that is fitted to an *ActivMedia Pioneer 2DX* robot. The *Pioneer* robot is a three-wheeled platform equipped with an on-board processor, a laser rangefinder, and a PTZ (pan-tilt-zoom) color camera supporting autonomous control capabilities. In its typical configuration, the robot has three lead-acid rechargeable batteries on-board to supply power. The compatible recharging system we developed consists of two main components - a docking station and a robot docking mechanism. Safety, compliance, compactness, and robustness were each addressed in our design.

The docking station, as shown in Figure 3 (a), is a free-standing passive device with 2 DOF, providing the necessary compliance for multiple docking conditions. It is modular in design, and can be easily incorporated into any indoor environment our robot may be placed. A cone is used to direct the robot's docking mechanism toward the electrical contacts, while also providing a large docking window for the robot to enter. A contact switch is

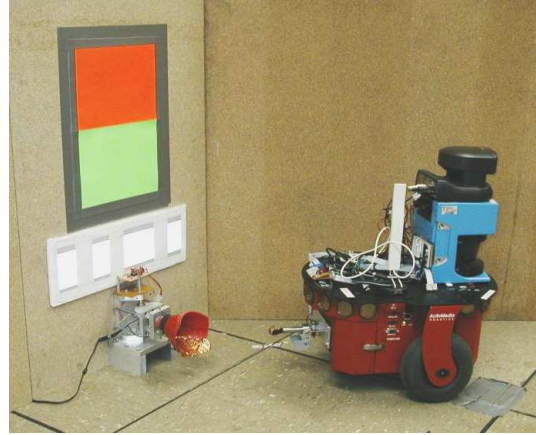


Figure 2: Recharging system complete setup.

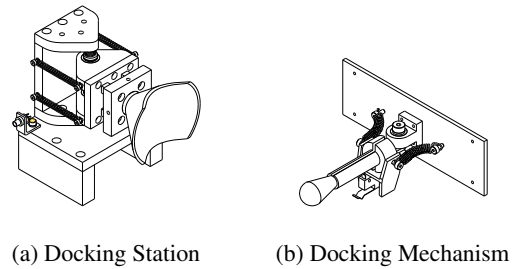


Figure 3: Docking station components.

located inside the cone, which controls the power connection to the robot. An IR-LED is located on the top of the docking station to provide an input as to whether or not a dock was successful. Power is supplied to the docking station via a plug-in charger that is normally used to directly recharge the *Pioneer* robot.

The robot docking mechanism, as shown in Figure 3 (b), is a passive 1 DOF assembly attached to the back of our robot. A contact switch is connected to the underside of the docking mechanism, controlling the power connection to the robot's batteries. An IR-LED detector is mounted to the top deck of our robot directed toward the back, where the docking station (and IR-LED) is located during the docking procedure.

A recent addition to our recharging setup is a robot power management system. This includes a microcontroller that has been integrated between the robot's main power switch and the batteries as shown in Figure 4. We selected an 8-bit, 50 MIPS *Scenix* chip as our power management microcontroller. It provides 24kB of flash memory, and an easy to implement timing capability. The *Scenix* chip was chosen due to its low cost, ease of implementation, and capabilities compared to similar microcontrollers.

Our robot does not have the capability to be put in a sleep mode (hardware limitation), which prevents the robot from fully recharging when powered on. The internal computer and associated electrical devices mounted

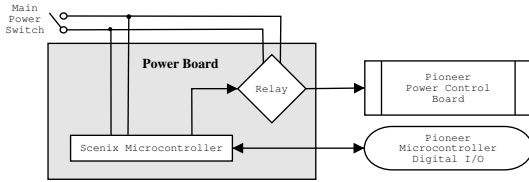


Figure 4: Power management schematic.

to the robot (i.e. sensors) draw a significant amount of power, which only allows a recharge to approximately 50% of its maximum. The circuitry we have added shuts down all systems upon identification of a successful dock. This results in a faster and more efficient recharging cycle time, and allows for a full recharge.

4 Control Architecture

As shown in Figure 5, the power management program consists of four parts: a main controller and three managers. The main controller continuously runs as long as the robot is powered on, while the three managers are thread-based servers that act like communication channels between the main controller and other software components (i.e. the task modules and the docking module). The algorithm for the main controller is straightforward; it monitors the robot's voltage level continuously, and if the voltage level is too low (under a threshold), it starts a *shutdown process* as follows:

1. wait for a 'READY' signal from the task manager, meaning that all task modules have been terminated safely.
2. launch a docking module
3. wait for a 'DOCKED' signal from the docking manager
4. send a 'SHUTDOWN' signal to the Scenix chip
5. shut down the robot's on-board computer

After a predefined amount of time, the power board wakes up the robot, and the main controller is launched automatically. The main controller then starts an *initialization process* as follows:

1. if the voltage level is still low, start the *shutdown process*
2. if recharge is complete, launch the three managers
3. if there are saved task modules, restart them

By adopting this client-server model, the task modules can be isolated from the docking system. In addition, the docking module can be replaced by others based on user requirements.

4.1 Task Manager

The task manager is a communication channel between the power management program and task modules. The main role of the manager is to inform all task modules of a power emergency event, and to terminate the task

modules safely. The manager is also in charge of saving the current status of each task module so they can resume their last task prior to the robot's recharging. In order to utilize the power management system, all task modules register themselves to the task manager when they are launched for the first time.

Door-Monitoring Task Module. The current system has a single task module, '*Door Monitoring*'. This module implements a simple security task wherein the robot monitors the entrance to our laboratory, which is a set of double doors. The task acts as a driver for the recharging system under study here, by depleting the robot of energy over time, thus forcing recharging. The robot wanders while avoiding obstacles until the main doors of the lab are detected, at which time it stops and begins monitoring them. Whenever someone opens a door, the robot takes a picture every second the door is detected open using the robot's PTZ camera. All activities during the process are logged for future analysis. This task is a prototype example of a security system using mobile robots, which requires long-term autonomy.

Our task module is implemented using a behavior-based approach [12], with its control architecture shown in Figure 5. There are three behaviors in the task module: *ImageCapture*, *DoorWatch*, and *SafeNavigation*. *SafeNavigation* is for wandering without collision, and is implemented using a potential field technique following [11]. There are two forces defined - internal and repulsive. The internal force of the robot is a constant vector toward the front, which makes the robot move forward most of the time. The repulsive force keeps the robot away from all objects including walls, furniture, humans, etc. The repulsive force is computed based on laser rangefinder readings.

DoorWatch is in charge of positioning the robot at the proper distance from the doors. When the robot detects the doors, the *DoorWatch* behavior suppresses the *SafeNavigation* behavior, and causes the robot to approach the doors at an appropriate angle for monitoring. Eventually, the robot positions itself at the desired distance for monitoring the doors (empirically set to 2 m in our system).

ImageCapture continuously checks for a change in a door's status (i.e. opened), and begins taking pictures using the robot's camera until the door is closed again. We placed a laser beacon [13] on each door, using the robot's laser rangefinder for detection. The laser rangefinder returns the orientation of detected laser beacons; therefore, the robot infers that a door has been opened when the difference between the two door orientations exceeds a threshold.

4.2 GUI Manager

The GUI manager provides an interface to users. The user can investigate the internal status of the robot (i.e.

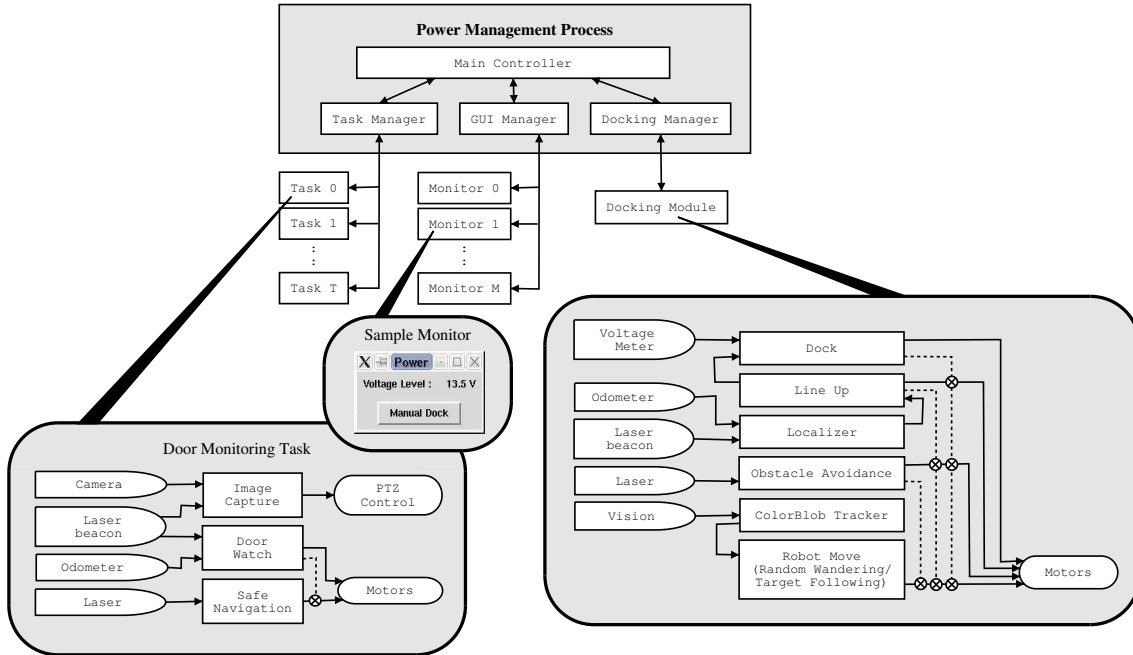


Figure 5: Power management program with expanded manager behaviors.

sensory readings, voltage level, etc.) by creating a Monitor Module (i.e. graphical interface). For our system, one Monitor Module was created to view the robot’s voltage level. This user interface program also contains a button to send a ‘MANUAL-DOCK’ command, which directs the robot to dock even when the voltage level is not low enough to cause an autonomous dock. This allows us to test the system without waiting for a full discharge of the robot’s batteries.

4.3 Docking Manager

When the docking manager receives a ‘DOCKED’ signal from the docking module, it informs the main controller that the robot has docked successfully. In our previous work [4], the docking module was integrated with a voltage checking module, which controlled the entire docking process. By modifying the original architecture into the layered server-client model as shown in Figure 5, the docking system is modularized and can be replaced by another docking module (if required) without any change to the power management system.

Docking Module. The docking module has the same control architecture as the docking module described in [4]. If the docking module is launched, the robot starts to search for the docking station. The *RobotMove* and *ColorBlobTracker* behaviors start the robot’s approach to the docking station using the vision system. We have updated our vision scheme to include a second color patch above the docking station for more accurate detection (see Figure 2). We found that our single color patch could be incorrectly detected due to objects in our environment with a similar color. Once a robot is close enough to de-

tect the laser beacon located above the docking station, the *LineUp* and *Dock* behaviors take over the control and perform the docking process.

4.4 Player/Stage

For low-level robot control, the *Player/Stage* [14] software platform was used. *Player* is a server and protocol that connects robots, sensors and control programs across the network. *Stage* simulates a population of Player devices, allowing off-line development of control algorithms. *Player* and *Stage* were developed jointly at the USC Robotics Research Labs and HRL Labs and are freely available under the GNU Public License from <http://playerstage.sourceforge.net>.

5 Experimental Results

Using the power management program described in the previous section, we put our Pioneer robot through a series of tests to determine if our system was robust. In particular, we wanted to see if the robot could survive without human intervention over an extended period of time. Upon initial start-up, the Door-Monitoring Task Module was launched, which provided the task to keep the robot busy as its batteries were depleted. If no one entered the lab for an extended period of time, the robot would sit and wait - not very exciting for our tests. Therefore, we intervened by either opening the door from inside the lab or standing in front of the robot; both cases caused the robot to respond. Obstructing the robot’s view caused the robot to move and search for the laser beacons on both doors. When the laser beacons were found, the robot would stop and watch the doors again. Once the robot’s battery volt-

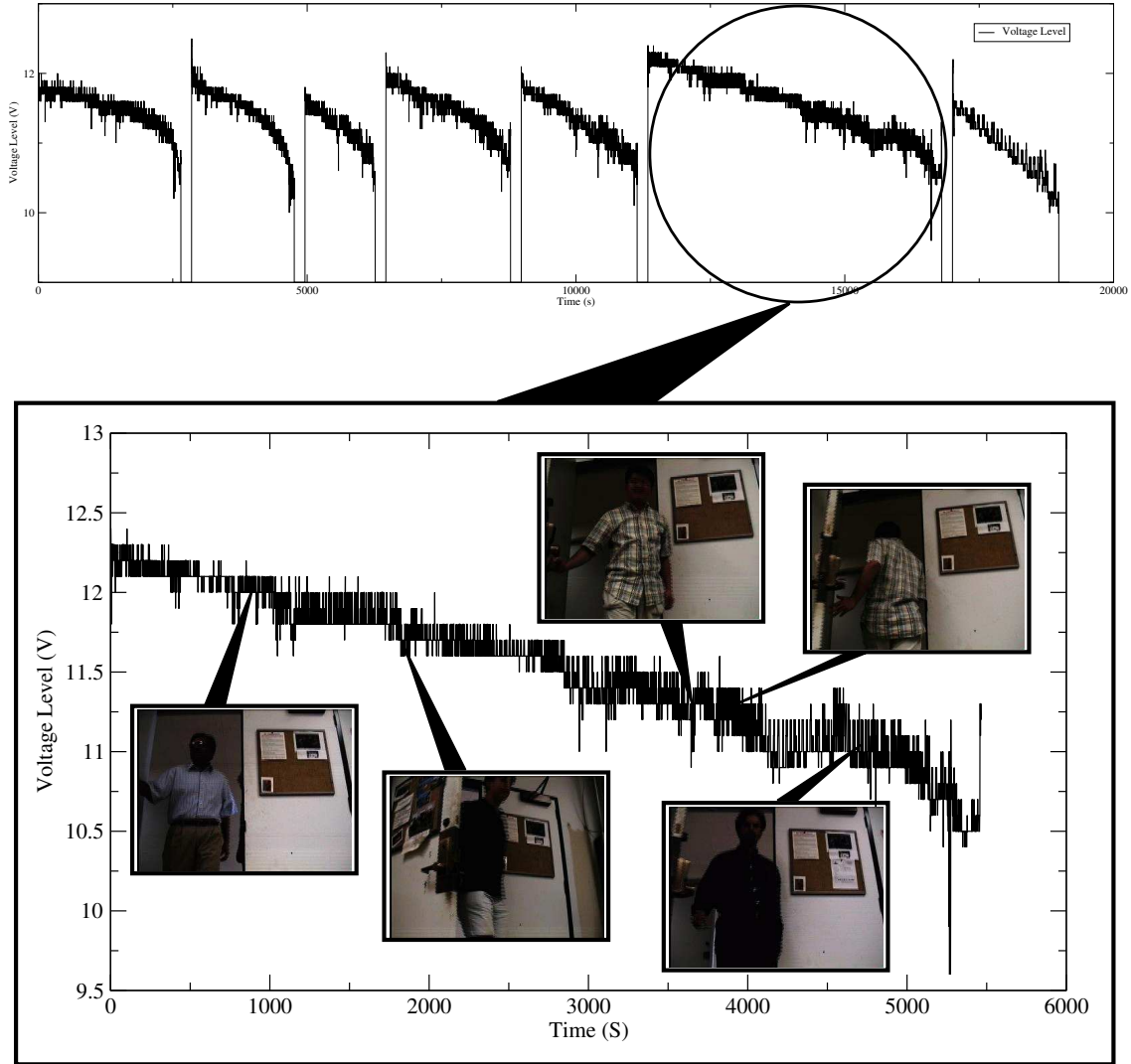


Figure 6: Voltage Level vs. Time for several task cycles (upper figure), the recharge cycle time is truncated; Voltage Level vs. Time for one task cycle enlarged with pictures inlaid representing the Door-Monitoring Task (lower figure).

age level reached our preset lower limit of 10.5 V, monitored within the main controller of our power management program, the robot began its Docking Module sequence - looking for the docking station. In our lab environment, the docking station was placed on the opposite end of the room from the doors. We did not want to make it impossible for the robot to find the docking station in our initial set of long-term autonomy experiments.

The experiment was repeated over a period of time as shown in the Voltage Level vs. Time plot in Figure 6, where we show seven robot dock and recharge cycles. The recharge cycle time shown has been truncated, which explains why each cycle is so close to its preceding cycle. The robot was allowed to recharge for 1 hour only (1 complete shutdown cycle in our system). In further experimentation, we will allow the robot to fully recharge using as many 1 hour cycles as necessary. It can be seen

that the robot's battery level typically reached 12 V after 1 hour of recharging, where the maximum possible is approximately 14 V. We presume that two to three total recharging cycles may be necessary for a full recharge if using 10.5 V as a lower limit. This lower limit was chosen to provide ample time for multiple docking attempts, if necessary, to prevent the battery level from reaching 10 V, the recommended lower limit for safe operation of the lead-acid batteries.

The lower Voltage Level vs. Time plot shown in Figure 6 is one of our seven task cycles enlarged, as pointed out from the upper plot. This represents how our task is connected to our system over time. We show a series of pictures that were taken by the robot's camera of people either entering or leaving the lab during the course of one task cycle, which lasted for approximately 1.5 hours. Each task cycle shown in the upper plot of Figure 6 is

Table 1: Time results for each test cycle and accumulated experiment time.

Test Cycles	1	2	3	4	5	6	7
Door Monitoring	00:42:17	00:29:52	00:20:20	00:37:53	00:33:26	01:27:28	00:23:17
Docking	00:01:53	00:01:58	00:01:24	00:00:44	00:02:29	00:00:47	00:01:01
Accumulated Time	01:44:10	03:16:00	04:37:44	06:26:21	07:52:16	10:20:31	11:44:49

essentially similar to each other, with varying task cycle lengths due to the robot's activity during that particular cycle. The batteries will of course run down faster if the robot is moving around more often.

Table 1 shows the time results for each of our 7 test cycles in the units of hours:minutes:seconds. In particular, individual times for the Door Monitoring task, Docking sequence, and accumulated time have been displayed for each test run. The Door Monitoring task time is measured from the point at which the task module is started until the robot begins the Docking sequence. The Docking sequence time is the total time required for the robot to successfully dock. These times vary across cycles due to the robot's orientation and location with respect to the docking station at the time the Docking Module is initiated. In addition, if there is an obstacle blocking the docking station, the robot will not register the docking station's location and continue wandering until found, thereby increasing the Docking sequence time considerably. Our results show an average Docking sequence time of approximately 1 minute and 28 seconds. The accumulated time includes the recharge cycle time of 1 hour for each test cycle. From the table, it can be seen that our total experimentation time was approximately 12 hours.

In Figure 7, we show the odometry results of several task cycles merged into a single density plot. It is clearly apparent where the robot loiters for extended periods of time during our experiments. The robot should be typically watching the door from a predefined distance of 2 m for the duration of its task cycle. There should be very little activity near the docking station except during a docking sequence. Figure 7 represents this with a densely populated area appearing 2 m from the door and only a few spots near the docking station. This shows us that the robot is successfully completing its task, sustaining itself on a long-term basis by recharging when necessary, and returning to its task once recharged.

6 Conclusions

Using the recharging system developed in [4], with the additional hardware and updated control architecture described in this paper, enabled a robot to complete a defined task (monitoring the lab entrance) and switch to a docking sequence when necessary to extend its useful operating time without human intervention. We completed several test runs that illustrate the robustness of our system. In addition, through our enhancements to the sys-

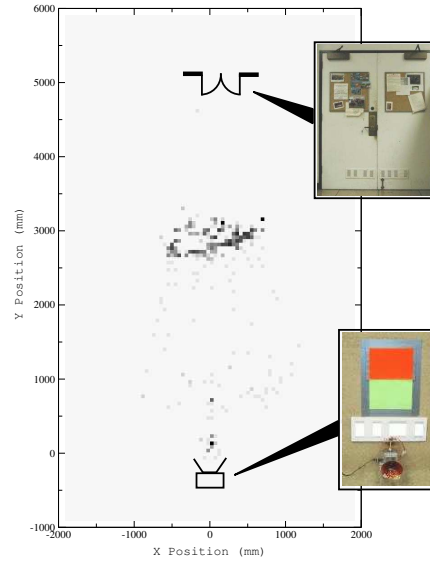


Figure 7: Density plot of robot activity for each task cycle.

tem, we have improved reliability, and have shown that our system is repeatable in a real-world test. The enhancements were implemented to make our Pioneer robot more suitable for long-term autonomous task capabilities. Our system was developed to be modular, with the idea that it can be applied to other platforms for different environmental applications.

Further long-term testing will be performed to continue proving out the reliability, repeatability, and robustness of our system. Other tasks will be incorporated to achieve even more interesting results. Another avenue for future research is to investigate multiple robots cooperating on a task sharing a common docking site.

Acknowledgments

The authors thank David Naffin for his assistance with the power management circuitry design. This research was supported in part by the DARPA MARS program (grant DABT63-99-1-0015), the ONR DURIP program (grant N00014-00-1-0638) and NSF (grant ANI-0082498). The first author was supported by a fellowship from Raytheon Electronic Systems, Raytheon Company.

References

- [1] Robotic Vehicles Group, Jet Propulsion Laboratory, <http://robotics.jpl.nasa.gov/groups/rv/>

- [2] The Shadow Deminer, Shadow Robot Company Ltd., <http://www.shadow.org.uk/projects/deminers.shtml>
- [3] Entertainment Robot Aibo, Sony Corporation, http://www.aibo.com/ers_210/
- [4] M. C. Silverman, D. Nies, B. Jung and G. S. Sukhatme, "Staying Alive: A Docking Station for Autonomous Robot Recharging," in *Proc. IEEE International Conference on Robotics and Automation (ICRA)*, Washington DC, 2002.
- [5] W. G. Walter, "The Living Brain", W.W. Norton, New York, 1963.
- [6] Y. Hada and S. Yuta, "A first-stage experiment of long term activity of autonomous mobile robot - result of repetitive base-docking over a week," in *Proc. Seventh International Symposium on Experimental Robotics (ISER '00)*, December 2000.
- [7] D. Austin, L. Fletcher and A. Zelinsky, "Mobile Robotics in the Long Term - Exploring the Fourth Dimension," in *Proc. IEEE/RSJ International Conference on Intelligent Robots and Systems*, Wailea, Hawaii, October 2001, pp. 613–618.
- [8] Probotics, Inc., <http://www.personalrobots.com/spycye/index.html>
- [9] Mars Microrover Power Subsystem, <http://mars.jpl.nasa.gov/MPF/roverpwr/power.html>
- [10] I. Kelly, O. Holland and C. Melhuish, "SlugBot: A Robotic Predator in the Natural World," In *Proc. 5th International Symposium on Artificial Life and Robotics*, Oita, Japan, January 2000, pp. 470–475.
- [11] R. C. Arkin, "Motor schema based mobile robot navigation," *International Journal of Robotics Research*, Volume 8, Number 4, pp. 92–112, 1989.
- [12] M. J. Matarić, "Behavior-Based Control: Examples from Navigation, Learning, and Group Behavior," *Journal of Experimental and Theoretical Artificial Intelligence*, special issue on Software Architectures for Physical Agents, Volume 9, Number 2-3, pp. 67–83, 1997.
- [13] A. Howard, M. J. Matarić and G. S. Sukhatme, "Relaxation on a Mesh: a Formalism for Generalized Localization," in *Proc. IEEE/RSJ International Conference on Intelligent Robots and Systems (IROS)*, Wailea, Hawaii, October 29 - November 3, 2001, pp. 1055–1060.
- [14] B. P. Gerkey, R. T. Vaughan, K. Stoy, A. Howard, G. S. Sukhatme, and M. J. Matarić. "Most Valuable Player: A Robot Device Server for Distributed Control," in *Proc. IEEE/RSJ International Conference on Intelligent Robots and Systems (IROS)*, Wailea, Hawaii, October 29 - November 3, 2001, pp. 1226–1231.