

---

# Representations of Proxemic Behavior for Human-Machine Interaction

## **Ross Mead**

Interaction Lab  
Computer Science Department  
University of Southern California  
3710 McClintock Avenue  
Los Angeles, CA 90089 USA  
rossmead@usc.edu

## **Amin Atrash**

Interaction Lab  
Computer Science Department  
University of Southern California  
3710 McClintock Avenue  
Los Angeles, CA 90089 USA  
atrash@usc.edu

## **Maja J Matarić**

Interaction Lab  
Computer Science Department  
University of Southern California  
3710 McClintock Avenue  
Los Angeles, CA 90089 USA  
mataric@usc.edu

---

Copyright is held by the author/owner(s).

## **Abstract**

We discuss representations of human spatial behavior (proxemics) in social encounters; specifically, we consider *physical* (distance and orientation), *psychological* (interagent relationship), and *psychophysical* (sensory experience) representations. We conducted a pilot study with two interacting participants and a physical obstruction initially limiting their perception of social stimuli. We compare two of three proxemics representations by training Hidden Markov Models on the collected data to recognize human transitions into (initiation) and out of (termination) the social interaction. Our findings demonstrate an improvement in recognition using the psychophysical proxemics representation over the more commonly used physical representation.

## **Author Keywords**

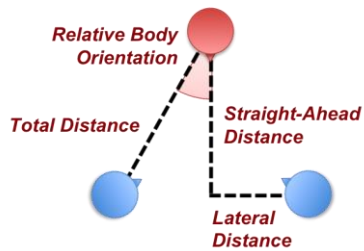
Proxemics; spatial interaction; social spacing; human-machine interaction; human-robot interaction; Hidden Markov Model; PrimeSensor; Kinect; psychophysical.

## **ACM Classification Keywords**

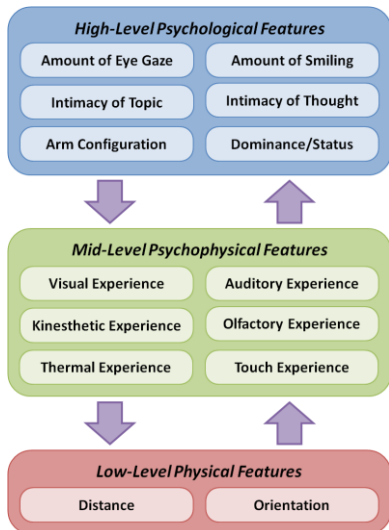
H.1.2 [**Models and Principles**]: User/Machine Systems – *human information processing*.

## **General Terms**

Design, Experimentation, Human Factors, Theory.



**Figure 1.** The *physical* proxemic representation, such as in [17], is the most common in the analysis of proxemic behavior.



**Figure 2.** *Psychological* factors dictate the desired *psychophysical* (or sensory) experience, which is manifested *physically* through the manipulation of space via change in position and orientation.

## Introduction

Proxemics is the study of the interpretation, manipulation, and dynamics of human spatial behavior in co-present social encounters [7]. This process is governed by sociocultural norms, which, in effect, determine the overall sensory experience of each interacting participant [7]. People use proxemic signals, such as distance, stance, hip and shoulder orientation, head pose, and eye gaze, to communicate an interest in initiating, accepting, maintaining, terminating, or avoiding social interactions [21, 4]. These cues are often subtle and noisy and, subsequently, are subject to coarse analysis in both space and time [19]. Recent developments in markerless motion capture (such as the Microsoft Kinect and the PrimeSensor) provide the means and justification to more accurately model the subtle dynamics of proxemic behavior. Such models can be used for both recognition and control in human-computer and human-robot interaction [15].

There exists a rich body of work in the social sciences that seeks to explain proxemic phenomena. Some of these proxemic models have been investigated in human-machine interaction scenarios. In this paper, we group these approaches into three categories of representation: *physical*, *psychological*, and *psychophysical*. Physical and psychological representations have received the most attention in both human-human and human-machine interactions; however, these representations often struggle to model the complex dynamics between interacting agents and environmental interference (e.g., loud noise or visual occlusions). We propose the use of a psychophysical representation of proxemic behavior for modeling the situatedness of the agents within the environment, and to serve as a bridge between the two representations.

## Representations of Proxemic Behavior

*Physical representations* are concerned with how space is occupied by two or more bodies [12], relating these bodies via low-level spatial parameters of distance and orientation [17, 21] (Figure 1). These representations are the most common in the analysis of proxemics in both human-human and human-machine interactions. Virtual humans have been shown to manipulate the position of people in immersive virtual environments [10]. Rule-based spatial interaction controllers have also been applied to human-robot interaction (HRI) [12, 23, 9]. Marquardt & Greenberg [14] expand upon physical proxemic representation for ubiquitous computing by adding movement, identity, and location.

*Psychological representations* are concerned with the high-level interpersonal relationship between two or more agents. For example, Affiliative Conflict Theory [1] proposes that interagent spacing is governed by an equilibrium of intimacy, consisting of the amount of mutual eye gaze and smiling, the intimacy of topic or thought, and posture and arm configurations. Interpersonal Adaptation Theory [3] extends this by considering more dynamic behaviors—such as the amount of convergence, divergence, mirroring, compensation, and reciprocity—between social partners. These models have been investigated in immersive virtual environments [2] and HRI [18, 22].

There is little work bridging the gap between the above two representations. The psychological relationship between two agents dictates the desired sensory experience between them, manifested physically through change in pose (Figure 2). This dynamic can be expressed using a psychophysical representation, situating the agents in the environment.

### Hall's Proxemic Distances [7]

These distances correspond to particular interaction contexts and sensory sensations [7, 6].

#### Public Distance

- **Close:** 12-15 ft. (3.7-7.6 m)
- **Far:** 25 ft. (7.6 m) or more
- **Interaction:** public speaking
- **Sensations:** auditory, visual

#### Social Distance

- **Close:** 4-7 ft. (1.2-2.1 m)
- **Far:** 7-12 ft. (2.1-3.7 m)
- **Interaction:** among acquaintances
- **Sensations:** auditory, visual

#### Personal Distance

- **Close:** 1.5-2.5 ft. (46-76 cm)
- **Far:** 2.5-4 ft. (76-120 cm)
- **Interaction:** among good friends and family members
- **Sensations:** somatosensory, olfactory, auditory, visual

#### Intimate Distance

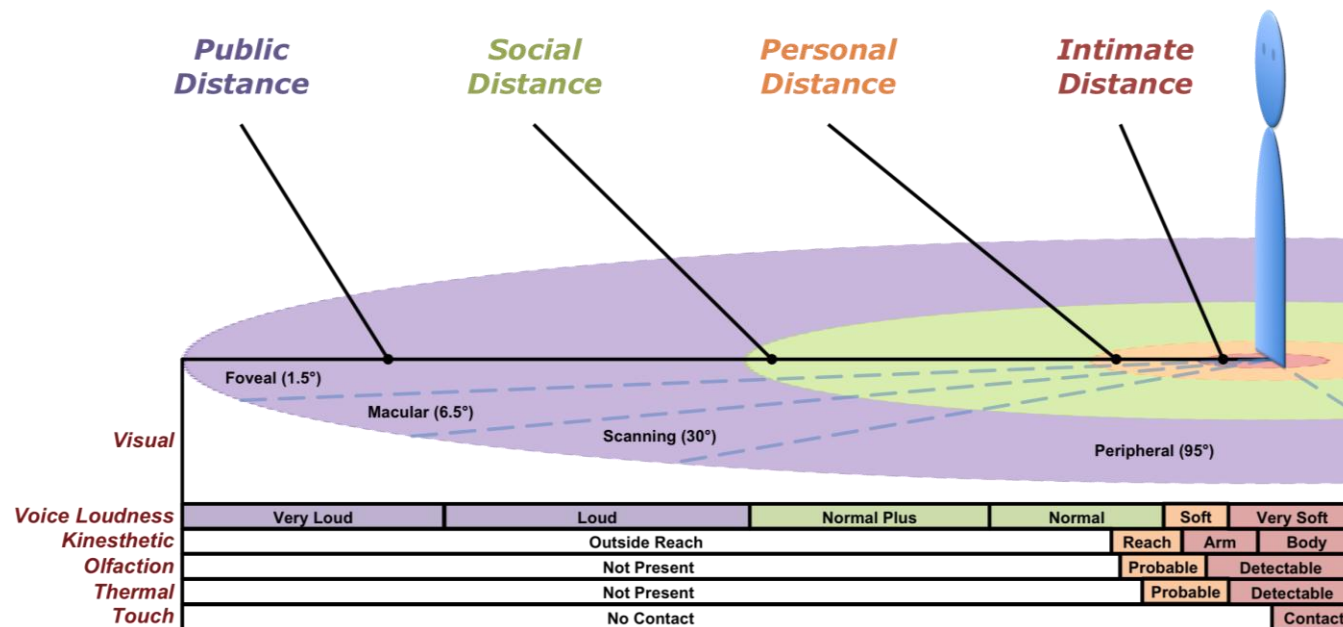
- **Close:** less than 6 in. (15 cm)
- **Far:** 6-18 in. (15-46 cm)
- **Interaction:** embracing, touching, or whispering
- **Sensations:** somatosensory, olfactory, auditory, visual

**Note:** these pertain to Western American and English culture—they are not cross-cultural [7].

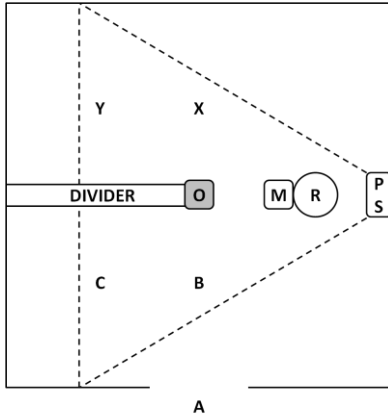
*Psychophysical representations* are concerned with the perception and production of social stimuli by two or more interacting agents. Edward T. Hall [5] coined the term "proxemics", and proposed culture-defined zones of intimate, personal, social, and public space (a *psychological* representation) [7]; however, Hall [7, 6] posited that these zones are characterized by psychophysical factors, such as the visual, auditory (voice loudness), olfactory, thermal, and somatosensory (touch and kinesthetic) experiences of each interacting participant (Figure 3). The effect of sensory experience on proxemic behavior is evident in the analysis of the personal space requirements of people with visual [8] and hearing [13] impairments.

Psychophysical representations relate sensory experience of social stimuli (such as speech and gesture) to spatial parameters (such as distance and orientation); however, these representations have yet to be thoroughly examined and formalized in human-machine interactions.

In previous work, we presented a method for both physical and psychophysical feature extraction inspired by literature [15]. We now use this feature extraction approach to compare the performance of physical and psychophysical representations in the automated recognition of human spatial dynamics for interaction. Psychological representation is saved as future work.



**Figure 3.** The relationship between Hall's [7] proxemic distances and the sensory experiences a person could expect at each [7, 6].



**Figure 4.** The interaction setup (see **Key** below).

- Key**
- PS:** PrimeSensor
  - O:** overhead (ceiling) camera
  - M:** microphone
  - R:** robot
  - A, B, C:** participant floor marks
  - X, Y:** presenter floor marks
  - DIVIDER:** opaque divider
  - - - :** PrimeSensor field of view

### Pilot Study

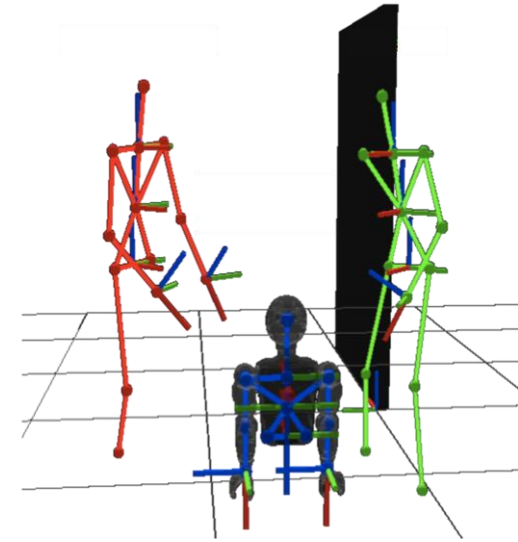
We conducted a pilot study to observe human spatial dynamics in natural interactions (approved by USC IRB #UP-09-00204). In the study, we sought to capture behaviors during transitions into (initiation) and out of (termination) social interactions [4]. *Initiation behavior* attempts to engage or recognize a potential social partner in discourse. *Termination behavior* proposes the end of an interaction.

The study was set up and conducted in a 6m-by-6m room in the Interaction Lab at the University of Southern California (Figure 4). A “presenter” and a participant engaged in an interaction loosely focused on a common object of interest—a static, non-interactive humanoid robot. The interactees were monitored by the PrimeSensor markerless motion capture system (Figure 5), an overhead color camera, and a microphone.

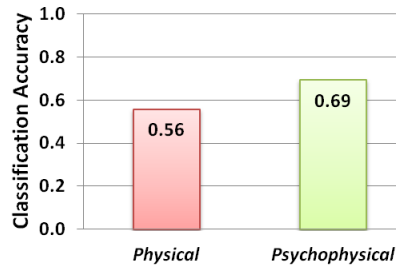
Prior to the participant entering the room, the “presenter” stood on floor marks X and Y for sensor calibration. The participant later entered the room from floor mark A, and awaited sensor calibration at floor marks B and C. Note that, from all participant locations, the physical divider obstructed the participant’s view of the presenter—thus, the participant was not aware that the presenter was in the room. The participant approached the robot (initiation). Once the participant verbally engaged the robot, the presenter was signaled to approach the participant and enter the interaction (initiation). The dialogue was open-ended and lasted five to six minutes. Once the interaction was over, the participant and presenter exited the room in different directions (termination). A comprehensive discussion of the experimental design and setup is provided in [16].

### Dataset

A total of 18 participants were involved in the study. The data collected from their interactions were annotated with the events *initiation* and *termination* based on the behavior dyad (i.e., behavior of one social agent A directed at another social agent B). The dataset provided 71 examples of initiation and 69 examples of termination. Two sets of features (representations) were considering for comparison: (a) *physical features*, capturing distance and orientation, and (b) *psychophysical features*, capturing the sensory experience of each agent. Physical features included straight-ahead distance, lateral distance, and orientation of actor B with respect to agent A [17]. Psychophysical features included kinesthetic, touch, visual, olfaction, and voice loudness codes [8, 15]. All of these features were automatically extracted using the system described in our previous work [15].



**Figure 5.** PrimeSensor joint pose estimates for each agent.



**Figure 6.** Comparison of HMM classification accuracy of initiation/termination behavior trained over *physical* and *psychophysical* feature sets.

Example / Classification	Initiation	Termination
Initiation	41	30
Termination	32	37

**Table 1.** Confusion matrix for recognizing initiation/termination behavior using a *physical* proxemic representation.

Example / Classification	Initiation	Termination
Initiation	45	26
Termination	17	52

**Table 2.** Confusion matrix for recognizing initiation/termination behavior using a *psychophysical* proxemic representation.

## Results

To examine the application of these proxemic representations, data collected from the pilot study were used to train an automated recognition system for detecting social events; specifically, the goal was to recognize *initiation* and *termination* behaviors.

For each representation (physical and psychophysical), two five-state Hidden Markov Models (HMMs) [20] were trained: one for initiation and one for termination. When a new behavior instance was observed, the models returned the likelihood of that instance being initiation or termination. Leave-one-out cross-validation was utilized to validate the performance of the models.

Table 1 presents the results when training the models using the physical features. In this case, while the system is able to discriminate between the two models, there is often misclassification, resulting in an overall accuracy of 56% (Figure 6). This is due to the inability of the physical features to capture the complexity of the environment and its impact on the agent's perception of social stimuli (in this case, the visual obstruction/divider between the two participants).

Table 2 presents results using the psychophysical features, showing a significant improvement, with an overall accuracy of 69% (Figure 6). Psychophysical features attempt to account for an agent's sensory experience resulting in a more situated and robust representation. While a larger data collection would likely result in an improvement in the recognition rate of each approach, we anticipate that the relative performance between them would remain unchanged.

## Summary and Discussion

In this work, we discussed three representations of proxemic behavior: *physical*, *psychological*, and *psychophysical*. We presented a pilot study used to collect audiovisual data of spatial dynamics during interactions between two social agents [16]. We then demonstrated the use of these data in the training of an HMM-based system for the recognition of social interaction behavior, and provided a comparison between two representations—physical and psychophysical. The results highlight the utility of the more situated psychophysical representation over the less situated physical representation. Future work will consider more complex relationships between psychological and psychophysical representations, specifically how the interagent relationship dictates the desired sensory experience of the interaction.

These representations of proxemic behavior have applications in a variety of domains. Instrumented environments, as seen in ubiquitous computing, could maximize the user perception of information in aware-homes. Wearable computing applications could detect the beginning of an interaction between the wearer and colleagues. Human-robot interaction could take advantage of these representations in the construction of autonomous proxemic controllers for sociable robots.

## Acknowledgements

This work is supported in part by an NSF Graduate Research Fellowship, as well as ONR MURI N00014-09-1-1031 and NSF CNS-0709296, IIS-0713697, IIS-0803565, and IIS-1117279 grants. We thank Louis-Philippe Morency for his insight in the experimental design process, and Mark Bolas and Evan Suma for their assistance in using the PrimeSensor.

## References

- [1] Argyle, M., and Dean, J. Eye-contact, distance, and affiliation. *Sociometry* 28, (1965), 289-304.
- [2] Bailenson, J.N., Blascovich, J., Beall, A.C., and Loomis, J.M.: Equilibrium theory revisited: mutual gaze and personal space in virtual environments. *Presence* 10, 6, (2001), 583-598.
- [3] Burgoon, J.K., Stern, L.A., and Dillman, L. *Interpersonal Adaptation: Dyadic Interaction Patterns*, Cambridge University Press (1995).
- [4] Deutsch, R.D. Spatial structurings in everyday face-to-face behavior: a neurocybernetic model. *Assoc. for the Study of Man-Environment Relations*, Orangeburg (1977).
- [5] Hall, E.T. *The Silent Language*. Doubleday Co. (1959).
- [6] Hall, E.T. A system for the notation of proxemic behavior. *American Anthropologist* 65, (1963), 1003-1026.
- [7] Hall, E.T. *The Hidden Dimension*. Doubleday Co. (1966).
- [8] Hayduk, L.A., and Mainprize, S. Personal space of the blind. *Social Psychology Quarterly* 43, 2, (1980), 216-223.
- [9] Huettenrauch, H., Eklundh, K.S., Green, A., and Topp, E.A.: Investigating spatial relationships in human-robot interaction. *Proc. IROS 2006*, IEEE (2006), 5052-5059.
- [10] Kastanis, I. and Slater, M. Reinforcement learning utilizes proxemics: an avatar learns to manipulate the position of people in immersive virtual reality. *Trans. on Applied Perception* 9, 1 (2012), 1-15.
- [11] Kendon, A. *Conducting Interaction - Patterns of Behavior in Focused Encounters*. Cambridge University Press (1990).
- [12] Kuzuoka, H., Suzuki, Y., Yamashita, J., and Yamazaki, K. Reconfiguring spatial formation arrangement by robot body orientation. *Proc. HRI 2010*, (2010), 285-292.
- [13] Mollenhuth, T. W. The personal space of hard-of-hearing children after extended contact with "normals." *British Journal of Social and Clinical Psychology* 14, 3, Cambridge University Press (1975), 253-257.
- [14] Marquardt, N., and Greenberg, S. Informing the design of proxemic interactions. *IEEE Pervasive Computing* 11, 2 (2012), 14-23.
- [15] Mead, R., Atrash, A., and Matarić, M.J. (2011) Proxemic feature recognition for interactive robots: automating metrics from the social sciences. *Proc. ICSR 2011*, SpringerLink (2011), 52-61.
- [16] Mead, R., and Matarić, M.J. An experimental design for studying proxemic behavior in human-robot interaction. *Technical Report CRES-11-001*, USC Interaction Lab (2011).
- [17] Mehrabian, A. *Nonverbal Communication*. Aldine Transaction (1972).
- [18] Mumm, J., and Mutlu, B. Human-robot proxemics: physical and psychological distancing in human-robot interaction. *Proc. HRI 2011*, (2011), 331-338.
- [19] Oosterhout, T.V., and Visser, A.: A visual method for robot proxemics measurements. *Proc. HRI 2008 WS on Metrics for HRI, Technical Report 471*, (2008).
- [20] Rabiner, L.R. A tutorial on hidden Markov models and selected applications in speech recognition. *Readings in Speech Recognition*, Morgan Kaufmann Publishers Inc. (2009), 267-296.
- [21] Schegloff, E.A. Body torque. *Social Research* 65, 3, (1998), 535-596.
- [22] Takayama, L., and Pantofaru, C. Influences on proxemic behaviors in human-robot interaction. *Proc. IROS 2009*, (2009), 5495-5502.
- [23] Walters, M.L., Dautenhahn, K., Boekhorst, R.T., Koay, K.L., Syrdal, D.S., and Nehaniv, C.L. An empirical framework for human-robot proxemics. *New Frontiers in Human-Robot Interaction*, (2009), 144-149.