

Towards Improved Prediction of Ocean Processes Using Statistical Machine Learning

Geoffrey A. Hollinger, Arvind Pereira, Valerio Ortenzi, and Gaurav S. Sukhatme

Abstract—We discuss the problem of predicting ocean currents based on historical data and ocean models. This problem is relevant to navigation of autonomous underwater vehicles (AUVs) and has significant scientific importance for analysis of biological processes and weather patterns. Available predictive models provide accurate prediction of these currents, but they typically do not provide confidence estimates of these predictions. We propose prediction methods based on Gaussian Process (GP) regression, which provide improved estimates of ocean currents and also have the potential to provide confidence bounds on these estimates. We demonstrate experimental validation on ocean current estimates from the Southern California Bight provided by the Regional Ocean Modeling System (ROMS) dataset, and we integrate these predictions into probabilistic planners to improve the safety of operation of a simulated AUV. While our techniques achieve modest performance improvements thus far (the work reported here is at an early stage), they show potential for significantly improving the prediction of ocean processes for environmental monitoring applications.

I. INTRODUCTION

Sensing and monitoring of ocean processes is becoming increasingly important for science and exploration. The improved capabilities of satellite monitoring along with sensors like HF-Radar have allowed accurate predictions of ocean currents, temperature, and other processes. In addition to their scientific importance, estimation of these values has the potential to improve the navigation capabilities of ships and underwater vehicles. In particular, we are interested in better path planning for autonomous underwater vehicles (AUVs) operating in the open ocean [1], [2],

One of the gold standards for ocean process predictions is the publicly available Regional Ocean Modeling System (ROMS) [3]. Figure 1 shows example currents predicted by ROMS in the Southern California Bight region. ROMS uses forward simulation of ocean processes with sophisticated models to predict processes at the current time and several days in the future. ROMS data has been used by several research groups to improve the navigation capabilities of autonomous vehicles and improve the safety of their operation [4], [5]. Lower bounds on navigation error have also

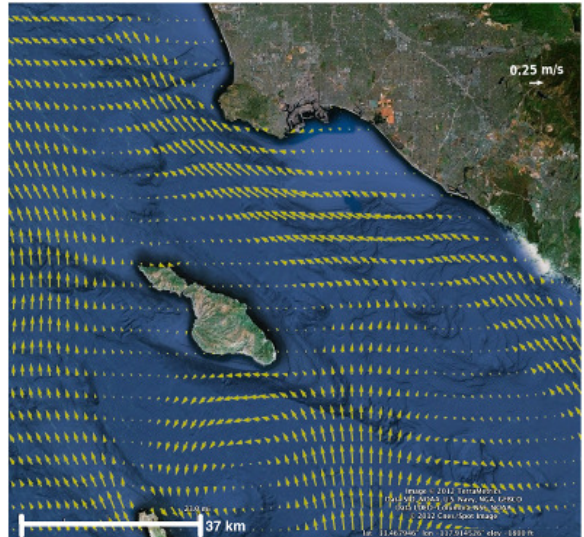


Fig. 1. Ocean currents in the Southern California Bight region predicted by Regional Ocean Modeling Systems (ROMS) [3]. We propose data-driven methods to improve these predictions, and we integrate the resulting ocean currents into a probabilistic planner to improve the safety of autonomous underwater vehicle operation.

been derived to estimate the path following performance of underwater vehicles [6].

Prior work has examined the development of confidence measures for various ocean processes using straightforward statistical tools [7] as well as more sophisticated Bayesian models [8]. In [9], a comprehensive method for the quantification, prediction and estimation of uncertainties for ocean dynamics is described, along with the challenges involved in modeling ocean fields of very large scales. A rigorous computational method called Error Subspace Statistical Estimation (ESSE) is described with several illustrative examples for its use. ESSE has components of time-varying basis functions, multi-scale initializations, and stochastic ensemble predictions, which are combined with data-assimilation. However, ESSE does not provide approximate governing equations for the time-evolving error covariance bases, and it is best suited for data-assimilation of complex processes.

The widely available ROMS predictions utilize sophisticated models of ocean processes and forward simulations of prior data, but they do not provide a mechanism for utilizing historical trends that arise when examining large quantities of time-series data. To better incorporate the historical predictions, we propose a data-driven augmentation to the ROMS predictions using statistical machine learning.

G. Hollinger, A. Pereira, and G. Sukhatme are with the Department of Computer Science, Viterbi School of Engineering, University of Southern California, Los Angeles, CA 90089 USA, {gahollin, gaurav, menezesp}@usc.edu.

V. Ortenzi is with the Department of Computer, Control and Management Engineering Antonio Ruperti, Sapienza Università di Roma, Italy, valerio.ortenzi@gmail.com

This research has been funded in part by the following grants: ONR N00014-09-1-0700, ONR N00014-07-1-00738, ONR N00014-06-10043, NSF 0831728, NSF CCR-0120778 and NSF CNS-1035866.

We utilize Gaussian Processes (GPs) to perform this task, which have the added advantage of providing an estimated variance of predictions that can act as confidence measures. GPs have been used successfully to improve the accuracy of such tasks as large-scale terrain modeling [10], scientific planetary surveying [11], and robotic grasping [12].

The key novelties of this paper are (1) the use of historical data in a non-parametric learning framework to improve predictions of ocean currents, and (2) the derivation of confidence bounds on these estimates that are easily integrated into the navigation of AUVs. The remainder of this paper is organized as follows. We first discuss methods and algorithms for improving the prediction of ocean currents, and we integrate these predictions into AUV navigation frameworks (Section II). We then present data processing experiments on historical data that quantify the benefits of our approach, and we discuss avenues for short-term and long-term future work (Section III)

II. METHODS AND ALGORITHMS

The goal is to improve the prediction of ocean currents on the surface and at depth given both historical data and predictions from ROMS. Rather than developing a system to compete with ROMS, we propose augmenting the available ROMS predictions through the use of Gaussian Process learning methods. In this paper, we focus on the prediction of surface currents, due to the better availability of accurate HF-Radar measurements for these currents.

The ocean currents at a given latitude lat , longitude lon , and time t are represented by a vector $c(lat, lon, t) = (u, v)$, where u and v are the components of the currents along the latitude and longitude axes respectively. The positions are discretized based on the latitude and longitude, and time is discretized into hours. At a given time T , we are given historical data for times $t = \{T-1, T-2, \dots\}$ back several months or years. We are also given predictions from the ROMS data for $t = \{T+1, T+2, \dots, T+48\}$ (two days in the future). Given this data, we want to provide better predictions for the points of time in the future as well as confidence bounds for these predictions.

A. Gaussian Process Prediction

We propose modeling ocean currents using non-parametric Bayesian regression in the form of Gaussian Processes (GPs) [13]. A GP models a noisy process $z_i = f(\mathbf{x}_i) + \varepsilon$, where $z_i \in \mathbb{R}$, $\mathbf{x}_i \in \mathbb{R}^d$, and ε is Gaussian noise.

We are given some data of the form $D = [(\mathbf{x}_1, z_1), (\mathbf{x}_2, z_2), \dots, (\mathbf{x}_n, z_n)]$, where \mathbf{x}_i represents a vector of latitude, longitude, and time values for a data point i , and z_i represents either the u or v component of the currents at that point and time. We note that this formulation decouples the prediction of u and v , an assumption that could be relaxed in future work (e.g., using the techniques in [14]). We refer to the $d \times n$ matrix of \mathbf{x}_i vectors as \mathbf{X} and the vector of z_i values as \mathbf{z} .

To fully define a GP, we must choose a covariance function that relates the points in \mathbf{X} to each other. We expect that data

points that are close to each other in time and space will have high correlations, which provides a smoothing effect on the data. In addition, there is a periodic effect that arises due to tidal processes, which creates a correlation between points that are separated by 12 hours, 24 hours, etc. To capture both the spatial correlations and the periodic correlations, we apply the following kernel based on the squared exponential:

$$k(\mathbf{x}_i, \mathbf{x}_j) = \sigma_f^2 \exp[-w_{lat}(\mathbf{x}_i^{lat} - \mathbf{x}_j^{lat})^2 - w_{lon}(\mathbf{x}_i^{lon} - \mathbf{x}_j^{lon})^2 - w_t(\mathbf{x}_i^t - \mathbf{x}_j^t)^2 - w_p \sin^2(\pi(\mathbf{x}_i^t - \mathbf{x}_j^t)/12)]. \quad (1)$$

The hyperparameter σ_f^2 represents the process noise, and the hyperparameters w_{lat} , w_{lon} , w_t , and w_p represent weighting for the latitude, longitude, time, and periodic correlations. Having defined the kernel, combining the covariance values for all points into an $n \times n$ matrix \mathbf{K} and adding a Gaussian observation noise hyperparameter σ_n^2 yields $\mathbf{K}_z = \mathbf{K} + \sigma_n^2 \mathbf{I}$.

The following equation predicts the mean function value (u or v value) \bar{f}_* and variance $\mathbb{V}[f_*]$ at a selected point \mathbf{x}_* given the historical and prediction training data:

$$\bar{f}_* = \mathbf{k}_*^T (\mathbf{K} + \sigma_n^2 \mathbf{I})^{-1} \mathbf{z}, \quad (2)$$

$$\mathbb{V}[f_*] = k(\mathbf{x}_*, \mathbf{x}_*) - \mathbf{k}_*^T (\mathbf{K} + \sigma_n^2 \mathbf{I})^{-1} \mathbf{k}_*, \quad (3)$$

where \mathbf{k}_* is the covariance vector between the selected point \mathbf{x}_* and the training inputs \mathbf{X} . This model provides a mean and variance for a particular latitude, longitude, and future time. An important aspect of this model is the derivation of a variance, which provides a measure of confidence of each prediction based on the correlations of the points used to predict it.

The modeling technique proposed above can be used for small datasets. However, the ROMS datasets correspond to vast periods of time and a large portion of space. The computation time required by the GP scales $O(n^3)$ in the number of data points, which makes it infeasible for any large dataset more than approximately 2000 points. As an alternative, we propose estimating the predictions using a subset of the data corresponding to the points we expect to be most correlated. To choose these points, we store the data in a KD-tree, where the relative weighting of space and time are adjusted to fit the values in the kernel (e.g., the periodic correlations are preserved). Such techniques have been applied successfully for terrain modeling [10], though we believe their application to time-series data is novel.

The estimation of the kernel hyperparameters $\theta = (\sigma_f, \sigma_n, w_{lat}, w_{lon}, w_t)$ in large-scale Gaussian Processes is also a challenging task. The standard method is maximizing the likelihood of the measurements given the data and the hyperparameters [13]:

$$\log p(\mathbf{z}|\mathbf{X}, \theta) = -\frac{1}{2} \mathbf{z}^T \mathbf{K}_z^{-1} \mathbf{z} - \frac{1}{2} \log |\mathbf{K}_z| - \frac{n}{2} \log 2\pi, \quad (4)$$

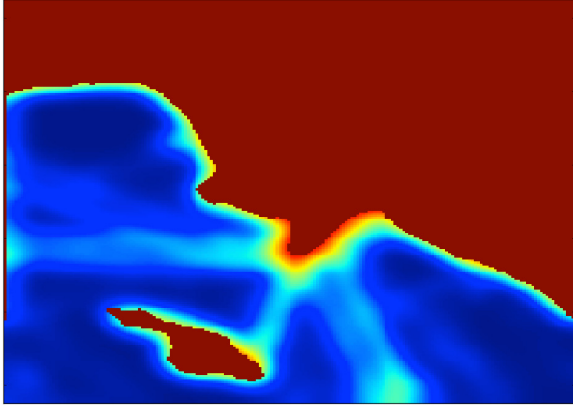


Fig. 2. Risk map built for the Southern California coastal ocean that shows areas of high collision risk in red, high shipping activity in light blue and low shipping activity in dark blue. The bright red areas are Catalina island and the California coast. Our goal is to plan risk-aware paths for AUVs that avoid the shipping lanes. To accomplish this goal, we utilize prediction of the ocean currents.

where $\mathbf{K}_z = \mathbf{K} + \sigma_n^2 \mathbf{I}$. This likelihood can be maximized using conjugate gradient optimization for small and moderately sized datasets. For the large ROMS dataset, we use a block learning approach that learns hyperparameters for subsets of the data and then averages across many of these subsets to yield the final hyperparameter values. We use this method to learn separate hyperparameters for each day.

B. Probabilistic and Game Theoretic Planners

The methods described above can be incorporated into path planners for AUVs to improve the safety and reliability of operation. Path planners that incorporate data from ocean currents clearly stand to benefit from improvements in the accuracy of ocean current predictions. In addition, confidence estimates are useful both for planners that reason probabilistically as well as for planners that reason about worst-case instances. In particular, we are interested in improving the safety of operation of AUVs by avoiding areas with high probability of encountering a dangerous ship. Figure 2 shows a risk map built from historical data showing areas of the Southern California coast with high level of shipping activity. We now examine how the proposed GP prediction methods could be useful for improving the paths generated by such planners.

We propose using ROMS data to generate action models for AUVs for locations in the ocean that exhibit good temporal autocorrelations. Autocorrelation is a commonly used tool in statistics and time series analysis, and is usually defined (for a second-order stationary process X_t with mean μ , variance σ , and lag τ) as shown in Equation 5. The normalized form of autocorrelation is a number in the range $[-1, 1]$, where 1 indicates perfect correlation, while -1 indicates perfect anti-correlation:

$$R(\tau) = \frac{E[(X_t - \mu)(X_{t+\tau} - \mu)]}{\sigma^2} \quad (5)$$

ROMs provides forecasts up to two days in advance, which allows us to develop action models for vehicles that utilize

these ocean predictions. We find that for most locations in the Southern California Bight during the first six months of 2011, ocean current magnitudes have an autocorrelation coefficient of at least 0.5 at 48 hour lag. In our discretized planning graph, we eliminate locations which exhibit poor auto-correlations by the end of 48 hours. We plan to evaluate two risk-averse path planners for AUVs, which utilize probabilistic action models based upon ocean predictions - (1) a Minimum Expected Risk (MER) planner based upon a continuation of work described in [5], and (2) a Markov Decision Process (MDP) planner.

The transition model we use relies upon a discrete grid of states for the AUV in the ocean, with possible actions being the choice of moving from one state to any of its 8-connected neighbors. The grid is built by performing a number of simulations (> 30) for the AUV traversing each pair of grid locations under the influence of ocean currents with different times of start for each simulation to generalize for temporal variations. The distribution of surfacing locations for each set of trials gives us an estimate of the transition function for that action. This transition function $T(s''|s, a(s, s'))$ describes the probability of ending up in state s'' , given we choose to take action a (state s to state s').

The MER planner minimizes the expected risk by solving shortest paths between start and goal vertices on a graph whose edges e are given by:

$$\|e(s, s')\| = \sum_{s''} T(s''|s, a(s, s')) R(s''), \quad (6)$$

where $R(s'')$ is the risk of collision if the AUV were to surface at state s'' (e.g., with a passing ship in areas of high shipping traffic).

The MDP planner instead uses the underlying transition function above to perform Bellman-updates in a planning graph where the rewards $R(s)$ are given by negative risk. The Bellman-updates to compute the utility values U , if value iteration is used to find the optimal policy, are described by:

$$U_{i+1}(s) \leftarrow -R(s) + \underset{a}{\operatorname{argmax}} \sum_{s''} T(s''|s, a(s, s')) U_i(s') \quad (7)$$

More accurate ocean current predictions will improve the performance of the probabilistic planners described above by providing them more accurate probabilistic transition models. An alternative to utilizing a probabilistic planner is to implement one based on a game-theoretic approach. First proposed in [15], the game-theoretic planning framework (and its subsequent modifications) builds on the concept of minimizing the maximum loss an antagonist (in our case, the ocean currents) can inflict. In particular, the problem can be modeled in two slightly different ways:

- 1) as a one-player game where Nature is used to model sources of disturbances (Nature's actions are independent from the player's actions);
- 2) as a two-player game where Nature is assumed to be a rational "evil" player whose aim is to maximize the AUV's loss function.

In the case of planning with ocean currents, the AUV’s loss function corresponds to deviation from the linear path to the goal.

These methods and other variations on the theme (e.g., adversarial nature playing mixed strategies for Nash Equilibrium [16]) are based on worst-case computations and, although in their early stages, show encouraging preliminary results in cases with strong ocean currents. In particular, when the angular direction and magnitude of the ocean currents are modeled as a bounded set, the estimation of confidence intervals plays a key role for game-theoretic planners (i.e., the planner is particularly sensitive to changes in the estimation of Nature’s action set). More formally, estimations can be computed either over the scalar components u and v or directly over the directions and magnitudes of the ocean currents. We propose calculating set boundaries as follows:

- 1) $\bar{x} \pm 2\sigma$,
- 2) $\bar{x} \pm t_{\alpha/2}(\sigma/\sqrt{n})$ (confidence intervals, see [17]),

where \bar{x} is the mean value, σ is the standard variation, n the number of samples used to extract the statistical quantities, and $t_{\alpha/2}$ a coefficient associated with the t-distribution, the confidence degree, and n . Within this framework, the confidence intervals derived above in the probabilistic GP framework have the potential to provide improved performance for game-theoretic AUV path planning.

III. EXPERIMENTS AND DISCUSSION

A. Prediction of ocean currents

We present preliminary results that improve the predictions of the ROMS models currently in widespread usage. We learned the GP kernel hyperparameters independently for each day by dividing the training data from each day into 500 measurement blocks and then estimating the hyperparameters for each block using conjugate gradient optimization. The final hyperparameter values for a day were then found by averaging over all blocks. Using this block learning approximation and the KD-tree inference approximation, the GP took approximately 6 minutes to compute all predictions for a single day. These results use 100 points in the space/time KD-tree for the local GP prediction at each point. There are a total of 2560 locations that are estimated over a 24 hours period for both two-day and one-day predictions (total of 123,880 point predictions per day). The data processing was performed on a single desktop with a 3.2 GHz Intel i7 processor with 9 GB of RAM. The proposed method is also highly parallelizable, since the hyperparameter estimation of each block is independent, and the prediction for each point can be performed independently once the hyperparameters are learned and the KD-tree is built.

We compare the predictions using the GP to those generated by the ROMS “nowcast” that integrates satellite and remote sensing measurements (only the forecast and historical data for a given day were used for the GP predictions). For the example day presented in Figure 3 (October 11, 2011), our proposed method achieves average improvements of 3.8% for one-day prediction and 13.0%

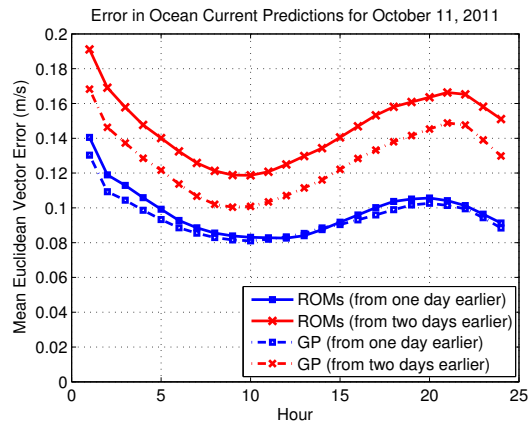


Fig. 3. Error for one-day and two-day predictions of surface currents using ROMS and the proposed GP learning method for October 11, 2011. The learning method achieves on average 3.8% improvement for the one-day prediction and 13.0% improvement for the two-day prediction. The hyperparameters of the GP were trained on data from October 10 for the one-day predictions and October 9 for the two-day predictions (which would be available when making the predictions).

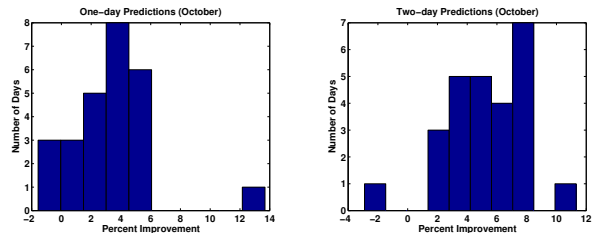


Fig. 4. Histograms of percent improvements for the GP learning method versus the ROMS predictions for all days in October. Nearly all days show improvement from the learning method, with some days showing improvements greater than 10%. The learning algorithm achieves average improvement of 3.2% for one-day predictions and 5.2% for two-day predictions over the entire month of October.

for two-day predictions.¹ The hyperparameters for this day’s predictions were trained using data from October 9, 2011 for the two-day predictions and October 10, 2011 for the one-day predictions (which would be available at the time the predictions would be made). We also ran the learning method over the entire month of October by learning separate hyperparameters for each day. Figure 4 shows a histogram of the improvements across the entire month. The majority of days showed improvements between 1% and 6% for one-day predictions and between 2% and 9% for two-day predictions. The average improvement over the entire month was 3.2% one-day predictions and a 5.2% improvement for two day predictions.

In addition to improved predictions, our method provides confidence measures based on the underlying variance within the GP. This variance measure has the potential to improve the path planning capabilities of autonomous vehicles operating in the ocean current field (e.g., the vehicle could

¹The mean Euclidean vector error is calculated for two vectors $\mathbf{c}_i = (u_i, v_i)$ and $\mathbf{c}_j = (u_j, v_j)$ as $E(\mathbf{c}_i, \mathbf{c}_j) = \sqrt{(u_i - u_j)^2 + (v_i - v_j)^2}$. The mean Euclidean vector error is taken over the entire area of interest in the Southern California Bight (shown in Figure 1).

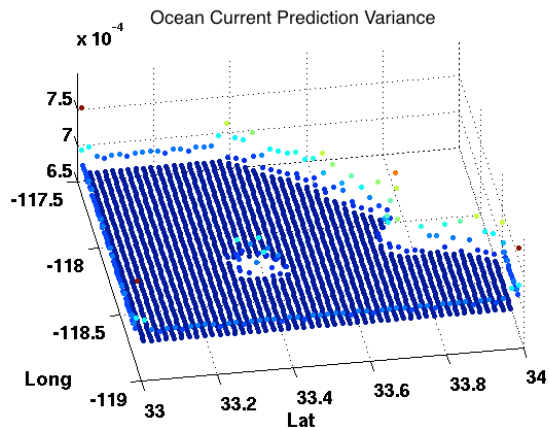


Fig. 5. Map of predicted variance (uncertainty) values using Gaussian Process regression for two-day predictions of the ocean currents on October 11, 2011. The currents near land and near the island (hole in the center) have higher predicted variance and are more likely to be incorrect.

avoid high uncertainty areas with unfavorable currents in favor of more certain areas with favorable currents). Figure 5 shows an example variance map for a day in October. In the formulation above, the variance prediction provides an estimate of error due exclusively to data sparsity, which stems from the use of the squared exponential kernel in time and space. Since the ROMS data are available at high resolution across time and space, this value provides a limited measure of confidence that is fairly homogeneous. Alternative methods that match historical prediction inaccuracy with current predictions could be used to improve these estimates.

B. Risk-aware AUV planning

We now present results for risk-aware planners that utilize the predictions of ocean currents described in the previous section. We performed 7560 simulations on a regular grid (10 km spacing between adjacent nodes) overlaid on the risk map shown in Figure 2. We compared the performance of three planners that seek to minimize the risk of collision between the AUV and obstacles in the region: i) MDP - Markov Decision Process, ii) MER- Minimum Expected Risk (both ROMS-aware planners described in section II-B), and iii) Min-Risk - Minimum-Risk planner (ROMS un-aware planner) described in [5]. We report simulation results from two ocean current magnitude regimes – low-speed in Table I and high-speed in Table II. Figure 6 shows histograms of the current magnitudes for these two days.

In the month of February, when the ocean currents are fairly slow, the MER planner outperforms both the MDP and the Min-Risk planners with a 94.1% success rate. The differences in average risk values (for successful paths) for all three planners, and their path lengths are not statistically significant. We notice that in January, all the planners have low success rates, with the MDP getting to the goal only 27.6% of the time and both the MER and Min-Risk planners having nearly 10% higher success rates. Despite the high rates of incompleteness, we note that since the currents are very strong, the behavior exhibited by the MDP of moving

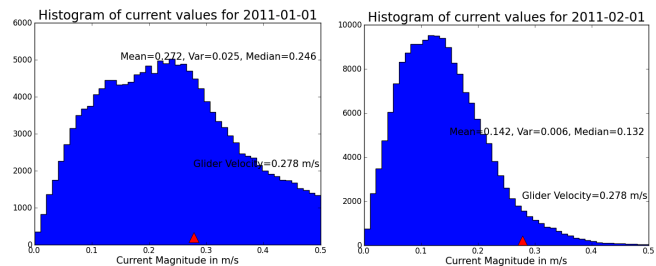


Fig. 6. Histograms of ocean current magnitudes for the 1st day of the months of January and February 2011 obtained from the ROMS data. Note that most currents in February are much slower than the gliders velocity, whereas January has a number of ocean currents that move faster than the nominal glider velocity.

to a safe low-risk location instead of risking crashes by making it to the goal are preferable choices to avoid crashes. The Min-Risk planner has the highest percentage of crashes since it is unaware of the strength of the currents. Thus, the conservative MDP performs best in circumstances when there are high-velocity in the region, while the MER planner has superior performance when the glider is faster than the ocean currents (primarily due to its goal-directed behavior while also being ROMS-aware).

As expected, both of the ROMS-aware planners (MDP and MER) outperform the Min-Risk planner and significantly reduce collisions with land. The benefit is especially apparent when the velocities of the ocean currents are faster than the operating speed of the glider. Improved predictions of ocean currents with tight bounds on prediction variance have the potential to increase the benefit of these probabilistic planners and improve the safety of AUV operation.

TABLE I
RESULTS FROM SIMULATIONS FOR FEB 2011

Planner	MDP	Min-Expected Risk	Min-Risk
Success	88.7%	94.1%	87.8%
Crashes	0.0%	0.0%	0.0%
Incomplete	11.3%	5.9%	12.2%
Avg. Risk	1.32	1.32	1.15
Path Len.	56.3 km	54.5 km	54.9 km

TABLE II
RESULTS FROM SIMULATIONS FOR JAN 2011

Planner	MDP	Min-Expected Risk	Min-Risk
Success	27.6%	36.8%	37.8%
Crashes	0.0%	0.3%	2.1%
Incomplete	72.3%	62.9%	60.2%
Avg. Risk	1.48	1.305	1.529
Path Len.	53.6 km	54.9 km	58.0 km

IV. CONCLUSIONS AND FUTURE WORK

This paper has shown that it is possible to improve the prediction of ocean currents using data-driven machine learning methods. We have proposed the application of time-series Gaussian Process regression to ocean current estimation, and

we have shown modest gains for a representative month of predictions. In addition, we have integrated our estimates into risk-aware planning methods for AUVs, and we have shown that we can improve the safety of autonomous operation in the open ocean by utilizing models of the ocean currents.

We believe these preliminary results show significant promise for the use of statistical machine learning methods to improve the estimation of ocean processes. We note, however, there are a number of improvements that are avenues for future work. In the short term, we plan to examine more sophisticated methods for automatically learning the hyperparameters based on large amounts of historical data as well as alternative methods for generating confidence measures of the predictions. We also plan to integrate our predictions and confidence measures into the navigation system of the Slocum Glider AUV. Longer-term future work includes applications of such techniques to temperature and other ocean processes, as well as exploring the life-long learning capabilities of such approaches when presented with increasing amounts of historical data.

REFERENCES

- [1] N. E. Leonard, D. A. Paley, R. E. Davis, D. M. Fratantoni, F. Lekien, and F. Zhang, "Coordinated control of an underwater glider fleet in an adaptive ocean sampling field experiment in monterey bay," *J. Field Robotics*, vol. 27, no. 6, pp. 718–740, 2010.
- [2] D. A. Paley, F. Zhang, and N. E. Leonard, "Cooperative control for ocean sampling: The glider coordinated control system," *IEEE Trans. Control Systems Technology*, vol. 6, no. 4, 2008.
- [3] A. F. Shchepetkin and J. C. McWilliams, "The Regional Oceanic Modeling System (ROMS): a split-explicit, free-surface, topography-following-coordinate oceanic model," *Ocean Modelling*, vol. 9, no. 4, pp. 347–404, 2005.
- [4] C. Fernández-Perdomo, J. Cabrera-Gómez, D. Hernández-Sosa, J. Isern-González, A. C. Domínguez-Brito, A. Redondo, J. Coca, A. G. Ramos, E. A. Fanjul, and M. García, "Path planning for gliders using Regional Ocean Models: Application of pinzón path planner with the ESEOAT model and the RU27 trans-Atlantic flight data," in *Proc. IEEE OCEANS Conf.*, 2010, pp. 1–10.
- [5] A. M. Pereira, J. Binney, B. H. Jones, M. Ragan, and G. S. Sukhatme, "Toward risk aware mission planning for autonomous underwater vehicles," in *IEEE/RSJ Int. Conf. Intelligent Robots and Systems*, 2011, pp. 3147–3153.
- [6] K. Szwaykowska and F. Zhang, "A lower bound on navigation error for marine robots guided by ocean circulation models," in *Proc. IEEE/RSJ Int. Conf. Intelligent Robots and Systems*, 2011, pp. 3584–3588.
- [7] C. J. Willmott, R. E. Davis, J. J. Feddema, K. M. Klink, D. R. Legates, C. M. Rowe, S. G. Ackleson, and J. O'Donnell, "Statistics for the evaluation and comparison of models," *Journal of Geophysical Research*, vol. 90, no. C12, pp. 8995–9005, 1985.
- [8] M. C. Kerman, W. Jiang, A. F. Blumberg, and S. E. Buttrely, "A comparison of robust metamodels for the uncertainty quantification (UQ) of New York Harbor oceanographic data," *Journal of Operational Oceanography*, vol. 1, no. 2, pp. 3–13, 2008.
- [9] P. F. Lermusiaux, "Uncertainty estimation and prediction for interdisciplinary ocean dynamics," *Journal of Computational Physics*, vol. 217, pp. 176–199, 2006.
- [10] S. Vasudevan, F. T. Ramos, E. W. Nettleton, and H. F. Durrant-Whyte, "Gaussian process modeling of large scale terrain," *J. Field Robotics*, vol. 26, no. 10, pp. 812–840, 2009.
- [11] D. Thompson and D. Wettergreen, "Intelligent maps for autonomous kilometer-scale science survey," in *Proc. Int. Symp. Artificial Intelligence, Robotics and Automation in Space*, 2008.
- [12] S. Dragiev, M. Toussaint, and M. Gienger, "Gaussian process implicit surfaces for shape estimation and grasping," in *IEEE Int. Conf. Robotics and Automation*, 2011.
- [13] C. E. Rasmussen and C. K. I. Williams, *Gaussian Processes for Machine Learning*. The MIT Press, 2006.
- [14] M. A. Álvarez and N. D. Lawrence, "Computationally efficient convolved multiple output gaussian processes," *Journal of Machine Learning Research*, vol. 12, pp. 1425–1466, 2011.
- [15] S. M. LaValle, "A game-theoretic framework for robot motion planning," Ph.D. dissertation, University of Illinois, Urbana, IL, July 1995.
- [16] P. K. Dutta, *Strategies and Games. Theory and Practice*. MIT Press, 1999.
- [17] D. T. Larose, *Discovering Knowledge in Data. An Introduction to Data Mining*. Wiley, 2005.