

Hands-off Assistive Robotics for Post-Stroke Arm Rehabilitation

Jon Eriksson¹, Maja J. Matarić² and Carolee J. Winstein³

^{1,2}Robotics Research Laboratories
Department of Computer Science
University of Southern California
941 West 37th Place
Los Angeles, CA 90089-0781

jonerik | mataric@robotics.usc.edu

³Motor Behavior and Neurorehabilitation Lab
Dept. of Biokinesiology and Physical Therapy
University of Southern California
1540 E. Alcazar St., CHP-155
Los Angeles, CA 90089-9006
winstein@usc.edu

Abstract—This paper describes an autonomous assistive mobile robot that aids stroke patient rehabilitation by providing monitoring, encouragement, and reminders. The robot navigates autonomously, monitors the patient's arm activity, and helps the patient remember to follow a rehabilitation program. Our experiments show that patients post-stroke are positive about this approach and that increasingly active and animated robot behavior is positively received by stroke survivors.

I. INTRODUCTION

This project aimed to develop an autonomous assistive mobile robot that could aid persons post-stroke with arm disabilities during their rehabilitation. By encouraging the patient to use the disabled arm, and by monitoring progress, the robot would provide support and motivation when regular physical therapy is not suitable or available. Thus, the robot may increase the rate and amount of recovery as well as the general well-being of stroke survivors. This work is part of our ongoing effort toward the development of novel human-robot interaction techniques for non-contact (hands-off) mobile robots, which is being incrementally evaluated and improved through experiments with patients.

Stroke is a major cause of neurological disability. Most of those affected are left with some movement disability. Through concerted use and training of the affected limb during the critical post-stroke period, such disability can be significantly reduced [1]. The rate and amount of recovery greatly depends on the amount of focused training. Evidence shows that the intensity and frequency of focused therapy can improve functional outcomes [2]. However, since such rehabilitation normally requires supervision of trained professionals, lack of resources limits the amount of time available for supervised rehabilitation. As a result, the quality of life of stroke patients is permanently reduced, and medical costs and lost productivity continue to be incurred.

In this work, we propose the use of an assistive mobile robot (Figure 1) as a complement to conventional physical therapy and rehabilitation, as a means of addressing the above challenges of intensive rehabilitation. The approach involves the development of a safe, user-friendly, and affordable mobile robot that is capable of following the patient in the home or hospital environment. The robot monitors the patient's use of the stroke-affected limb, provides

encouragement, guidance, and reminders. It also logs the patient's movement of the affected limb and keeps track of rehabilitation progress for reporting to the physical therapist. The patient's arm movement is registered with a light-weight inertial measurement unit (IMU) worn on the forearm much like a wristwatch. The robot behaves in response to the sensed movements of the affected limb. For instance, it provides gentle reminders to the patient if the affected arm has not been active for some period, and praise and encouragement if it has. The robot is also able to report performance data in analytical form to the rehabilitation staff, who can then use it to fine-tune the robot-assisted therapy.

Our approach to robot-assisted hands-off rehabilitation is based on an already validated post-stroke therapy method, which constrains the patient's use of the healthy limb in order to encourage the use and thus recovery of function in the stroke-affected one [3]. This process of exercising toward regaining lost movement is cumbersome and can be very frustrating for the patient. The robot's task is to, in part, provide monitoring and reminding, but also in part to serve as a friendly companion during a difficult time. While the robot tracks and follows the patient by default, it leaves when asked to; it is designed to be welcomed by the patient, not to be annoying, ignored, and shut off. Our work so far has been in validating patients' acceptance of a robot with a few simple behaviors; our ongoing work continues to improve the robot's capabilities of engaging the patient.

II. RELATED WORK

Because of the growing elderly population and thus the predicted rise in stroke [4], much effort has been made during the past decade to improve post-stroke rehabilitation. A robot-assisted arm therapy workstation has been developed for training upper limbs and evaluating limb performance [5]. A number of similar devices employing hands-on rehabilitation robotics technology have been developed [6] and investigated [7], [8]. In general, such mechanical devices are worn by the patient during exercises, and use built-in sensors to measure generated limb forces and movement. Results suggest that using such mechanical assistive guides seems to be sufficient for enhancing movement recovery but not that it is necessary. It appears that the purposeful,

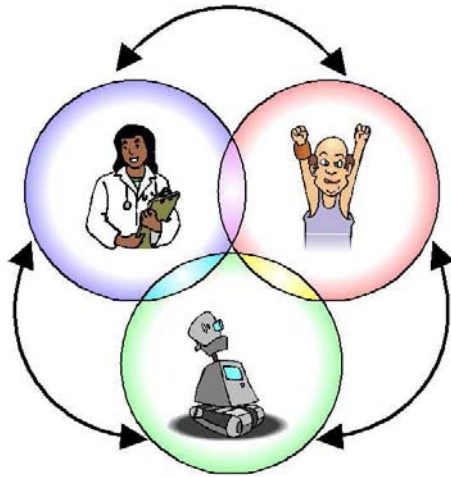


Fig. 1. An illustration of the interaction among the physical therapist, patient, and robot in the context of robot-assisted stroke rehabilitation. The robot does not attempt to take the role of the trained professional; instead it helps the patient by providing time-extended and individualized attention.

meaningful functional task practice is the primary stimulus for arm movement recovery.

The above devices all depend on physical contact between the patient and the robot, raising issues of safety, affordability, and feasibility for in-home use. A non-contact approach of the type we propose raises fewer of those concerns. Furthermore, by focusing on regular activities and tasks performed in daily life rather than constrained repetitive exercises, the patients can be more easily motivated to perform time-extended rehabilitation activities, potentially resulting in improved overall recovery outcomes.

Research shows that pet ownership increases health and emotional well-being of elderly [9]. Moreover, it has been demonstrated that people often attribute animal or human characteristics to even simple robot pets [10]. These inherently human tendencies provide a grounding for the hands-off assistive robot rehabilitation methods we describe, which are aimed at having a positive effect on both patient recovery and perceived quality of life.

III. DESIGN

The robot uses a standard Pioneer2 DX mobile robot base. A SICK LMS200 scanning laser range finder enables it to find and track the patient’s legs. For obstacle avoidance, the laser was used together with the on-board ultrasound array. A Sony pan-tilt-zoom (PTZ) camera enabled the robot to “look” at the patient and away, shake its “head” (camera), and make other communicative actions. The camera could also be used to find and track a patient wearing colored markers (as was done in an earlier set of experiments we performed). A speaker produced pre-recorded or synthesized speech and sound effects. To monitor arm movement, the patient wore a sensor based on an inertial measurement unit (IMU), which sent data wirelessly to the robot in real time.



Fig. 2. The robot and a stroke patient during an experiment, where the desired activity is to shelve books. The arm sensor is visible on the patient’s right forearm; the patient also wears laser fiducials on her leg to make it easier for the robot to recognize and follow her.

We used a behavior-based system [11], [12] for control. Behavior pre- and postconditions [13] were designed to properly coordinate behavior execution in response to real-time feedback from the sensors. The software was implemented using the Player robot device server [14].

IV. EVALUATION

While our goal is eventual unmonitored use, the experiments described here used a prototype system that was tested in a controlled environment. We focused on the study of how different robot behaviors affect the patients’ willingness to comply with the rehabilitation program. Specifically, we tested different voices, movements, and levels of patience on the part of the robot and correlated those with patient compliance. Exit interviews and questionnaires were also administered to all the patients in the study.

A. Experiments

The system was evaluated in three sessions, each of which featured two subjects. The first session was performed with a non-patient user, while the other two were conducted with stroke survivors. All sessions took place in rehabilitation research labs at the USC Health Sciences Campus. The stroke patients were middle-aged, and their disabled limbs were sufficiently mobile to perform the activities in the experiments. Of the six subjects, two were women. The experiments lasted about one hour per person. Every evaluation session comprised six experimental runs. Thus, a total of 36 experiments were performed.

1) *Activities:* In all experiments, the robot asked the patient to perform one of two activities. The first activity was to shelve books; its difficulty could easily be adjusted by using books with different weights and varying the height of the bookshelf (Figure 2). The robot used the arm motion data to determine whether the activity was performed properly. As

