

Tracking Multiple Moving Targets using a Camera and Laser Rangefinder*

Boyoon Jung and Gaurav S. Sukhatme

boyoon|gaurav@robotics.usc.edu

Robotic Embedded Systems Laboratory

Robotics Research Laboratory

Department of Computer Science

University of Southern California

Los Angeles, CA 90089-0781

Abstract

We propose a target tracking system based on a camera and laser rangefinder. Two trackers have been developed: a laser-based tracker and a vision-based tracker. They detect moving or bright-colored targets, and report the positions of the targets in a coordinate system rigidly attached to the sensors. Both trackers have been implemented and tested with stationary sensors embedded in an office environment and mobile robots.

1 Introduction

Target tracking is a well studied problem, especially in computer vision [1, 3, 4]. Vision-based moving-target trackers deal with a real world problem, but they require very high computation. In addition, the trackers are complicated when distance to a target needs to be computed.

We have developed a simple target tracking system which uses a camera and laser rangefinder. Two trackers have been developed: a laser-based tracker and a vision-based tracker. Our trackers are relatively simple by design, and have several limitations. However, they provide a real-time response with a small amount of computation, and are useful for experiments in restricted environments.

*This work is sponsored in part by DARPA grant DABT63-99-1-0015 and NSF grants ANI-9979457 and ANI-0082498

The function of the trackers is to search for moving or bright-colored objects (called targets) using sensors, and to report the positions of the targets based on the current positions of the sensors. These trackers have been implemented and tested with stationary, environment-embedded sensors and mobile robots. Player¹ was used as an interface between the control program and actual sensors. Stage² was used for initial code verification. Player and Stage were developed at the USC Robotics Research Labs and are freely available under the GNU Public License from <http://robotics.usc.edu/player/>.

2 Laser-based Tracker

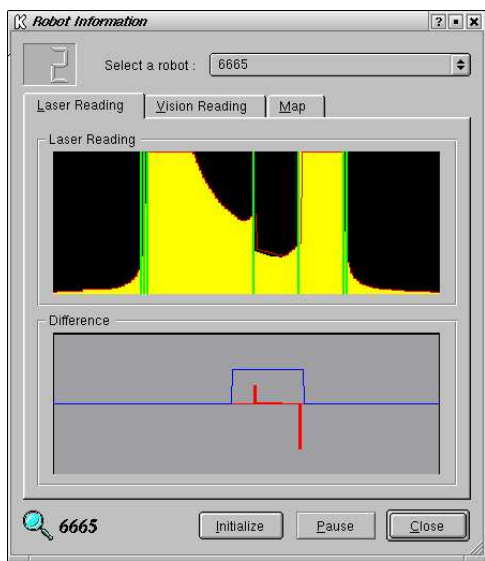
The laser-based tracker uses the SICK laser rangefinder. It reads the laser rangefinder at 10 Hz and analyzes the data to find moving objects using scan differencing between consecutive laser readings. A big difference is attributed to a moving object. For accurate tracking, a simple edge detection algorithm is used. The brief algorithm is:

1. read a new laser reading.
2. calculate the difference between the new scan and the immediately previous one.
3. apply a smoothing filter to the difference.
4. segment the new laser reading using edge information.
5. select segments that have high scan differencing signal.
6. report the center positions of these segments.
7. save the new laser reading for the next iteration.

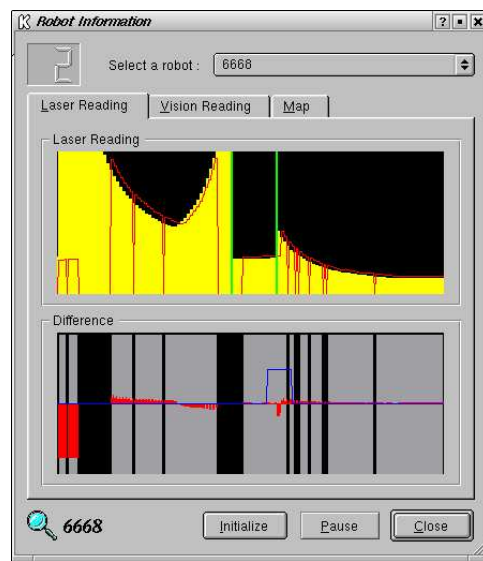
Figure 1 (a) and (b) shows two example actual laser readings. The upper window shows two consecutive laser readings and edges, and the lower window shows the difference between the two readings and a detected moving object.

¹Player [2] is a server and protocol that connects robots, sensors and control programs across the network.

²Stage [5] simulates a population of Player devices, allowing off-line development of control algorithms.



(a) Laser Scan from Environment- Embedded Sensors



(b) Laser Scan from Mobile Robots

Figure 1: Each frame shows a laser scan (upper frame) and a scan difference between consecutive frames (lower frame).

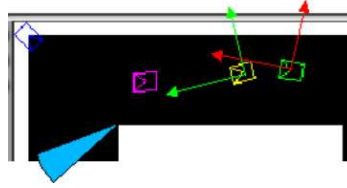


Figure 2: Coordinate transformation

The idea can be implemented without any limitation for stationary, environment-embedded sensors, but several limitations exist for mobile robots carrying laser rangefinders. In the mobile robots' case, simply comparing two consecutive laser readings is not correct because the robot actually moves during the scan process. Figure 2 shows two different positions of a robot when the laser was used. In order to compare these scans correctly, the old reading must be transformed to the new coordinate system. However, during the transformation, there may be several parts of the scan that have no valid data because of rounding errors or two exceptions. The first exception is when the old reading contains the maximum value, which means there is an empty region in front of it. This part of the scan cannot be compared because the reading in the region will be smaller than the maximum value after the transformation even though the value should remain the maximum value. The second exception is a corner occlusion. When there is a corner, the old scan does not have any information behind a corner, but the new scan may have (the fan-shaped region in Figure 2). Therefore, these areas must be ignored. The lower window in Figure 1 (b) shows these ignored regions; only the gray region is compared to calculate a difference. For example, in Figure 1 (a), there is no ignored region because the environment-embedded sensors never move, but there are several ignored regions in Figure 1 (b).

3 Vision-based Tracker

The vision-based tracker uses a camera *and* a laser rangefinder. A color-blob detector, ACTS (ActivMedia Color Tracking System), was used to simplify the vision problem. ACTS is client-server software; its servers process frames of video information to identify and track colored blobs, and share that extracted information with clients. ACTS software can be trained to recognize a variety of colors. Player [2] interfaces with the ACTS server; it forwards information about the size and location of any matching blobs that are found in the camera image.

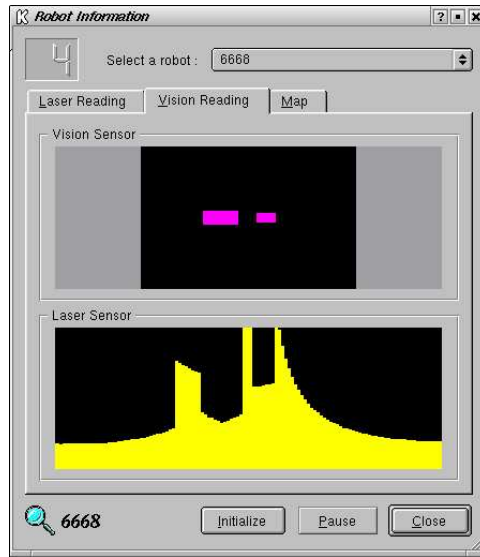
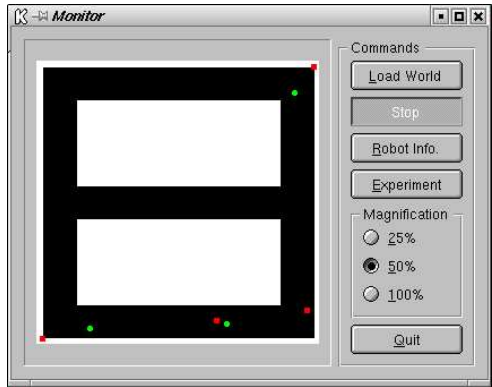


Figure 3: Vision-based Tracker

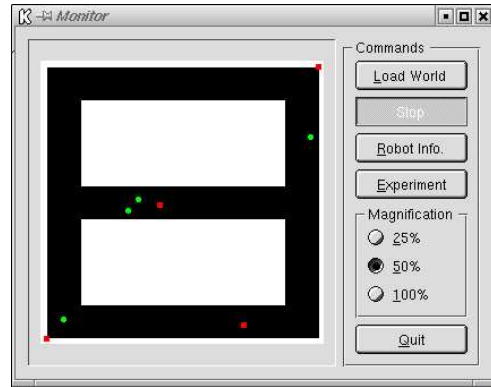
The vision-based tracker finds the existence and direction of colored objects using a camera, and measures the distance to objects using a laser rangefinder. The brief algorithm is:

1. read colored blob information.
2. calculate the direction of each colored blob based on the position of the blob in an image coordinate system.
3. read the distance of the colored blob from a laser scan.
4. report the center positions of colored blobs.

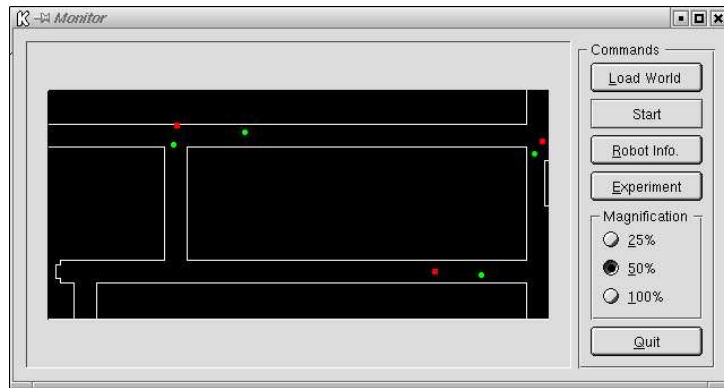
Figure 3 shows corresponding camera and laser readings taken from a single robot. The upper window shows detected colored blobs, and the lower one shows a corresponding laser reading.



(a) Simple Environment 1



(b) Simple Environment 2



(c) Second Floor of the Computer Science Building

Figure 4: Tracking Monitor

4 Experimental Results and Conclusion

The developed trackers were tested with stationary embedded sensors and mobile robots in a simple environment. Figure 4 shows the environment. There are two stationary sensors; one is on the upper-right corner, and another is on the lower-left corner. There are also two mobile robots, and four moving targets. Laser-based trackers were mounted on the stationary sensors, and vision-based trackers were mounted on the mobile robots. In Figure 4, the positions of trackers are marked with red rectangles, and the positions of reported moving targets, which are transformed to a global coordinate system, are marked with green circles.

As shown the above test, the trackers can be used to track moving or bright-colored objects, even though they have limitations (The laser-based tracker can detect only moving objects, and the vision-based tracker can detect only distinctive-colored objects).

References

- [1] Isaac Cohen and Gerard Medioni. Detecting and tracking objects in video surveillance. In *Proceeding of the IEEE Computer Vision and Pattern Recognition 99*, Fort Collins, June 1999.
- [2] Brian Gerkey, Kasper Stoy, and Richard T. Vaughan. Player robot server. Institute for Robotics and Intelligent Systems Technical Report IRIS-00-391, University of Southern California, 2000.
- [3] Stephen S. Intille, James W. Davis, and Aaron F. Bobick. Real-time closed-world tracking. In *Proceeding of the IEEE Conference on Computer Vision and Pattern Recognition*, pages 928–934, June 1997.
- [4] Alan J. Lipton, Hironobu Fujiyoshi, and Raju S. Patil. Moving target classification and tracking from real-time video. In *Proceeding of the IEEE Workshop on Applications of Computer Vision*, 1998.
- [5] Richard T. Vaughan. Stage: A multiple robot simulator. Institute for Robotics and Intelligent Systems Technical Report IRIS-00-393, University of Southern California, 2000.