

Long-term Robot-Mediated Interventions for Children with Autism: A Case Study

David Becerra

University of Southern California
dbecerra@usc.edu

Maja Matarić

University of Southern California
mataric@usc.edu

ABSTRACT

Autism spectrum disorders (ASD) are lifelong conditions that affect millions of people worldwide. Recently, researchers have explored the promising utility of socially assistive robotics (SAR) as a therapy tool to help people, particularly children, with autism. However, research has rarely considered the dynamics of robot-mediated autism interventions in long-term studies. In this paper, we present a long-term in-home intervention of a socially assistive robot for children with autism. We provide an overview of the robotic system as well as the study design of the intervention. Finally, we present a case study of a child with ASD and discuss our preliminary results.

KEYWORDS

Human-robot interaction, socially assistive robotics, autism spectrum disorders, long-term, in-home

1 INTRODUCTION

In the United States alone, more than 3 million people live with autism spectrum disorders (ASD), a range of developmental conditions often characterized by atypical social behaviors [1]. In an effort to support and expand the often costly resources available for individuals with ASD, a growing area of research is exploring the potential for socially assistive robotics (SAR) as a therapeutic tool for those diagnosed with autism [5].

Socially assistive robotics is a nascent field of computer science aimed at understanding how robots can help people via social rather than physical interactions [3]. In autism research, SAR has already shown promise in eliciting novel behaviors such as turn-taking and joint-attention [2, 4]. However, in order to fully understand the impact and usefulness of SAR for people with autism, longer-term interventions must be conducted.

In this paper, we present a long-term robot-mediated intervention exploring how socially assistive robots can promote the cognitive and academic development of children with autism. First, we discuss the system and study design of the in-home intervention. Next, we present a case study of the intervention with a single child with ASD. Lastly, we present preliminary results from the case study and discuss future research plans.

2 APPROACH

To investigate how SAR can be leveraged to assist children with ASD during a long-term intervention, we developed an autonomous robotic system that can be safely deployed into homes over extended periods of time. Any in-home intervention should be mindful of the privacy and comfort of its patients. To that end, our system is designed to be minimally intrusive and maximally accessible.

2.1 System Design

At the center of the system is the SPRITE robot Kiwi, a Stewart-Platform designed for research in socially assistive robotics [6]. Children interact with Kiwi by playing 10 different educational games on a touch-screen monitor. The games, designed around a space theme, explore numeracy concepts such as counting, ordering/sequencing, and pattern matching. Each game has five difficulty levels, with higher difficulties requiring more advanced skills such as simple mathematics. All of the games were developed with educational specialists to ensure the content was appropriate for our target age range, children 4-6 years old.

While playing the games, Kiwi behaves autonomously. It delivers instructions for the child to complete each exercise, while also providing feedback and support whenever the child needs help or makes a mistake. All of Kiwi's dialogue and gestures are triggered automatically by events from the game.

As stated previously, the system is designed to be accessible, particularly for families with minimal technical experience. To begin interacting with the system, the family must physically turn on the computer. Once on, all the software including the games and all data recording is automatically activated. Similarly, the family must flip a physical switch to turn on the robot. No further steps are required from the family to start the system.

2.2 Study Design

The socially assistive robot system is part of an ongoing within-subjects user study involving typically developing children and children with autism. In the study, each participating family has the robot in their home for 30 days. During the duration of the study, participants are asked to interact with the system in 20 separate sessions, at most one session on any given day. A session lasts approximately 10-25 minutes; however, we allow participants to play as long or as short as desired.

During a single session, the child plays the ten games with Kiwi while being audio- and video-recorded. Video recordings capture a front view of the child as well as anyone else directly behind the child. The audio and video recording automatically stop whenever the family turns off the system.

After the child finishes the games, the parent completes a short interaction questionnaire that contains the following mix of 5-point Likert scales and open-ended questions: (1) How did your child feel about interacting with the robot today? (2) To what degree did you have to motivate your child to interact with the robot and games today? (3) What did you use to motivate your child today? (4) How independently did your child interact with the robot and games today? (5) How do you think your child performed on the activities today? (6) Which of the following best describe your child's mood or feelings today? (7) Did anything unusual take place

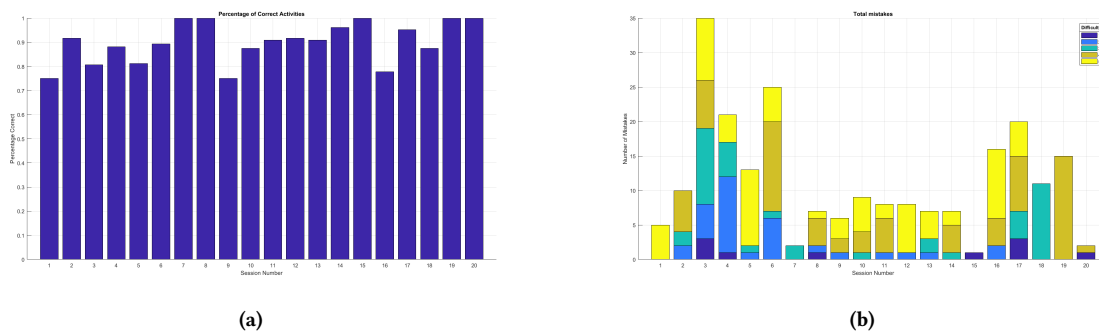


Figure 1: (a) Child participant’s performance across all 20 sessions. (b) Total mistakes per difficulty level the child made across all 20 sessions.

in your child’s day today? (8) In a few words please describe how your child is developing in terms of learning so far? (9) In a few words, please describe how your child is interacting and engaging with the robot so far.

Additionally, every week the parent participates in an informal semi-structured interview as an opportunity to provide a brief status update as well as to communicate any technical issues that may have arisen. At the end of the 30 days, the system is collected from the participant’s home and an informal post-study interview is conducted.

3 PRELIMINARY RESULTS

Rigorously analyzing the results of this ongoing study is premature and beyond the scope of this paper. However, we present preliminary results from a single deployment as a case study of the capabilities of SAR for long-term interventions for children with ASD. At the time of this publication, a total of two deployments have been conducted. We choose to focus our attention on the second deployment as several technical improvements were made following feedback from the initial deployment.

The particular case study discussed in this paper involved a 7-year old male child with ASD. The child had the robot in his home for a total of 37 days, during which time he interacted with the robot 20 times. Each session lasted 10.8 minutes on average ($SD = 7.6$ minutes). The initial analysis of the child’s performance on the games has not yet shown any significant results. Figure 1 shows that the child consistently answered 70% or more games correctly ($mean = 89.9\%$, $SD = 8.4\%$); there appears to be no significant change of performance overtime. In addition, we note that the child makes significantly more mistakes on the higher difficulty problems, with 64% of mistakes happening at difficulties 4 and 5.

We observed encouraging behavioral changes in the child’s interaction with the robot system over time. On the day researchers brought the setup to the home, the child was hesitant to interact with the robot or play the games. However, as the study progressed, we observed that the child was not only excited to play with Kiwi, but he actively told his peers about the games and invited relatives to play alongside him. Similar results were noted in the semi-structured weekly interviews. The parent expressed that the child was initially scared of Kiwi. However, as the parent gradually exposed the child to the robot, the child grew fond of Kiwi and

wanted to share it with his friends, therapist, and social worker. These observational results suggest the potential for long-term interventions to increase human-robot attachment.

Furthermore, initial analysis of the parent survey indicates an increase in the child’s autonomy while playing the games. During the first few sessions, the parent reported that the child required a moderate amount of assistance while playing the games. However, during the final sessions of the study, the parent began reporting that the child was able to complete the games independently, requiring little to no assistance. These initial reports indicate the possibility for SAR interventions to help a learner with autism gain academic autonomy and independence.

4 FUTURE WORK

We plan to continue to analyze the data collected from the described case study. We are annotating and investigating the video recordings to explore how features such as eye gaze and speech can illuminate how attentive and engaged the child was throughout each interaction. As this is part of a larger study, we are continuing to deploy the system into additional homes, and making systematic improvements along the way. Once the study is completed, and data analyzed, we will publish the results as a longitudinal study of SAR’s promising applications to autism therapy.

5 ACKNOWLEDGEMENTS

This research is supported by the NSF Expeditions in Computing for "Socially Assistive Robotics" (IIS-1139148).

REFERENCES

- [1] Ariane VS Buescher, Zuleyha Cidav, Martin Knapp, and David S Mandell. 2014. Costs of autism spectrum disorders in the United Kingdom and the United States. *JAMA pediatrics* 168, 8 (2014), 721–728.
- [2] Joshua J Diehl, Lauren M Schmitt, Michael Villano, and Charles R Crowell. 2012. The clinical use of robots for individuals with autism spectrum disorders: A critical review. *Research in autism spectrum disorders* 6, 1 (2012), 249–262.
- [3] David Feil-Seifer and Maja J Mataric. 2005. Defining socially assistive robotics. In *Rehabilitation Robotics, 2005. ICORR 2005. 9th International Conference on*. IEEE, 465–468.
- [4] Daniel J Ricks and Mark B Colton. 2010. Trends and considerations in robot-assisted autism therapy. In *Robotics and Automation (ICRA), 2010 IEEE International Conference on*. IEEE, 4354–4359.
- [5] Brian Scassellati, Henny Admoni, and Maja Mataric. 2012. Robots for use in autism research. *Annual review of biomedical engineering* 14 (2012), 275–294.
- [6] Elaine Short, Dale Short, Yifeng Fu, and Maja J Mataric. 2017. Sprite: Stewart platform robot for interactive tabletop engagement. *Department of Computer Science, University of Southern California, Tech Report* (2017).