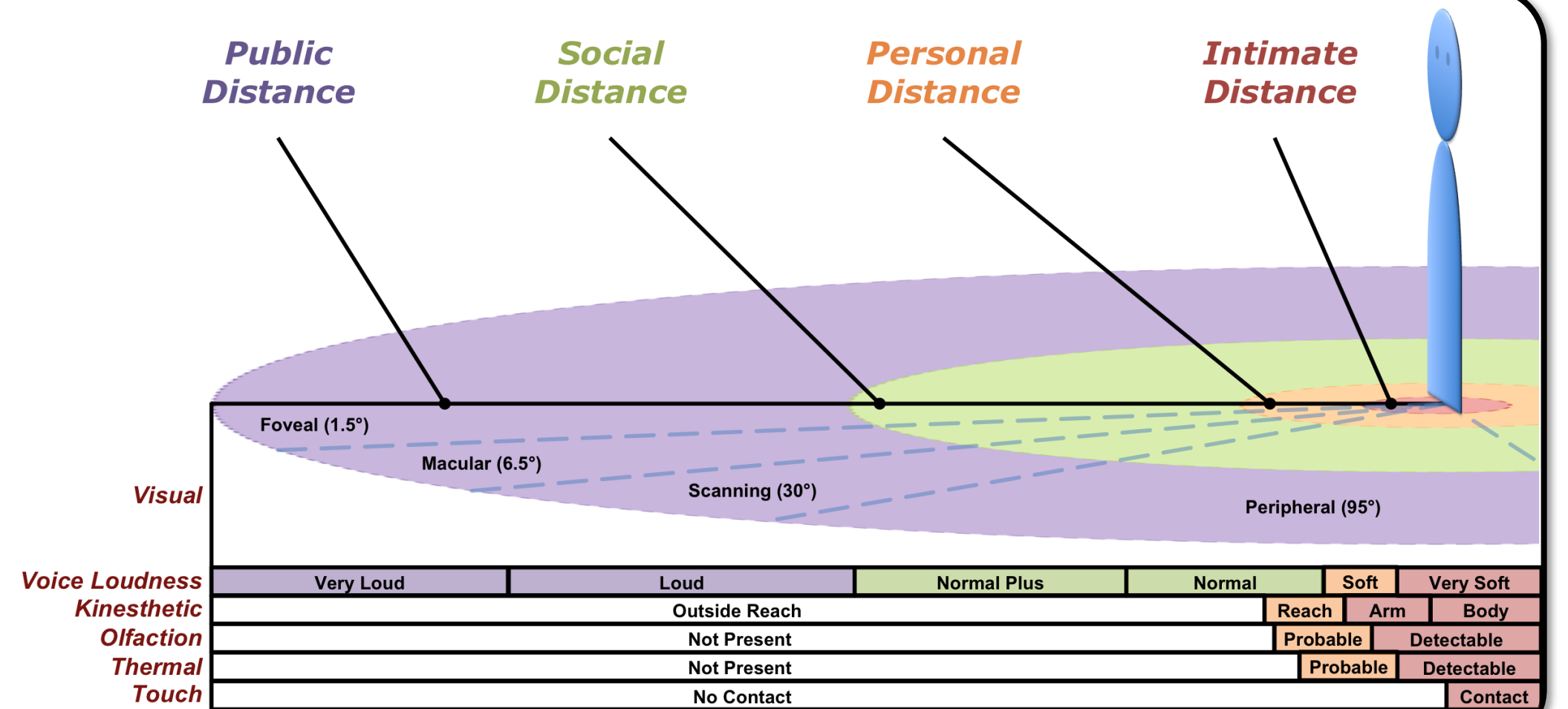


Overview

- **Proxemics** is the study of the interpretation, manipulation, and dynamics of spatial behavior in co-present social encounters.
- Edward T. Hall [1] coined this term, and proposed that **psychophysical** factors shaped by culture defined zones of intimate, personal, social, and public space.
- These proxemic zones are characterized by the visual, auditory, olfactory, thermal, touch, and kinesthetic experiences of each interacting participant [2].

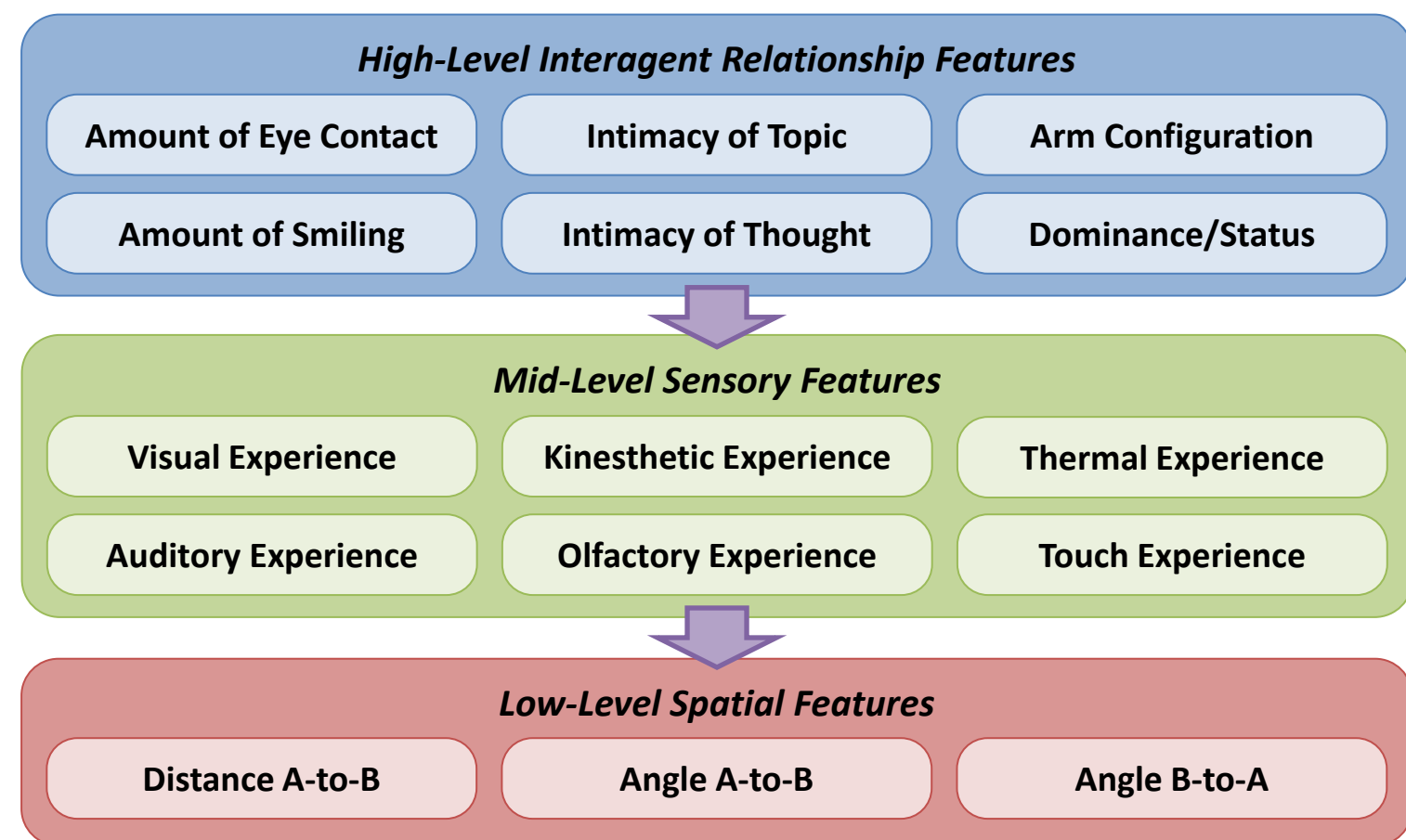
Objective

- To develop functional and socially appropriate probabilistic models of proxemic behavior that can be implemented as controllers for sociable robots.



Socially Situated Approach

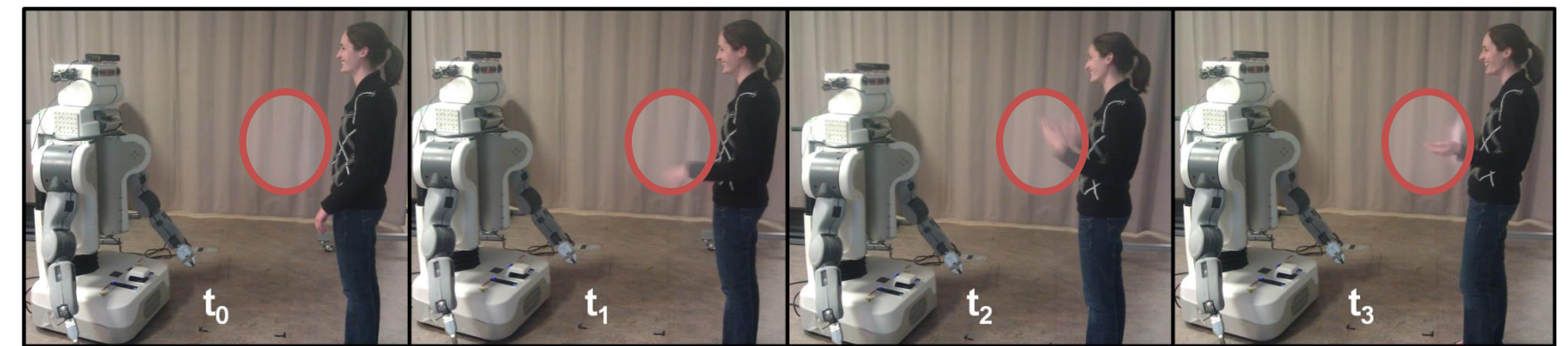
- Model proxemic behavior based on how an agent will likely experience social stimuli (e.g., speech and gesture) in a co-present interaction [3].
- Propose a sort of *mid-level* probabilistic framework [3], between low-level spatial features [4, 5] and high-level interagent relationship features [6, 7].



Problem Formalization

- Suppose we have two sociable agents, *A* and *B*. At any time and from any location in the room, *A* should be able to estimate and select appropriate values for:

- an **interagent pose**, POS_{AB} — where it should be located with respect to *B*;
- a **speech output level**, SOL_{AB} — how loudly it should speak for *B* to hear;
- a **speech input level**, SIL_{AB} — how loudly it will perceive speech produced by *B*;
- a **gesture output level**, GOL_{AB} — where its gestures should occupy for *B* to see;
- a **gesture input level**, GIL_{AB} — where it will perceive gestures produced by *B*.



- In addition, *A* should be able to estimate:

- parameter values for *B* (i.e., POS_{BA} , SOL_{BA} , SIL_{BA} , GOL_{BA} , and GIL_{BA});
- desirability of parameters in the presence of sensory **interference** (*INT*);
- parameter values even if neither agent has spoken or gestured yet.

Data Collection

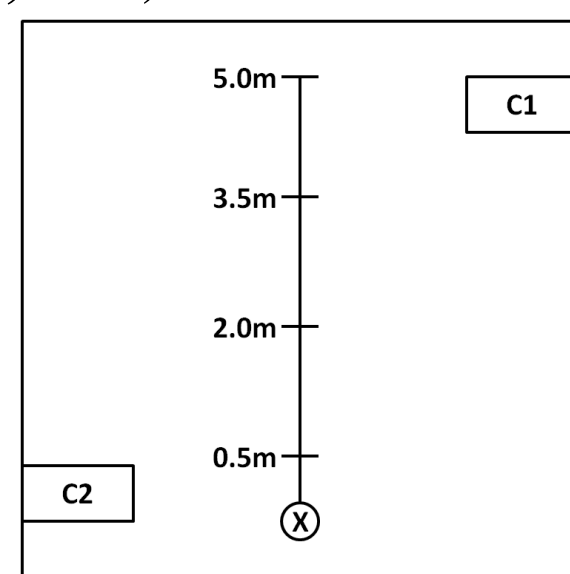
- We need to collect data to model how:

M1: interference affects **interagent pose**: $p(POS_{AB} | INT)$

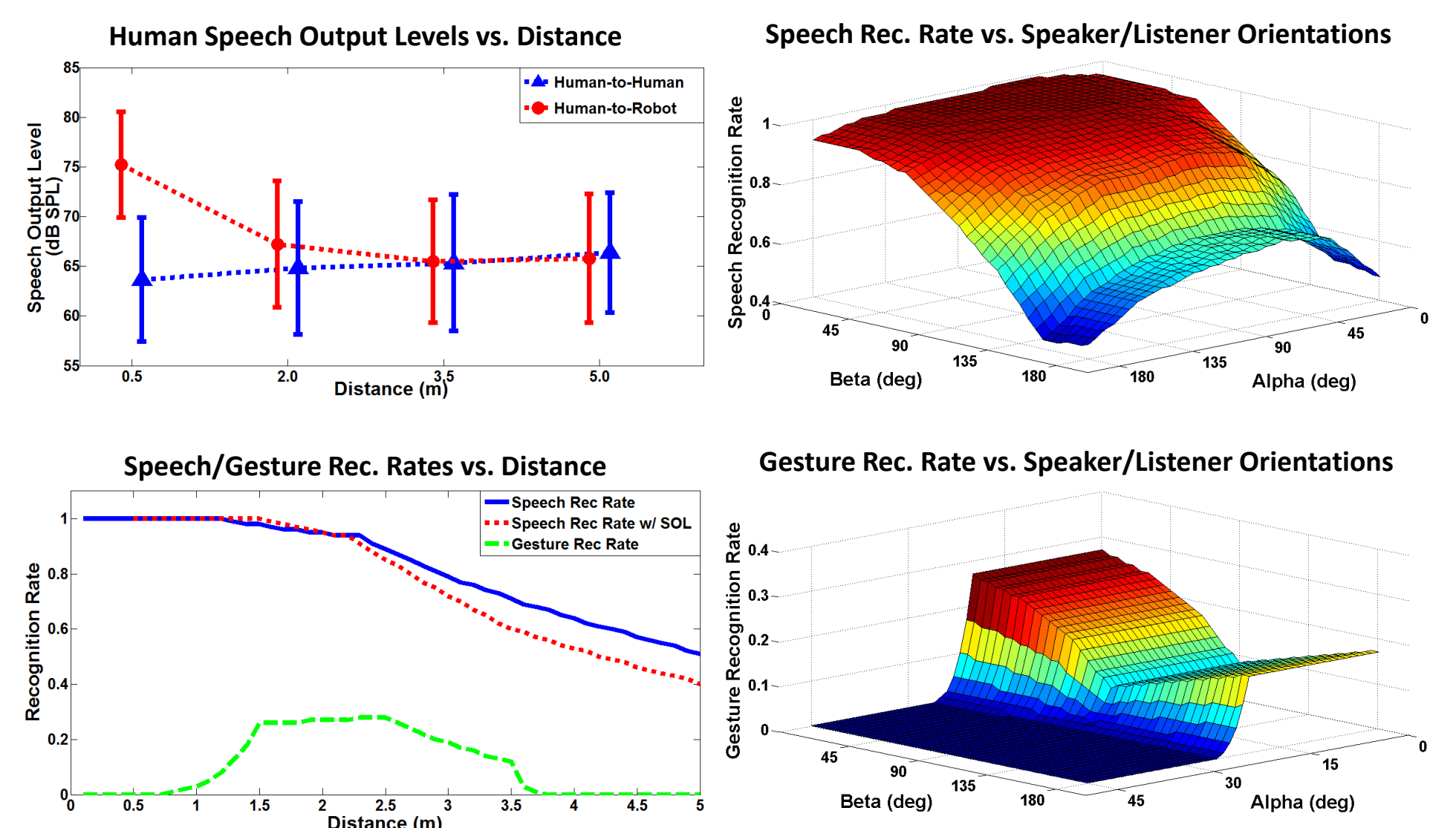
M2: interference and **interagent pose** affect **speech** and **gesture production** (output):
 $p(SOL_{AB}, GOL_{AB} | POS_{AB}, INT)$

M3: interference and **interagent pose** affect **speech** and **gesture perception** (input):
 $p(SIL_{AB}, GIL_{AB} | POS_{AB}, INT)$

- **Design:** 2 (agent) x 5 (distance)
- **Agent:** human-human and human-robot
- **Distance:** choice and set (x4)
 - **Choice:** stand at “natural” location [M1]
 - **Set (x4):** stand at specified location [M2 & M3]
- **Procedure:** repeat 6 times — choice (x2) and set (x4)
 - Each participant watches a short cartoon at **C***.
 - One agent moves to and stays at floor mark **X**.
 - Other agent approaches to some distance (**choice** or **set**) to discuss the cartoons.

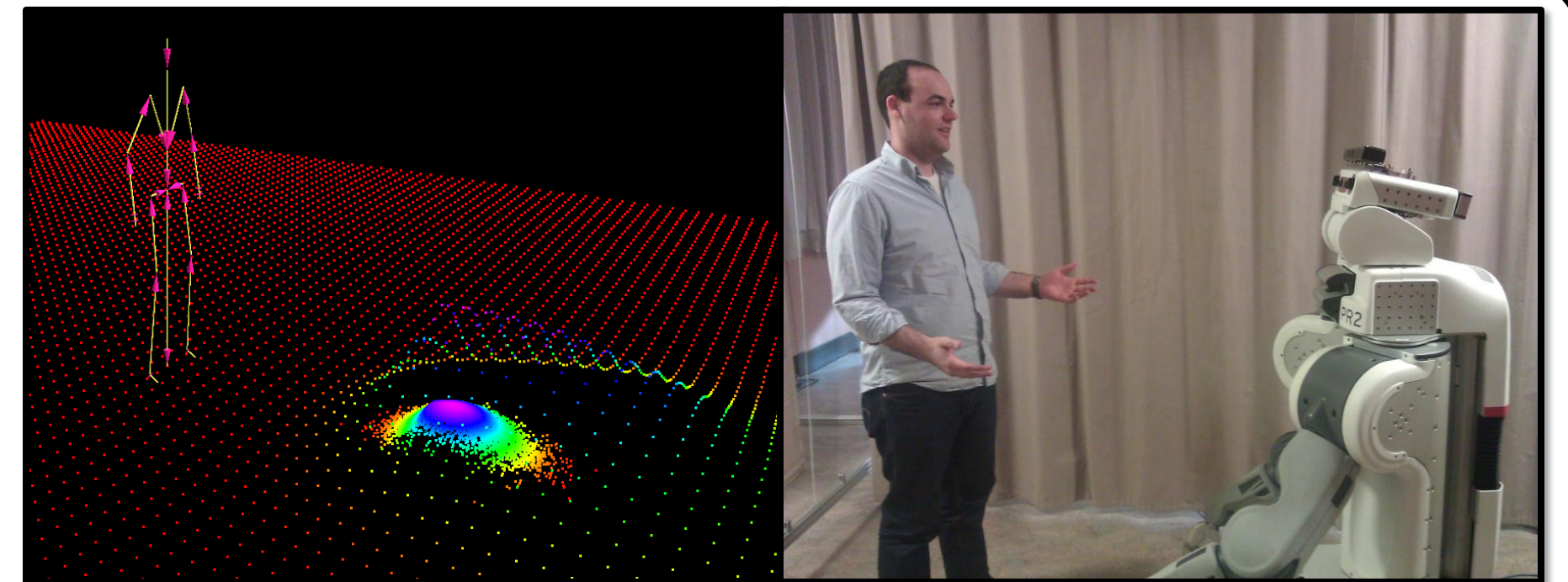


Selected Models and Results



Summary and Future Work

- This approach captures the functional aspects of spatial interaction by considering the sensory experience of interacting agents, and sits as a mid-level representation [3] between low-level spatial features [4, 5] and high-level interagent relationship features [6, 7].
- In future work, we will treat noise as a fundamental input into the system by collecting data to model interaction parameters conditioned on auditory and visual sensory **interference** (*INT*) — this will allow the robot to autonomously adjust to dynamic, unstructured environments!
- All code will be part of the *Social Behavior Library* (*SBL*) in the *USC Interaction Lab ROS Packages Repository* (<http://code.google.com/p/usc-interaction-software/ros>).



Acknowledgments

This work is supported in part by an NSF Graduate Research Fellowship, as well as ONR MURI N00014-09-1-1031 and NSF IIS-1208500, IIS-1117279, and CNS-0709296 grants, and the Willow Garage PR2 Beta Program. We thank Amin Atrash for insights on probabilistic modeling techniques and Edward Kaszubski for assistance in implementing the Social Behavior Library (SBL).

Selected References

- [1] Hall, E. T. 1966. *The Hidden Dimension*. Doubleday, Garden City, NY.
- [2] Hall, E.T. 1963. A system for notation of proxemic behavior. *American Anthropologist*, 65, 1003-1026.
- [3] Mead, R. and Mataric, M. J. 2012. A probabilistic framework for autonomous proxemic control in situated and mobile human-robot interaction. *Proc. of the 7th Int'l. Conf. on Human-Robot Interaction (HRI 2012)*, Boston, Massachusetts, 193-194.
- [4] Shi, C., Shimada, M., Kanda, T., Ishiguro, H., and Hagita, N. 2011. Spatial formation model for initiating conversation. *Proc. of Robotics: Science and Systems (RSS 2011)*. Los Angeles, CA.
- [5] Kuzuoka, H., Suzuki, Y., Yamashita, J., and Yamazaki, K. 2010. Reconfiguring spatial formation arrangement by robot body orientation. *Proc. of the 5th ACM/IEEE Int'l. Conf. on Human-Robot Interaction (HRI 2010)*, Osaka, Japan, 285-292.
- [6] Mumm, J. and Mutlu, B. 2011. Human-robot proxemics: physical and psychological distancing in human-robot interaction. *Proc. of the 6th Int'l. Conf. on Human-Robot Interaction (HRI 2011)*, Lausanne, Switzerland, 331-338.
- [7] Takayama, L. and Pantofaru, C. 2009. Influences on proxemic behaviors in human-robot interaction. *IEEE/RSJ Int'l. Conf. on Intelligent Robots and Systems (IROS 2009)*, St. Louis, MO, 5495-5502.