

Improving Robot Navigation Through Self – Supervised Online Learning

Authors: Boris Sofman, Ellie Lin, J. Andrew Bagnell, Nicolas Vandapel, and Anthony Stentz

Journal of Field Robotics, December 2006

Presented By: Aninoy Mahapatra

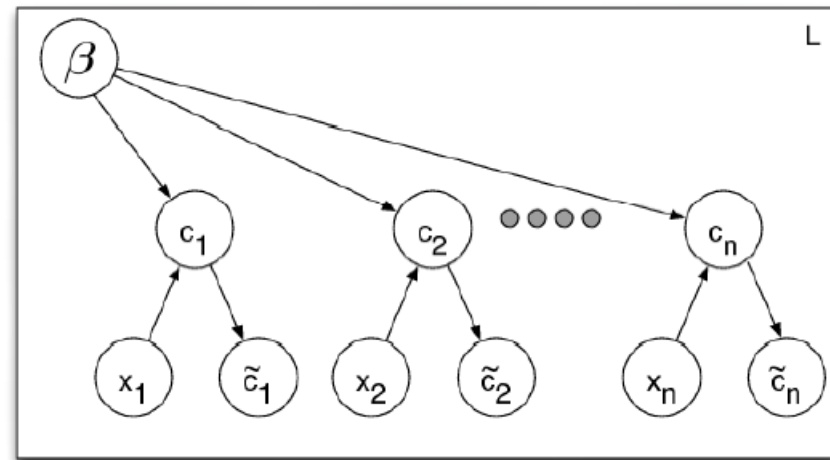
Motivation

- Reliable and effective automated interpretation of imagery from diverse terrain, environmental conditions, and sensor maintainability (manual labor), energy consumption, high operation costs and sensor varieties proves challenging.
- Problem of learning and inferring between two heterogeneous data sources that vary in density, accuracy and scope of influence.
- Proposed solution: simple, linear probabilistic model for which inference results in a self-supervised online learning algorithm that fuses the estimates from the two data sources.

Formalization

- Scoped Learning
 - General features (global): generalize well to new domains
 - Locale specific features (local): generalize poorly
- Dense, vehicle based LADAR perception → General features
- Overhead imagery and elevation data → Locale specific features

- c , variable to predict
- \tilde{c} , estimate of c from general features
- x_i , locale specific features
- β , relationship between x and c



Formalization (contd.)

- c is modelled as a function over k locale specific features.

$$E(c|\beta, x) = \beta^T x$$

- Estimates from general features have Gaussian noise

$$\tilde{c} \sim \text{Normal}(c, \sigma_g^2)$$

- Inference:

$$- p(c_j|\tilde{c}_i, x_i, D) = \int d\beta p(c_j|\beta, \tilde{c}_i, x_i)p(\beta|\tilde{c}_i, x_i, D)$$

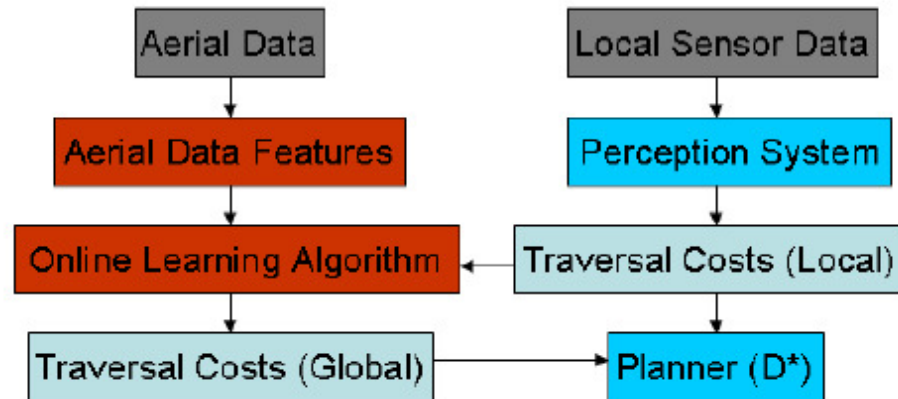
$$- p(\beta|\tilde{c}_i, x_i, D) \propto p(\beta|D) \int dc_i p(\tilde{c}_i|c_i)p(c_i|\beta, x_i)$$

Why Bayesian Learning Approach?

- Confidence rated prediction
 - Probability of each 'c' is a metric of confidence
- Learning of Hyper-prior and feature selection
 - Based on data from multiple locales
 - Sparse Hyper-parameter re-estimation procedure
- Reversible learning
 - Remove effects of training on previous data when better estimates are available

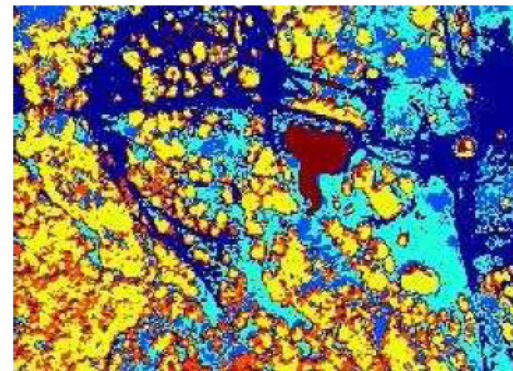
Experiments

Improving autonomous navigation capabilities of UGVs



Experiments (contd.)

- Traversal cost prediction
 - Features from ladar sensors used to compute terrain traversal costs
 - Online learning algorithm predicts traversal costs based on overhead imagery
- Features
 - HSV for color imagery
 - Max response to set of Gabor filters for capturing texture
 - Mean & SD in intensity within varying size windows, for B &W imagery
 - Elevation based features
 - Gaussian Mixture models to cluster input feature set and identify patterns relevant to output regression



Results



STATISTICS FOR COURSE TRAVERSALS WITH AND WITHOUT THE
ONLINE LEARNING ALGORITHM

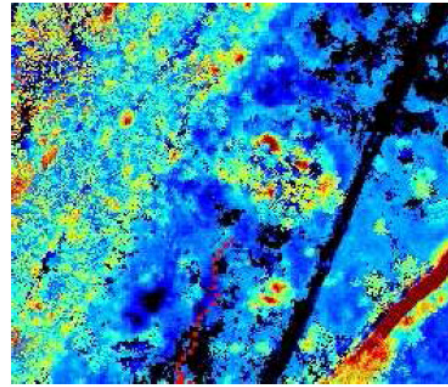
	Without Algorithm	With Algorithm
Total Traversal Time (sec)	1369.86	1000.82
Total Distance Traveled (m)	1815.71	1681.73
Average Speed (m/s)	1.33	1.68
Number of Interventions	1	0

- Set of courses (vegetation, dirt, hills, ditches, etc.)
- 40 cm resolution of overhead imagery, elevation data
- 26.94% faster, 7.38 shorter path

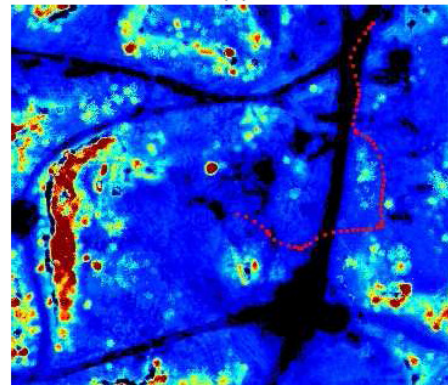
Results (contd.)



(a)



(b)



Results (contd.)

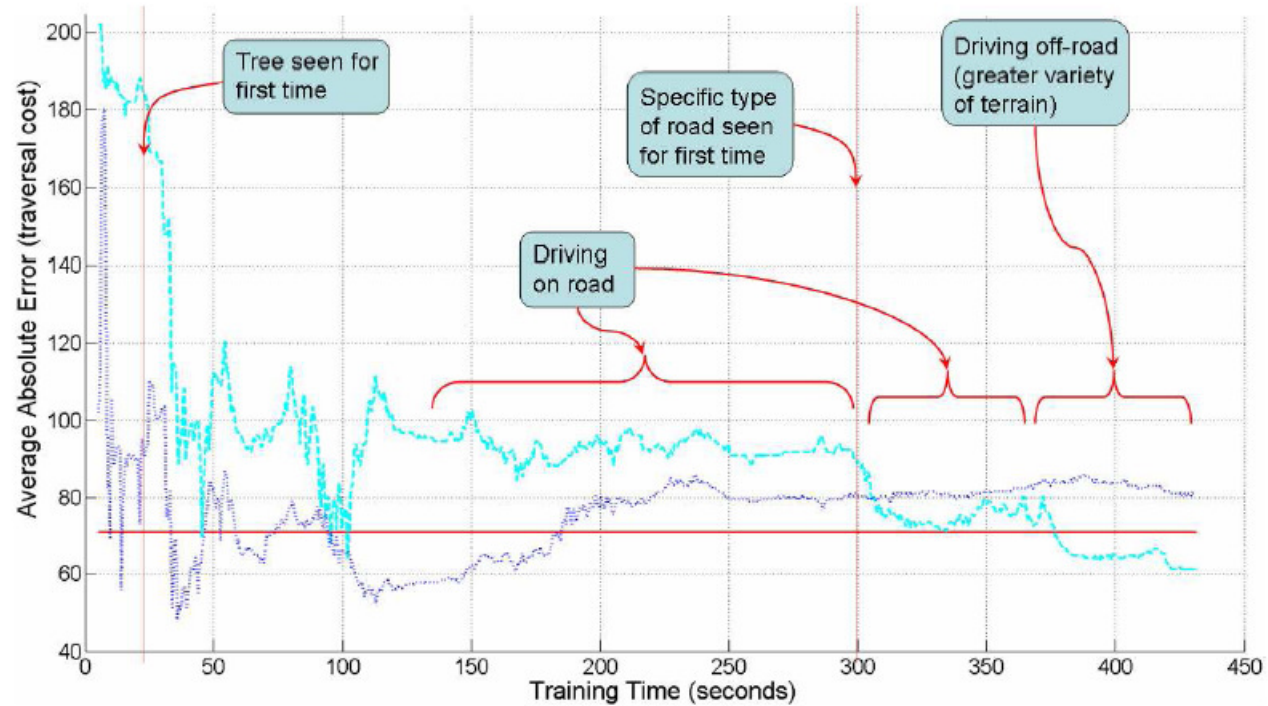
TYPES OF OVERHEAD DATA USED BY ONLINE LEARNING (OLL) AND HAND-TRAINED ALGORITHMS USED TO PRODUCE PRIOR COST MAPS

Algorithm	Data Used	Resolution
OLL (color)	Color imagery	0.35 <i>m</i>
OLL (B & W)	Terraserver B & W imagery	1.0 <i>m</i>
Human-Supervised	Color imagery Elevation	0.35 <i>m</i> < 0.2 <i>m</i>



Source: Improving Robot Navigation Through Self – Supervised Online Learning

Results (contd.)



Results (contd.)

