

# Information-Theoretic Control of Sensor Platforms

Ch. 4 of Thesis by Ben Grocholsky

Presentation by Max Pflueger  
March 9, 2011

# Optimal Control for Sensing with 1 agent

- 1 robot in an environment with a noisy bearings-only sensor
  - robot moves with constant velocity
  - control variable is rate of change in robot heading
- Objective: minimize determinant of feature error covariance at a fixed terminal time  $t_f$ 
  - equivalent to maximizing entropic information
  - will be reformulated as maximizing determinant of inverse covariance matrix
- Implemented optimal control (appendix A) based on this problem formulation

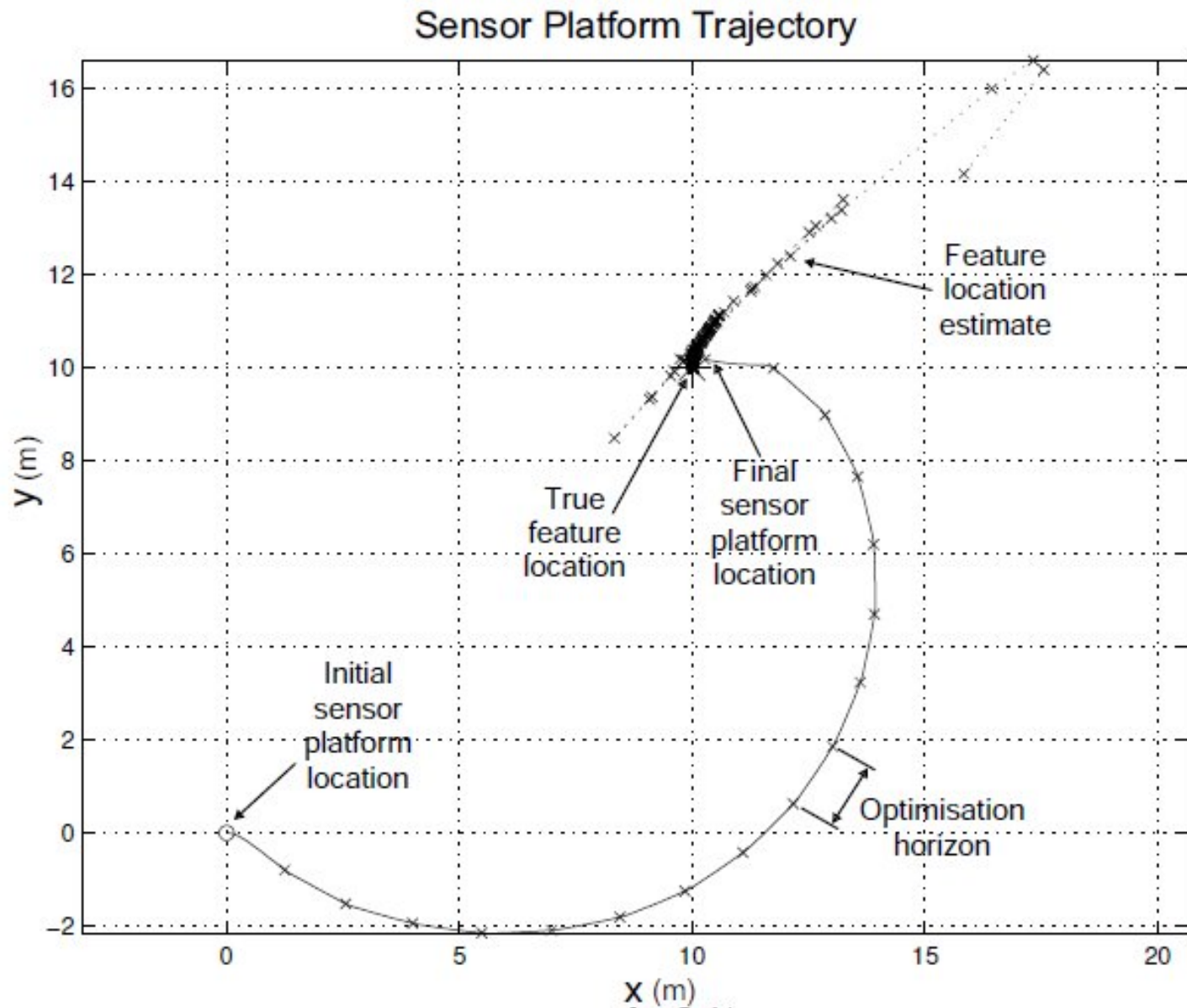
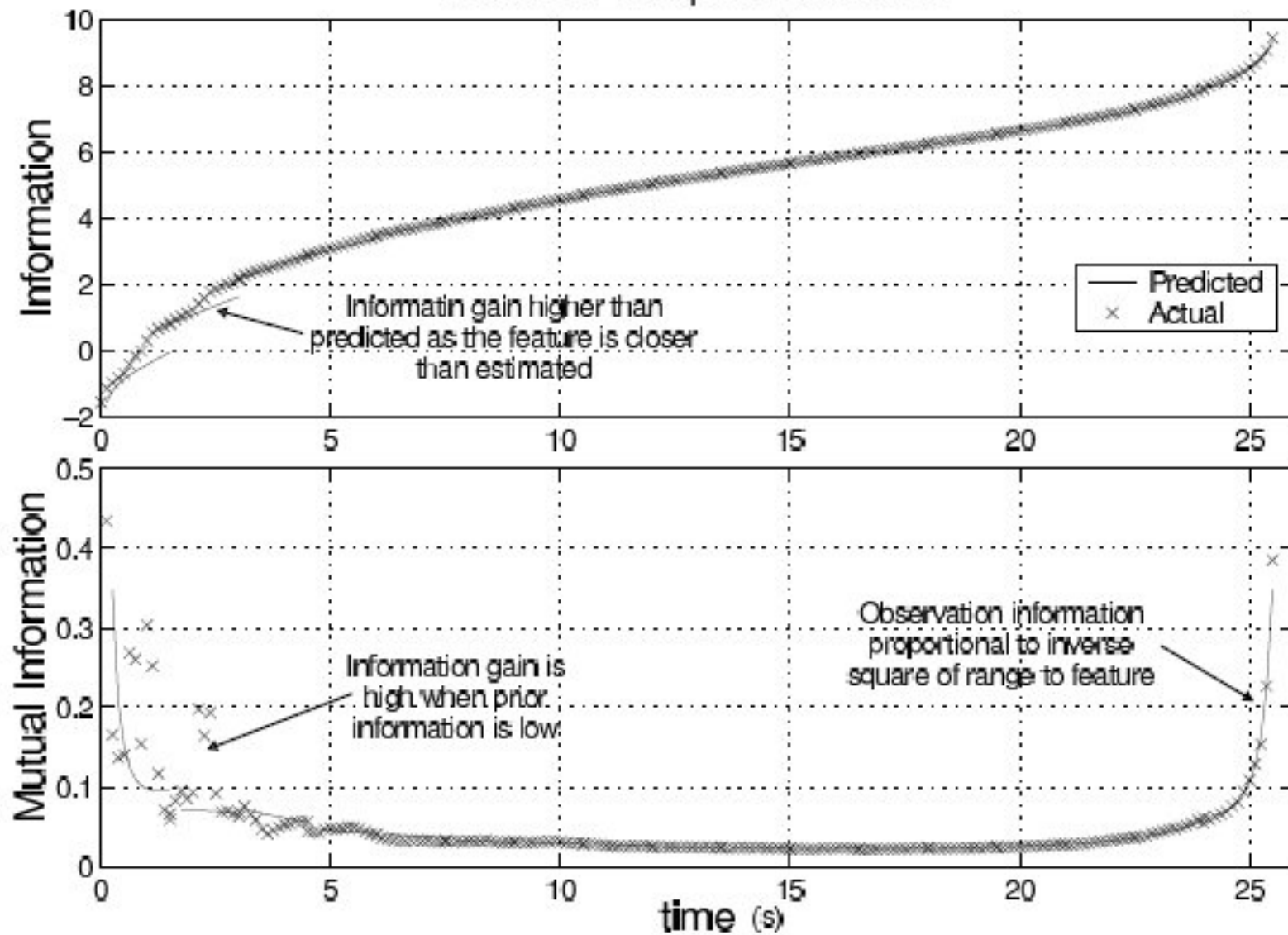
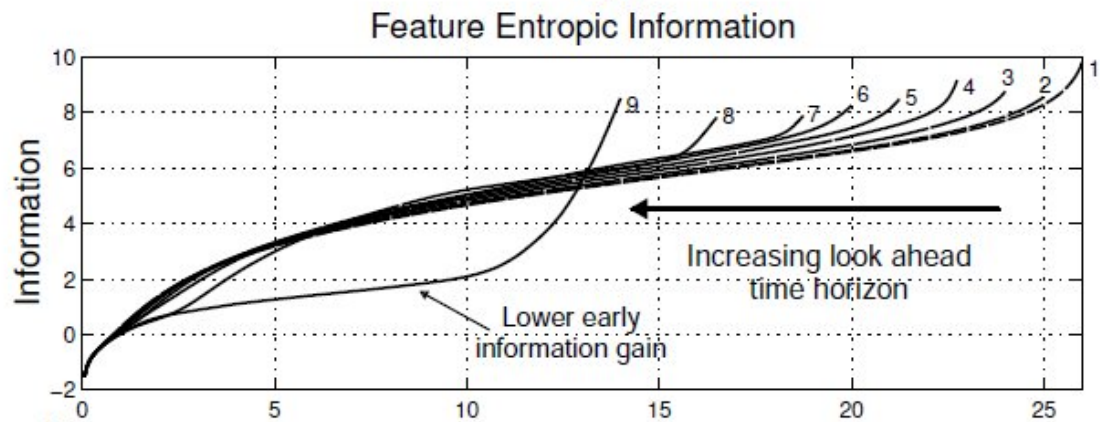
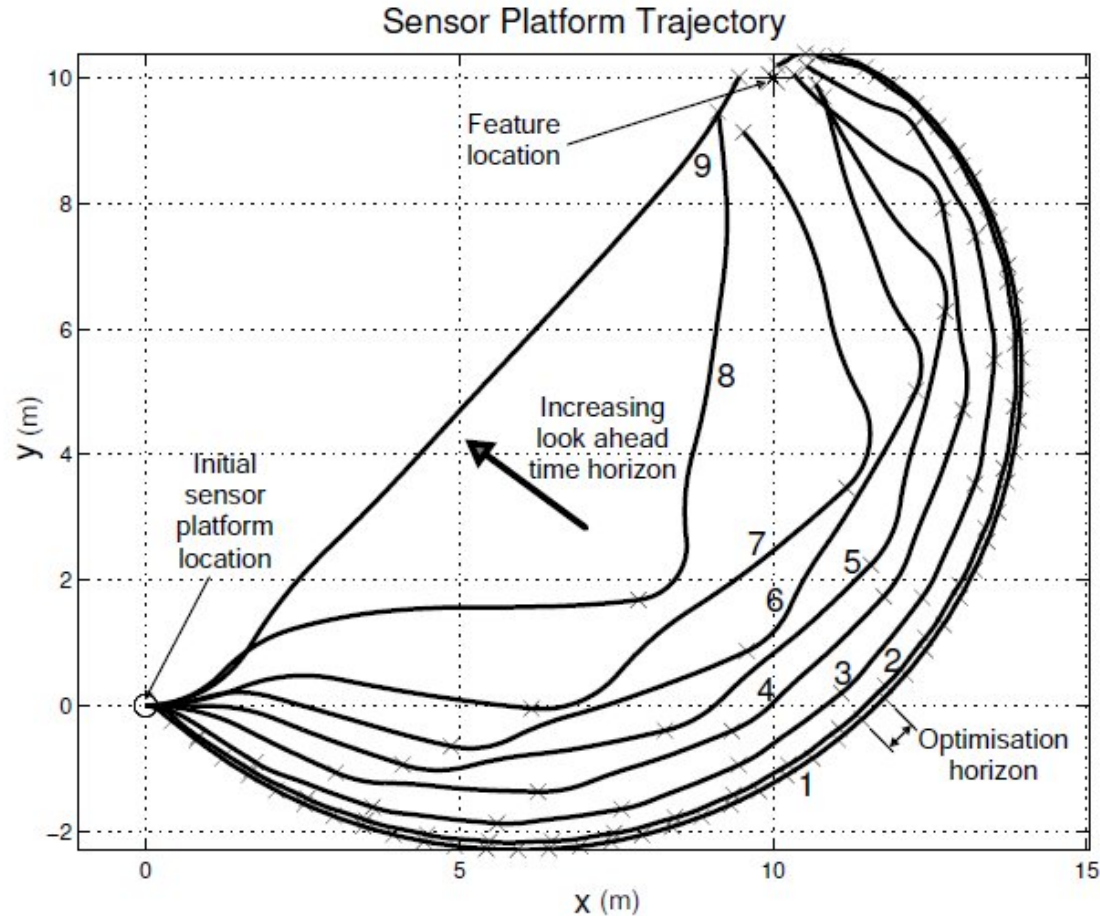


Figure 4.7: Trajectories of the sensor platform and location estimate along with the information evolution for the bearings-only localisation example. Bearings observations are made at  $16Hz$ . The open-loop control is calculated at  $4Hz$  over a 1.5 second time horizon. The information gain associated with observations is initially high when there is large uncertainty and at the end of the sensing plan when the range to the feature is small increasing observation information.

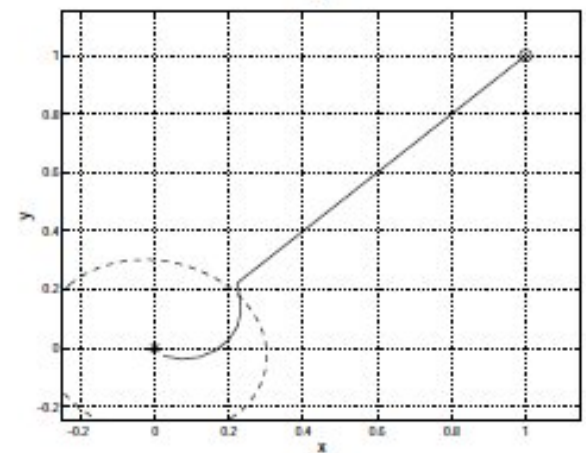
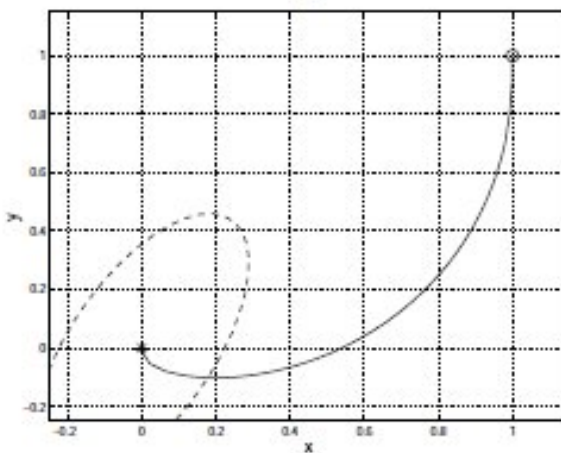
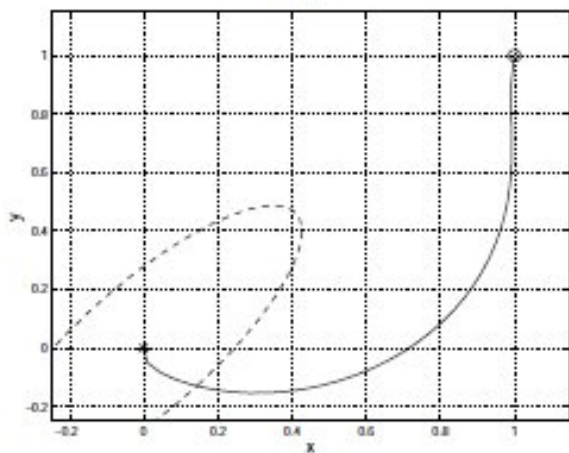
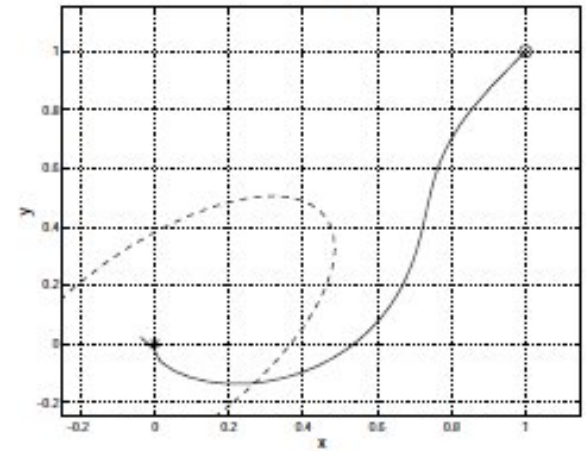
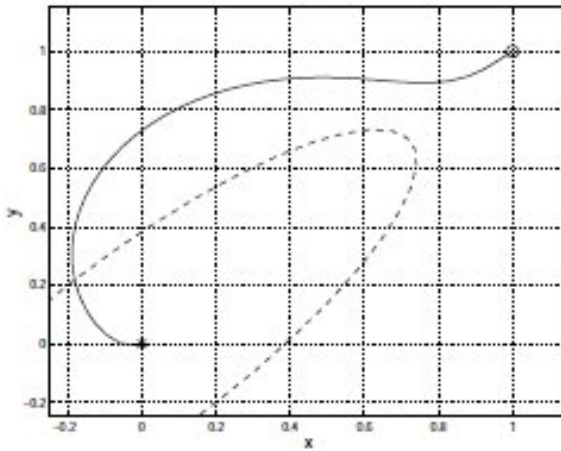
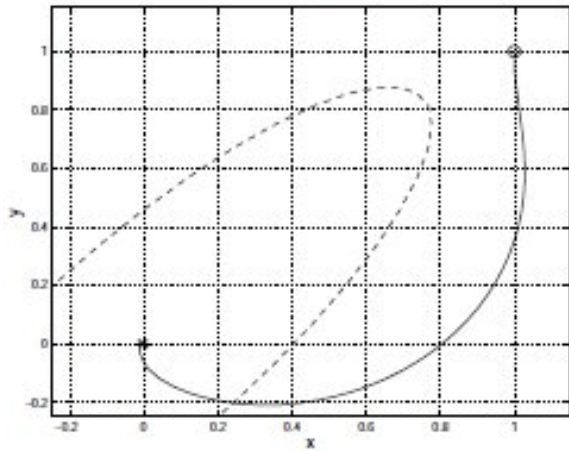
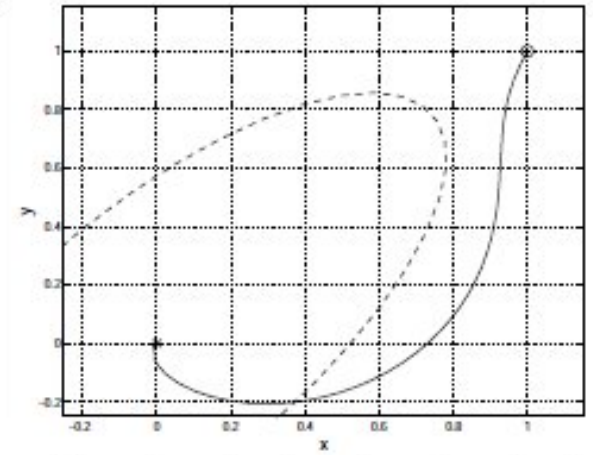
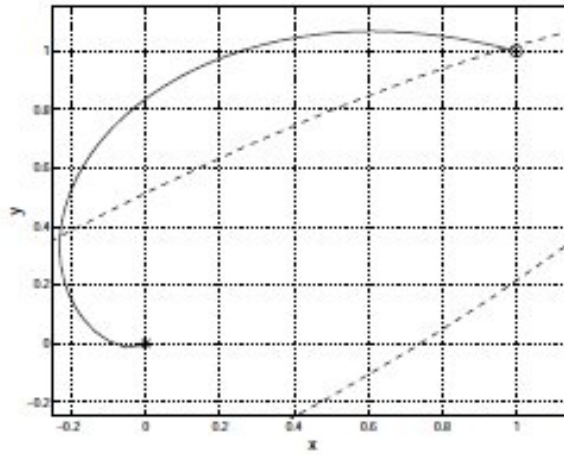
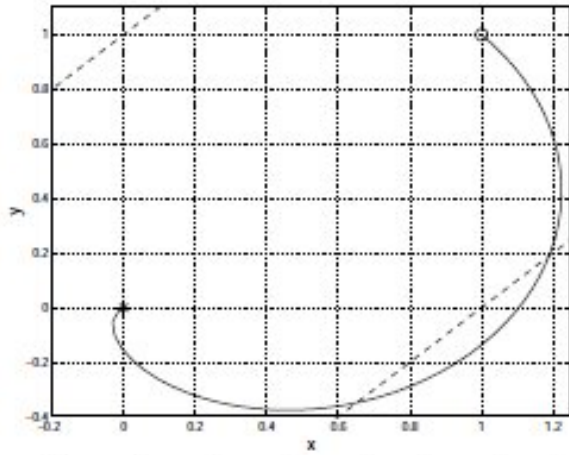
## Feature Entropic Information



# Effect of time horizon



# Effect of prior information



# Extending to Multi-Vehicle, Multi-Sensor

- Describe relationship between global utility ( $J$ ) and local or partial utility
  - local utility is what can be observed by an agent alone
  - additive global structure:

$$J(\mathbf{u}_1, \dots, \mathbf{u}_n) = \sum_{i=1}^n \tilde{J}_i(\mathbf{u}_i) + J_c(\mathbf{u}_1, \dots, \mathbf{u}_n)$$

- for contrast, multiplicative structure:

$$J(\mathbf{u}_1, \dots, \mathbf{u}_n) = J_c(\mathbf{u}_1, \dots, \mathbf{u}_n) \prod_{i=1}^n \tilde{J}_i(\mathbf{u}_i).$$

- $J_c$  describes the coupled utility between agents
  - properties of this coupling determine how much cooperation is necessary

# Optimizing Global Utility

- 3 cases

- no coupling, cooperation not necessary

$$\frac{\partial J_c(\mathbf{u}_1, \dots, \mathbf{u}_n)}{\partial \mathbf{u}_i} = \frac{\partial J_c(\mathbf{u}_1, \dots, \mathbf{u}_n)}{\partial \mathbf{u}_j} = 0 \quad \forall \{\mathbf{u}_i, \mathbf{u}_j\} \in \mathbf{U} \subset \mathbb{R}$$

- coupling, some combinations of partial stationary points are also global stationary points

$$\frac{\partial J_c(\mathbf{u}_1, \dots, \mathbf{u}_n)}{\partial \mathbf{u}_i} \Big|_{\mathbf{u}_i = \mathbf{u}_i^*} = 0, \text{ for any } \mathbf{u}_i^* \in \left\{ \mathbf{u}_i : \frac{\partial \tilde{J}_i(\mathbf{u}_i)}{\partial \mathbf{u}_i} = 0 \right\} \text{ for } i = 1, \dots, n$$

- global opt = local opt
- global opt = local stationary
- global opt != local stationary

- coupling, global optimum is not at partial stationary points; full cooperation is required

$$\frac{\partial J_c(\mathbf{u}_1, \dots, \mathbf{u}_n)}{\partial \mathbf{u}_i} \Big|_{\mathbf{u}_i = \mathbf{u}_i^*} \neq 0 \quad \forall \mathbf{u}_i^* \in \left\{ \mathbf{u}_i : \frac{\partial \tilde{J}_i(\mathbf{u}_i)}{\partial \mathbf{u}_i} = 0 \right\} \text{ for } i = 1, \dots, n.$$



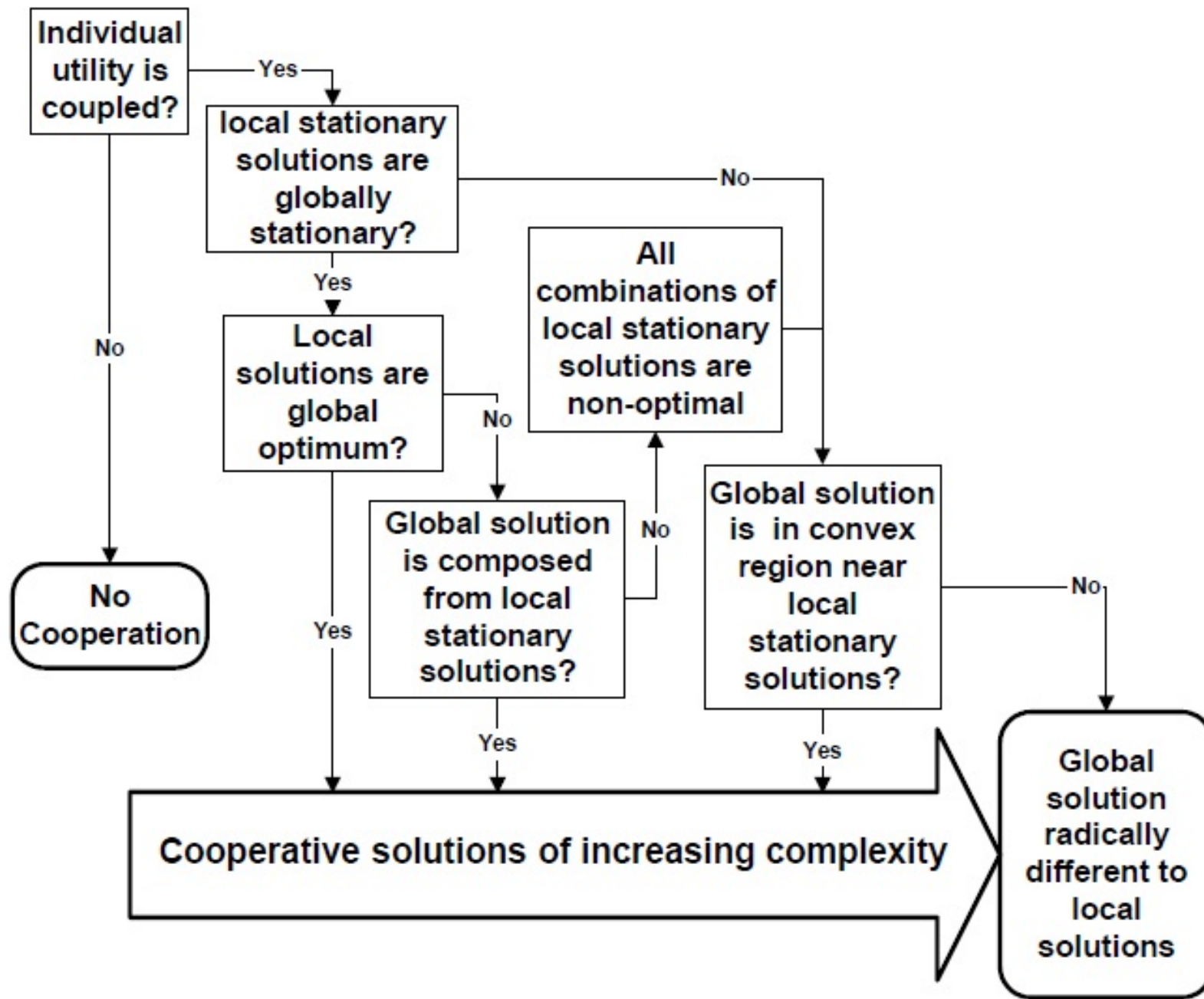


Figure 4.15: Levels of cooperation and solution complexity

# Experimental problem

- 2 sensor platforms
  - control actions  $u$ , sets bearing relative to expected location of feature
- range only sensors
  - sensors have noise with standard deviation  $\sigma$
- control objective: maximize expected entropic information about the target in next time step given prior inverse covariance matrix  $\mathbf{Y}$
- Example demonstrates different cooperation modes based on prior  $\mathbf{Y}$

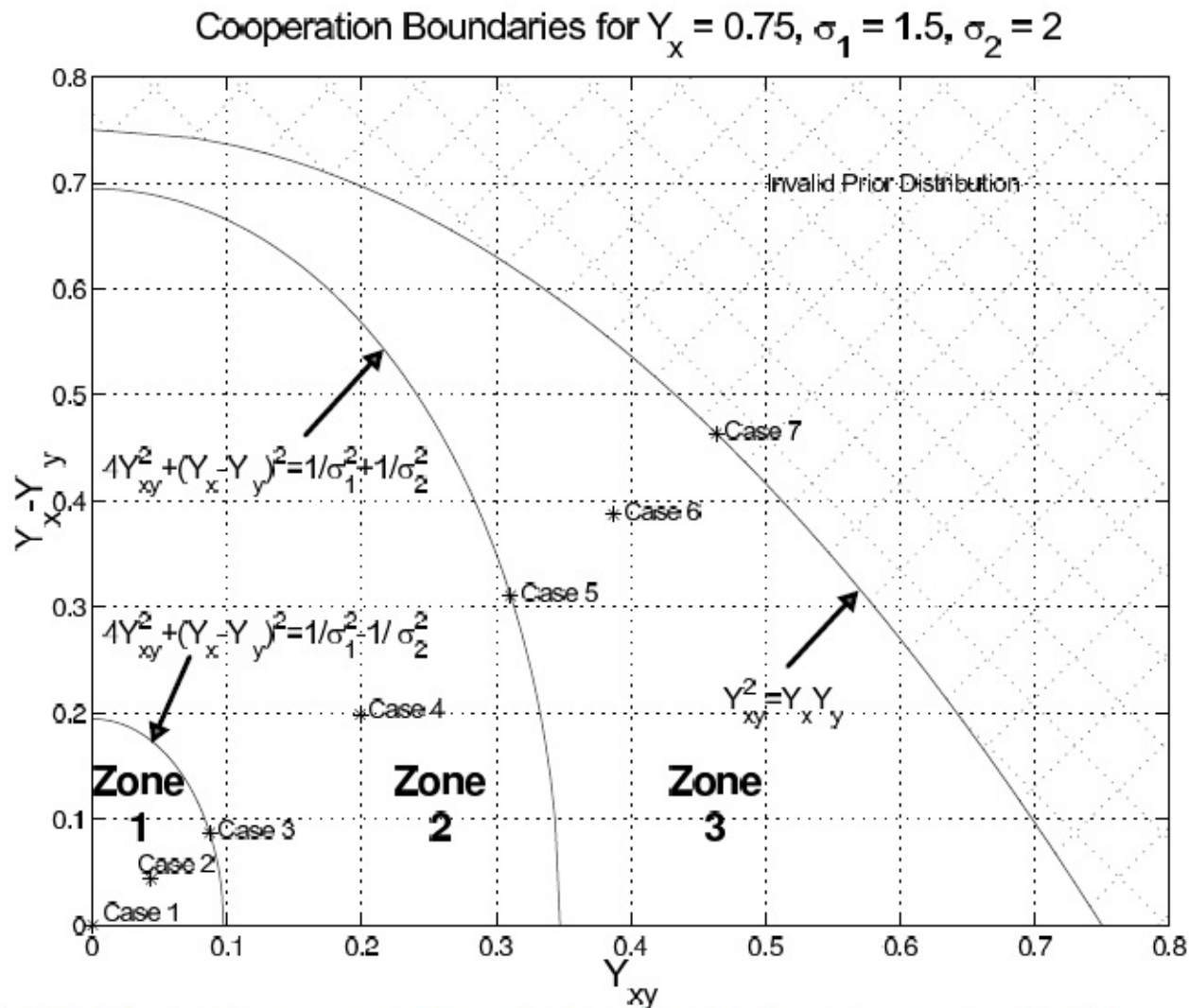


Figure 4.18: Boundaries for cooperative solution type in the two range-only feature localisation problem for varied prior information. The cases detailed in Figures 4.19 to 4.25 are indicated. Bifurcation in the structure of the optimal solution occurs at these boundaries. In ‘zone 1’ the optimum group solution is for the 1st sensor to maximise and the 2nd sensor to minimise their local partial utility measures. This changes in ‘zone 2’ and the maximising solutions move away from the partial utility stationary points. In ‘zone 3’ the group optimal actions are the maximum solutions to the partial utility measures.